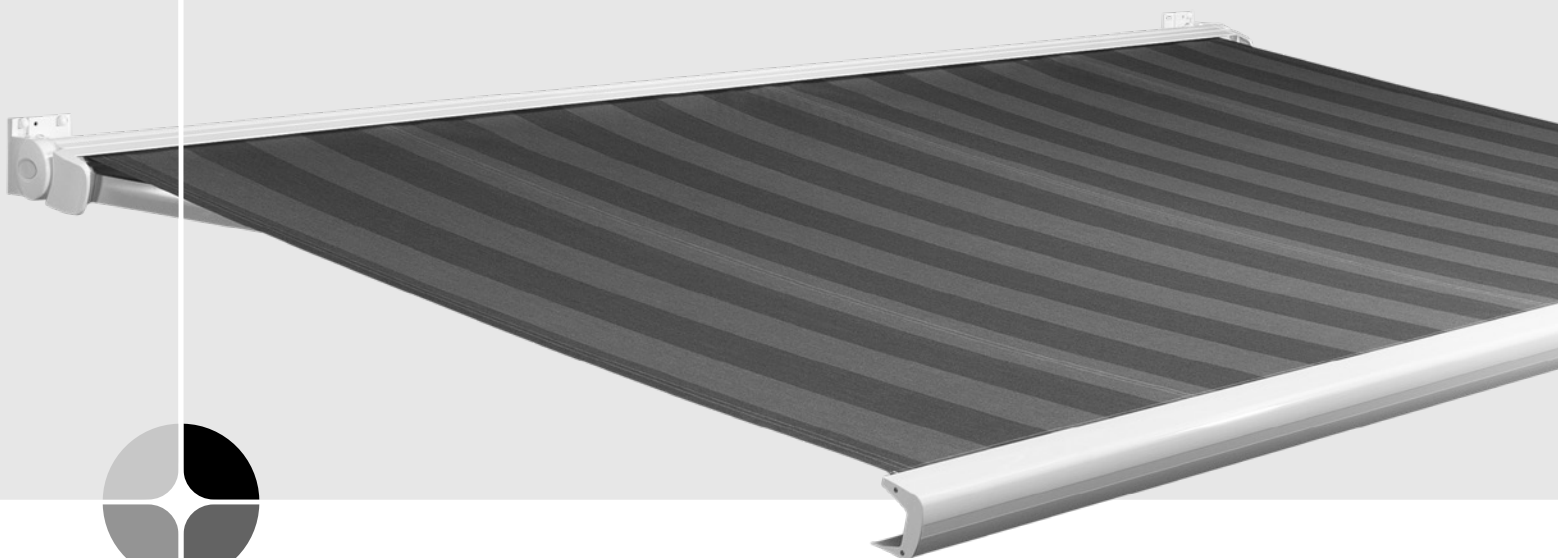
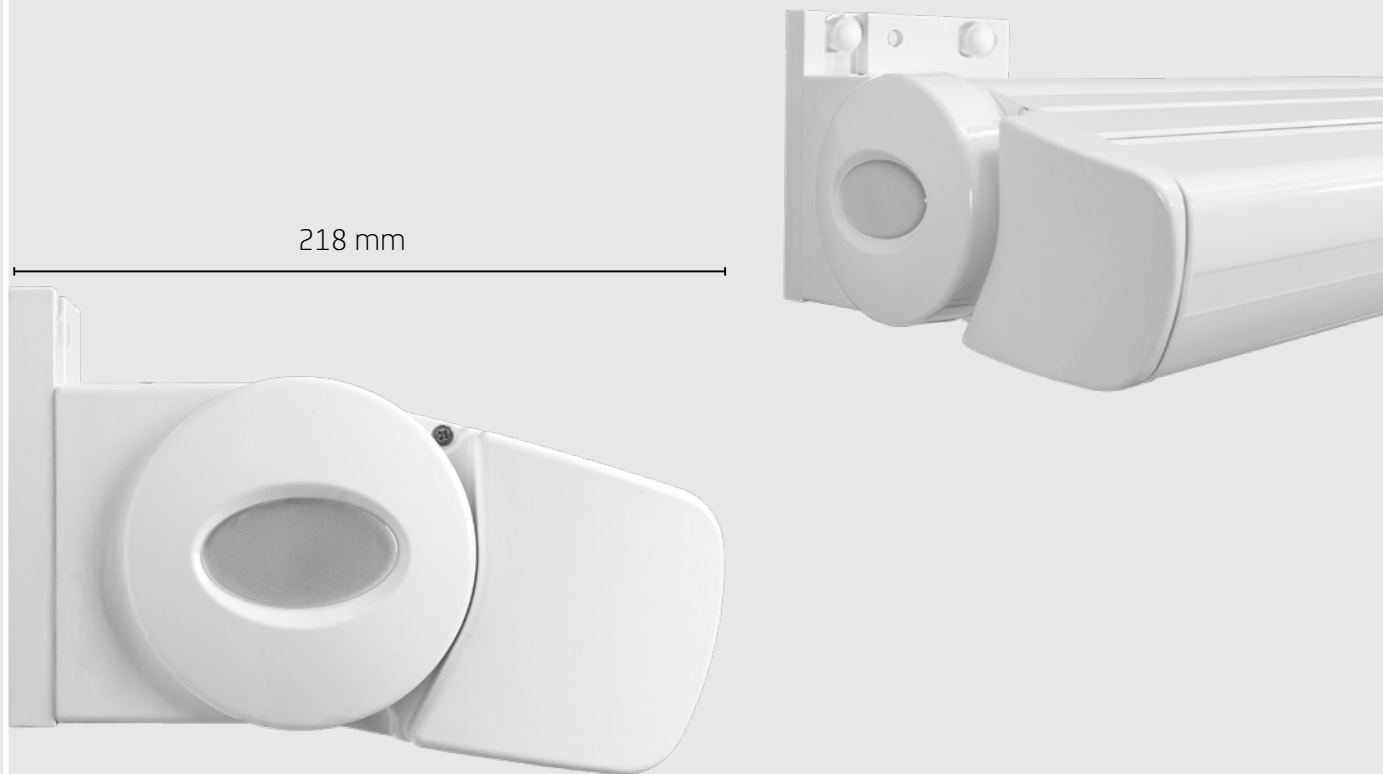


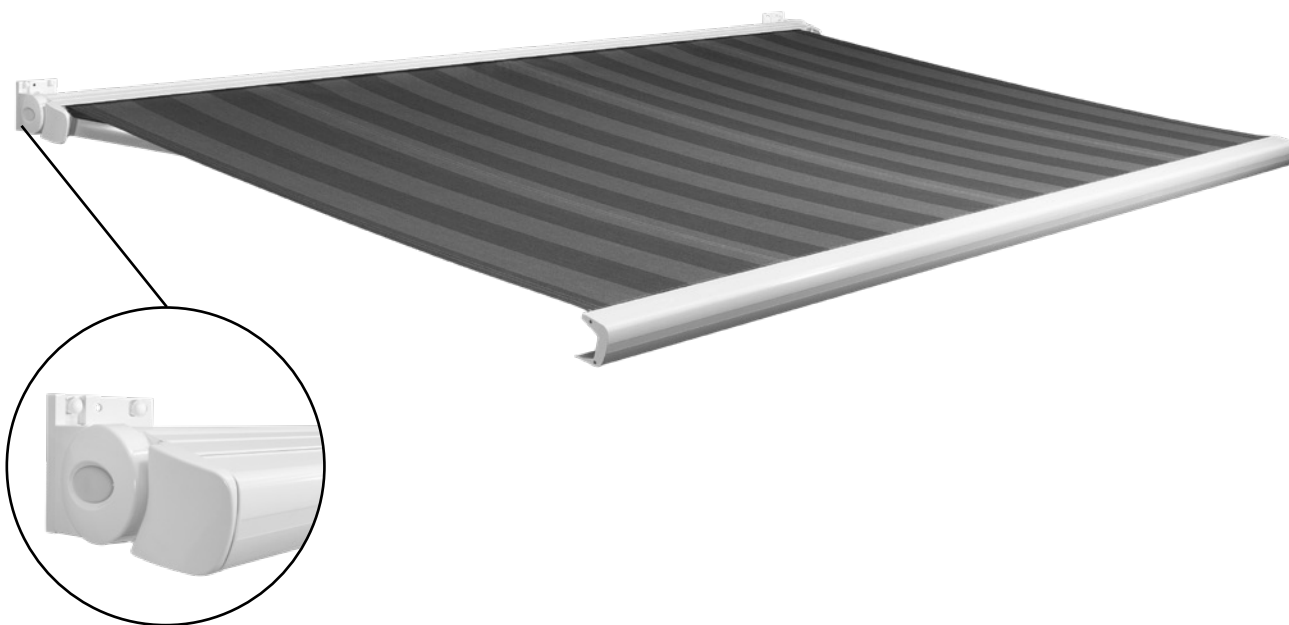
# Specifications

## Linea®

Folding arm cassette



## GENERAL



### Description

Folding arm cassettes or terrace awnings are ideal for the use above a terrace. The strong construction makes it possible to provide large terraces with shade, while the retractable arms ensure optimum space on the terrace.

### Installation

The arms are secured by two strong aluminium supports that are mounted on the wall or ceiling.

Due to the unique construction of the awning, it is possible to adjust it in different positions, so the terrace and/or window part can always be provided with shade.

### Application

Folding arm cassette or terrace awning Linea has special mounting brackets, suitable for wall and ceiling fitting. Think about fitting under balconies. The strong construction makes it possible to provide large terraces with shade, while the retractable arms ensure optimum space on the terrace.

## SPECIFICATION LINEA®

### Dimension

Linea has a max. fabric surface of 15 m<sup>2</sup> (width 6 m with 2,5 m projection) or width 16,5 m<sup>2</sup> (width 5,5 m with 3 m projection). The arms have a projection of 1,5 m, 2 m, 2,5 m or 3 m.

### Maximum dimensions

Projection	1500 mm	2000 mm	2500 mm	2500 mm	3000 mm	3000 mm
Maximum width	6000 mm	6000 mm	6000 mm	6000 mm	5500 mm	5500 mm
Minimum width	1910 mm	2480 mm	3050 mm	2820 mm	3620 mm	3320 mm

### Housing

The housing of the Linea is made of high quality aluminium profiles.

### Colour

Special treatment (anodizing) ensures the natural colour and shine of the aluminium cassette, despite weather and time influences. A silver coloured cassette or a powder coated cassette in white or cream are also an option.

### Roller tube

The roller Ø 78 mm with sleeve and thickness ± 1,0 mm is made of galvanized steel.

### Assembly

All fasteners are made of stainless steel class A2.

### Control

There are several control methods for the folding arm cassette Linea.

- Gear box or crank.
- Electric: Operated by a switch or remote control, possibly supplemented with a wind solar cell system for easy operation and energy savings.

The electric control can also be linked to operate several folding arm awning with one switch.

Generally the connection is done by a fitter/electro-technical engineer.

Power supply and wiring belong to the electro-technical installation (NEN 1010).



## FABRIC

Tibelly fabric is manufactured from solid dyed acrylic fibres. This means that the dye resins are added during the manufacture of the fibres. This gives the fibres an exceptional colour fastness. The woven fabric is given an extra water and dirt repellent treatment, matter the colour of the fabric, and keep out at least 90% of the UV radiation (99% of the UVB radiation), 70% of solar radiation and 72% of the visible radiation.

### Colour

The Tibelly collection consists of a wide colour range of unis, stripes and fantasy designs. Choice of 71 colours and patterns over 5 colour groups.

## GENERAL CHARACTERISTICS

### Composition

100% rot-free multicolored polyacrylate yarn acrylic.

### Finishing

Dirt and water repellent treatment especially for sun protection.

### Technical specifications Tibelly® acrylic fabric

Characteristics	Values Chain	Values impact	Units	Standards
Binding	Flat binding			ISO 4211-1
Weight	290 g/m <sup>2</sup>			ISO2286-1
Width	1200		mm	EN 1773
Thickness	0,64		mm	ISO 2286-3
Solidity	1250	880	mN	ISO 2493
Colour fastness (uv-radiation)	7-8		Class / 8	ISO 105 B02
Colour fastness (rain)	4-5		Class / 5	ISO 105 B04
Warranty	10		year	

## TÜV CERTIFICATION


We set great store by quality. All our sun protection products are compliant with the CE standards and, since the year 2000, have been subjected to extensive testing by the TÜV Nord Group. This is carried out in accordance with the DIN EN 13561:2009-01 standard. Our terrace awnings are tested on the basis of three criteria:

- Lifespan class
- Waterload class
- Wind resistance class

### Lifespan class according DIN EN 13561:2009-01

Lifespan expresses the number of extension and retraction movements that a terrace awning can withstand. The overview below indicates the various classes applicable in accordance with the EN 13561:2009-01 standard.


#### Linea 5000 mm x 3000 mm / 5500 x 3000 mm

Number of movements	Class 3	
Open and closed	10.000	


### Waterload class according DIN EN 1933:1999-03

Waterload expresses the number of water in liter/m<sup>2</sup> per hour that a terrace awning can withstand. This indicates, the quantity rainfall which a fully open sun protection system with a slope of 14° (Corresponds to a slope of 25%) must be able to drain. The following list shows which water load classes there are.

#### Linea 5000 mm x 3000 mm

Waterload class	Class 2	
Quantity rainfall	56 liter/m <sup>2</sup> per hour	


#### Linea 5500 mm x 3000 mm

Waterload class	Class 1	
Quantity rainfall	17 liter/m <sup>2</sup> per hour	

### Wind resistance class according DIN EN 1932:2013-09

Wind load is the maximum force of the wind which an opened terrace awning can withstand. The overview below indicates the various wind resistance classes.

#### Linea 5000 mm x 3000 mm / 5500 x 3000 mm

Wind resistance class	Class 2	
Beaufort scale	5	
V (km/h) (maximum)	38 km/h	
V (m/s) (maximum)	10,5 m/s	
Nominal test pressure p (N/m <sup>2</sup> )	70	
Safety test pressure 1,2 p (N/m <sup>2</sup> )	84	



**\*\* ATTENTION \*\***

The AVZ-Group accepts no liability for any errors in these specifications,  
or for any damage or losses resulting from the use thereof.