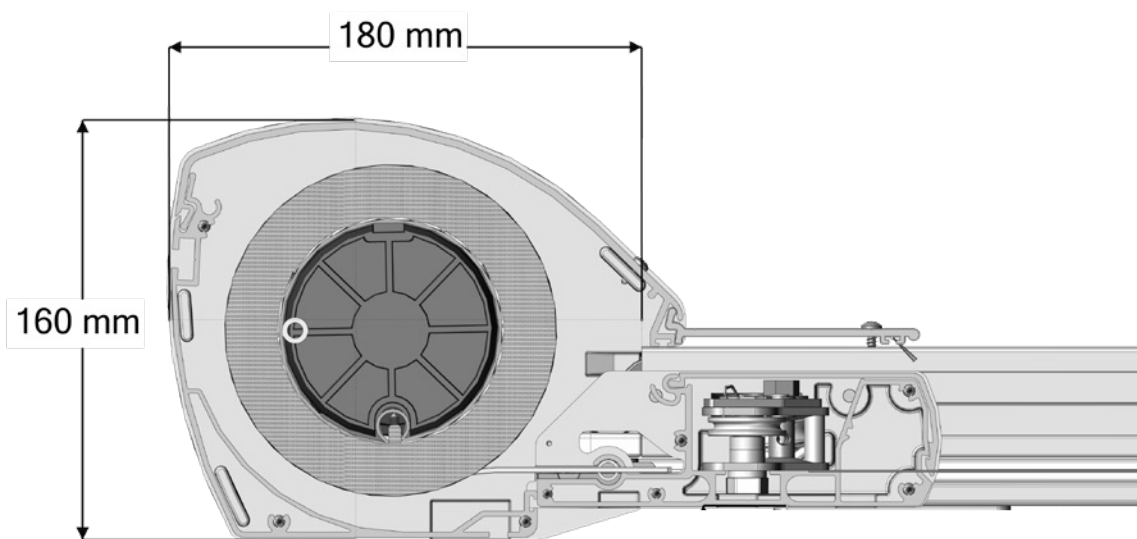
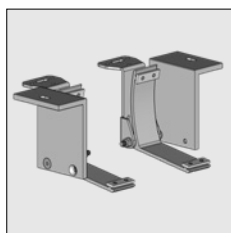


**The Cubola® is a patented product.
All necessary items for this product must be purchased from the AVZ-Group.
For any exceptions or further questions, please contact our sales department.**



The Cubola® is a patented product.
All necessary items for this product must be purchased from the AVZ-Group.
For any exceptions or further questions, please contact our sales department.

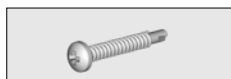
Part number	Description	Paint finish	Length in m ¹ Pack. Unit
-------------	-------------	--------------	--



4217 420-090	Mounting Bracket kit for free standing unit	Mill finish	
4217 420-006	Idem	RAL 9010 pure white	
4217 420-755	Idem (* = Textured)	RAL 7016 anthracite grey*	



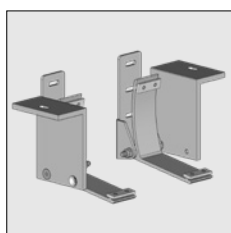
4217 422-090	Mounting Bracket for freestanding unit	Mill finish	
4217 422-006	Idem	RAL 9010 pure white	
4217 422-755	Idem (* = Textured)	RAL 7016 anthracite grey*	



4600 392-000	(AISI410) drill screw ZB.BK/KK 4.2 x 25 mm (For fixing the bracket to the support beam 110 mm).		100
--------------	--	--	-----

Mounting brackets L+R will be fixed with the Stud bolts M8 x 18 mm where the mounting parts are fixed awning side. Eventual the extra drill screw mentioned above can be applied.

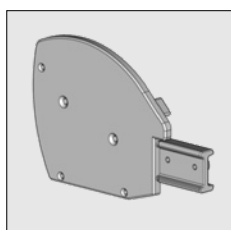
For wall mounting mount the awning in the Cubola construction with the mounting brackets below:



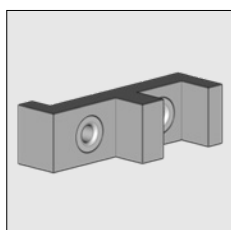
4217 424-090	Mounting Bracket kit for wall unit	Mill finish	
4217 424-006	Idem	RAL 9010 pure white	
4217 424-755	Idem (* = Textured)	RAL 7016 anthracite grey*	



4217 426-090	Mounting Bracket for wall unit	Mill finish	
4217 426-006	Idem	RAL 9010 pure white	
4217 426-755	Idem (* = Textured)	RAL 7016 anthracite grey*	



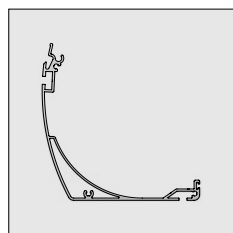
4217 355-090	Alu end fix bracket Solidare, left	Mill finish	
4217 357-090	Idem, right	Mill finish	
4217 355-006	Alu end fix bracket Solidare, left	RAL 9010 pure white	
4217 357-006	Idem, right	RAL 9010 pure white	
4217 355-755	Alu end fix bracket Solidare, left (* = Textured)	RAL 7016 anthracite grey*	
4217 357-755	Idem, right	RAL 7016 anthracite grey*	



4217 310-000	Drilling template piece for side guide (to fasten the top cover support to the side guide)		
--------------	---	--	--

= Article will be sold out. Special orders remain possible.

Cubola® Solidare®



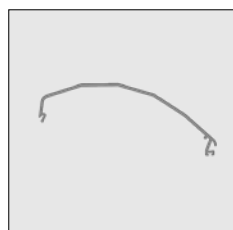
Part number	Description	Paint finish	Length in m ¹ Pack. Unit
6252 148-000	Alu bottom cover Piazzola/Solidare	Mill finish	4.0
6252 154-000	Idem	Mill finish	5.0
6252 150-000	Idem	Mill finish	6.0
6252 152-000	Idem	Mill finish	7.0
6252 148-006	Alu bottom cover Piazzola/Solidare	RAL 9010 pure white	4.0
6252 154-006	Idem	RAL 9010 pure white	5.0
6252 150-006	Idem	RAL 9010 pure white	6.0
6252 152-006 #	Idem	RAL 9010 pure white	7.0
6252 148-755	Alu bottom cover Piazzola/Solidare (* = Textured)	RAL 7016 anthracite grey*	4.0
6252 154-755	Idem	RAL 7016 anthracite grey*	5.0
6252 150-755	Idem	RAL 7016 anthracite grey*	6.0
6252 152-755	Idem	RAL 7016 anthracite grey*	7.0



4211 130-080	Nylon insert strip for stopper in bottom cover	Black	50
4211 132-080	Idem	White	50

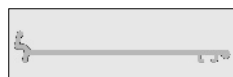


4210 142-000	Plate screw countersunk Philips head 4.2 x 32 mm (To fix bottom cover to the cover support)		100
--------------	--	--	-----



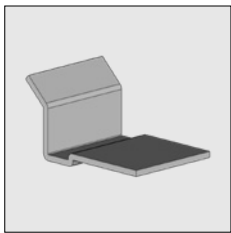




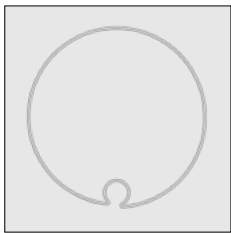
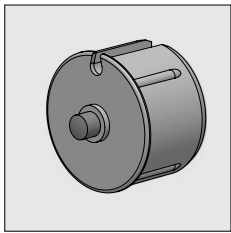

6252 300-000	Alu top cover Solidare	Mill finish	4.0
6252 304-000	Idem	Mill finish	5.0
6252 308-000	Idem	Mill finish	6.0
6252 300-006	Alu top cover Solidare	RAL 9010 pure white	4.0
6252 304-006	Idem	RAL 9010 pure white	5.0
6252 308-006	Idem	RAL 9010 pure white	6.0
6252 300-755	Alu top cover Solidare (* = Textured)	RAL 7016 anthracite grey*	4.0
6252 304-755	Idem	RAL 7016 anthracite grey*	5.0
6252 308-755	Idem	RAL 7016 anthracite grey*	6.0

The top cover can be extended with profile 6295 980/984/988. Always apply this cover extension for the Cubola.



6295 980-000	Alu cover extension	Mill finish	4.0
6295 984-000	Idem	Mill finish	5.0
6295 988-000	Idem	Mill finish	6.0
6295 980-006	Alu cover extension	RAL 9010 pure white	4.0
6295 984-006	Idem	RAL 9010 pure white	5.0
6295 988-006	Idem	RAL 9010 pure white	6.0
6295 980-755	Alu cover extension (* = Textured)	RAL 7016 anthracite grey*	4.0
6295 984-755	Idem (* = Textured)	RAL 7016 anthracite grey*	5.0
6295 988-755	Idem (* = Textured)	RAL 7016 anthracite grey*	6.0

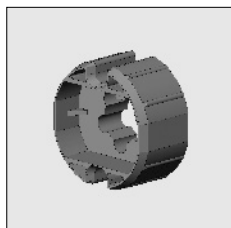
= Article will be sold out. Special orders remain possible.

	Part number	Description	Paint finish	Length in m ¹ Pack. Unit
	4217 345-000	Bracket to support cover extension. Apply upward of 4.5 m. width		
	4215 190-080	Bristle for top cover	Black	25
	4215 190-000	Idem	Black	500
	4217 190-000	(AISI410) drill screw ZB.BK/KK 4.2 x 13 mm. To fix the top cover to the cover support and bracket 4217 345-000 to the top cover		100
	4600 392-000	(AISI410) drill screw ZB.BK/KK 4.2 x 25 mm. To fix the cover extension to the guide.		100
	7700 952-006	Nylon sealing cap for drill screw 4.2	White	125
	7700 952-901	Idem	cream white	125
	7700 952-716	Idem	Anthracite grey	125
	7700 952-905	Idem	Black	125
	6253 382-000	Steel tube 85 x 1.25 mm with round groove (spec.)	Zinc-plated	4.0
	6253 384-000	Idem	Zinc-plated	4.5
	6253 386-000	Idem	Zinc-plated	5.0
	6253 390-000	Idem	Zinc-plated	6.0
	6253 392-000	Idem	Zinc-plated	6.5
	6253 394-000	Idem	Zinc-plated	7.0
	6253 396-000	Idem	Zinc-plated	7.5
	6253 382-008	Steel tube 85 x 1.25 mm with round groove (spec.)	RAL 7035 light grey	4.0
	6253 384-008	Idem	RAL 7035 light grey	4.5
	6253 386-008	Idem	RAL 7035 light grey	5.0
	6253 390-008	Idem	RAL 7035 light grey	6.0
	6253 392-008	Idem	RAL 7035 light grey	6.5
	6253 394-008	Idem	RAL 7035 light grey	7.0
	6253 396-008	Idem	RAL 7035 light grey	7.5
	4217 202-000	Nylon bearing roller bung 85 with axle 15 mm		
	4217 205-000	Nylon washer spindle hole 16 mm for bearing roller bung 4217 202-000		10

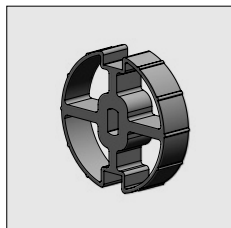
= Article will be sold out. Special orders remain possible.

Cubola® Solidare®

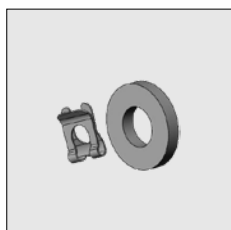
Part number	Description	Paint finish	Length in m ¹ Pack. Unit
-------------	-------------	--------------	--



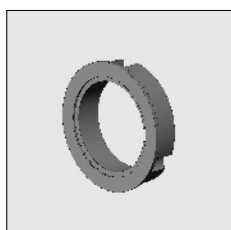
4000 951-000 Somfy friction ring for motor series 50/60 roller 85



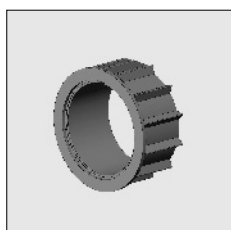
4001 133-068 ASA friction ring for motor series 45/50 roller 85



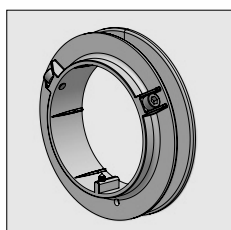
4001 106-068 ASA clamp spring kit
(to fix friction ring 4001 133-068)



4000 952-000 Somfy/ASA adaptor for motor series 60 roller 85



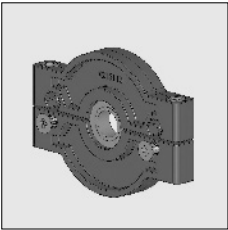
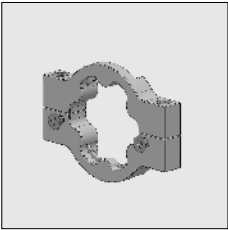
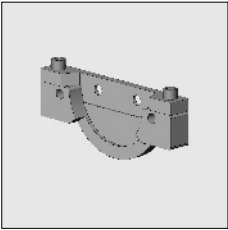
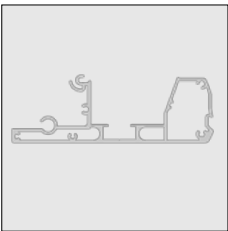
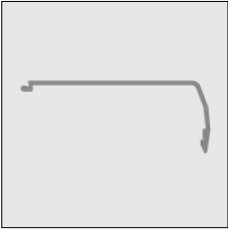
4000 953-000 Adaption ring Somfy/ASA motor series 50 roller 85
in combination with adapter 4000 952-000



4217 080-000 Nylon cord pulley roller 85

7

= Article will be sold out. Special orders remain possible.

Part number	Description	Paint finish	Length in m ¹ Pack. Unit
	4215 114-068 Nylon bearing block incl. precision bearing		
	4215 110-000 Alu motor bracket for Somfy (S)LT motors		
	4215 111-000 Alu motor bracket for ASA motors		
	6252 500-000 Alu front profile Solidare	Mill finish	4.0
	6252 504-000 Idem	Mill finish	5.0
	6295 508-000 Idem	Mill finish	6.0
	6252 500-006 Alu front profile Solidare	RAL 9010 pure white	4.0
	6252 504-006 Idem	RAL 9010 pure white	5.0
	6252 508-006 Idem	RAL 9010 pure white	6.0
	6252 500-755 Alu front profile Solidare (* = Textured)	RAL 7016 anthracite grey*	4.0
	6252 504-755 Idem (* = Textured)	RAL 7016 anthracite grey*	5.0
	6252 508-755 Idem (* = Textured)	RAL 7016 anthracite grey*	6.0
	6252 360-000 Alu cover profile-front profile Solidare	Mill finish	4.0
	6252 364-000 Idem	Mill finish	5.0
	6252 368-000 Idem	Mill finish	6.0
	6252 360-006 Alu cover profile-front profile Solidare	RAL 9010 pure white	4.0
	6252 364-006 Idem	RAL 9010 pure white	5.0
	6252 368-006 Idem	RAL 9010 pure white	6.0
	6252 360-755 Alu cover profile-front profile Solidare (* = Textured)	RAL 7016 anthracite grey*	4.0
	6252 364-755 Idem (* = Textured)	RAL 7016 anthracite grey*	5.0
	6252 368-755 Idem (* = Textured)	RAL 7016 anthracite grey*	6.0

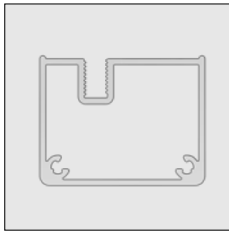
= Article will be sold out. Special orders remain possible.

Cubola® Solidare®

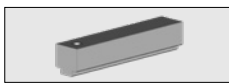
Part number	Description	Paint finish	Length in m ¹ Pack. Unit
-------------	-------------	--------------	--

Tension wire system for front profile.

To prevent that the front profile will sag on larger widths, the tension wire system below can be applied and mounted below the front profile. To be used in combination all systems with front profiles.



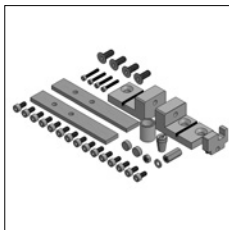
6295 688-000	Alu cover profile for tension wire system	Mill finish	5.0
6295 690-000	Idem	Mill finish	6.0
6295 688-006	Alu cover profile for tension wire system	RAL 9010 pure white	5.0
6295 690-006	Idem	RAL 9010 pure white	6.0
6295 688-755	Alu cover profile for tension wire system (* = Textured)	RAL 7016 anthracite grey*	5.0
6295 690-755	Idem (* = Textured)	RAL 7016 anthracite grey*	6.0



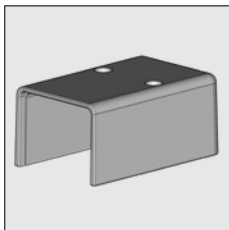
4215 272-000	Drilling template for tension wire system		
--------------	---	--	--



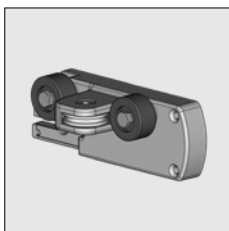
6295 695-000	Stainless steel tension wire 304		6.5
--------------	----------------------------------	--	-----



4215 256-068	Parts kit with fixing materials for tension wire system		
--------------	---	--	--



4215 266-000	Alu end cap for tension blocks	Mill finish	
4215 266-006	Idem	RAL 9010 pure white	
4215 266-755	Idem (* = Textured)	RAL 7016 anthracite grey*	



4217 326-090	Alu guide pulley Solidare, left	Mill finish	
4217 328-090	Idem, right	Mill finish	
4217 326-006	Alu guide pulley Solidare, left	RAL 9010 pure white	
4217 328-006	Idem, right	RAL 9010 pure white	
4217 326-755	Alu guide pulley Solidare, left (* = Textured)	RAL 7016 anthracite grey*	
4217 328-755	Idem, right (* = Textured)	RAL 7016 anthracite grey*	



4210 152-000	Stainless steel plate screw countersunk Philips head 4.2 x 45 mm (to fix the guide pulley to the front profile)		100
--------------	---	--	-----

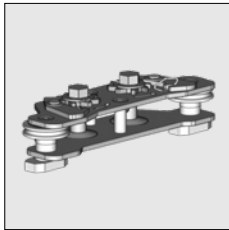
= Article will be sold out. Special orders remain possible.

Part number	Description	Paint finish	Length in m ¹ Pack. Unit
4452 470-905	Nylon end cap guide block upper side	Black	10
4452 077-000	Stainless steel plate screw countersunk Philips head 3.5 x 32 mm (to fix the end cap upper side to the guide block/front profile)		100
4217 399-905	Nylon end cap guide pulley upper part	Black	10
4452 083-000	Plate screw countersunk Philips head 3,5 x 16 mm (To fix the end cap upper part to the lower part)		100
4215 183-000	Stainless steel spring 25 mm, length 350 mm (for projection up to 350 cm)		
4215 185-000	Stainless steel spring 25 mm, length 570 mm (for projection from 350 cm)		
<p>Note: The springs are to be stretched up to a max. of 60% of the total spring length.</p> <p>ATTENTION !! The pretention must be approximately 30% of the total lengths of the springs. The springs can be pretensioned when the front profile is close to the top cover.</p>			
4217 460-068	Nylon support block for spring packet per 4 pieces (2 per spring)		
4215 155-000	Cord 2,5 mm	White	100
4215 158-000	Stainless steel pulley for cord 2.5 mm with nylon runner		10

= Article will be sold out. Special orders remain possible.

Cubola® Solidare®

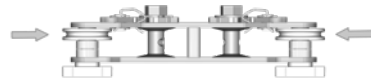
Part number	Description	Paint finish	Length in m ¹ Pack. Unit
-------------	-------------	--------------	--



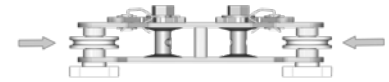
4215 022-068 Cord tensioner Solidare

ATTENTION !!

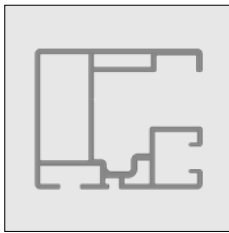
For this cord tensioner the runners are positioned higher than the similar cord tensioner of the Summerlight.



4215 022-068 cord tensioner Solidare



4215 020-068 cord tensioner Summerlight



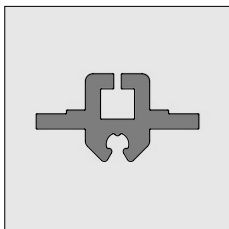
6252 384-000	Alu side guide Solidare	Mill finish	5.0
6252 388-000	Idem	Mill finish	6.0
6252 394-000	Idem	Mill finish	7.5
6252 384-006	Alu side guide Solidare	RAL 9010 pure white	5.0
6252 388-006	Idem	RAL 9010 pure white	6.0
6252 394-006	Idem	RAL 9010 pure white	7.5
6252 384-755	Alu side guide Solidare (* = Textured)	RAL 7016 anthracite grey*	5.0
6252 388-755	Idem	RAL 7016 anthracite grey*	6.0
6252 394-755	Idem	RAL 7016 anthracite grey*	7.5



4090 054-000 Stainless steel countersunk cross screw M 6 x 14 mm
(to fix the cover support and bearing block set to the side guide support) 100



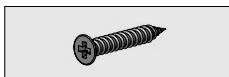
4410 402-000 Stainless steel Washer M6 100



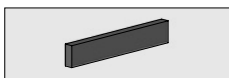
4452 481-008	Nylon guide for side guide	Grey	6.0
4452 485-008	Idem	Grey	7.0
4452 484-008	Idem	Grey	7.5



4452 486-008 Nylon funnel for nylon guide Grey 50



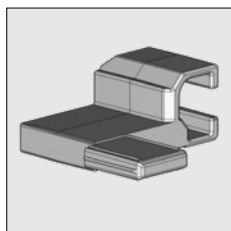
4452 070-000 Plate screw countersunk Philips head 2.9 x 19 mm
(to fix the funnel on nylon guide) 100



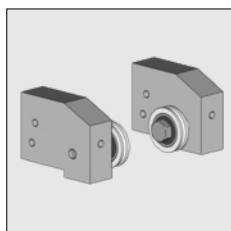
4452 487-000 Neoprene strip 10 x 4 x 60 mm self-adhesive Use a strip every
± 50 cm on the nylon guide. 135

= Article will be sold out. Special orders remain possible.

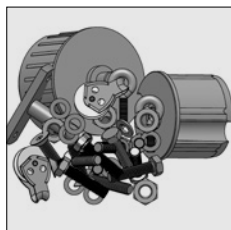
Part number	Description	Paint finish	Length in m ¹ Pack. Unit
4217 390-000	Alu guide plate for side guide Solidare, left	Mill finish	
4217 392-000	Idem, right	Mill finish	
4217 390-006	Alu guide plate for side guide Solidare, left	RAL 9010 pure white	
4217 392-006	Idem, right	RAL 9010 pure white	
4217 390-755	Alu guide plate for side guide Solidare, left (* = Textured)	RAL 7016 anthracite grey*	
4217 392-755	Idem, right (* = Textured)	RAL 7016 anthracite grey*	



4217 386-001	Alu bearing block Solidare	Silver anodized	
--------------	----------------------------	-----------------	--



4217 342-068	Cubola Solidare kit with fixing materials, bearing pin, bearing roller bungs 63 and 85, nylon end caps, 2x pulleys and Guide pulley (bottom and upper side). For 1 freestanding awning Cubola Solidare	Silver anodized	
--------------	---	-----------------	--



= Article will be sold out. Special orders remain possible.

Notes

= Article will be sold out. Special orders remain possible.