

Multipurpose parts Summerlight® and Summerlight® Verso

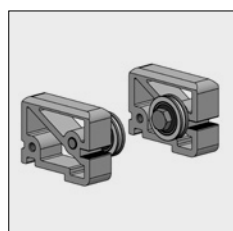
Part number	Description	Paint finish	Length in m ¹ Pack. Unit
-------------	-------------	--------------	--

THE FOLLOWING PARTS ARE UNIVERSAL FOR SUMMERLIGHT AND SUMMERLIGHT VERSO

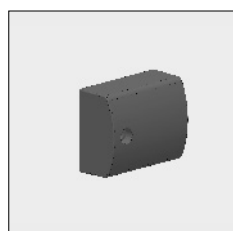
The parts below are also available in the end fix bracket kit of the Summerlight and the Summerlight Verso. However these are required in case of a coupled version.



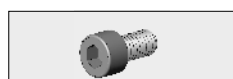
4215 123-000	Nylon cord pulley, 4 socket-head bolts included		
--------------	---	--	--



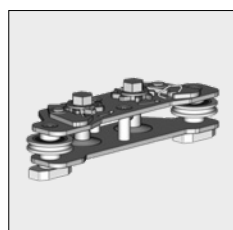
4217 260-001	Alu end bearing kit	Anodised	
--------------	---------------------	----------	--



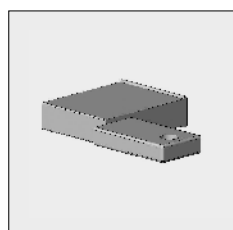
4215 145-006	Nylon end cover for end bearing 4217 260-001	RAL 9010 pure white	
4215 145-007	Idem	RAL 8019 grey brown	
4215 145-901	Idem	RAL 9001 cream	
4215 145-905	Idem	Black	



4210 963-000	Stainless steel socket-head bolt M6 x 12 mm with cylinder head (For fixing the end cover to the end bearing)		100
--------------	--	--	-----



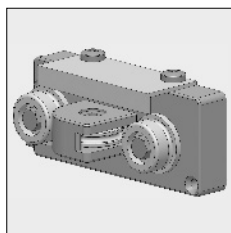
4215 020-068	Cord tensioner Summerlight		
--------------	----------------------------	--	--



4215 124-000	Alu guide plate	Mill finish	
4215 124-006	Idem	RAL 9010 pure white	
4215 124-007	Idem	RAL 8019 grey brown	
4215 124-901	Idem	RAL 9001 cream	
4215 124-916	Idem	RAL 9016 traffic white	
4215 124-755	Idem (* = Textured)	RAL 7016 anthracite grey*	

= Article will be sold out. Special orders remain possible.

Multipurpose parts Summerlight® und Summerlight® Verso

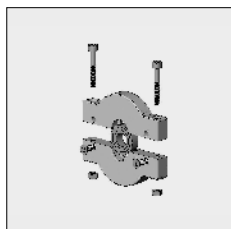


Part number	Description	Paint finish	Length in m ¹ Pack. Unit
4215 310-090	Alu guide pulley, left	Mill finish	
4215 312-090	Idem, right	Mill finish	
4215 310-006	Alu guide pulley, left	RAL 9010 pure white	
4215 312-006	Idem, right	RAL 9010 pure white	
4215 310-007	Alu guide pulley, left	RAL 8019 grey brown	
4215 312-007	Idem, right	RAL 8019 grey brown	
4215 310-901	Alu guide pulley, left	RAL 9001 cream	
4215 312-901	Idem, right	RAL 9001 cream	
4215 310-916	Alu guide pulley, left	RAL 9016 traffic white	
4215 312-916	Idem, right	RAL 9016 traffic white	
4215 310-755	Alu guide pulley, left*	RAL 7016 anthracite grey*	
4215 312-755	Idem, right (* = Textured)	RAL 7016 anthracite grey*	

Note: The guide pulley is standard equipped with runners.
These runners are also separately available:



4215 168-000 Nylon runner for guide pulley

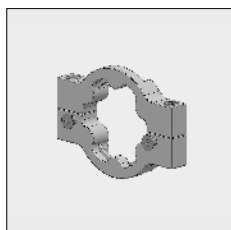


4215 114-068 Nylon bearing block incl. precision bearing

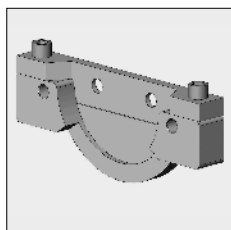


4215 173-000 Runner with spindle for end fix bracket

NOT INCLUDED IN THE END FIX BRACKET SPARE PARTS KIT ARE:



4215 110-000 Alu motor bracket for Somfy (S)LT motor



4215 111-000 Alu motor bracket for ASA motor

= Article will be sold out. Special orders remain possible.

Multipurpose parts Summerlight® and Summerlight® Verso

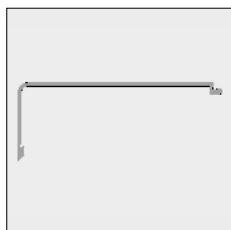
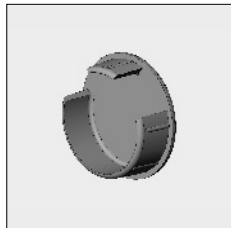
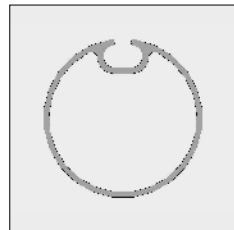
Part number	Description	Paint finish	Length in m ¹ Pack. Unit
4470 082-000	Nylon bearing roller bung 78 with spindle 12 mm (length spindle 12 mm), flange 5 mm	Grey	10
4460 020-080	Nylon adapter bush 15 to 12 mm (for precision bearing)		100
4210 497-000	Nylon washer 20 x 12 x 2 mm		50
6295 553-000	Alu side guide 60 x 75 mm	Mill finish	6.0
6295 554-000	Idem	Mill finish	7.5
6295 553-006	Alu side guide 60 x 75 mm	RAL 9010 pure white	6.0
6295 554-006	Idem	RAL 9010 pure white	7.5
6295 553-007	Alu side guide 60 x 75 mm	RAL 8019 grey brown	6.0
6295 554-007	Idem	RAL 8019 grey brown	7.5
6295 553-901	Alu side guide 60 x 75 mm	RAL 9001 cream	6.0
6295 554-901	Idem	RAL 9001 cream	7.5
6295 553-916	Alu side guide 60 x 75 mm	RAL 9016 traffic white	6.0
6295 554-916	Idem	RAL 9016 traffic white	7.5
6295 553-755	Alu side guide 60 x 75 mm *	RAL 7016 anthracite grey*	6.0
6295 554-755	Idem (* = Textured)	RAL 7016 anthracite grey*	7.5
1203 941-000	Alu corner profile 100 x 50 x 3 mm (fixing for recess fitting)	Mill finish	5.0
1203 941-006	Idem	RAL 9010 pure white	5.0
1203 941-901	Idem	RAL 9001 cream	5.0
4215 235-000	Alu support for roller 50 mm	Mill finish	
4215 235-006	Idem	RAL 9010 pure white	
4215 235-007	Idem	RAL 8019 grey brown	
4215 235-901	Idem	RAL 9001 cream	
4215 235-916	Idem	RAL 9016 traffic white	

**For large projections, an extra fabric support can be mounted.
Mounting is done with support 4215 235-... fitted below the side guide.
Attention: the side guide brackets need to have enough height for the support and tube.**

= Article will be sold out. Special orders remain possible.

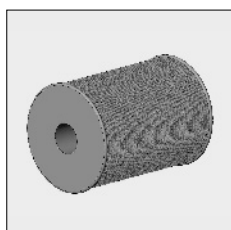
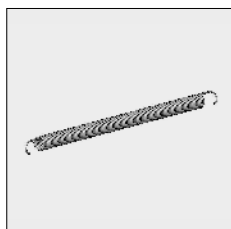
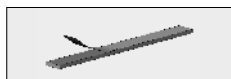
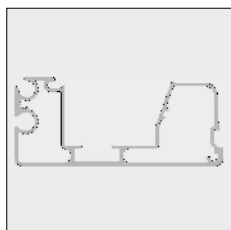
Multipurpose parts Summerlight® und Summerlight® Verso

Part number	Description	Paint finish	Length in m ¹ Pack. Unit
6296 251-000	Alu roller 50 mm	Mill finish	7.0
6296 252-000	Idem	Mill finish	7.5
6296 251-006	Idem	RAL 9010 pure white	7.0
6296 251-007 #	Idem	RAL 8019 grey brown	7.0
6296 251-901	Idem	RAL 9001 cream	7.0
6296 251-916 #	Idem	RAL 9016 traffic white	7.0
4000 069-000	Nylon sealing cap for roller 50 mm	Grey	
6295 562-000	Alu front profile (upper part)	Mill finish	4.0
6295 565-000	Idem	Mill finish	5.0
6295 566-000	Idem	Mill finish	6.0
6295 568-000	Idem	Mill finish	7.0
6295 562-006	Alu front profile (upper part)	RAL 9010 pure white	4.0
6295 565-006	Idem	RAL 9010 pure white	5.0
6295 566-006	Idem	RAL 9010 pure white	6.0
6295 568-006	Idem	RAL 9010 pure white	7.0
6295 562-007	Alu front profile (upper part)	RAL 8019 grey brown	4.0
6295 565-007 #	Idem	RAL 8019 grey brown	5.0
6295 566-007	Idem	RAL 8019 grey brown	6.0
6295 562-901	Alu front profile (upper part)	RAL 9001 cream	4.0
6295 565-901	Idem	RAL 9001 cream	5.0
6295 566-901	Idem	RAL 9001 cream	6.0
6295 568-901	Idem	RAL 9001 cream	7.0
6295 565-916	Alu front profile (upper part)	RAL 9016 traffic white	5.0
6295 566-916	Idem	RAL 9016 traffic white	6.0
6295 568-916 #	Idem	RAL 9016 traffic white	7.0
6295 562-755	Alu front profile (upper part) *	RAL 7016 anthracite grey*	4.0
6295 565-755	Idem (* = Textured)	RAL 7016 anthracite grey*	5.0
6295 566-755	Idem (* = Textured)	RAL 7016 anthracite grey*	6.0



Multipurpose parts Summerlight® and Summerlight® Verso

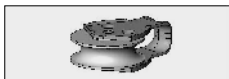
Part number	Description	Paint finish	Length in m ¹ Pack. Unit
6295 572-000	Alu front profile (lower part)	Mill finish	4.0
6295 575-000	Idem	Mill finish	5.0
6295 576-000	Idem	Mill finish	6.0
6295 578-000	Idem	Mill finish	7.0
6295 572-006	Alu front profile (lower part)	RAL 9010 pure white	4.0
6295 575-006	Idem	RAL 9010 pure white	5.0
6295 576-006	Idem	RAL 9010 pure white	6.0
6295 578-006	Idem	RAL 9010 pure white	7.0
6295 572-007	Alu front profile (lower part)	RAL 8019 grey brown	4.0
6295 575-007 #	Idem	RAL 8019 grey brown	5.0
6295 576-007	Idem	RAL 8019 grey brown	6.0
6295 572-901	Alu front profile (lower part)	RAL 9001 cream	4.0
6295 575-901	Idem	RAL 9001 cream	5.0
6295 576-901	Idem	RAL 9001 cream	6.0
6295 578-901	Idem	RAL 9001 cream	7.0
6295 572-755	Alu front profile (lower part) *	RAL 7016 anthracite grey*	4.0
6295 575-755	Idem (* = Textured)	RAL 7016 anthracite grey*	5.0
6295 576-755	Idem (* = Textured)	RAL 7016 anthracite grey*	6.0
4452 238-000	Neoprene strip 10 x 2 mm, self-adhesive, for suppression of impact sound and for a correct fitting of the upper and lower front profile		50
4210 142-000	Stainless steel plate screw with Philips head 4.2 x 32 mm (For fixing the guide block to the front profile)		100
4215 172-068	Screw eye with nut M6, For fixing the spring to the guide block		10
4215 183-000	Stainless steel spring 25 mm, length 350 mm (For a projection up to 350 cm)		
4215 185-000	Idem, length 570 mm (For a projection from 350 cm)		
Note: the springs are to be stretched up to a max. of 60% of the total spring length.			
ATTENTION !! The pretention must be approximately 30% of the total lengths of the springs. The springs can be pretensioned when the front profile is close to the top cover.			
4215 155-000	Cord 2.5 mm	White	100



= Article will be sold out. Special orders remain possible.

Multipurpose parts Summerlight® und Summerlight® Verso

Part number	Description	Paint finish	Length in m ¹	Pack. Unit
-------------	-------------	--------------	--------------------------	------------



4215 158-000	Stainless steel pulley for cord 2.5 mm with nylon runner			10
--------------	--	--	--	----

The Summerlight and Summerlight Verso can also be equipped with some parts of the Piazzola (refer to 7K) which makes a maximum width of 6 m. and 4 m. projection possible in combination with a centre fabric support.

- Tube 85, bearing roller bung, adaption kit and cord pulley
- Front profile with tensioning rod
- Centre support beam (6252 180/182/184 + support 4217 152-.. (Use higher distance brackets).