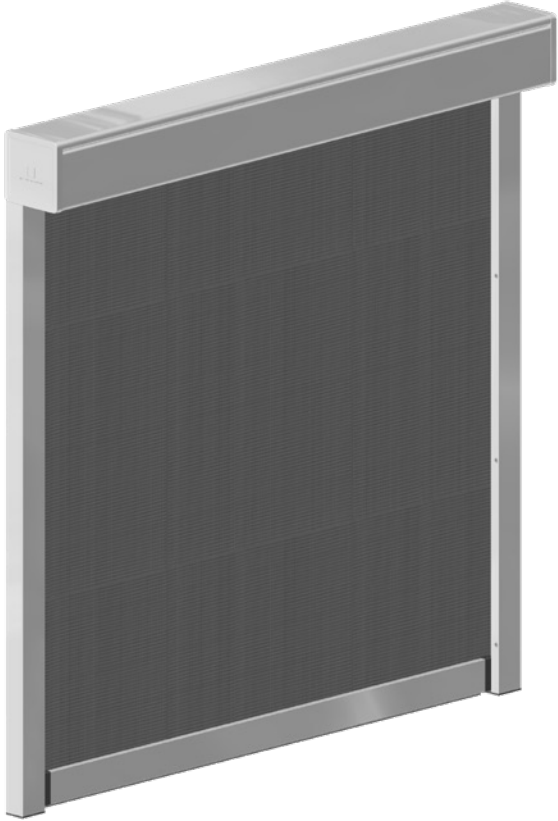
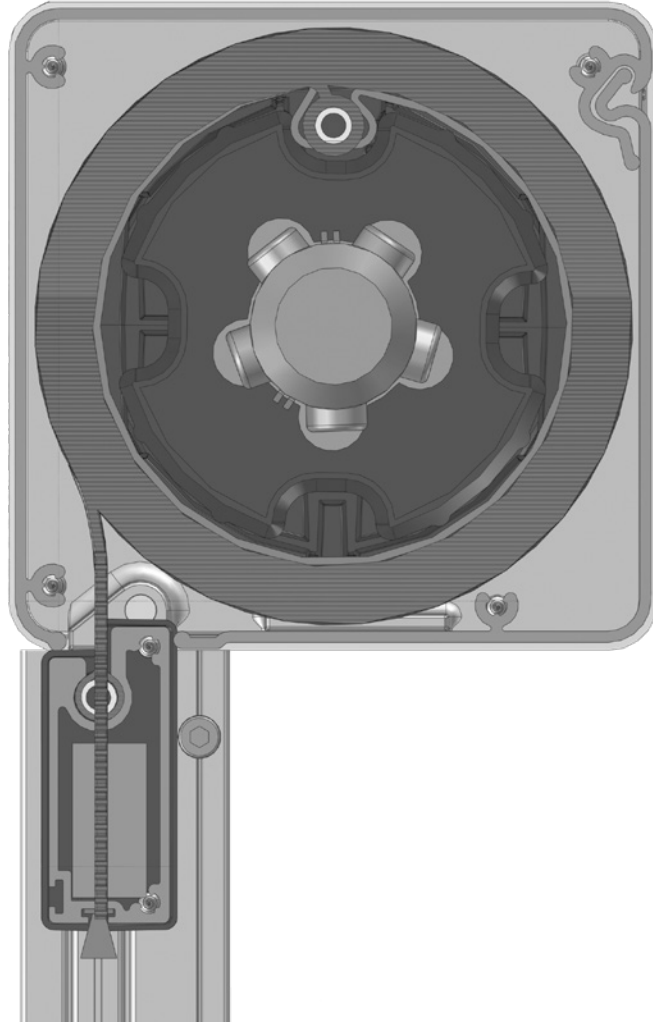




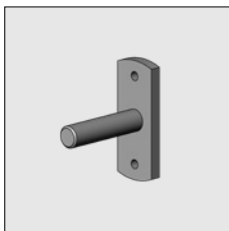
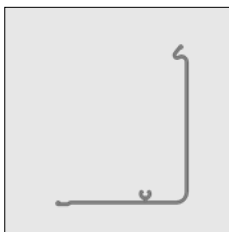
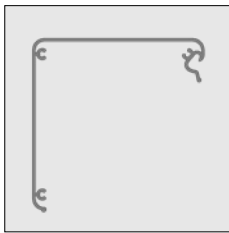
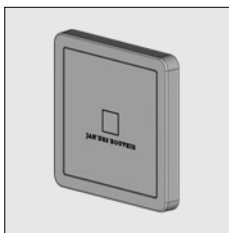
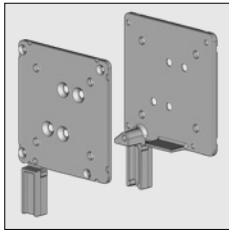
6





# SolidScreen® Jan des Bouvrie

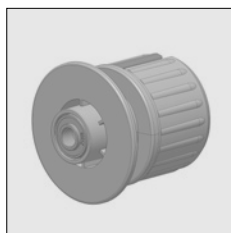
Part number	Description	Paint finish	Length in m <sup>1</sup> Pack. Unit
4452 434-000	Alu end fix bracket SolidScreen Jan des Bouvrie, left	Mill finish	
4452 436-000	Idem, right	Mill finish	
4452 434-006	Alu end fix bracket SolidScreen Jan des Bouvrie, left	RAL 9010 pure white	
4452 436-006	Idem, right	RAL 9010 pure white	
4452 434-755	Alu end fix bracket SolidScreen Jan des Bouvrie, left	RAL 7016 anthracite grey*	
4452 436-755	Idem, right (* = textured)	RAL 7016 anthracite grey*	
4452 434-905	Alu end fix bracket SolidScreen Jan des Bouvrie, left	RAL 9005 jet black*	
4452 436-905	Idem, right (* = textured)	RAL 9005 jet black*	
4452 438-006	Nylon end fix cover SolidScreen Jan des Bouvrie	White	10
4452 438-755	Idem	Grey	10
4452 438-900	Idem	Black	10
6296 616-000	Alu top cover SolidScreen Jan des Bouvrie 105	Mill finish	7.5
6296 616-006	Idem	RAL 9010 pure white	7.5
6296 616-755	Idem (* = textured)	RAL 7016 anthracite grey*	7.5
6296 616-900	Idem (* = textured)	RAL 9005 jet black*	7.5
6296 626-000	Alu bottom cover SolidScreen Jan des Bouvrie 105	Mill finish	7.5
6296 626-006	Idem	RAL 9010 pure white	7.5
6296 626-755	Idem (* = textured)	RAL 7016 anthracite grey*	7.5
6296 626-900	Idem (* = textured)	RAL 9005 jet black*	7.5
4452 083-000	Plate screw countersunk Philips head 3,5 x 16 mm (For fixing of the top and bottom cover to the end fix bracket)		100
4210 498-080	Bearing pin 12 mm with wall bracket	Zinc plated	10
4210 484-000	Stianless steel screw M6 x 10 mm countersunk Philips head (For fixing the bearing pin to the end fix bracket)		100



# = Article will be sold out. Special orders remain possible.

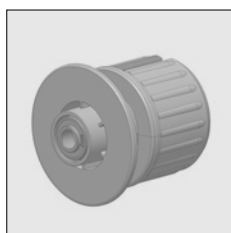
# SolidScreen® Jan des Bouvrie

Part number	Description	Paint finish	Length in m <sup>1</sup> Pack. Unit
-------------	-------------	--------------	--



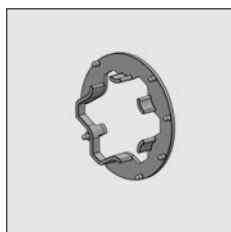
4452 445-068 Nylon bearing roller bung for tube 78.  
Incl. 2 precision bearings with increased inner ring.

Grey



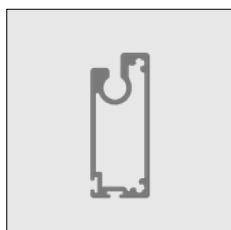
4452 464-008 Nylon motor roller bung for tube 78.  
In combination with:  
ASA motor series 50 or Somfy motor series 50

Grey



4452 441-905 Motor cable guide Somfy

Black



6297 734-000 Alu bottom slat square SolidScreen

Mill finish

7.0

6297 734-006 Idem

RAL 9010 pure white

7.0

6297 734-755 Idem (\* = textured)

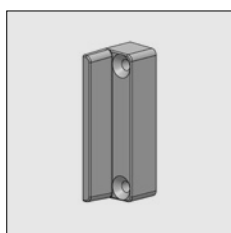
RAL 7016 anthracite grey\*

7.0

6297 734-900 Idem (\* = textured)

RAL 9005 jet black\*

7.0



4452 470-006 Nylon end cap bottom slat square front

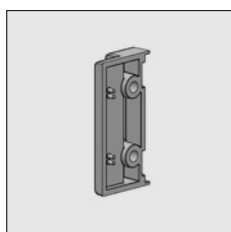
White

10

4452 470-905 Idem

Black

10



4452 475-006 Nylon universal end cap bottom slat rear

White

10

4452 475-905 Idem

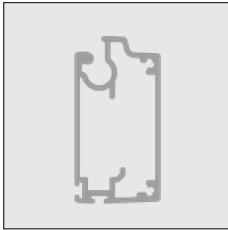
Black

10

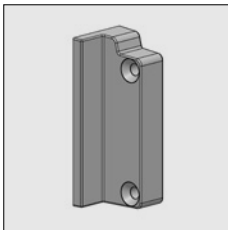
# = Article will be sold out. Special orders remain possible.

Part number	Description	Paint finish	Length in m <sup>1</sup> Pack. Unit
-------------	-------------	--------------	--

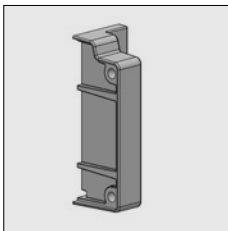
The bottom slat heavy version below is meant for an extra weight (double reinforcement) for very high/small screens. For application guidelines reinforcement refer to Assembly and montage handleiding.



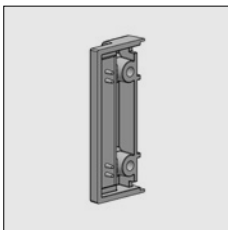
6297 754-000	Alu bottom slat square heavy SolidScreen	Mill finish	5.0
6297 754-006	Idem	RAL 9010 pure white	5.0
6297 754-755	Idem (* = textured)	RAL 7016 anthracite grey*	5.0
6297 754-900	Idem (* = textured)	RAL 9005 jet black*	5.0
6297 755-000	Alu bottom slat square heavy SolidScreen	Mill finish	6.0
6297 755-006	Idem	RAL 9010 pure white	6.0
6297 755-755	Idem (* = textured)	RAL 7016 anthracite grey*	6.0
6297 756-000	Alu bottom slat square heavy SolidScreen	Mill finish	7.5



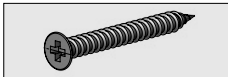
4452 474-006	Nylon end cap bottom slat square heavy front, left	White	
4452 474-905	Idem	Black	



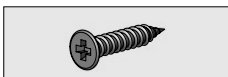
4452 476-006	Nylon end cap bottom slat square heavy front, right	White	
4452 476-905	Idem	Black	



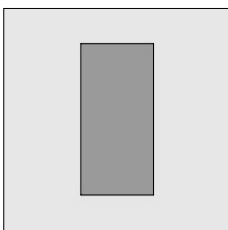
4452 477-006	Nylon end cap bottom slat heavy rear	White	
4452 477-905	Idem	Black	



4452 077-000	Plate screw with countersunk Philips head 3.5 x 32 mm (For fixing the end cap bottom slat front side to the bottom slats)		100
--------------	--	--	-----



4452 073-000	Plate screw with countersunk Philips head 3.5 x 19 mm (For fixing the end cap bottom slat rear side to end cap bottom slat front side)		100
--------------	---	--	-----



6253 067-000	Steel reinforcement strip 25 x 12 mm for bottom slat Solidscreen (After cutting the reinforcement strip, treat the cutted side with alu zinc spray part no. 5760 273-000 refer to chapter 9B)	Zinc-plated	3.05
--------------	---	-------------	------

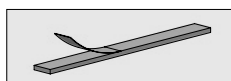
# = Article will be sold out. Special orders remain possible.

# SolidScreen® Jan des Bouvrie

Part number	Description	Paint finish	Length in m <sup>1</sup> Pack. Unit
-------------	-------------	--------------	--



6297 740-000	Nylon tube. To be used as as padding between 2 pieces reinforcement in the bottom slats SolidScreen	Grey	4.0
--------------	---	------	-----



4452 238-000	Neoprene strip 10 x 2 mm self-adhesive, for suppression of impact sound between the bar and the bottom slat.		50
--------------	--	--	----

**One can choose the bristle 5 mm or 8 mm to insert into the bottom slat:**



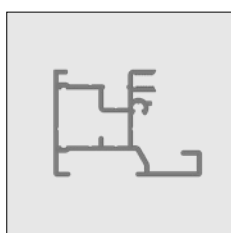
4452 277-000	Bristle 5 mm for bottom slat SolidScreen	Grey	100
--------------	--	------	-----

4452 276-000	Bristle 8 mm for bottom slat SolidScreen	Grey	100
--------------	--	------	-----



4452 283-000	PVC (soft) inlay, bottom slat SolidScreen	Black	300
--------------	---	-------	-----

4452 283-068	Idem, length 7.0 m.	Black	7.0
--------------	---------------------	-------	-----



6297 818-000	Alu side guide SolidScreen 45 x 34 mm	Mill finish	6.0
--------------	---------------------------------------	-------------	-----

6297 818-006	Idem	RAL 9010 pure white	6.0
--------------	------	---------------------	-----

6297 818-755	Idem (* = textured)	RAL 7016 anthracite grey*	6.0
--------------	---------------------	---------------------------	-----

6297 820-000	Alu side guide SolidScreen 45 x 34 mm	Mill finish	7.0
--------------	---------------------------------------	-------------	-----

6297 820-006	Idem	RAL 9010 pure white	7.0
--------------	------	---------------------	-----

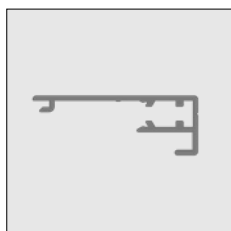
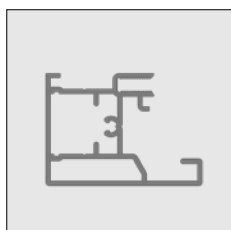
6297 820-755	Idem (* = textured)	RAL 7016 anthracite grey*	7.0
--------------	---------------------	---------------------------	-----

**For the color jet black please look at art. 6297 694-900 and 6297 714-900**

6297 790-000	Alu side guide SolidScreen closed 45 x 34 mm	Mill finish	6.0
--------------	--	-------------	-----

6297 790-006	Idem	RAL 9010 pure white	6.0
--------------	------	---------------------	-----

6297 790-755	Idem (* = textured)	RAL 7016 anthracite grey*	6.0
--------------	---------------------	---------------------------	-----



6297 762-000	Alu cover profile for side guide 6297 790/818/820	Mill finish	6.0
--------------	---	-------------	-----

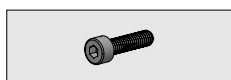
6297 762-006	Idem	RAL 9010 pure white	6.0
--------------	------	---------------------	-----

6297 762-755	Idem (* = textured)	RAL 7016 anthracite grey*	6.0
--------------	---------------------	---------------------------	-----

6297 764-000	Idem	Mill finish	7.0
--------------	------	-------------	-----

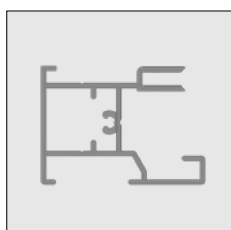
6297 764-006	Idem	RAL 9010 pure white	7.0
--------------	------	---------------------	-----

6297 764-755	Idem (* = textured)	RAL 7016 anthracite grey*	7.0
--------------	---------------------	---------------------------	-----



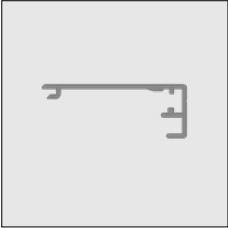

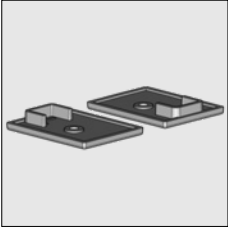
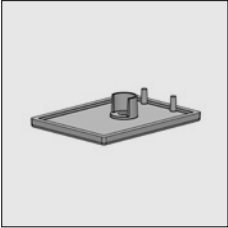

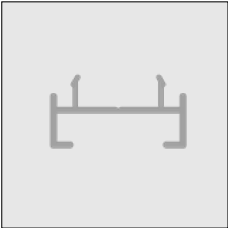
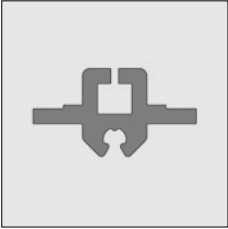

4452 123-000	Stainless steel socket-head bolt M4 x 16 mm cylinder head, (For fixing for cover profile 6297 762/764 to the side guide 6297 790 and 6297 818/820)		100
--------------	--	--	-----

**The side guide and cover profile mentioned below will, when sold out, be followed up by side guide 6297 820-900 and cover profile 6297 764-900**



6297 694-900 #	Alu side guide SolidScreen 45 x 34 mm (* = textured)	RAL 9005 jet black*	7.0
----------------	--	---------------------	-----

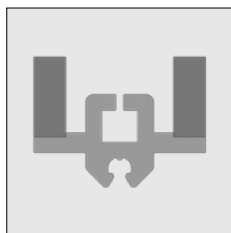
# = Article will be sold out. Special orders remain possible.

Part number	Description	Paint finish	Length in m <sup>1</sup> Pack. Unit
	6297 714-900 # Alu cover profile for side guide 6297 694-900 (* = textured)	RAL 9005 jet black*	7.0
	4452 113-000 Stainless steel socket-head bolt M4 x 10 mm cylinder screw, (For fixing the cover profile 6297 714- to the side guide 6297 694-...)		100
	4452 506-006 Nylon end cap (kit L/R) for side guides 6297 818/820 - 45 x 34mm	White	10
	4452 506-905 Idem	RAL 9005 jet black	10
	4452 480-006 Nylon end cap for side guides 6297 790- and 6297 694-	White	10
	4452 480-905 Idem	RAL 9005 jet black	10
	4452 073-000 Plate screw countersunk Philips head 3,5 x 19 mm (For fixing the end cap to the side guide)		100
<p><b>Below mentioned filing profile can be applied to the following side guides: 6297 818/820-..., 6297 780-... and 6297 724-... If to use the below mentioned profile, please fasten guide &amp; filing profile with a screw into wall and/or window frame</b></p>			
	6297 560-000 Alu filling profile for klick side guides 12 mm	Mill finish	7.0
	6297 560-006 Idem	RAL 9010 pure white	7.0
	6297 560-755 Idem (* = textured)	RAL 7016 anthracite grey*	7.0
	4452 481-008 Nylon guide for single guide and centre guide	Grey	6.0
	4452 485-008 Idem	Grey	7.0
	4452 484-008 Idem	Grey	7.5
<p><b>The side guides can be delivered incl. neoprene strips. Only in lengths of 7500 mm. Please contact the sales department for information about the minimum quantity and delivery time.</b></p>			
	4452 487-000 Neoprene strip 10 x 4 x 60 mm self-adhesive. Install every 50 cm approx. on the nylon guide of the SolidScreen 4452 485-008		135

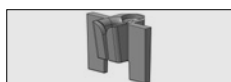
# = Article will be sold out. Special orders remain possible.

# SolidScreen® Jan des Bouvrie

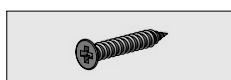
Part number	Description	Paint finish	Length in m <sup>1</sup> Pack. Unit
-------------	-------------	--------------	--



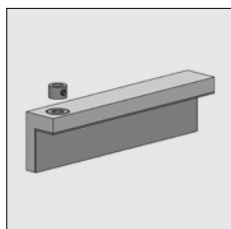
4452 453-068	Nylon guide for single guide and centre guide SolidScreen incl. neoprene strips. Packed in 20 lengths. This article is also available in bulk packaging (500 lengths) 4452 453-008.	Grey	7.5
--------------	---	------	-----



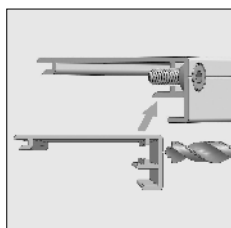
4452 486-008	Nylon funnel for side guide (4452 485-008)	Grey	50
--------------	--	------	----



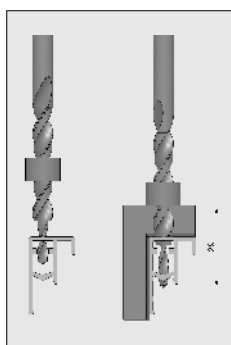
4452 070-000	Plate screw with countersunk Philips head 2.9 x 19 mm (For fixing the funnel on nylon side guide.)		100
--------------	--	--	-----



4452 492-000	Drilling template incl. adjusting ring		
--------------	--	--	--



4452 490-000	Stepped drill 4-7 mm for cover profile 6297 762-... and 6297 764-...		
--------------	--	--	--



4452 491-068	Stepped drill 4-7 mm with adjusting ring for cover profile centre guide 6297 728-...		
--------------	--	--	--

**For stepped drill 4452 491-068, drill first a small hole in the outside wall before using the drilling template. Drill afterwards a hole till the right depth with the drilling template. Remove the burr formation to perfectly fit the cover profile to the centre guide.**

**Further requirements:**  
- Rollers refer to Chapter 1

# = Article will be sold out. Special orders remain possible.