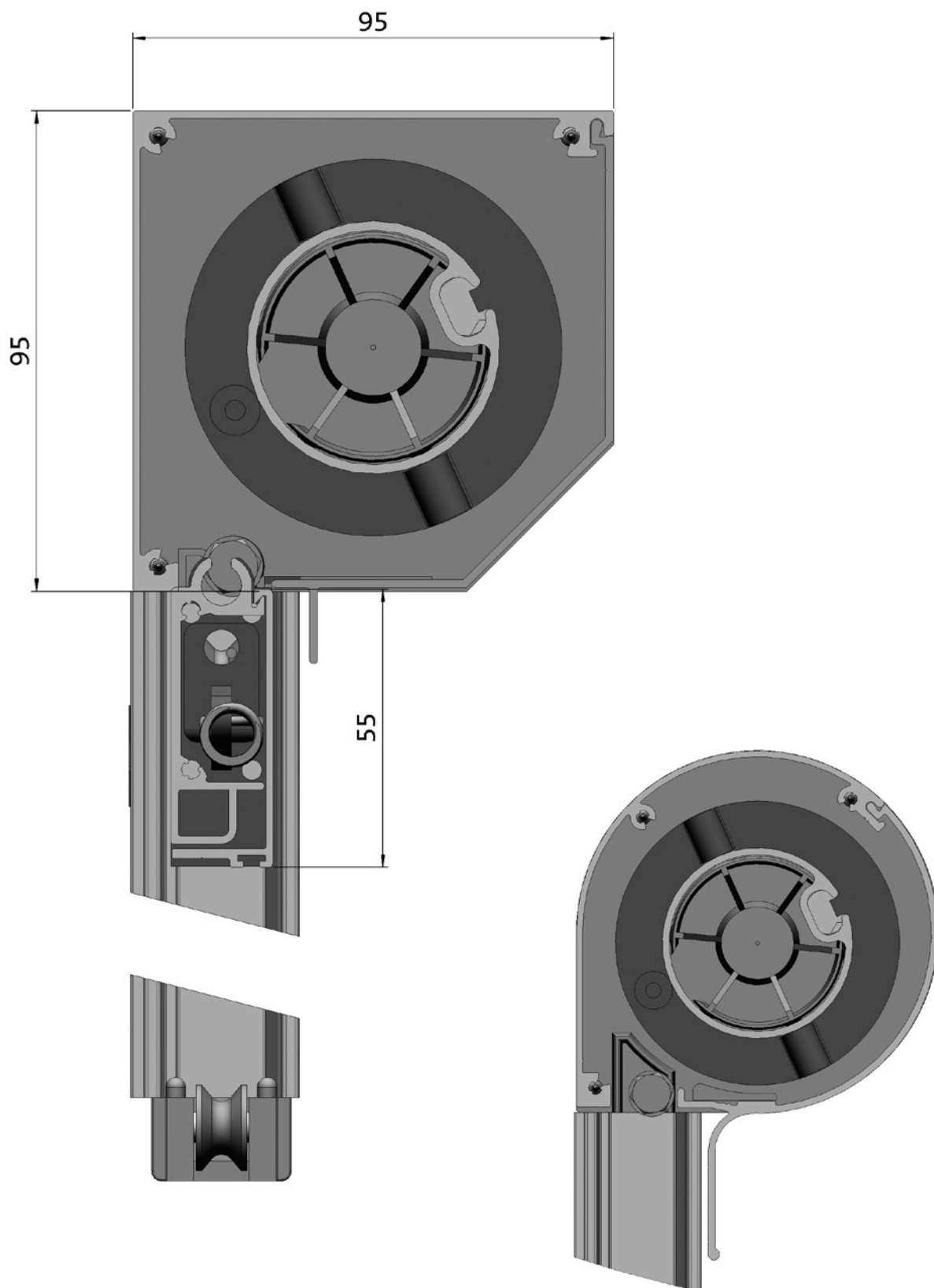




# Excellent® windproof screen



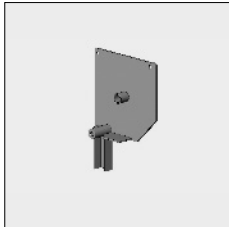
6

Part number	Description	Paint finish	Length in m <sup>1</sup> Pack. Unit
-------------	-------------	--------------	--

**Particulars:**

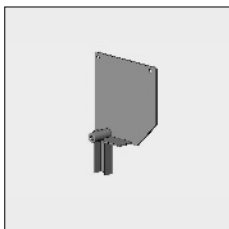
- The round top cover and bottom cover and round cover supports of the Excellent 95 are used for the Windproofscreen round (refer to chapter 6E).
- Width 60-100 cm and height max. 200 cm required set of springs 4452 777-068.
- Width 100-200 cm and height max. 250 cm required set of springs 4452 779-068.
- Width 200-300 cm and height max. 200 cm required set of springs 4452 779-068.

**End fix bracket slanted WITH spindle 12:**



4452 390-000	End fix bracket Excellent windproof screen, with spindle 12 mm, left	Mill finish	
4452 391-000	Idem, right	Mill finish	
4452 390-008	End fix bracket Excellent windproof screen, with spindle 12 mm, left	RAL 7035 light grey	
4452 391-008	Idem, right	RAL 7035 light grey	
4452 390-006	End fix bracket Excellent windproof screen, with spindle 12 mm, left	RAL 9010 pure white	
4452 391-006	Idem, right	RAL 9010 pure white	
4452 390-901	End fix bracket Excellent windproof screen, with spindle 12 mm, left	RAL 9001 cream	
4452 391-901	Idem, right	RAL 9001 cream	
4452 390-716	End fix bracket Excellent windproof screen, with spindle 12 mm, left	RAL 7016 anthracite grey	
4452 391-716	Idem, right	RAL 7016 anthracite grey	

**End fix bracket slanted WITHOUT spindle:**



4452 395-000	End fix bracket Excellent windproof screen, without spindle, left	Mill finish	
4452 396-000	Idem, right	Mill finish	
4452 395-008	End fix bracket Excellent windproof screen, without spindle, left	RAL 7035 light grey	
4452 736-008	Idem, right	RAL 7035 light grey	
4452 395-006	End fix bracket Excellent windproof screen, without spindle, left	RAL 9010 pure white	
4452 396-006	Idem, right	RAL 9010 pure white	
4452 734-901	End fix bracket Excellent windproof screen, without spindle, left	RAL 9001 cream	
4452 396-901	Idem, right	RAL 9001 cream	
4452 395-716	End fix bracket Excellent windproof screen, without spindle, left	RAL 7016 anthracite grey	
4452 396-716	Idem, right	RAL 7016 anthracite grey	



4452 738-068	Runner with bolt end fix bracket Excellent windproof screen		10
--------------	---	--	----

# = Article will be sold out. Special orders remain possible.

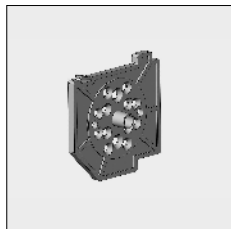
# Excellent® windproof screen

Part number	Description	Paint finish	Length in m <sup>1</sup> Pack. Unit
-------------	-------------	--------------	--

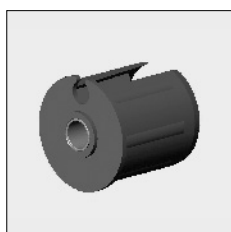
Use the following nylon fixing plates in combination with the end fix brackets without spindle. Please apply the Excellent windproof screen only with electrical operation (therefore not in combination with the gear boxes!). Motors can be fastened directly on the side plates. Fixing holes are not needed anymore. The roller can (together with these plates) be shoved in and out of the cover.

**ATTENTION !!**

On these side plates a patent number 1019354 has been granted.



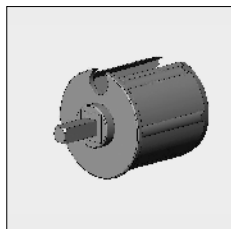
4452 690-080	Nylon fixing plate 95 with spindle 12, left	Grey	25
4452 692-080	Idem, right	Black	25
4452 695-080	Nylon fixing plate 95 without spindle 12, left	Grey	25
4452 697-080	Idem, right	Black	25



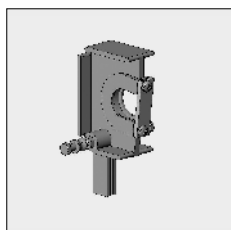
4470 058-068	Nylon bearing roller bung 48 with slide bearing		
--------------	---	--	--



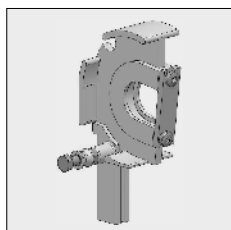
4452 225-068	Nylon bearing roller bung 63 incl. bearing with increased inner ring		25
--------------	--	--	----



4470 061-000	Alu mono plug 48 with square spindle 7 mm		
4470 067-000	Alu mono plug 63 with square spindle 7 mm		



4452 118-068	Alu centre bracket 95 slanted for Excellent windproof screen		
--------------	--	--	--



4452 121-068	Alu centre bracket Screen 95 round for Excellent windproof screen.		
--------------	--	--	--

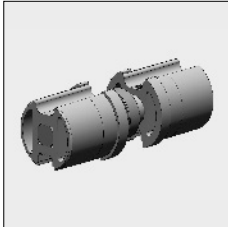
# = Article will be sold out. Special orders remain possible.

# Excellent® windproof screen

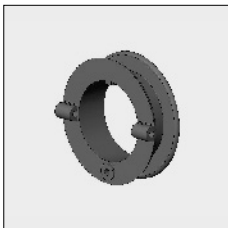
Part number	Description	Paint finish	Length in m <sup>1</sup> Pack. Unit
-------------	-------------	--------------	--



**ATTENTION !!**  
With the centre guide omit the nut of the centre bracket.  
In case of 2 centre guides apply the nut in the middle.



4469 055-068	Alu couple bearing with alu (extruded) roller bungs 48		
4469 065-068	Idem, with alu (extruded) roller bungs 63		



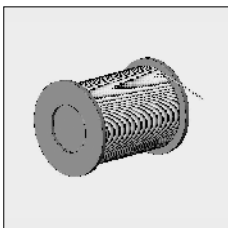
4452 760-068	# Nylon pulley for Excellent windproof screen, incl. fixing material, for electro roller 50 incl. fixing material		
4452 758-000	Idem, for steel roller 63 excl. fixing material		

**With tube 63 with special slot the pulley 4452 758-000 will slide less easily over the tube.**

**For fixing the pulley 4452 758-000:**

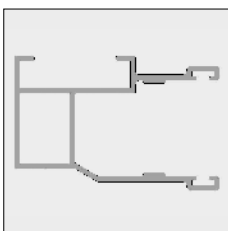


4000 153-000	Stainless steel screw with countersunk Philips head M5 x 8 mm		100
--------------	---	--	-----

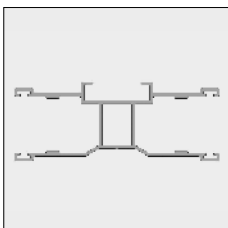


4452 761-000	Cord 1.5 mm	White	100
--------------	-------------	-------	-----

**Required cord length per side guide:  
2 x height + 1.5 x width + 1 m.**



6297 530-000	Alu snap-in side guide for Excellent windproof screen 33.3 x 50.7 mm	Mill finish	7.5
6297 530-016	Idem	Silver anodized	7.5
6297 530-006	Idem	RAL 9010 pure white	7.5
6297 530-901	Idem	RAL 9001 cream	7.5
6297 530-716	Idem	RAL 7016 anthracite grey	7.5



6297 535-000	Alu snap-in side guide Excellent windproof screen 33.3 x 86.4 mm	Mill finish	7.5
6297 535-016	Idem	Silver anodized	7.5
6297 535-006	Idem	RAL 9010 pure white	7.5
6297 535-901	Idem	RAL 9001 cream	7.5
6297 535-716	Idem	RAL 7016 anthracite grey	7.5



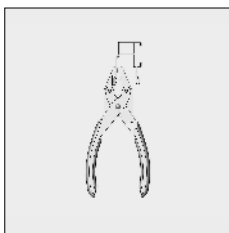
4452 277-000	Bristle 5 mm for snap-in guide for Excellent windproof screen	Grey	100
--------------	---	------	-----

**Note: the bristle must be pinched into the side guides on every 25 cm.**

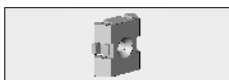
# = Article will be sold out. Special orders remain possible.

# Excellent® windproof screen

Part number	Description	Paint finish	Length in m <sup>1</sup> Pack. Unit
-------------	-------------	--------------	--



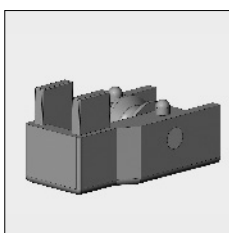
4452 278-000 A pair of pliers for pinching the bristle into the snap-in side guide



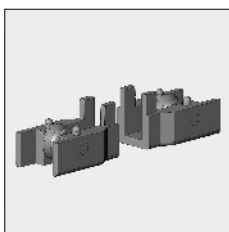
4452 246-080 Nylon fixing block for snap-in side guides White 100

### ATTENTION !!

Always position 1 block on top, there the weight of the top cover is supported by the block instead of the side guides.



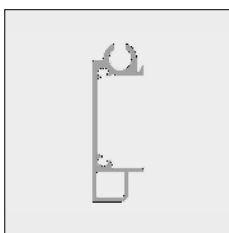
4452 762-000 Nylon end bearing for snap-in side guide Excellent windproof screen Black



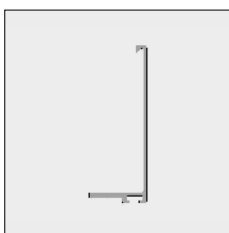
4452 764-068 Nylon double end bearing for centre guide Excellent windproof screen Black



4452 084-000 Stainless steel plate screw with Philips cylinder head 3.5 x 6.5 mm (For fixing the end bearing to the side guide) 100



6297 540-000	Alu front profile rear side Excellent windproof screen	Mill finish	7.5
6297 540-016	Idem	Silver anodized	7.5
6297 540-006	Idem	RAL 9010 pure white	7.5
6297 540-901	Idem	RAL 9001 cream	7.5
6297 540-716	Idem	RAL 7016 anthracite grey	7.5



6297 550-000	Alu front profile front side Excellent windproof screen	Mill finish	7.5
6297 550-016	Idem	Silver anodized	7.5
6297 550-006	Idem	RAL 9010 pure white	7.5
6297 550-901	Idem	RAL 9001 cream	7.5
6297 550-716	Idem	RAL 7016 anthracite grey	7.5

# = Article will be sold out. Special orders remain possible.

# Excellent® windproof screen

Part number	Description	Paint finish	Length in m <sup>1</sup> Pack. Unit
4452 767-000	Neoprene strip 10x8 mm self-adhesive, for suppression of impact sound with front profile (role 5 m.)		
<b>Note: please use pieces of approx. 3 cm.</b>			
4452 084-000	Stainless steel plate screw with Philips cylinder head 3.5 x 6.5 mm (For fixing the front side of the front profile to the rear side of the front profile)		100
4452 276-000	Bristle 8 mm for front profiles Excellent windproof screen	Grey	100
4452 779-068	Set of springs for front profiles Excellent windproof screen (the pre-tension of the springs is about 40%)		
4452 777-068	Set of springs for front profiles Excellent windproof screen for widths between 60 and 100 cm. (The pre-tension of the spring is about 40%)		
<b>Note: The springs to be stretched up to a maximum of 60% of total length!</b>			
4452 765-000	Nylon slide block with runner for front profiles Excellent windproof screen		
4452 094-000	Chipboard screw with countersunk Philips head 3.5 x 30 mm (For fixing the slide block to the front profile)		100

# = Article will be sold out. Special orders remain possible.

