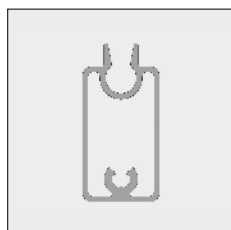
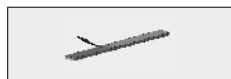
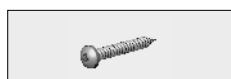
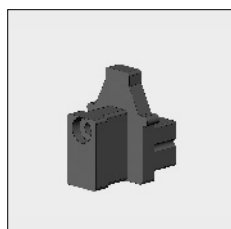
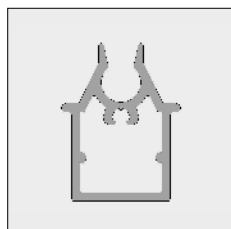


## Bottom slats screens

Part number	Description	Paint finish	Length in m <sup>1</sup> Pack. Unit
6296 782-000	Alu bottom slat screen Trapezium	Mill finish	7.0
6296 784-000	Idem	Mill finish	7.5
6296 782-016	Alu bottom slat screen Trapezium	Silver anodized	7.0
6296 784-016	Idem	Silver anodized	7.5
6296 782-006	Alu bottom slat screen Trapezium	RAL 9010 pure white	7.0
6296 784-006	Idem	RAL 9010 pure white	7.5
6296 782-007 #	Alu bottom slat screen Trapezium	RAL 8019 grey brown	7.0
6296 784-007 #	Idem	RAL 8019 grey brown	7.5
6296 782-901	Alu bottom slat screen Trapezium	RAL 9010 cream	7.0
6296 784-901	Idem	RAL 9010 cream	7.5
6296 782-716	Alu bottom slat screen Trapezium	RAL 7016 anthracite grey	7.0
6296 784-716	Idem	RAL 7016 anthracite grey	7.5
6296 782-755	Alu bottom slat screen Trapezium (* = textured)	RAL 7016 anthracite grey*	7.0
6296 784-755	Idem (* = textured)	RAL 7016 anthracite grey*	7.5
4452 209-008	Nylon side guide bung closed (for bottom slat Trapezium)	Grey	100
4452 209-006	Idem	White	100
4452 209-905	Idem	Black	100
4452 087-000	Stainless steel plate screw with Philips cylinder head 3.5 x 32 mm (For fixing the side guide bung to the bottom slat Trapezium)		100
6253 068-000	Steel reinforcement bar round 12 mm for bottom slat Trapezium	Zinc-plated	3.0
4452 238-000	Neoprene strip 10 x 2 mm, self-adhesive, for suppression of impact sound between bar and the bottom slat.		50
6296 642-000	Alu bottom slat screen	Mill finish	7.0
6296 643-000	Idem	Mill finish	7.5
6296 642-016	Alu bottom slat screen	Silver anodized	7.0
6296 643-016	Idem	Silver anodized	7.5
6296 642-006	Alu bottom slat screen	RAL 9010 pure white	7.0
6296 643-006	Idem	RAL 9010 pure white	7.5



# = Article will be sold out. Special orders remain possible.

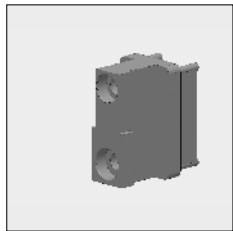
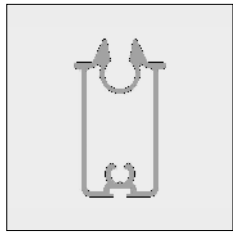
## Bottom slats screens

Part number	Description	Paint finish	Length in m <sup>1</sup> Pack. Unit
6296 642-007	Alu bottom slat screen	RAL 8019 grey brown	7.0
6296 642-901	Alu bottom slat screen	RAL 9010 cream	7.0
6296 643-901	Idem	RAL 9010 cream	7.5
6296 643-716	Alu bottom slat screen	RAL 7016 anthracite grey	7.5
6296 643-755	Alu bottom slat screen (* = textured)	RAL 7016 anthracite grey*	7.5
6296 834-000	Alu bottom slat with stopper and groove for bristle profile	Mill finish	7.5
6296 834-016	Idem	Silver anodized	7.5
6296 834-006	Idem	RAL 9010 pure white	7.5
6296 834-901	Idem	RAL 9001 cream	7.5
4452 276-000	Bristle 8 mm for side guides and bottom slats blackout Screen	Grey	100
5302 130-000	Steel reinforcement strip 28 x 3 mm (10 lengths per package)	Zinc-plated	2.5
4452 135-080	Nylon side guide bung for bottom slats 6296 640/642/643 and 834	Black	100
4452 090-000	Stainless steel plate screw with Philips cylinder head 4.2 x 32 mm (For fixing the side guide bung to the bottom slat)		100

The sealing caps below with "anti Rattle" springs can be applied with side guide bung 4452 209- (for bottom slat trapezium) and side guide bung 4452 135- (for high bottom slat)

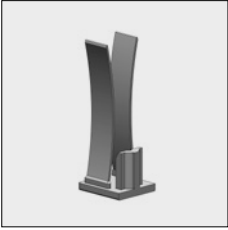
As the side guide bungs are closed in, when in the lowest position between the lips, the noise is significantly reduced. Be sure to use enough reinforcement.

4452 266-905	Nylon sealing cap with springs for several side guides.	Black	
--------------	---	-------	--



## Bottom slats screens

Part number	Description	Paint finish	Length in m <sup>1</sup> Pack. Unit
-------------	-------------	--------------	--



4452 268-905	Nylon sealing cap with springs for centre guides. Per centre guide 2 pieces.	Black	
--------------	---	-------	--



4452 070-000	Stainless steel cross screw VK/KK 2.9 x 19 mm (For fixing the sealing cap with springs to the side guide)		100
--------------	--	--	-----

