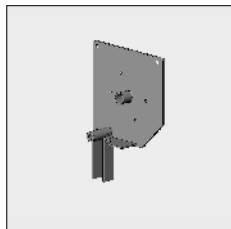
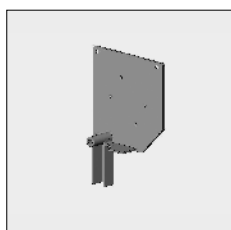


Part number	Description	Paint finish	Length in m ¹ Pack. Unit
-------------	-------------	--------------	--

End fix bracket slanted WITH spindle 12:



4452 380-000	End fix bracket Excellent 95 slanted with spindle 12, left	Mill finish	
4452 381-000	Idem, right	Mill finish	
4452 380-008	End fix bracket Excellent 95 slanted with spindle 12, left	RAL 7035 light grey	
4452 381-008	Idem, right	RAL 7035 light grey	
4452 380-006	End fix bracket Excellent 95 slanted with spindle 12, left	RAL 9010 pure white	
4452 381-006	Idem, right	RAL 9010 pure white	
4452 380-007 #	End fix bracket Excellent 95 slanted with spindle 12, left	RAL 8019 grey brown	
4452 381-007 #	Idem, right	RAL 8019 grey brown	
4452 380-901	End fix bracket Excellent 95 slanted with spindle 12, left	RAL 9001 cream	
4452 381-901	Idem, right	RAL 9001 cream	
4452 380-716	End fix bracket Excellent 95 slanted with spindle 12, left	RAL 7016 anthracite grey	
4452 381-716	Idem, right	RAL 7016 anthracite grey	



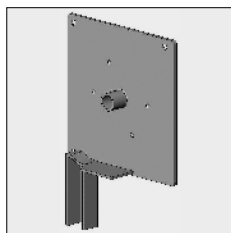
End fix bracket slanted WITHOUT spindle:

4453 000-000	End fix bracket Excellent 95 slanted without spindle, left	Mill finish	
4453 002-000	Idem, right	Mill finish	
4453 000-008	End fix bracket Excellent 95 slanted without spindle, left	RAL 7035 light grey	
4453 002-008	Idem, right	RAL 7035 light grey	
4453 000-006	End fix bracket Excellent 95 slanted without spindle, left	RAL 9010 pure white	
4453 002-006	Idem, right	RAL 9010 pure white	
4453 000-007	End fix bracket Excellent 95 slanted without spindle, left	RAL 8019 grey brown	
4453 002-007	Idem, right	RAL 8019 grey brown	
4453 000-901	End fix bracket Excellent 95 slanted without spindle, left	RAL 9001 cream	
4453 002-901	Idem, right	RAL 9001 cream	
4453 000-716	End fix bracket Excellent 95 slanted without spindle, left	RAL 7016 anthracite grey	
4453 002-716	Idem, right	RAL 7016 anthracite grey	
4453 000-755	End fix bracket Excellent 95 slanted without spindle, left (* = textured)	RAL 7016 anthracite grey*	
4453 002-755	Idem, right (* = textured)	RAL 7016 anthracite grey*	

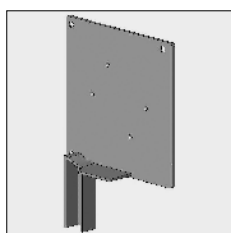
= Article will be sold out. Special orders remain possible.

Excellent® 95

Part number	Description	Paint finish	Length in m ¹ Pack. Unit
-------------	-------------	--------------	--



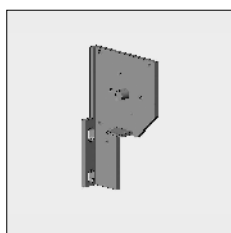
4453 120-000	End fix bracket Excellent 95 square with spindle 12, left	Mill finish	
4453 122-000	Idem, right	Mill finish	
4453 120-008	End fix bracket Excellent 95 square with spindle 12, left	RAL 7035 light grey	
4453 122-008	Idem, right	RAL 7035 light grey	
4453 120-006	End fix bracket Excellent 95 square with spindle 12, left	RAL 9010 pure white	
4453 122-006	Idem, right	RAL 9010 pure white	



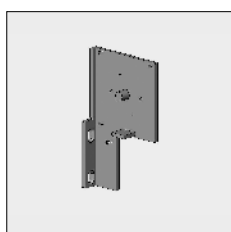
4453 124-000	End fix bracket Excellent 95 square without spindle, left	Mill finish	
4453 126-000	Idem, right	Mill finish	
4453 124-008	End fix bracket Excellent 95 square without spindle, left	RAL 7035 light grey	
4453 126-008	Idem, right	RAL 7035 light grey	
4453 124-006	End fix bracket Excellent 95 square without spindle, left	RAL 9010 pure white	
4453 126-006	Idem, right	RAL 9010 pure white	

6

Apply the end fix bracket model below only with snap-in side guide 30 x 20 mm 6296 688-... (refer to chapter 6G) or with steel wire guide 4452 038-068 and 4000 133-000 (refer to chapter 6G).



4452 320-000	Alu die cast end fix bracket Excellent 95 standard slanted, with spindle 12, left	Mill finish	
4452 322-000	Idem, right	Mill finish	
4452 320-008	Alu die cast end fix bracket Excellent 95 standard slanted, with spindle 12, left	RAL 7035 light grey	
4452 322-008	Idem, right	RAL 7035 light grey	
4452 320-006	Alu die cast end fix bracket Excellent 95 standard slanted, with spindle 12, left	RAL 9010 pure white	
4452 322-006	Idem, right	RAL 9010 pure white	



4452 350-000	Alu die cast end fix bracket Excellent 95 standard square, with spindle 12, left	Mill finish	
4452 352-000	Idem, right	Mill finish	
4452 350-008	Alu die cast end fix bracket Excellent 95 standard square, with spindle 12, left	RAL 7035 light grey	
4452 352-008	Idem, right	RAL 7035 light grey	

= Article will be sold out. Special orders remain possible.

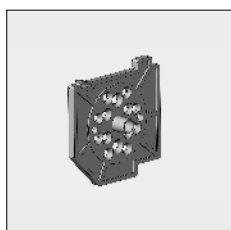
Part number	Description	Paint finish	Length in m ¹ Pack. Unit
-------------	-------------	--------------	--

Use the nylon fixing plates below in combination with end fix brackets without spindle (excl. 4452 324/326-006):

**Motors and gear boxes can be fixed directly to the fixing plates.
There are no fixing holes needed in the end fix bracket.**

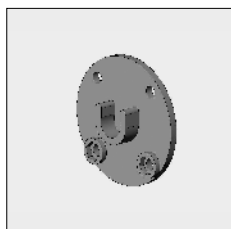
ATTENTION !!

On these fixing plates a patent number 1019354 has been granted.



4452 690-080	Nylon fixing plate 95 with spindle 12, left	Grey	25
4452 692-080	Idem, right	Black	25

4452 695-080	Nylon fixing plate 95 without spindle, left	Grey	25
4452 697-080	Idem, right	Black	25



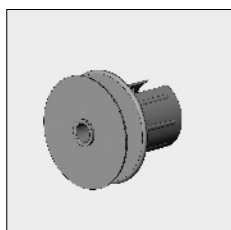
4452 231-080	Nylon bearing support for spindle 12 mm	Black	25
--------------	---	-------	----



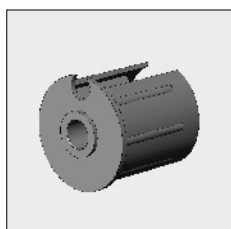
4000 156-000	Plate screw with countersunk Philips head M5 x 10 mm (For fixing bearing support)		100
--------------	--	--	-----



4452 017-000	Stainless steel nut M5 (for fixing bearing support)	Zinc-plated	100
--------------	---	-------------	-----

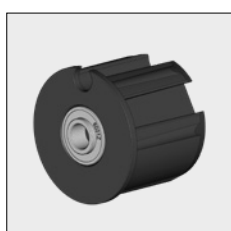


4452 212-080	Nylon bearing roller bung 48 with pulley 75 mm, spindle hole 12 mm, flange 2 mm (for manual tape 14 mm)		25
4452 213-068	Nylon bearing roller bung 63 with pulley 75 mm, spindle hole 12 mm, flange 2 mm (for manual tape 14 mm)		



4452 210-080	Nylon bearing roller bung 48, spindle hole 12 mm, flange 2 mm		25
4470 058-068	Nylon bearing roller bung 48 with slide bearing		10

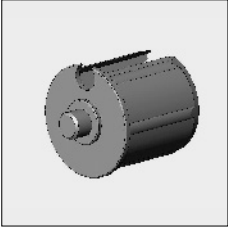
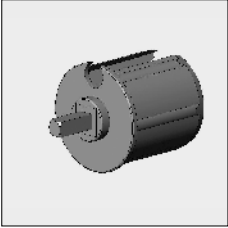
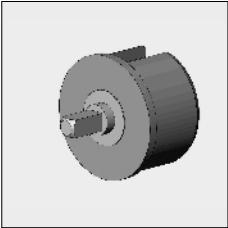
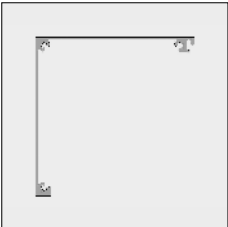

4452 216-080	Nylon bearing roller bung 63, spindle hole 12 mm, flange 2 mm		25
--------------	---	--	----



4452 225-068	Nylon bearing roller bung 63 incl. bearing with increased inner ring		25
--------------	--	--	----

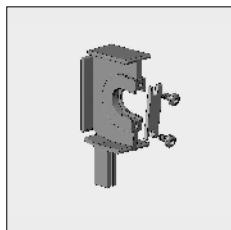
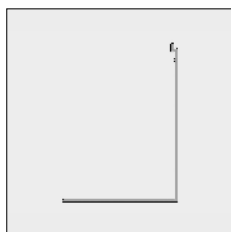
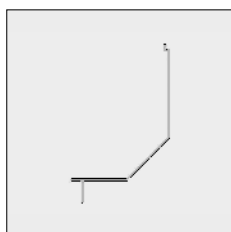
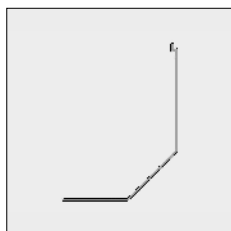
= Article will be sold out. Special orders remain possible.

Excellent® 95

Part number	Description	Paint finish	Length in m ¹ Pack. Unit	
	4452 211-080	Nylon bearing roller bung 48, spindle 12 mm, flange 2 mm	25	
	4452 218-080	Nylon bearing roller bung 63, spindle 12 mm, flange 2 mm	25	
	4470 066-080	Nylon mono plug 48 with square spindle 7 mm	25	
	4470 061-000	Alu mono plug 48 with square spindle 7 mm		
	4470 071-080	Nylon mono plug 63 with square spindle 7 mm	25	
	4470 067-000	Alu mono plug 63 with square spindle 7 mm		
	To prevent screens from becoming erroneously reversed, use the free running mono plug below, in combination with gear boxes without end limiter:			
	4470 072-000	Nylon mono plug 48, with free running with square spindle 7 mm, left		
	4470 074-000	Idem, right		
	4470 076-000	Nylon mono plug 63, with free running with square spindle 7 mm, left		
4470 078-000	Idem, right			
	6296 770-000	Alu top cover Excellent 95	Mill finish	7.0
	6296 772-000	Idem	Mill finish	7.5
	6296 770-016	Alu top cover Excellent 95	Silver anodized	7.0
	6296 772-016	Idem	Silver anodized	7.5
	6296 770-006	Alu top cover Excellent 95	RAL 9010 pure white	7.0
	6296 772-006	Idem	RAL 9010 pure white	7.5
	6296 770-007	Alu top cover Excellent 95	RAL 8019 grey brown	7.0
	6296 770-901	Alu top cover Excellent 95	RAL 9001 cream	7.0
	6296 772-901	Idem	RAL 9001 cream	7.5
	6296 770-716	Alu top cover Excellent 95	RAL 7016 anthracite grey	7.0
	6296 770-755	Alu top cover Excellent 95 (* = textured)	RAL 7016 anthracite grey*	7.0
		4452 083-000	Plate screw with countersunk Philips head 3.5 x 16 mm (For fixing the top cover to the end fix bracket)	

= Article will be sold out. Special orders remain possible.

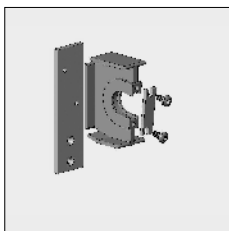
Part number	Description	Paint finish	Length in m ¹ Pack. Unit
6296 890-000	Alu bottom cover slanted Excellent 95	Mill finish	7.0
6296 891-000	Idem	Mill finish	7.5
6296 764-016	Alu bottom cover slanted Excellent 95	Silver anodized	7.0
6296 891-016	Idem	Silver anodized	7.5
6296 890-006	Alu bottom cover slanted Excellent 95	RAL 9010 pure white	7.0
6296 891-006	Idem	RAL 9010 pure white	7.5
6296 890-007 #	Alu bottom cover slanted Excellent 95	RAL 8019 grey brown	7.0
6296 890-901	Alu bottom cover slanted Excellent 95	RAL 9001 cream	7.0
6296 891-901	Idem	RAL 9001 cream	7.5
6297 360-000	Alu bottom cover slanted with lip Excellent 95	Mill finish	7.0
6297 362-000	Idem	Mill finish	7.5
6297 360-016	Idem	Silver anodized	7.0
6297 360-006	Idem	RAL 9010 pure white	7.0
6296 360-007	Idem	RAL 8019 grey brown	7.0
6297 360-901	Idem	RAL 9001 cream	7.0
6297 360-716	Idem	RAL 7016 anthracite grey	7.0
6297 360-755	Idem (* = textured)	RAL 7016 anthracite grey*	7.0
6297 382-000	Alu bottom cover square Excellent 95	Mill finish	7.5
6297 382-016	Idem	Silver anodized	7.5
6297 382-006	Idem	RAL 9010 pure white	7.5
4452 084-000	Stainless steel plate screw with Philips cylinder head 3.5 x 6.5 mm (For fixing the bottom cover to the end fix bracket)		100
4452 097-000	Stainless steel (AISI410) drill screw ZB,BK/KK 3.5 x 9.5 mm (For fixing the bottom cover to the end fix bracket, drilling is not necessary)		100
4452 116-068	Alu centre bracket Excellent 95		



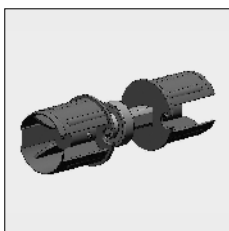
= Article will be sold out. Special orders remain possible.

Part number	Description	Paint finish	Length in m ¹ Pack. Unit
-------------	-------------	--------------	--

**When using the standard end fix brackets, in combination with snap-in side guide 30 x 20 mm
Please apply the centre bracket below:**



4452 136-068	Centre bracket Excellent 95 with wall plate
--------------	---



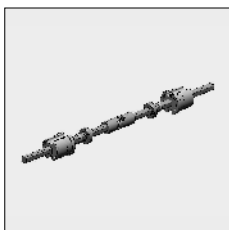
4452 182-068	Couple bearing screen Excellent with Nylon roller bungs 48/50
--------------	---

4469 055-068	Idem, with alu (extruded) roller bungs 48/50
--------------	--

4452 184-068	Couple bearing screen Excellent with Nylon roller bungs 63/65
--------------	---

4469 065-068	Idem, with alu (extruded) roller bungs 63
--------------	---

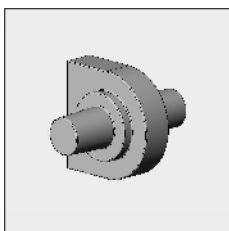
Note: With nylon couple bearing, couple max. 1x !



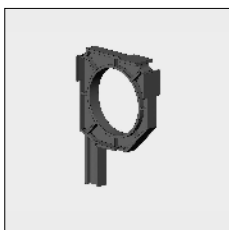
4470 022-068	Couple bearing screen Excellent with cross joint (max. 450, not stainless steel) with alu roller bungs 48/50
--------------	---

4470 024-068	Idem, with alu roller bungs 63
--------------	--------------------------------

If there are more screens in one cover with individual operation, please apply the double spindle below:



4452 188-000	Double spindle 12 mm for centre bracket
--------------	---



4452 127-000	Nylon centre slide bearing for screen 95, spindle hole 65 mm
--------------	--

Further requirements:
 - Rollers refer to chapter 1
 - Side guides refer to chapter 6G
 - Bottom rails refer to chapter 6H
 - Profiles for blackout screens refer to chapter 6I

= Article will be sold out. Special orders remain possible.