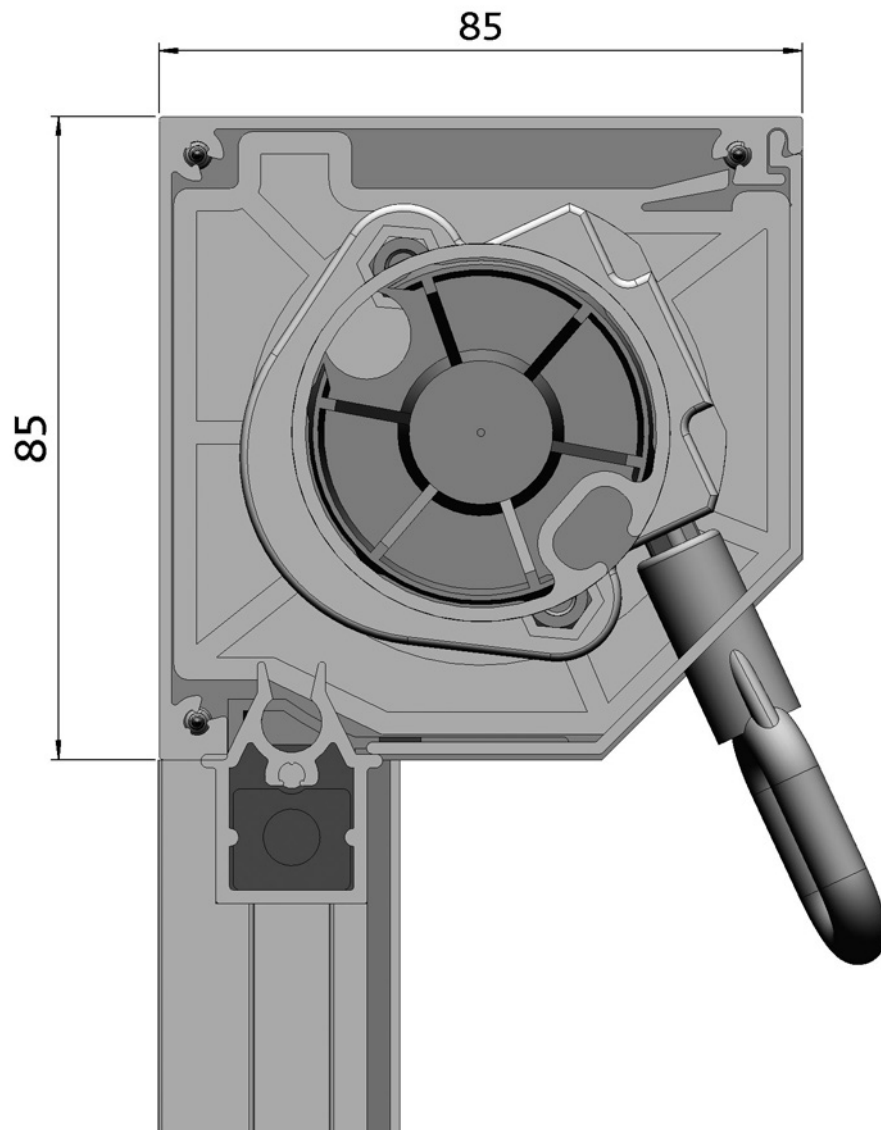
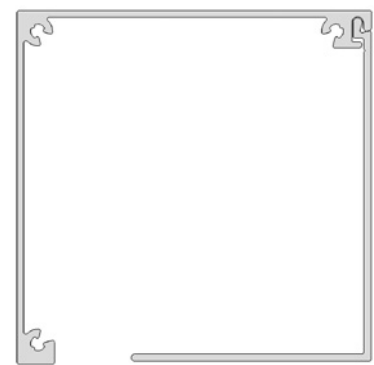
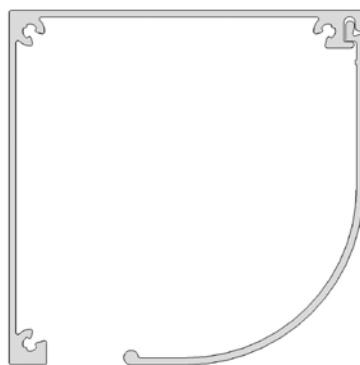
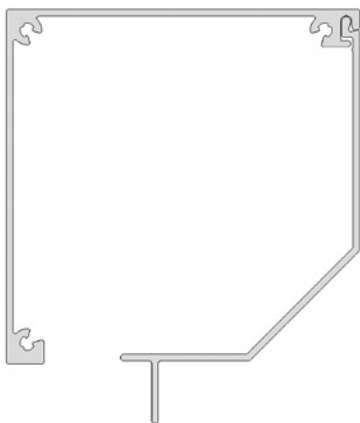


Excellent® 85

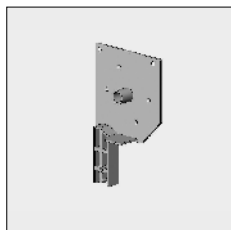


6



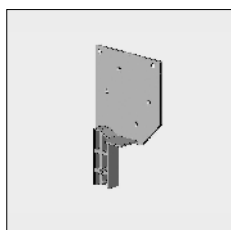
Part number	Description	Paint finish	Length in m ¹ Pack. Unit
-------------	-------------	--------------	--

End fix brackets slanted WITH spindle 12:



4452 180-000	End fix bracket Excellent 85, left	Mill finish	
4452 181-000	Idem, right	Mill finish	
4452 180-008	End fix bracket Excellent 85, left	RAL 7035 light grey	
4452 181-008	Idem, right	RAL 7035 light grey	
4452 180-006	End fix bracket Excellent 85, left	RAL 9010 pure white	
4452 181-006	Idem, right	RAL 9010 pure white	
4452 180-007	# End fix bracket Excellent 85, left	RAL 8019 grey brown	
4452 181-007	# Idem, right	RAL 8019 grey brown	
4452 180-901	End fix bracket Excellent 85, left	RAL 9001 cream	
4452 181-901	Idem, right	RAL 9001 cream	
4452 180-716	End fix bracket Excellent 85, left	RAL 7016 anthracite grey	
4452 181-716	Idem, right	RAL 7016 anthracite grey	
4452 180-906	# End fix bracket Excellent 85, left	RAL 9006 white aluminium	
4452 181-906	# Idem, right	RAL 9006 white aluminium	

End fix brackets slanted WITHOUT spindle:

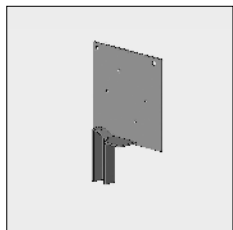
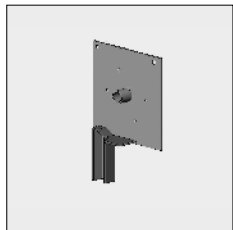
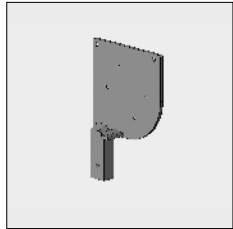
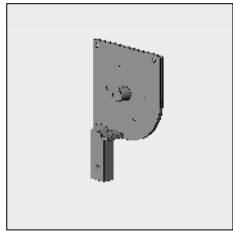


4452 185-000	End fix bracket Excellent 85, left	Mill finish	
4452 186-000	Idem, right	Mill finish	
4452 185-008	End fix bracket Excellent 85, left	RAL 7035 light grey	
4452 186-008	Idem, right	RAL 7035 light grey	
4452 185-006	End fix bracket Excellent 85, left	RAL 9010 pure white	
4452 186-006	Idem, right	RAL 9010 pure white	
4452 185-007	# End fix bracket Excellent 85, left	RAL 8019 grey brown	
4452 186-007	# Idem, right	RAL 8019 grey brown	
4452 185-901	End fix bracket Excellent 85, left	RAL 9001 cream	
4452 186-901	Idem, right	RAL 9001 cream	
4452 185-716	End fix bracket Excellent 85, left	RAL 7016 anthracite grey	
4452 186-716	Idem, right	RAL 7016 anthracite grey	
4452 185-906	# End fix bracket Excellent 85, left	RAL 9006 white aluminium	

= Article will be sold out. Special orders remain possible.

Excellent® 85

Part number	Description	Paint finish	Length in m ¹ Pack. Unit
4452 510-000	Alu die cast end fix bracket Excellent 85 rounded, with spindle 12, left	Mill finish	
4452 512-000	Idem, right	Mill finish	
4452 510-008	Alu die cast end fix bracket Excellent 85 rounded, with spindle 12, left	RAL 7035 light grey	
4452 512-008	Idem, right	RAL 7035 light grey	
4452 510-006 #	Alu die cast end fix bracket Excellent 85 rounded, with spindle 12, left	RAL 9010 pure white	
4452 512-006 #	Idem, right	RAL 9010 pure white	
4452 510-007 #	Alu die cast end fix bracket Excellent 85 rounded, with spindle 12, left	RAL 8019 grey brown	
4452 512-007 #	Idem, right	RAL 8019 grey brown	
4452 510-901	Alu die cast end fix bracket Excellent 85 rounded, with spindle 12, left	RAL 9001 cream	
4452 512-901	Idem, right	RAL 9001 cream	
4452 514-000	Alu die cast end fix bracket Excellent 85 rounded, without spindle 12, left	Mill finish	
4452 516-000	Idem, right	Mill finish	
4453 110-000	Alu end fix bracket Excellent 85 square with spindle 12, left	Mill finish	
4453 112-000	Idem, right	Mill finish	
4453 110-008 #	Alu end fix bracket Excellent 85 square with spindle 12, left	RAL 7035 light grey	
4453 110-006 #	Alu end fix bracket Excellent 85 square with spindle 12, left	RAL 9010 pure white	
4453 112-006 #	Idem, right	RAL 9010 pure white	
4453 114-000	Alu end fix bracket Excellent 85 square without spindle, left	Mill finish	
4453 116-000	Idem, right	Mill finish	
4453 114-008	Zamac end fix bracket Excellent 85 square without spindle, left	RAL 7035 light grey	
4453 116-008	Idem, right	RAL 7035 light grey	
4453 114-006	Zamac end fix bracket Excellent 85 square without spindle, left	RAL 9010 pure white	
4453 116-006	Idem, right	RAL 9010 pure white	

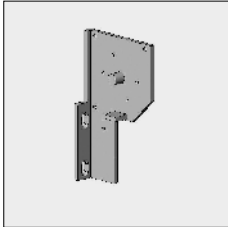


6

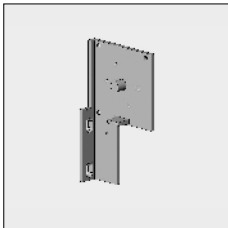
= Article will be sold out. Special orders remain possible.

Part number	Description	Paint finish	Length in m ¹ Pack. Unit
-------------	-------------	--------------	--

Use the end fix bracket model below only with snap-in side guide 30 x 20 mm 6296 688-... (refer to chapter 6G) or with steel wire guiding 4452 038-068 and 4000 133-000 (refer to Chapter 6G).



4452 310-000	# Alu die cast end fix bracket Excellent 85 standard slanted, with spindle 12, left	Mill finish	
4452 312-000	# Idem, right	Mill finish	
4452 310-008	# Alu die cast end fix bracket Excellent 85 standard slanted, with spindle 12, left	RAL 7035 light grey	
4452 312-008	# Idem, right	RAL 7035 light grey	
4452 310-006	# Alu die cast end fix bracket Excellent 85 standard slanted, with spindle 12, left	RAL 9010 pure white	
4452 312-006	# Idem, right	RAL 9010 pure white	



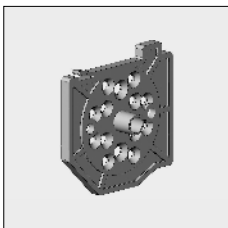
4452 340-000	# Alu die cast end fix bracket Excellent 85 standard square, with spindle 12, left	Mill finish	
4452 342-000	# Idem, right	Mill finish	
4452 340-008	# Alu die cast end fix bracket Excellent 85 standard square, with spindle 12, left	RAL 7035 light grey	
4452 342-008	# Idem, right	RAL 7035 light grey	

Use the nylon fixing plates below in combination with end fix brackets without spindle (excl. 4452 514/516-000)

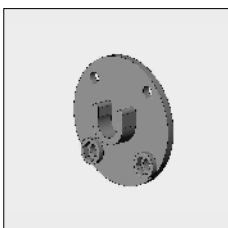
Motors and gear boxes can be fixed directly to the fixing plates. There are no fixing holes needed in the end fix bracket.

ATTENTION !!

On these fixing plates a patent number 1019354 has been granted.



4452 680-080	Nylon fixing plate 85 with spindle 12, left	Grey	25
4452 682-080	Idem, right	Black	25
4452 685-080	Nylon fixing plate 85 without spindle, left	Grey	25
4452 687-080	Idem, right	Black	25



4452 231-080	Nylon bearing support for spindle 12 mm	Black	25
--------------	---	-------	----



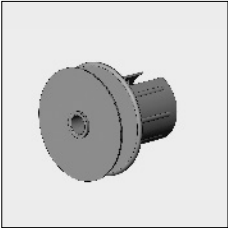
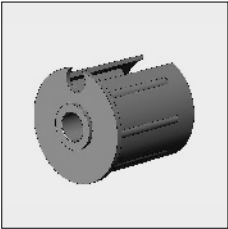
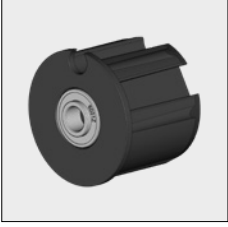
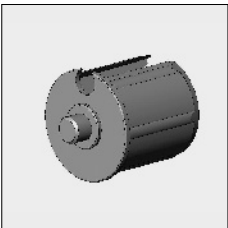
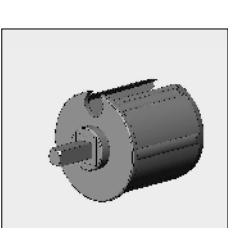
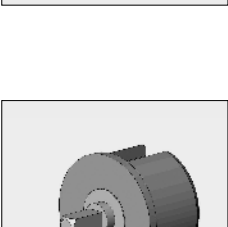
4000 156-000	Plate screw with countersunk Philips head M5 x 10 mm (For fixing the bearing support)		100
--------------	---	--	-----



4452 017-000	Stainless steel nut M5 (for fixing bearing support)	Zinc-plated	100
--------------	---	-------------	-----

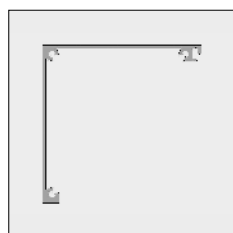
= Article will be sold out. Special orders remain possible.

Excellent® 85

Part number	Description	Paint finish	Length in m ¹ Pack. Unit
	4452 212-080	Nylon bearing roller bung 48 with pulley 75 mm, spindle hole 12 mm, flange 2 mm (for manual tape 14 mm)	25
	4452 213-068	Nylon bearing roller bung 63 with pulley 75 mm, spindle hole 12 mm, flange 2 mm (for manual tape 14 mm)	
	4452 210-080	Nylon bearing roller bung 48, spindle hole 12 mm, flange 2 mm	25
	4470 058-068	Nylon bearing roller bung 48, with slide bearing	10
	4452 216-080	Nylon bearing roller bung 63, spindle hole 12 mm, flange 2 mm	25
	4452 225-068	Nylon bearing roller bung 63 incl. bearing with increased inner ring	25
	4452 211-080	Nylon bearing roller bung 48, spindle 12 mm, flange 2 mm	25
	4452 218-080	Nylon bearing roller bung 63, spindle 12 mm, flange 2 mm	25
	4470 066-080	Nylon mono plug 48, with square spindle 7 mm	25
	4470 061-000	Alu mono plug 48, with square spindle 7 mm	
	4470 071-080	Nylon mono plug 63, with square spindle 7 mm	25
	4470 067-000	Alu mono plug 63, with square spindle 7 mm	
	4470 072-000	Nylon mono plug 48, with free running with square spindle 7 mm, left	
	4470 074-000	Idem, right	
	4470 076-000	Nylon mono plug 63, with free running with square spindle 7 mm, left	
	4470 078-000	Idem, right	

To prevent screens from becoming erroneously reversed, use the free running mono plug below, in combination with gear boxes without end limiter:

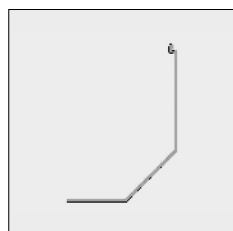
= Article will be sold out. Special orders remain possible.



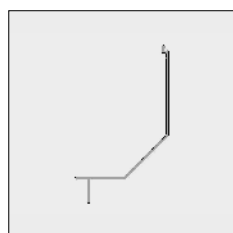
Part number	Description	Paint finish	Length in m ¹ Pack. Unit
6296 756-000	Alu top cover Excellent 85	Mill finish	7.0
6296 758-000	Idem	Mill finish	7.5
6296 756-016	Alu top cover Excellent 85	Silver anodized	7.0
6296 758-016	Idem	Silver anodized	7.5
6296 756-006	Alu top cover Excellent 85	RAL 9010 pure white	7.0
6296 758-006	Idem	RAL 9010 pure white	7.5
6296 756-007 #	Alu top cover Excellent 85	RAL 8019 grey brown	7.0
6296 756-901	Alu top cover Excellent 85	RAL 9001 cream	7.0
6296 758-901	Idem	RAL 9001 cream	7.5
6296 756-716	Alu top cover Excellent 85	RAL 7016 anthracite grey	7.0



4452 083-000	Plate screw with countersunk Philips head 3.5 x 16 mm (For fixing the top cover to the end fix bracket)		100
--------------	--	--	-----



6296 748-000	Alu bottom cover slanted Excellent 85	Mill finish	7.0
6296 749-000	Idem	Mill finish	7.5
6296 748-016	Alu bottom cover slanted Excellent 85	Silver anodized	7.0
6296 749-016	Idem	Silver anodized	7.5
6296 748-006	Alu bottom cover slanted Excellent 85	RAL 9010 pure white	7.0
6296 749-006	Idem	RAL 9010 pure white	7.5
6296 748-007 #	Alu bottom cover slanted Excellent 85	RAL 8019 grey brown	7.0
6296 748-901	Alu bottom cover slanted Excellent 85	RAL 9001 cream	7.0
6296 749-901	Idem	RAL 9001 cream	7.5
6296 748-716	Alu bottom cover slanted Excellent 85	RAL 7016 anthracite grey	7.0



6296 645-000	Alu bottom cover slanted with lip Excellent 85	Mill finish	7.0
6296 645-016	Idem	Silver anodized	7.0
6296 645-006	Idem	RAL 9010 pure white	7.0
6296 645-007 #	Idem	RAL 8019 grey brown	7.0
6296 645-901	Idem	RAL 9001 cream	7.0
6296 645-716	Idem	RAL 7016 anthracite grey	7.0

= Article will be sold out. Special orders remain possible.

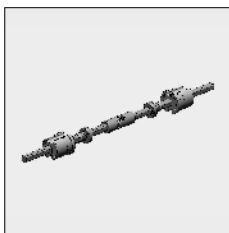
Excellent® 85

Part number	Description	Paint finish	Length in m ¹ Pack. Unit
6296 875-000	Alu bottom cover square Excellent 85	Mill finish	7.0
6296 878-000	Idem	Mill finish	7.5
6296 875-016 #	Alu bottom cover square Excellent 85	Silver anodized	7.0
6296 878-016	Idem	Silver anodized	7.5
6296 875-006	Alu bottom cover square Excellent 85	RAL 9010 pure white	7.0
6296 878-006	Idem	RAL 9010 pure white	7.5
6296 650-000	Alu bottom cover rounded Excellent 85	Mill finish	7.0
6296 650-006	Idem	RAL 9010 pure white	7.0
6296 650-016	Idem	Silver anodized	7.0
6296 650-901	Idem	RAL 9001 cream	7.0
4452 084-000	Plate screw with Philips cylinder head 3,5 x 6,5 mm (For fixing the bottom cover to the end fix bracket)		100
4452 097-000	Stainless steel (AISI410) drill screw ZB,BK/KK 3,5 x 9,5 mm (For fixing the bottom cover to the end fix bracket, drilling is not necessary)		100
4452 115-068	Alu centre bracket Excellent 85		
<p>When using the standard end fix brackets, in combination with snap-in side guide 30 x 20 mm please apply the centre bracket below:</p>			
4452 134-068 #	Centre bracket Excellent 85 with wall plate		
4452 182-068	Couple bearing ScreenExcellent with Nylon roller bungs 48/50		
4469 055-068	Idem, with alu (extruded) roller bungs 48/50		
4452 184-068	Couple bearing ScreenExcellent with Nylon roller bungs 63/65		
4469 065-068	Idem, with alu (extruded) roller bungs 63		

Note: With nylon couple bearing, couple max. 1x!

= Article will be sold out. Special orders remain possible.

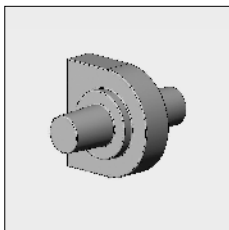
Part number	Description	Paint finish	Length in m ¹ Pack. Unit
-------------	-------------	--------------	--



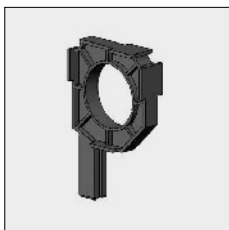
4470 022-068 Couple bearing ScreenExcellent with cross joint (max. 450, not stainless steel) and alu roller bungs 48/50

4470 024-068 Idem, with alu roller bungs 63

If there are more screens in one cover with individual operation. Please apply the double spindle below:



4452 188-000 Double spindle 12 mm for centre bracket



4452 128-000 Nylon centre slide bearing for Screen 85, spindle hole 51 mm

4452 129-000 Idem, spindle hole 65 mm (steel 63 mm)

Further requirements:

- Rollers refer to chapter 1
- Side guides refer to chapter 6G
- Bottom rails refer to chapter 6H
- Profiles for blackout screens refer to chapter 6I

= Article will be sold out. Special orders remain possible.