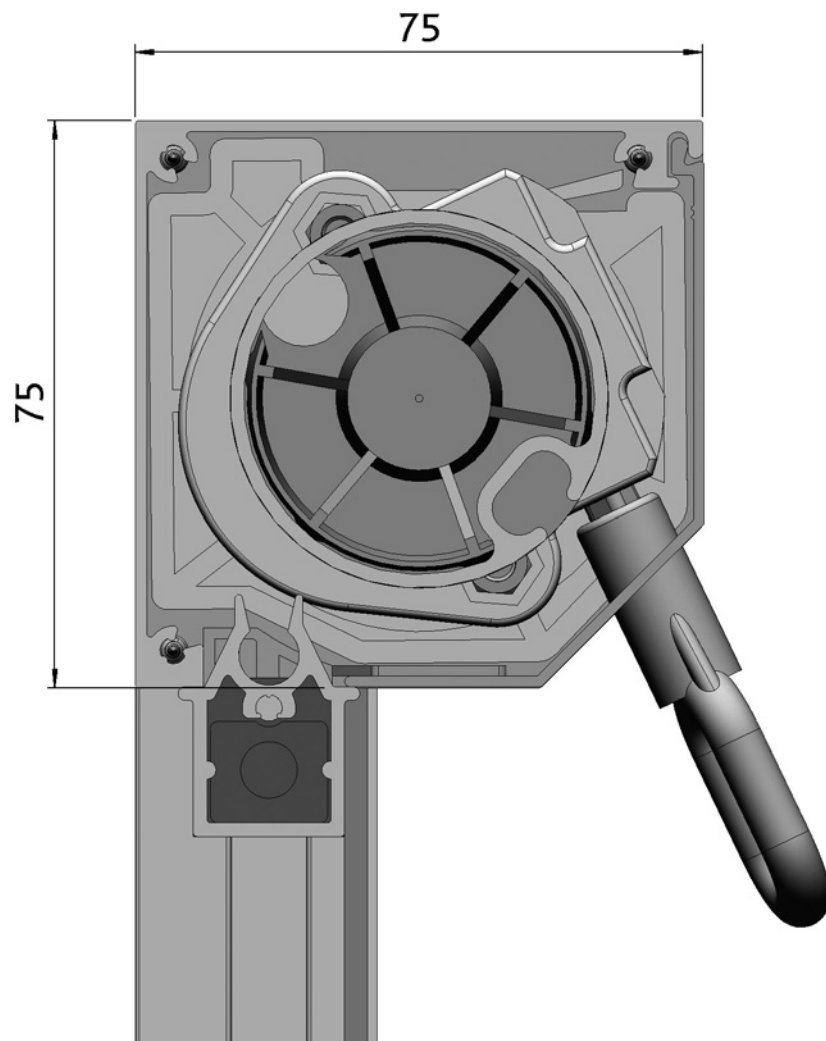
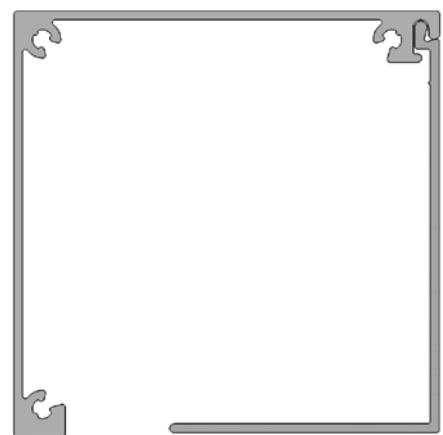
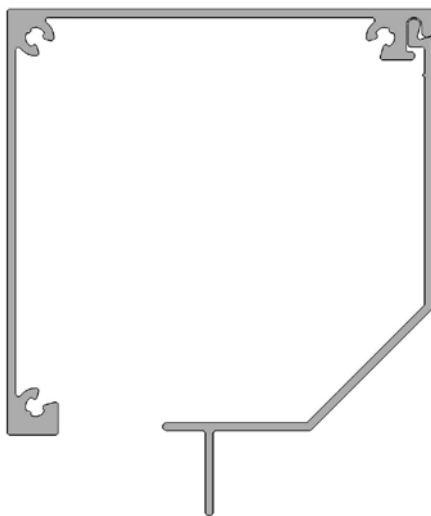


Screen 75 Excellent®

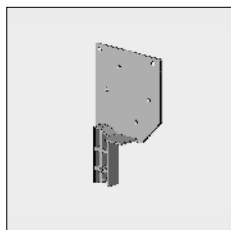


6

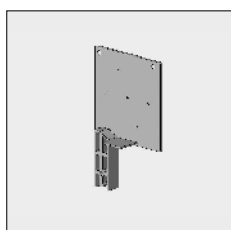


Part number	Description	Paint finish	Length in m ¹ Pack. Unit
-------------	-------------	--------------	--

End fix bracket slanted WITHOUT spindle:

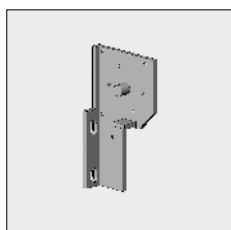


4452 365-000	End fix bracket Excellent 75 slanted without spindle, left	Mill finish	
4452 366-000	Idem, right	Mill finish	
4452 365-008	End fix bracket Excellent 75 slanted without spindle, left	RAL 7035 light grey	
4452 366-008	Idem, right	RAL 7035 light grey	
4452 365-006	End fix bracket Excellent 75 slanted without spindle, left	RAL 9010 pure white	
4452 366-006	Idem, right	RAL 9010 pure white	
4452 365-007 #	End fix bracket Excellent 75 slanted without spindle, left	RAL 8019 grey brown	
4452 366-007 #	Idem, right	RAL 8019 grey brown	
4452 365-901	End fix bracket Excellent 75 slanted without spindle, left	RAL 9001 cream	
4452 366-901	Idem, right	RAL 9001 cream	
4452 365-716	End fix bracket Excellent 75 slanted without spindle, left	RAL 7016 anthracite grey	
4452 366-716	Idem, right	RAL 7016 anthracite grey	



4452 404-000	End fix bracket Excellent 75 square without spindle, left	Mill finish	
4452 406-000	Idem, right	Mill finish	

Apply the end fix bracket model below only with snap-in side guide 30 x 20 mm 6296 688-... (refer to chapter 6G) or with steel wire guide 4452 038-068 and 4000 133-000 (refer to chapter 6G).



4452 300-000 #	Alu die cast end fix bracket for Excellent 75 standard slanted, with spindle 12, left	Mill finish	
4452 302-000 #	Idem, right	Mill finish	
4452 300-008 #	Alu die cast end fix bracket for Excellent 75 standard slanted, with spindle 12, left	RAL 7035 light grey	
4452 302-008 #	Idem, right	RAL 7035 light grey	
4452 300-006 #	Alu die cast end fix bracket for Excellent 75 standard slanted, with spindle 12, left	RAL 9010 pure white	
4452 302-006 #	Idem, right	RAL 9010 pure white	

= Article will be sold out. Special orders remain possible.

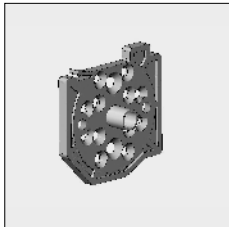
Part number	Description	Paint finish	Length in m ¹ Pack. Unit
-------------	-------------	--------------	--

Use the nylon fixing plates below in combination with the end fix brackets without spindle:

Motors and gear boxes can be directly fixed to the end plates.
There are no fixing holes needed in the end fix bracket.

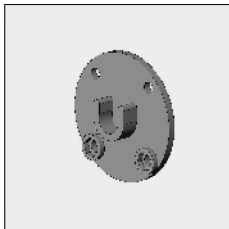
ATTENTION !!

On these fixing plates a patent number 1019354 has been granted.



4452 670-080	Nylon fixing plate 75 with spindle 12, left	Grey	25
4452 672-080	Idem, right	Black	25

4452 675-080	Nylon fixing plate 75 without spindle 12, left	Grey	25
4452 677-080	Idem, right	Black	25



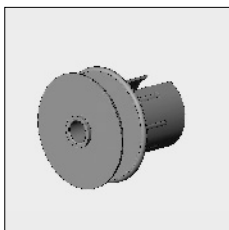
4452 231-080	Nylon bearing support for spindle 12 mm	Black	25
--------------	---	-------	----



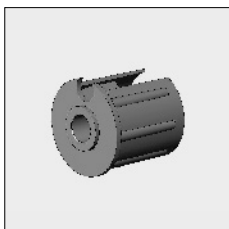
4000 156-000	Stainless steel screw with countersunk Philips head M5 x 10 mm (For fixing the bearing support)		100
--------------	--	--	-----



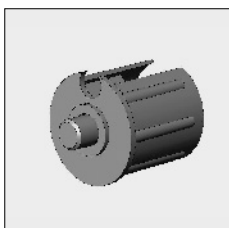
4452 017-000	Stainless steel nut M5 (For fixing the bearing support)		100
--------------	--	--	-----



4452 202-080	Nylon bearing roller bung 43 with pulley 65 mm, spindle hole 12 mm, flange 2 mm (for manual tape 14 mm)		25
4452 214-080	Nylon bearing roller bung 48 with pulley 70 mm, spindle hole 12 mm, flange 5 mm (for manual tape 14 mm)		25
4470 056-080	Idem, for manual tape 18 mm		25



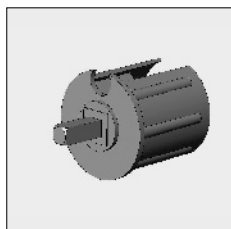
4452 200-080	Nylon bearing roller bung 43, spindle hole 12 mm, flange 2 mm		25
4452 210-080	Nylon bearing roller bung 48, spindle hole 12 mm, flange 2 mm		25
4470 058-068	Nylon bearing roller bung 48 with slide bearing		10



4452 201-080	Nylon bearing roller bung 43, spindle 12 mm, flange 2 mm		25
4452 211-080	Nylon bearing roller bung 48, spindle 12 mm, flange 2 mm		25

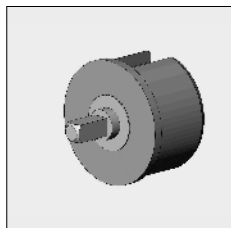
= Article will be sold out. Special orders remain possible.

Part number	Description	Paint finish	Length in m ¹ Pack. Unit
-------------	-------------	--------------	--

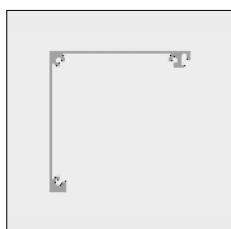


4470 065-080	Nylon mono plug 43, with square spindle 7 mm		25
4470 066-080	Nylon mono plug 48, with square spindle 7 mm		25
4470 061-000	Alu mono plug 48, with square spindle 7 mm		

To prevent screens from becoming erroneously reversed, use the free running mono plug below, in combination with gear boxes without end limiter:



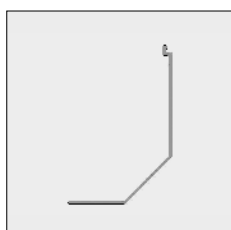
4470 072-000	Nylon mono plug 48, with free running square spindle 7 mm, left		
4470 074-000	Idem, right		



6296 691-000	Alu top cover Excellent 75	Mill finish	7.0
6296 692-000	Idem	Mill finish	7.5
6296 691-016	Alu top cover Excellent 75	Silver anodized	7.0
6296 691-006	Alu top cover Excellent 75	RAL 9010 pure white	7.0
6296 692-006 #	Idem	RAL 9010 pure white	7.5
6296 691-901	Alu top cover Excellent 75	RAL 9001 cream	7.0
6296 692-901 #	Idem	RAL 9001 cream	7.5
6296 691-716	Alu top cover Excellent 75	RAL 7016 anthracite grey	7.0



4452 083-000	Plate screw with countersunk Philips head 3.5 x 16 mm (For fixing the top cover to the end fix bracket)		100
--------------	--	--	-----

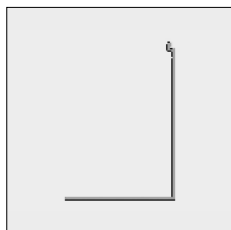
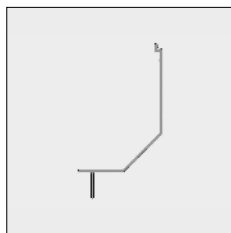


6296 742-000	Alu bottom cover slanted Excellent 75	Mill finish	7.0
6296 744-000	Idem	Mill finish	7.5
6296 742-016	Alu bottom cover slanted Excellent 75	Silver anodized	7.0
6296 742-006	Alu bottom cover slanted Excellent 75	RAL 9010 pure white	7.0
6296 744-006 #	Idem	RAL 9010 pure white	7.5
6296 742-901	Alu bottom cover slanted Excellent 75	RAL 9001 cream	7.0
6296 744-901 #	Idem	RAL 9001 cream	7.5

= Article will be sold out. Special orders remain possible.

Excellent® 75

Part number	Description	Paint finish	Length in m ¹ Pack. Unit
6296 695-000	Alu bottom cover slanted with lip Excellent 75	Mill finish	7.0
6296 695-016	Idem	Silver anodized	7.0
6296 695-006	Idem	RAL 9010 pure white	7.0
6296 695-901	Idem	RAL 9001 cream	7.0
6296 695-716	Idem	RAL 7016 anthracite grey	7.0



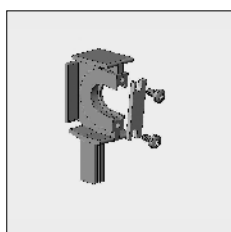
6296 873-000	Alu bottom cover square Excellent 75	Mill finish	7.5
--------------	--------------------------------------	-------------	-----



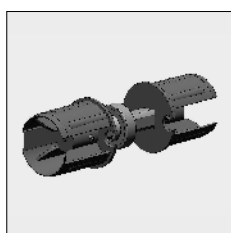
4452 084-000	Plate screw with Philips cylinder head 3,5 x 6,5 mm (For fixing the bottom cover to the end fix bracket)		100
--------------	---	--	-----



4452 097-000	Stainless steel (AISI410) drill screw ZB,BK/KK 3,5 x 9,5 mm (For fixing the bottom cover to the end fix bracket, drilling is not necessary)		100
--------------	--	--	-----

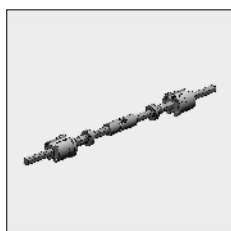


4452 114-068	Alu centre bracket Excellent 75		
--------------	---------------------------------	--	--



4452 182-068	Couple bearing for ScreenExcellent with nylon roller bungs 48/50.		
4469 055-068	Idem, with alu extruded roller bungs 48/50		

Note: With nylon couple bearing, couple max. 1x!

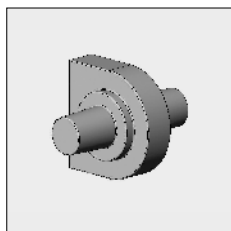


4470 022-068	Couple bearing for ScreenExcellent with cross joint (max. 450, not stainless steel) and alu roller bungs 48/50		
--------------	---	--	--

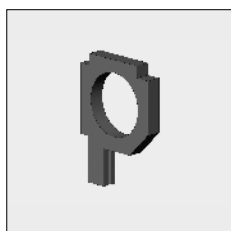
**If there are more screens in one cover with individual operation.
Please apply the double spindle below:**

= Article will be sold out. Special orders remain possible.

Part number	Description	Paint finish	Length in m ¹ Pack. Unit
-------------	-------------	--------------	--



4452 188-000	Double spindle 12 mm for centre bracket		
--------------	---	--	--



4452 125-000	Nylon centre slide bearing for Screen 75, spindle hole 50 mm		
--------------	--	--	--

4452 650-068	Idem, spindle hole 51mm (electro roller 51 mm)		
--------------	--	--	--

Further requirements:

- Rollers refer to chapter 1
- Side guides refer to chapter 6G
- Bottom rails refer to chapter 6H
- Profiles for blackout screens refer to chapter 6I