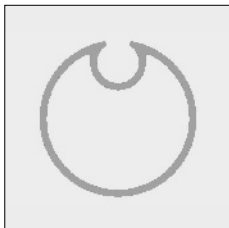


Part number	Description	Paint finish	Length in m <sup>1</sup> Pack. Unit
4452 600-000	Alu die cast end fix bracket Excellent 65 slanted, with spindle, left	Mill finish	
4452 602-000	Idem, right	Mill finish	
4452 600-008	Alu die cast end fix bracket Excellent 65 slanted, with spindle, left	RAL 7035 light grey	
4452 602-008	Idem, right	RAL 7035 light grey	
4452 600-006	Alu die cast end fix bracket Excellent 65 slanted, with spindle, left	RAL 9010 pure white	
4452 602-006	Idem, right	RAL 9010 pure white	
4452 606-000	# Alu die cast end fix bracket Excellent 65 slanted, without spindle, right	Mill finish	
6297 632-000	Alu top cover Excellent 65	Mill finish	6.0
6297 632-016	Idem	Silver anodized	6.0
6297 632-006	Idem	RAL 9010 pure white	6.0
4452 083-000	Plate screw with countersunk Philips head 3.5 x 16 mm (For fixing the top cover to the end fix bracket)		100
6297 642-000	Alu bottom cover Excellent 65 slanted	Mill finish	6.0
6297 642-016	Idem	Silver anodized	6.0
6297 642-006	Idem	RAL 9010 pure white	6.0
4452 084-000	Stainless steel plate screw with Philips cylinder head 3.5 x 6.5 mm (For fixing the bottom cover to the end fix bracket)		100
4452 097-000	Stainless steel (AISI410) drilling screw ZB.BK/KK 3.5 x 9.5 mm (For fixing the bottom cover to the end fix bracket, drilling is not necessary)		100

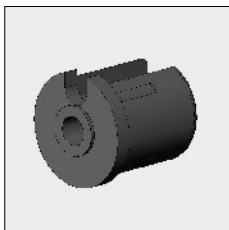
# = Article will be sold out. Special orders remain possible.

# Excellent® 65

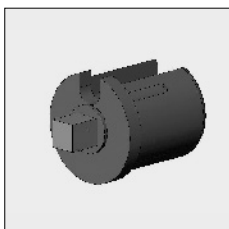
Part number	Description	Paint finish	Length in m <sup>1</sup> Pack. Unit
-------------	-------------	--------------	--



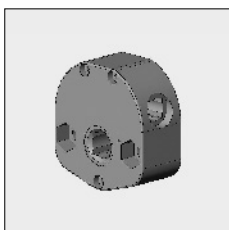
6297 620-000	Alu roller 28 mm	Mill finish	6.0
6297 620-016	Idem	Silver anodized	6.0



4452 226-000	Nylon bearing roller bung 28 mm, spindle hole 7 mm		
--------------	--	--	--

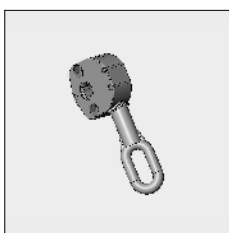


4470 068-000	Nylon mono plug 28 mm, with square spindle 7 mm		
--------------	---	--	--



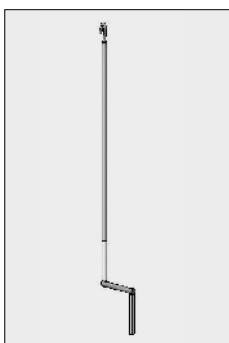
4452 099-000	Gear box without eye 1:3, without end limiter, with square spindle hole 7 mm		
--------------	--	--	--

**For gear box 4452 099-000 apply the crank handle with square spindle VK 6 mm:**



4452 104-068	Gear box 1:3, without end limiter, with square spindle hole 7 mm		
--------------	--	--	--

**This gear box is fitted with a special small eye, only applicable for the following crank handles:**

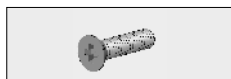


4000 620-068	Crank handle Ø 13 mm for outside operation, with hook and foldable handle, length 140 cm	Silver anodized	
4000 622-068	Idem, 160 cm	Silver anodized	
4000 624-068	Idem, 180 cm	Silver anodized	

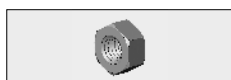
# = Article will be sold out. Special orders remain possible.

Part number	Description	Paint finish	Length in m <sup>1</sup> Pack. Unit
-------------	-------------	--------------	--

**Fixing material for the gear boxes:**



4452 023-000	Stainless steel screw with countersunk Philips head M5 x 20 mm		50
--------------	--	--	----



4452 020-000	Stainless steel nut M 5		50
--------------	-------------------------	--	----

# = Article will be sold out. Special orders remain possible.