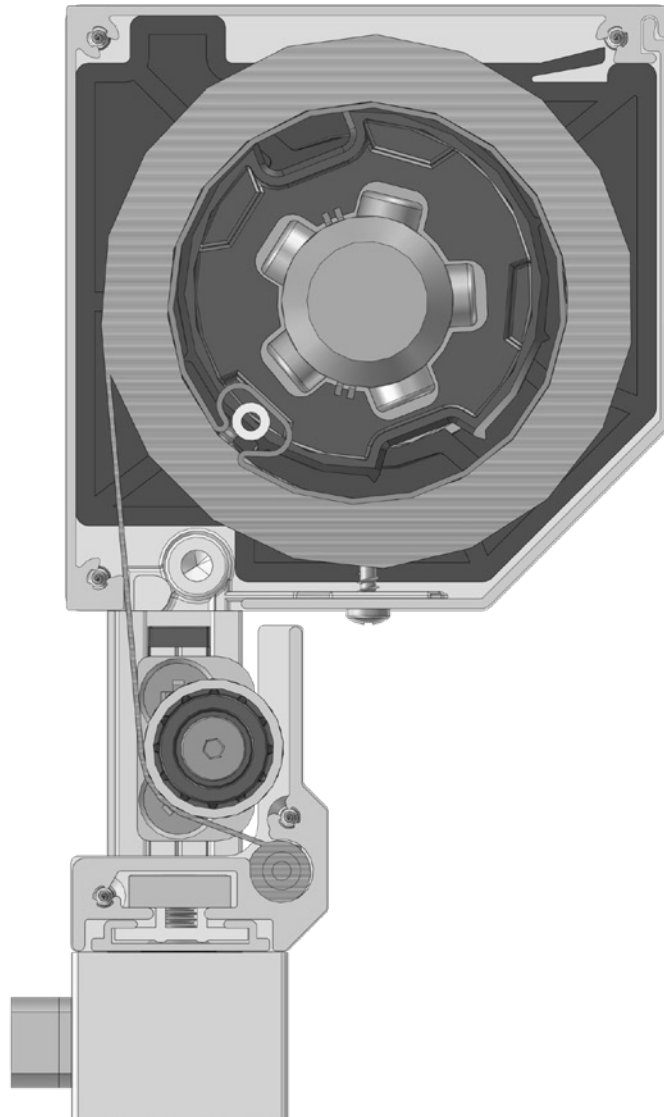




5



5

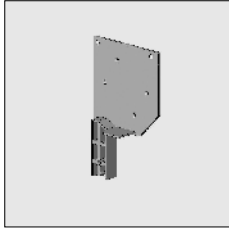


Part number	Description	Paint finish	Length in m <sup>1</sup> Pack. Unit
-------------	-------------	--------------	----------------------------------------

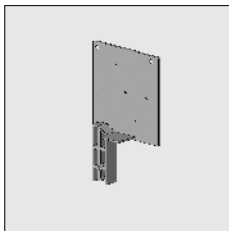
Apply the droparmscreen only in combination with Headboxes 75, 85 und 95.  
(ATTENTION !! Only applicable with bottom cover without lip).

## Headbox 75

### End fix bracket slanted WITHOUT spindle:



4452 365-000	End fix bracket Excellent 75 slanted without spindle, left	Mill finish	
4452 366-000	Idem, right	Mill finish	
4452 365-008	End fix bracket Excellent 75 slanted without spindle, left	RAL 7035 light grey	
4452 366-008	Idem, right	RAL 7035 light grey	
4452 365-006	End fix bracket Excellent 75 slanted without spindle, left	RAL 9010 pure white	
4452 366-006	Idem, right	RAL 9010 pure white	
4452 365-901	End fix bracket Excellent 75 slanted without spindle, left	RAL 9001 cream	
4452 366-901	Idem, right	RAL 9001 cream	



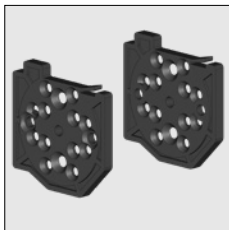
4452 404-000	End fix bracket Excellent 75 square without spindle, left	Mill finish	
4452 406-000	Idem, right	Mill finish	

### Use the nylon fixing plates below in combination with the end fix brackets without spindle:

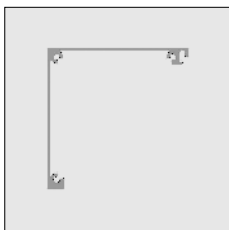
Motors and gear boxes can be directly fixed to the end plates.  
There are no fixing holes needed in the end fix bracket.

#### ATTENTION !!

On these fixing plates a patent number 1019354 has been granted.



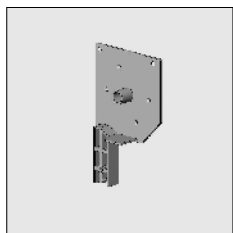
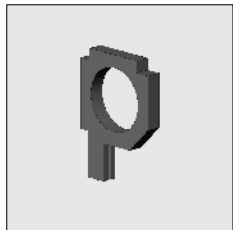
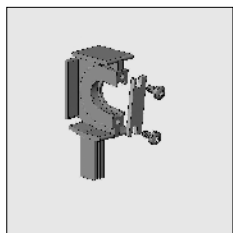
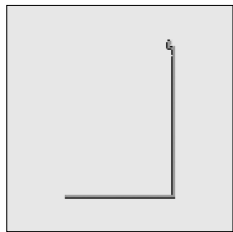
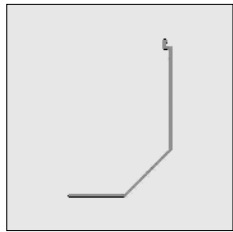
4452 675-080	Nylon fixing plate 75 with spindle 12, left	Grey	25
4452 677-080	Idem, right	Black	25



6296 691-000	Alu top cover Excellent 75	Mill finish	7.0
6296 692-000	Idem	Mill finish	7.5
6296 691-016	Alu top cover Excellent 75	Silver anodized	7.0
6296 691-006	Alu top cover Excellent 75	RAL 9010 pure white	7.0
6296 692-006	Idem	RAL 9010 pure white	7.5
6296 691-901	Alu top cover Excellent 75	RAL 9001 cream	7.0
6296 692-901	Idem	RAL 9001 cream	7.5

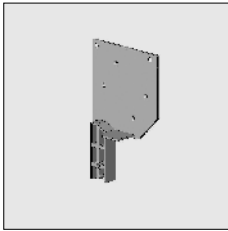
# Markisolette Excellent®

Part number	Description	Paint finish	Length in m <sup>1</sup> Pack. Unit
6296 742-000	Alu bottom cover slanted Excellent 75	Mill finish	7.0
6296 744-000	Idem	Mill finish	7.5
6296 742-016	Alu bottom cover slanted Excellent 75	Silver anodized	7.0
6296 742-006	Alu bottom cover slanted Excellent 75	RAL 9010 pure white	7.0
6296 744-006	Idem	RAL 9010 pure white	7.5
6296 742-901	Alu bottom cover slanted Excellent 75	RAL 9001 cream	7.0
6296 744-901	Idem	RAL 9001 cream	7.5
6296 873-000	Alu bottom cover square Excellent 75	Mill finish	7.5
6296 873-016	Idem	Silver anodized	7.5
4452 114-068	Alu centre bracket Excellent 75		
4452 125-000	Nylon centre slide bearing for Screen 75, spindle hole 50 mm		
4452 650-068	Idem, spindle hole 51 mm (electro roller 51 mm)		
<b>Headbox 85</b>			
<b>End fix brackets slanted WITH spindle 12:</b>			
4452 180-000	End fix bracket Excellent 85, left	Mill finish	
4452 181-000	Idem, right	Mill finish	
4452 180-008	End fix bracket Excellent 85, left	RAL 7035 light grey	
4452 181-008	Idem, right	RAL 7035 light grey	
4452 180-006	End fix bracket Excellent 85, left	RAL 9010 pure white	
4452 181-006	Idem, right	RAL 9010 pure white	
4452 180-901	End fix bracket Excellent 85, left	RAL 9001 cream	
4452 181-901	Idem, right	RAL 9001 cream	

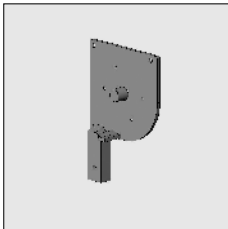


Part number	Description	Paint finish	Length in m <sup>1</sup> Pack. Unit
-------------	-------------	--------------	----------------------------------------

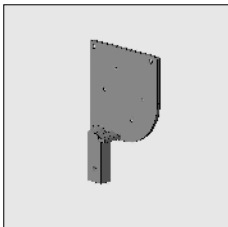
**End fix brackets slanted WITHOUT spindle:**



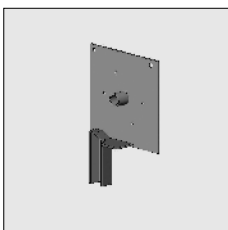
4452 185-000	End fix bracket Excellent 85, left	Mill finish	
4452 186-000	Idem, right	Mill finish	
4452 185-008	End fix bracket Excellent 85, left	RAL 7035 light grey	
4452 186-008	Idem, right	RAL 7035 light grey	
4452 185-006	End fix bracket Excellent 85, left	RAL 9010 pure white	
4452 186-006	Idem, right	RAL 9010 pure white	
4452 185-901	End fix bracket Excellent 85, left	RAL 9001 cream	
4452 186-901	Idem, right	RAL 9001 cream	



4452 510-000	Alu die cast end fix bracket Excellent 85 rounded, with spindle 12, left	Mill finish	
4452 512-000	Idem, right	Mill finish	
4452 510-008	Alu die cast end fix bracket Excellent 85 rounded, with spindle 12, left	RAL 7035 light grey	
4452 512-008	Idem, right	RAL 7035 light grey	
4452 510-901	Alu die cast end fix bracket Excellent 85 rounded, with spindle 12, left	RAL 9001 cream	
4452 512-901	Idem, right	RAL 9001 cream	



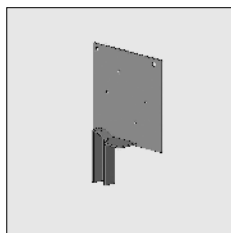
4452 514-000	Alu die cast end fix bracket Excellent 85 rounded, without spindle 12, left	Mill finish	
4452 516-000	Idem, right	Mill finish	



4453 110-000	Alu end fix bracket Excellent 85 square with spindle 12, left	Mill finish	
4453 112-000	Idem, right	Mill finish	
4453 110-008	Alu end fix bracket Excellent 85 square with spindle 12, left	RAL 7035 light grey	
4453 112-008	Idem, right	RAL 7035 light grey	
4453 110-006	Alu end fix bracket Excellent 85 square with spindle 12, left	RAL 9010 pure white	
4453 112-006	Idem, right	RAL 9010 pure white	

# Markisolette Excellent®

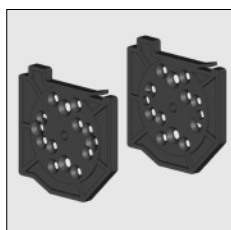
Part number	Description	Paint finish	Length in m <sup>1</sup> Pack. Unit
4453 114-000	Alu end fix bracket Excellent 85 square without spindle, left	Mill finish	
4453 116-000	Idem, right	Mill finish	
4452 414-008	Alu end fix bracket Excellent 85 square without spindle, left	RAL 7035 light grey	
4452 416-008	Idem, right	RAL 7035 light grey	
4452 414-006	Alu end fix bracket Excellent 85 square without spindle, left	RAL 9010 pure white	
4452 416-006	Idem, right	RAL 9010 pure white	



### ATTENTION !!

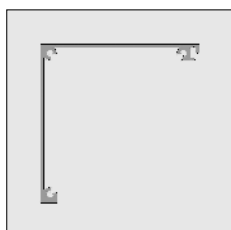
On these fixing plates a patent number 1019354 has been granted.

4452 685-080	Nylon fixing plate 85 with spindle 12, left	Light grey	25
4452 687-080	Idem, right	Black	25

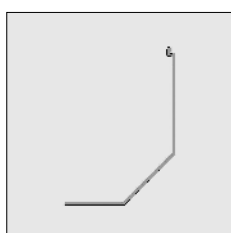


5

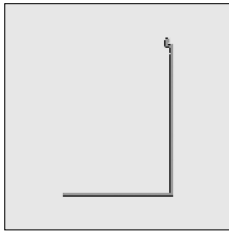
6296 756-000	Alu top cover Excellent 85	Mill finish	7.0
6296 758-000	Idem	Mill finish	7.5
6296 756-016	Alu top cover Excellent 85	Silver anodized	7.0
6296 758-016	Idem	Silver anodized	7.5
6296 756-006	Alu top cover Excellent 85	RAL 9010 pure white	7.0
6296 758-006	Idem	RAL 9010 pure white	7.5
6296 756-901	Alu top cover Excellent 85	RAL 9001 cream	7.0
6296 758-901	Idem	RAL 9001 cream	7.5



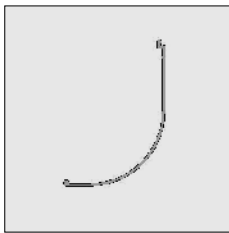
6296 748-000	Alu bottom cover slanted Excellent 85	Mill finish	7.0
6296 749-000	Idem	Mill finish	7.5
6296 748-016	Alu bottom cover slanted Excellent 85	Silver anodized	7.0
6296 749-016	Idem	Silver anodized	7.5
6296 748-006	Alu bottom cover slanted Excellent 85	RAL 9010 pure white	7.0
6296 749-006	Idem	RAL 9010 pure white	7.5
6296 748-901	Alu bottom cover slanted Excellent 85	RAL 9001 cream	7.0
6296 749-901	Idem	RAL 9001 cream	7.5



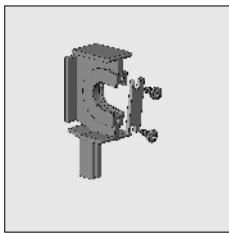
Part number	Description	Paint finish	Length in m <sup>1</sup> Pack. Unit
6296 875-000	Alu bottom cover square Excellent 85	Mill finish	7.0
6296 878-000	Idem	Mill finish	7.5
6296 875-016	Alu bottom cover square Excellent 85	Silver anodized	7.0
6296 878-016	Idem	Silver anodized	7.5
6296 875-006	Alu bottom cover square Excellent 85	RAL 9010 pure white	7.0
6296 878-006	Idem	RAL 9010 pure white	7.5



6296 650-000	Alu bottom cover rounded Excellent 85	Mill finish	7.0
6296 650-016	Idem	Silver anodized	7.0
6297 650-901	Idem	RAL 9001 cream	7.0



4452 115-068	Alu centre bracket Excellent 85		
--------------	---------------------------------	--	--



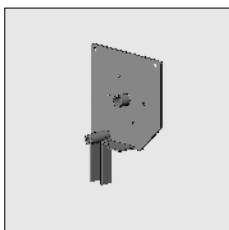
4452 128-000	Nylon centre slide bearing for Excellent 85, spindle hole 51 mm		
4452 129-000	Idem, spindle hole 65 mm (steel 63 mm)		



## Headbox 95

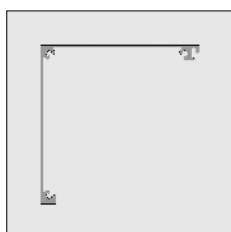
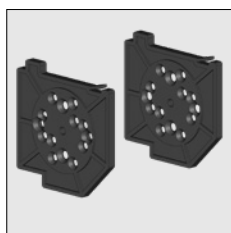
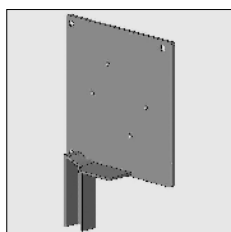
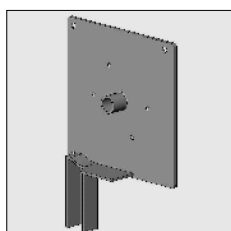
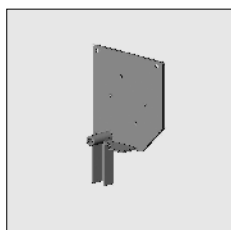
### End fix bracket slanted WITH spindle 12:

4452 380-000	End fix bracket Excellent 95 slanted with spindle 12, left	Mill finish	
4452 381-000	Idem, right	Mill finish	
4452 380-008	End fix bracket Excellent 95 slanted with spindle 12, left	RAL 7035 light grey	
4452 381-008	Idem, right	RAL 7035 light grey	
4452 380-006	End fix bracket Excellent 95 slanted with spindle 12, left	RAL 9010 pure white	
4452 381-006	Idem, right	RAL 9010 pure white	
4452 380-901	End fix bracket Excellent 95 slanted with spindle 12, left	RAL 9001 cream	
4452 381-901	Idem, right	RAL 9001 cream	



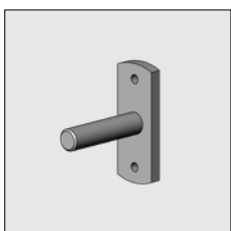
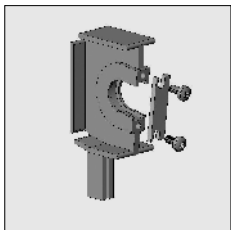
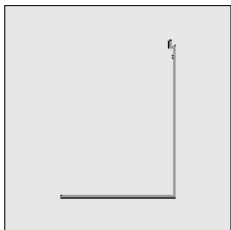
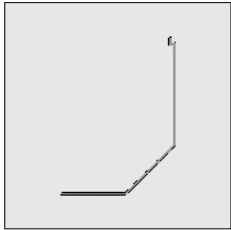
# Markisolette Excellent®

Part number	Description	Paint finish	Length in m <sup>1</sup> Pack. Unit
<b>End fix bracket slanted WITHOUT spindle:</b>			
4453 000-000	End fix bracket Excellent 95 slanted without spindle, left	Mill finish	
4453 002-000	Idem, right	Mill finish	
4453 000-008	End fix bracket Excellent 95 slanted without spindle, left	RAL 7035 light grey	
4453 002-008	Idem, right	RAL 7035 light grey	
4453 000-006	End fix bracket Excellent 95 slanted without spindle, left	RAL 9010 pure white	
4453 002-006	Idem, right	RAL 9010 pure white	
4453 000-901	End fix bracket Excellent 95 slanted without spindle, left	RAL 9001 cream	
4453 002-901	Idem, right	RAL 9001 cream	
4453 120-000	End fix bracket Excellent 95 square with spindle 12, left	Mill finish	
4453 122-000	Idem, right	Mill finish	
4453 120-008	End fix bracket Excellent 95 square with spindle 12, left	RAL 7035 light grey	
4453 122-008	Idem, right	RAL 7035 light grey	
4453 120-006	End fix bracket Excellent 95 square with spindle 12, left	RAL 9010 pure white	
4453 122-006	Idem, right	RAL 9010 pure white	
4453 124-000	End fix bracket Excellent 95 square without spindle, left	Mill finish	
4453 126-000	Idem, right	Mill finish	
4453 124-008	End fix bracket Excellent 95 square without spindle, left	RAL 7035 light grey	
4453 126-008	Idem, right	RAL 7035 light grey	
4452 695-080	Nylon fixing plate 95 with spindle 12, left	Light grey	25
4452 697-080	Idem, right	Black	25
6296 770-000	Alu top cover Excellent 95	Mill finish	7.0
6296 772-000	Idem	Mill finish	7.5
6296 770-016	Alu top cover Excellent 95	Silver anodized	7.0
6296 772-016	Idem	Silver anodized	7.5
6296 770-006	Alu top cover Excellent 95	RAL 9010 pure white	7.0
6296 772-006	Idem	RAL 9010 pure white	7.5



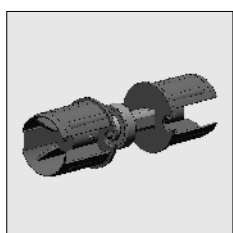
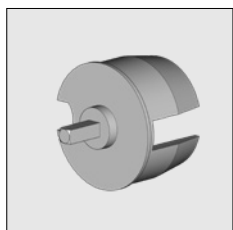
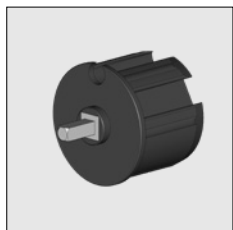
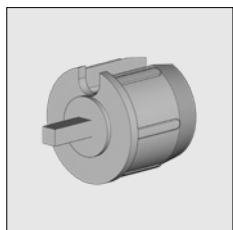
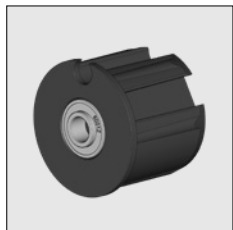
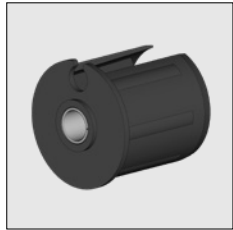


Part number	Description	Paint finish	Length in m <sup>1</sup> Pack. Unit
6296 770-901	Alu top cover Excellent 95	RAL 9001 cream	7.0
6296 772-901	Idem	RAL 9001 cream	7.5
6296 890-000	Alu bottom cover slanted Excellent 95	Mill finish	7.0
6296 891-000	Idem	Mill finish	7.5
6296 764-016	Alu bottom cover slanted Excellent 95	Silver anodized	7.0
6296 891-016	Idem	Silver anodized	7.5
6296 890-006	Alu bottom cover slanted Excellent 95	RAL 9010 pure white	7.0
6296 891-006	Idem	RAL 9010 pure white	7.5
6296 890-901	Alu bottom cover slanted Excellent 95	RAL 9001 cream	7.0
6296 891-901	Idem	RAL 9001 cream	7.5
6297 382-000	Alu bottom cover square Excellent 95	Mill finish	7.5
6297 382-016	Idem	Silver anodized	7.5
6297 382-006	Idem	RAL 9010 pure white	7.5
4452 116-068	Alu centre bracket Excellent 95		
4452 127-000	Nylon centre slide bearing for Excellent 95, spindle hole 65 mm		
<b>For Excellent 75 - 85 and 95</b>			
4210 498-080	Bearing pin 12 mm with fixing plate	Zinc-plated	10
4210 484-000	Stainless steel screw M6 x 10 mm with countersunk Philips head (For fixing the bearing pin to the fixing plate)		100

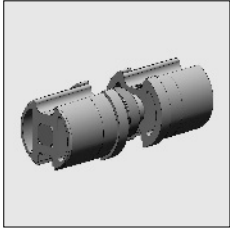


# Markisolette Excellent®

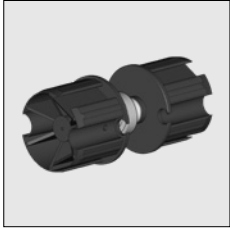
Part number	Description	Paint finish	Length in m <sup>1</sup> Pack. Unit
4470 058-068	Nylon bearing roller bung 48, with slide bearing		10
4210 497-000	Nylon Washer 20 x 12 x 2 mm In combination with bearing roller bung 4470058-068		50
4452 225-068	Nylon bearing roller bung 63 (Incl. increased inner ring)		10
4470 061-000	Alu-Mono plug 48, with square Spindle 7 mm		
4470 071-080	Nylon Mono plug 63, with square Spindle 7 mm		25
4470 067-000	Alu-Mono plug 63, with square Spindle 7 mm		
4452 182-068	Couple bearing for screen Excellent with nylon bearing roller bung 48/50		



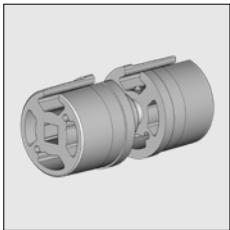
Part number	Description	Paint finish	Length in m <sup>1</sup> Pack. Unit
-------------	-------------	--------------	----------------------------------------



4469 055-068	Idem, with alu Extrusion bearing roller bung 48/50		100
--------------	----------------------------------------------------	--	-----

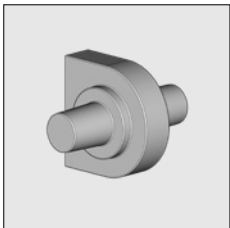


4452 184-068	Couple bearing for screen Excellent with nylon bearing roller bung 63/65		10
--------------	--------------------------------------------------------------------------	--	----

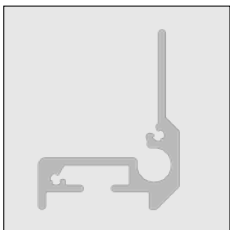


4469 065-068	Idem, with alu Extrusion bearing roller bung 63		50
--------------	-------------------------------------------------	--	----

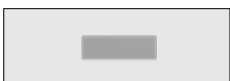
**Note: With nylon couple bearing, couple max. 1x!  
If there are more screens in one cover with individually operation.  
Please apply the double spindle 4452 188-000.**



4452 188-000	Double spindle 12 mm for centre bracket		
--------------	-----------------------------------------	--	--



6297 340-000	Alu front profile	Mill finish	6.0
6297 340-016	Idem	Silver anodized	6.0
6297 340-006	Idem	RAL 9010 pure white	6.0
6297 340-901	Idem	RAL 9001 cream	6.0


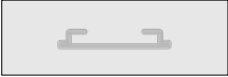
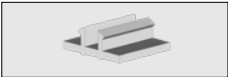
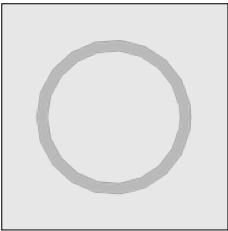
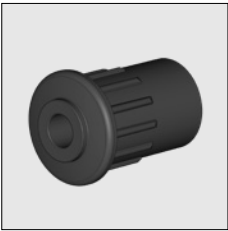








6253 072-000	Steel reinforcement strip 16 x 5 mm for front profile	Zinc-plated	3.0
--------------	-------------------------------------------------------	-------------	-----



4453 362-000	Alu end cap for front profile	Mill finish	
4453 362-001	Idem	Silver anodized	
4453 362-006	Idem	RAL 9010 pure white	
4453 362-901	Idem	RAL 9001 cream	

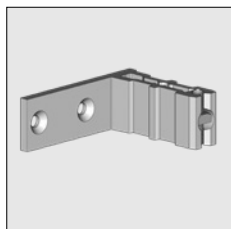
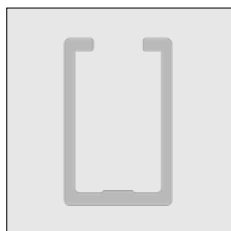
# Markisolette Excellent®

	Part number	Description	Paint finish	Length in m <sup>1</sup> Pack. Unit
	4452 083-000	Plate screw countersunk Philips head 3,5 x 16 mm (To fasten the end cap to the front profile)		100
	6297 446-000	Alu cover profile for front profile	Mill finish	7.5
	6297 446-016	Idem	Silver anodized	7.5
	6297 446-006	Idem	RAL 9010 pure white	7.5
	6297 446-901	Idem	RAL 9001 cream	7.5
	4410 430-080	Nylon snap block for cover profile	Transparent	100
	6297 336-000	Alu support roller 19 x 22 mm	Mill finish	6.0
	6297 336-016	Idem	Silver anodized	6.0
	6297 336-006	Idem	RAL 9010 pure white	6.0
	6297 336-901	Idem	RAL 9001 cream	6.0
	4453 330-905	Nylon bearing roller bung for support roller	Black	
	4453 365-001	Alu fastening block for support roller	Silver anodized	
	4453 348-000	Stainless steel set M5 screw 6 X 12 mm (To fasten bearing roller bung support roller to the fastening block)		
	4000 155-000	Plate screw countersunk Philips head M6 x 22 mm (To fasten the fastening block to the guiding profile)		100
	4000 387-000	Lock nut M 6 (To fasten the fastening block to the guiding profile)		100
	4453 335-905	Nylon end cap for guiding profile (Is placed between the support roller and under the hinge).	Black	
	4453 367-001	Alu guiding profile (for the projection of 50 cm) (provided with holes for fastening the support roller and the hinge piece)	Silver anodized	

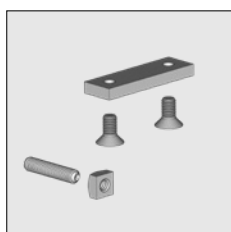
Part number	Description	Paint finish	Length in m <sup>1</sup> Pack. Unit
6297 320-016	Alu guiding profile In case one would like to a different projection than the standard projection of -50 cm. On demand we can also make it in a different length including mounting holes.	Silver anodized	6.0
4453 340-000	Alu hinge piece, left	Mill finish	
4453 342-000	Idem, right	Mill finish	
4453 340-008	Alu hinge piece, left	RAL 7035 light grey	
4453 342-008	Idem, right	RAL 7035 light grey	
4453 340-006	Alu hinge piece, left	RAL 9010 pure white	
4453 342-006	Idem, right	RAL 9010 pure white	
4453 340-901	Alu hinge piece, left	RAL 9001 cream	
4453 342-901	Idem, right	RAL 9001 cream	
4453 350-000	Stainless steel set M6 screw 8 X 30 mm (To fasten the hinge piece to the guiding profile)		
4210 499-080	Nylon washer 8.1 x 14 x 1 mm for set screw 4453 350-000 (2 x per screw) These washer is also in wholesale packages available (500 pieces) Article no. 4210 499-000.		50
4453 355-000	Projection spring, left		
4453 357-000	Idem, right		
4453 366-905	Nylon filling roll for projection spring/hinge piece	Black	
4453 750-000	Stopper for projection spring (Will be mounted to the guiding profile)		
4000 387-000	Lock nut M6 (To fasten the hinge piece with projection spring to the guiding profile and to fasten the stopper with projection spring to the guiding profile)		100
4410 239-000	Socket-head bolt M6 x 25 mm (To fasten the hinge piece to the projection spring)		100
4212 248-000	Square nut M6 (To fasten the hinge piece to the projection spring)		200

# Markisolette Excellent®

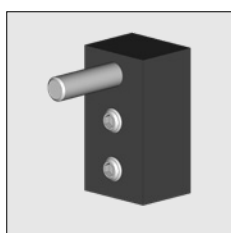
Part number	Description	Paint finish	Length in m <sup>1</sup> Pack. Unit
6296 338-000	Alu droparm projection profile	Mill finish	7.0
6296 340-000	Idem	Mill finish	7.5
6296 338-016	Alu droparm projection profile	Silver anodized	7.0
6296 340-016	Idem	Silver anodized	7.5
6296 338-006	Alu droparm projection profile	RAL 9010 pure white	7.0
6296 340-006	Idem	RAL 9010 pure white	7.5
6296 338-901	Alu droparm projection profile	RAL 9001 cream	7.0
6296 340-901	Idem	RAL 9001 cream	7.5



4410 471-090	Alu top piece	Mill finish	
4410 471-001	Idem	Silver anodized	
4410 471-006	Idem	RAL 9010 pure white	
4410 471-901	Idem	RAL 9001 cream	

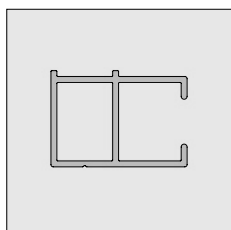


4410 483-068	Fastening kit for top piece		10
--------------	-----------------------------	--	----



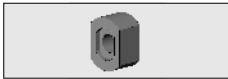
4453 327-068	Nylon locking block for the screen guiding profile. Allows you to determine the projection of the screen. The pin falls in the recess of the hinge and blocks the screen when it is projecting.		
--------------	-------------------------------------------------------------------------------------------------------------------------------------------------------------------------------------------------------	--	--

### For FACE fitting:

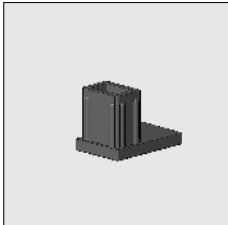


6296 658-000	Alu side guide "HTF" 20 x 28.5 mm	Mill finish	7.0
6296 658-016	Idem	Silver anodized	7.0
6296 658-006	Idem	RAL 9010 pure white	7.0
6296 658-901	Idem	RAL 9001 cream	7.0

Part number	Description	Paint finish	Length in m <sup>1</sup> Pack. Unit
-------------	-------------	--------------	----------------------------------------

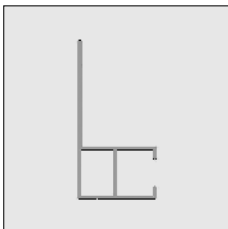


4452 295-000	Nylon adapter block (snap-in)	Light grey	100
4452 296-000	Idem	Pure white	100
4452 297-000	Idem	Cream	100
4452 299-000	Idem	Black	100

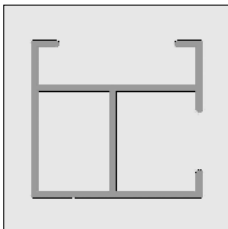


4452 260-080	Nylon sealing cap for side guides HTF, LHFT and "click", with or without lip	Light grey	100
4452 262-080	Idem	Pure white	100
4452 264-080	Idem	Black	100

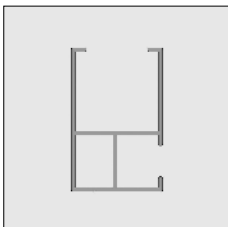
**For RECESS fitting:**



6296 792-000	Alu side guide "LHFT" 60 x 30 mm	Mill finish	7.0
6296 792-016	Idem	Silver anodized	7.0
6296 792-006	Idem	RAL 9010 pure white	7.0
6296 792-007	Idem	RAL 8019 brown	7.0
6296 792-901	Idem	RAL 9001 cream	7.0
6296 792-716	Idem	RAL 7016 anthracite	7.0



6296 667-000	Alu snap-in side guide 27.6 x 30 mm	Mill finish	7.0
6296 668-000	Idem	Mill finish	7.5
6296 667-016	Alu snap-in side guide 27.6 x 30 mm	Silver anodized	7.0
6296 668-016	Idem	Silver anodized	7.5
6296 667-006	Alu snap-in side guide 27.6 x 30 mm	RAL 9010 pure white	7.0
6296 668-006	Idem	RAL 9010 pure white	7.5
6296 667-901	Alu snap-in side guide 27.6 x 30 mm	RAL 9001 cream	7.0
6296 668-901	Idem	RAL 9001 cream	7.5



6296 660-000	Alu snap-in side guide 47.5 x 30 mm	Mill finish	7.5
6296 660-016	Idem	Silver anodized	7.5
6296 660-006	Idem	RAL 9010 pure white	7.5
6296 660-901	Idem	RAL 9001 cream	7.5

# Markisolette Excellent®

Part number	Description	Paint finish	Length in m <sup>1</sup> Pack. Unit
6296 852-000	Alu snap-in centre guide 27.6 x 45 mm	Mill finish	7.0
6296 854-000	Idem	Mill finish	7.5
6296 852-016	Alu snap-in centre guide 27.6 x 45 mm	Silver anodized	7.0
6296 854-016	Idem	Silver anodized	7.5
6296 852-006	Alu snap-in centre guide 27.6 x 45 mm	RAL 9010 pure white	7.0
6296 854-006	Idem	RAL 9010 pure white	7.5
6297 560-000	Alu filling profile for klick side guides	Mill finish	7.0
6297 560-016	Idem	Silver anodized	7.0
6297 560-006	Idem	RAL 9010 pure white	7.0
6297 560-901	Idem	RAL 9001 cream	7.0
6296 677-000	Alu centre guide 20 x 45 mm	Mill finish	7.0
6296 678-000	Idem	Mill finish	7.5
6296 678-016	Idem	Silver anodized	7.5
6296 678-006	Idem	RAL 9010 pure white	7.5
4452 270-080	Nylon sealing cap for centre guides	Black	100

**Further requirements:**  
- Rollers refer to chapter 1

