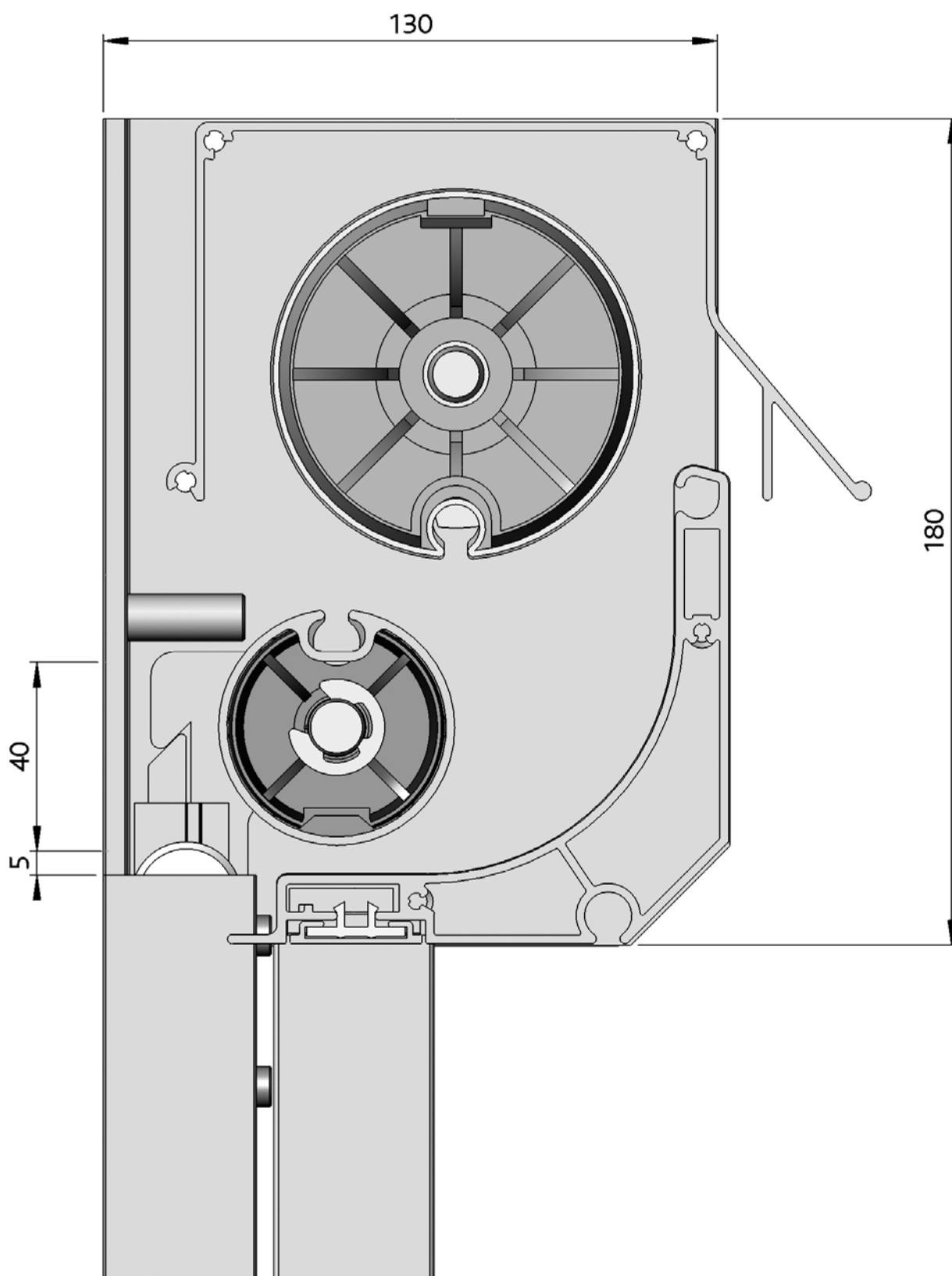


Markisolette Extra



5

Part number	Description	Paint finish	Length in m ¹ Pack. Unit
-------------	-------------	--------------	--

Particulars:

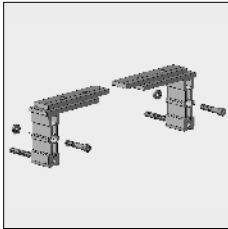
- Maximum width 400 cm
- Projection 80 cm.

ATTENTION !!

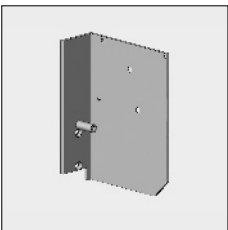
The drop arms 4410 700-... (refer to Markisolette Compact chapter 5A) are standard produced for the Markisolette Compact. To use these arms on the Markisolette Extra, the projection profile must be shortened to 680 mm.

The drop arms are placed in the recess of the end fix bracket.

Specific parts:



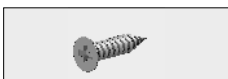
4410 649-068	Top piece kit for drop arm Markisolette Extra	Mill finish	
4410 649-001	Idem	Silver anodized	
4410 649-901	Idem	RAL 9001 cream	



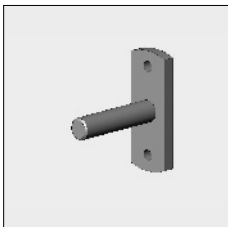
4410 644-001	Alu end fix bracket Markisolette Extra, left	Silver anodized	
4410 646-001	Idem, right	Silver anodized	
4410 644-901	Alu end fix bracket Markisolette Extra, left	RAL 9001 cream	
4410 646-901	Idem, right	RAL 9001 cream	

End fix brackets Markisolette Extra are also available in Mill finish. Order the next part numbers below:

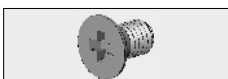
4410 644-068	End fix bracket left without tab	Mill finish	
4410 646-068	End fix bracket right without tab	Mill finish	
4452 783-000	Stainless steel tab		
4000 155-000	Stainless steel screw VK/KK DIN 965 M6 x 22 mm		



4210 140-000	Plate screw with countersunk Philips head 4.2 x 22 mm (For fixing the end fix bracket to the top cover)		100
--------------	--	--	-----



4210 498-080	Steel bearing pin 12 mm with mounting plate	Zinc-plated	10
--------------	---	-------------	----

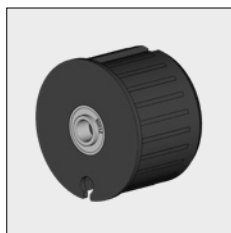


4210 484-000	Stainless steel screw with countersunk Philips head M6 x 10 mm (For fixing the bearing pin)		50
--------------	--	--	----

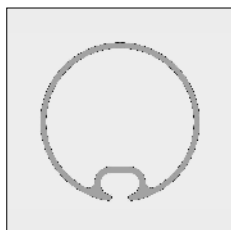
= Article will be sold out. Special orders remain possible.

Markisolette Extra

Part number	Description	Paint finish	Length in m ¹ Pack. Unit
-------------	-------------	--------------	--



4470 080-068	Nylon bearing roller bung 78 incl. bearing with increased inner ring	Grey	10
--------------	--	------	----

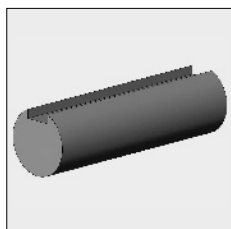


6296 252-000	Alu support roller (50 mm)	Mill finish	7.5
--------------	----------------------------	-------------	-----

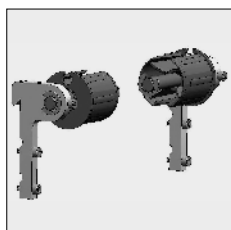
6296 251-016	Alu support roller (50 mm)	Silver anodized	7.0
--------------	----------------------------	-----------------	-----

6296 252-016	Idem	Silver anodized	7.5
--------------	------	-----------------	-----

6296 251-901	Alu support roller (50 mm)	RAL 9001 cream	7.0
--------------	----------------------------	----------------	-----

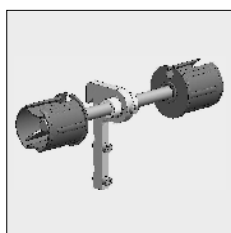


4452 784-000	Reinforcement for support roller (2 pieces per awning). Fix the reinforcement by drilling a little hole in the fabric groove and blocking the reinforcement using a fabric clamp pad (4000 165-000 and 4000 166-000, refer to chapter 1A)		
--------------	--	--	--



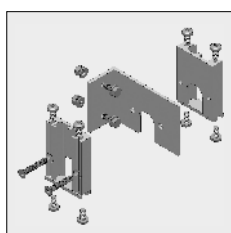
4410 647-068	Spare parts kit for support roller Markisolette Extra		
--------------	---	--	--

Use the following parts to join the awnings:



4410 648-068	Couple bearing kit to connect 2 support rollers Markisolette Extra		
--------------	--	--	--

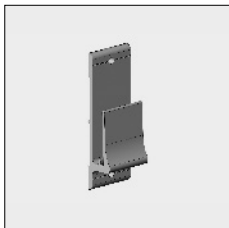
To use as support of the top cover at the centre fix bracket:



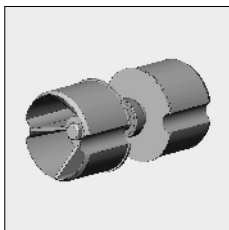
4410 655-068	Alu centre fix bracket incl. bearing blocks	Silver anodized	
--------------	---	-----------------	--

= Article will be sold out. Special orders remain possible.

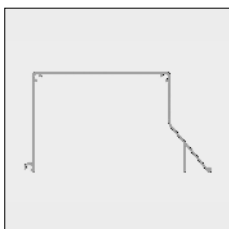
Part number	Description	Paint finish	Length in m ¹ Pack. Unit
-------------	-------------	--------------	--



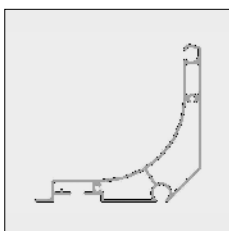
4210 060-001	Alu extruded bracket for top cover	Silver anodized	
4210 060-901	Idem	RAL 9001 cream	



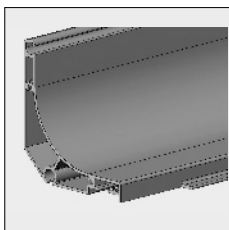
4470 011-068	Alu couple bearing with precision bearing for steel roller 78		
--------------	---	--	--



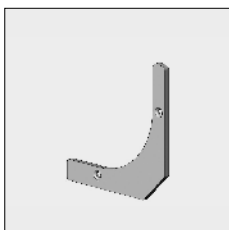
6295 022-000	Alu top cover Markisolette Extra	Mill finish	4.0
6295 022-016	Idem	Silver anodized	4.0
6295 022-901	Idem	RAL 9001 cream	4.0



6297 410-000	Alu front profile Markisolette Extra	Mill finish	6.0
6297 416-000	Idem	Mill finish	7.5
6297 412-016	Alu front profile Markisolette Extra	Silver anodized	5.0
6297 410-016	Idem	Silver anodized	6.0
6297 416-016	Idem	Silver anodized	7.5
6297 412-901	Alu front profile Markisolette Extra	RAL 9001 cream	5.0
6297 410-901	Idem	RAL 9001 cream	6.0
6297 416-901	Idem	RAL 9001 cream	7.5




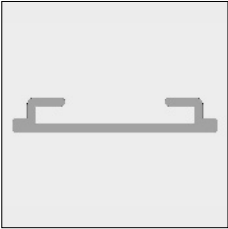
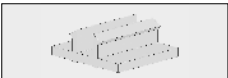
ATTENTION !!
Remove at both sides of the back lip, about 3 cm of the front profile, to prevent the front profile to jam against the back guide.



4452 960-000	Alu end cap for front profile	Mill finish	
4452 960-008	Idem	RAL 7035 light grey	
4452 960-901	Idem	RAL 9001 cream	

= Article will be sold out. Special orders remain possible.

Markisolette Extra

Part number	Description	Paint finish	Length in m ¹ Pack. Unit
	4452 083-000 Plate screw with countersunk Philips head 3.5 x 16 mm (For fixing the end cap to the front profile)		100
	6297 446-000 Alu cover profile for front profile	Mill finish	7.5
	6297 446-016 Idem	Silver anodized	7.5
	6297 446-006 Idem	RAL 9010 pure white	7.5
	6297 446-901 Idem	RAL 9001 cream	7.5
	4410 430-080 Nylon snap block for cover profile		100

Further requirements:

- Rollers refer to chapter 1
- Drop arms 4410 700-... refer to Markisolette Compact chapter 5A

= Article will be sold out. Special orders remain possible.