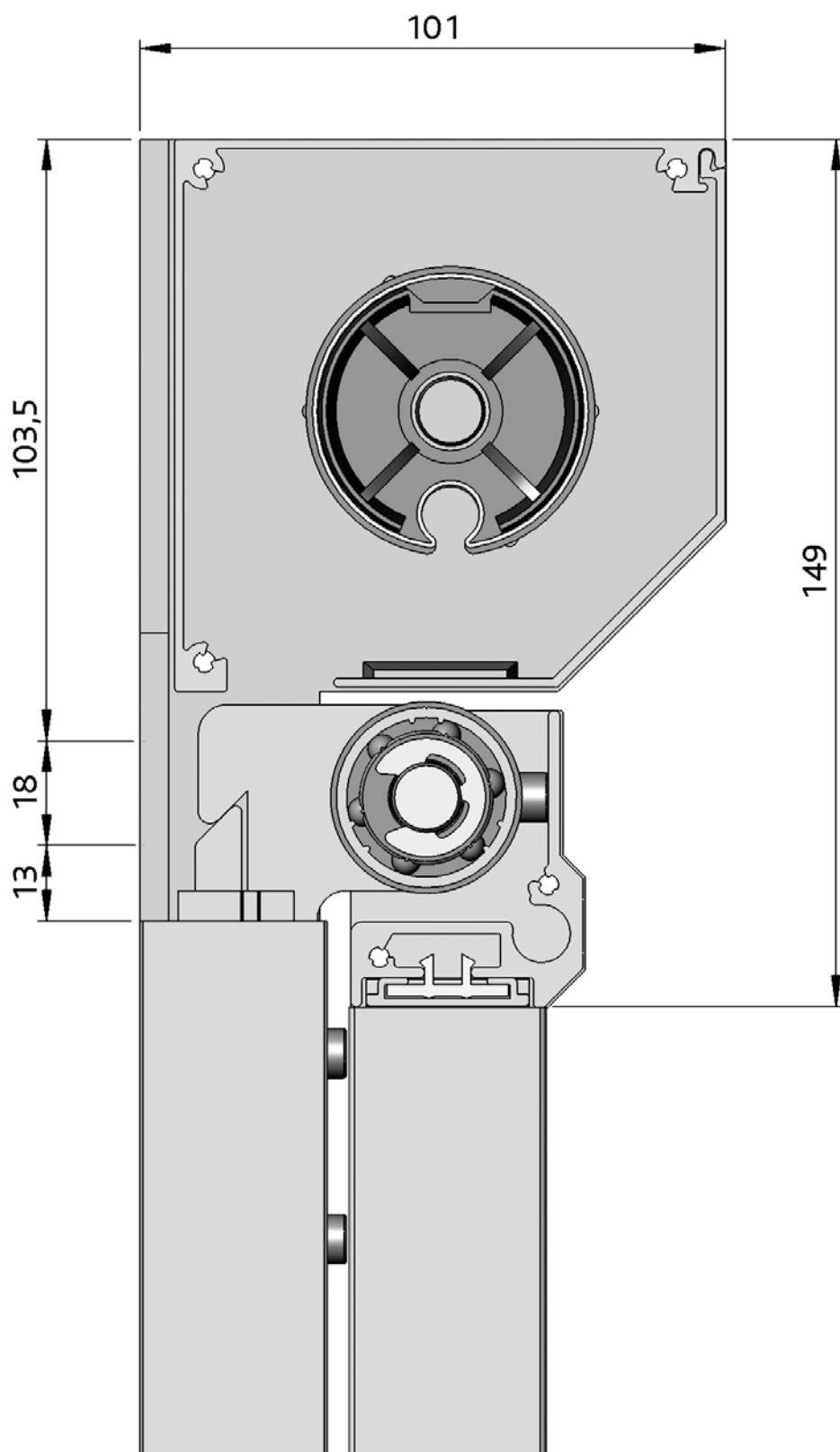




# Markisolette Compact

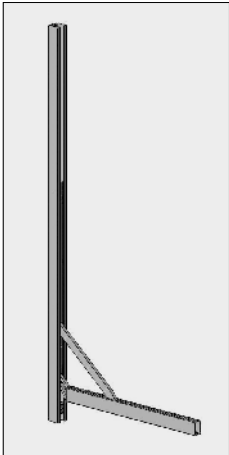
5



# Markisolette Compact

Part number	Description	Paint finish	Length in m <sup>1</sup> Pack. Unit
-------------	-------------	--------------	--

## Particulars:



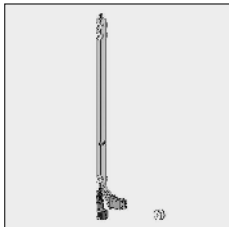
For drop arm awning Markisolette Compact the top cover and the slanted bottom cover of Screen 95 without lip are used, refer to chapter 6D. For the selection of the roller bungs we refer you to the data in screen 95 of chapter 6D.

The drop arms are standard delivered with a rear guide of 249 cm.  
The guide can be shortened at the top side. The position to where the arm has to be placed is adjustable.  
The drop arms are placed in the recess of the top cover support.

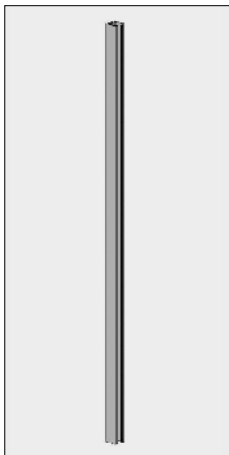
Maximum width 250 cm. Projection 80 cm.

4410 700-001	Alu drop arm Markisolette, wind proof, projection 80 cm	Silver anodized	
4410 700-006	Idem	RAL 9010 pure white	
4410 700-901	Idem	RAL 9001 cream	

## For Mill finished arms the following parts are delivered:



4410 699-001	Inner work set for drop arm Markisolette incl. assembling instructions	Silver anodized	
--------------	---	-----------------	--



4410 678-090	Alu rear guide 249 cm for drop arm Markisolette	Mill finish	
--------------	---	-------------	--

**ATTENTION !!**  
Powder coat the inside as thin as possible.

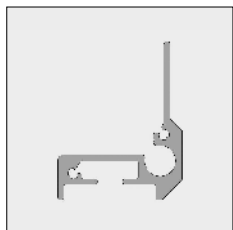
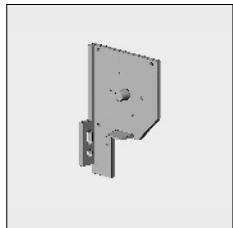
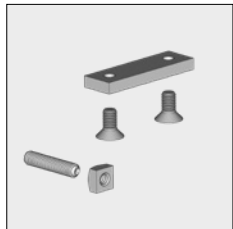
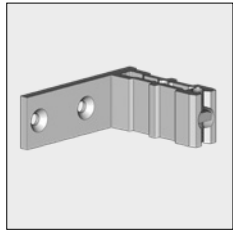
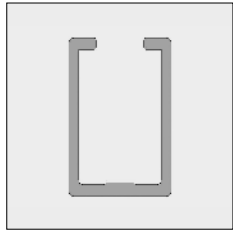


4410 679-090	Alu strut for drop arm Markisolette	Mill finish	
--------------	-------------------------------------	-------------	--

# = Article will be sold out. Special orders remain possible.

# Markisolette Compact

Part number	Description	Paint finish	Length in m <sup>1</sup> Pack. Unit
6296 080-000	Alu projection profile for drop arm Markisolette	Mill finish	5.65
4410 471-090	Alu top piece for drop arm Markisolette Compact	Mill finish	
4410 471-001	Idem	Silver anodized	
4410 471-006	Idem	RAL 9010 pure white	
4410 471-901	Idem	RAL 9001 cream	
4410 483-068	Fixing kit for top piece		10
4410 690-090	Alu end fix bracket Markisolette Compact	Mill finish	
4410 692-090	Idem, right	Mill finish	
4410 690-008	Alu end fix bracket Markisolette Compact	RAL 7035 light grey	
4410 692-008	Idem, right	RAL 7035 light grey	
4410 690-006	Alu end fix bracket Markisolette Compact	RAL 9010 pure white	
4410 692-006	Idem, right	RAL 9010 pure white	
4410 690-901	Alu end fix bracket Markisolette Compact	RAL 9001 cream	
4410 692-901	Idem	RAL 9001 cream	
6297 340-000	Alu front profile Markisolette Compact	Mill finish	6.0
6297 340-016	Idem	Silver anodized	6.0
6297 340-006	Idem	RAL 9010 pure white	6.0
6297 340-901	Idem	RAL 9001 cream	6.0
6253 072-000	Steel reinforcement strip 16 x 5 mm for front profile Markisolette Compact	Zinc-plated	3.0

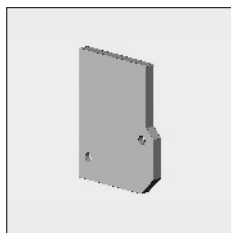


5

# = Article will be sold out. Special orders remain possible.

# Markisolette Compact

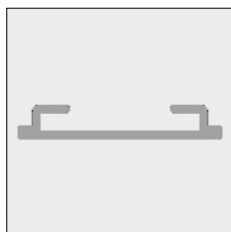
Part number	Description	Paint finish	Length in m <sup>1</sup> Pack. Unit
4410 620-000	Alu end cap front profile Markisolette Compact, left	Mill finish	
4410 622-000	Idem, right	Mill finish	
4410 620-008	Alu end cap front profile Markisolette Compact, left	RAL 7035 light grey	
4410 622-008	Idem, right	RAL 7035 light grey	
4410 620-006	Alu end cap front profile Markisolette Compact, left	RAL 9010 pure white	
4410 622-006	Idem, right	RAL 9010 pure white	
4410 620-901	Alu end cap front profile Markisolette Compact, left	RAL 9001 cream	
4410 622-901	Idem, right	RAL 9001 cream	



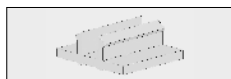
4452 083-000	Plate screw with countersunk Philips head 3.5 x 16 mm (For fixing the end caps to the front profile)		100
--------------	---	--	-----



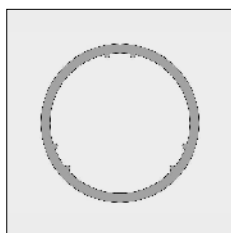
6297 446-000	Alu cover profile for front profile	Mill finish	7.5
6297 446-016	Idem	Silver anodized	7.5
6297 446-006	Idem	RAL 9010 pure white	7.5
6297 446-901	Idem	RAL 9001 cream	7.5



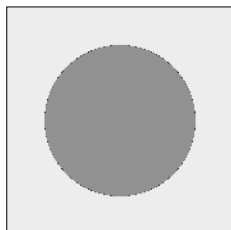
4410 430-080	Nylon snap block for cover profile	Transparent	100
--------------	------------------------------------	-------------	-----



6297 342-000	Alu support roller, round 26 x 31 mm	Mill finish	6.0
6297 342-016	Idem	Silver anodized	6.0
6297 342-006	Idem	RAL 9010 pure white	6.0
6297 342-901	Idem	RAL 9001 cream	6.0



6253 073-000	Steel reinforcement bar Ø 25 mm for support roller	Zinc-plated	3.0
--------------	--	-------------	-----




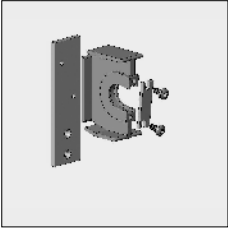
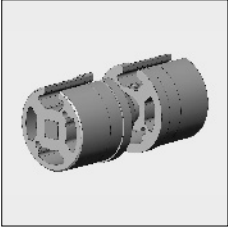
**Note:** Apply the adhesive tape to the end of the reinforcement bar, to avoid impact noise.

4410 637-068	Spare parts kit for support roller Markisolette Compact		
--------------	---	--	--



# = Article will be sold out. Special orders remain possible.

# Markisolette Compact

Part number	Description	Paint finish	Length in m <sup>1</sup> Pack. Unit
	4410 638-068 Couple bearing kit to connect 2 support rollers		
	4452 136-068 Centre bracket Screen 95 with wall plate		
	4469 055-068 Couple bearing with alu (extruded) roller bungs 48/50		
	4469 065-068 Idem, roller bungs 63/65		

#### Further requirements:

- Rollers refer to chapter 1
- End fix bracket Screen 95 without lip refer to chapter 6D
- Roller bungs refer to screen 95 chapter 6D

# = Article will be sold out. Special orders remain possible.