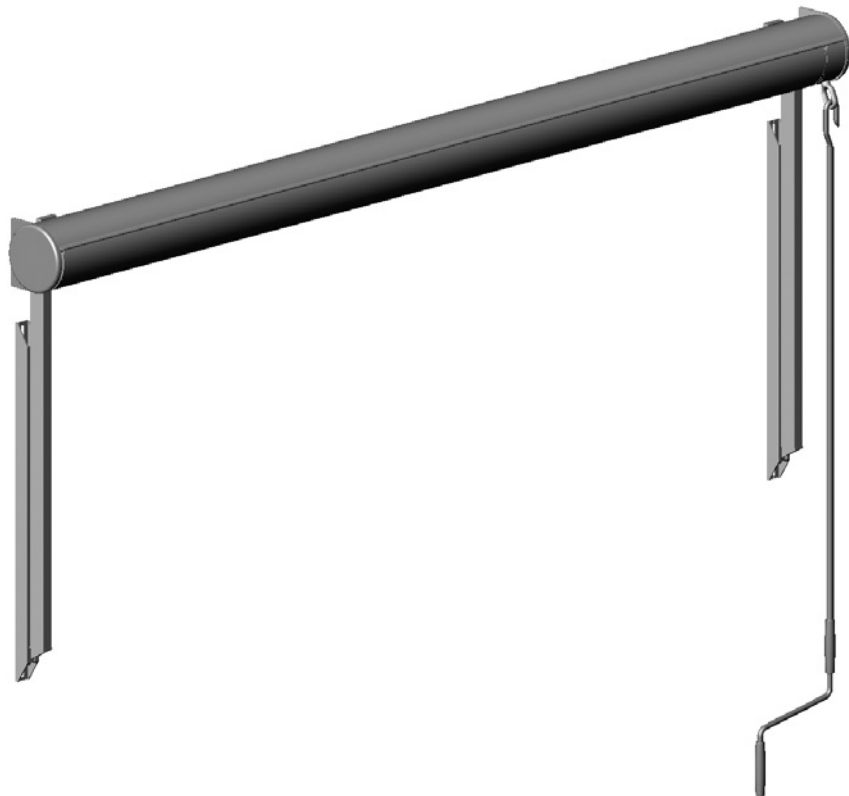
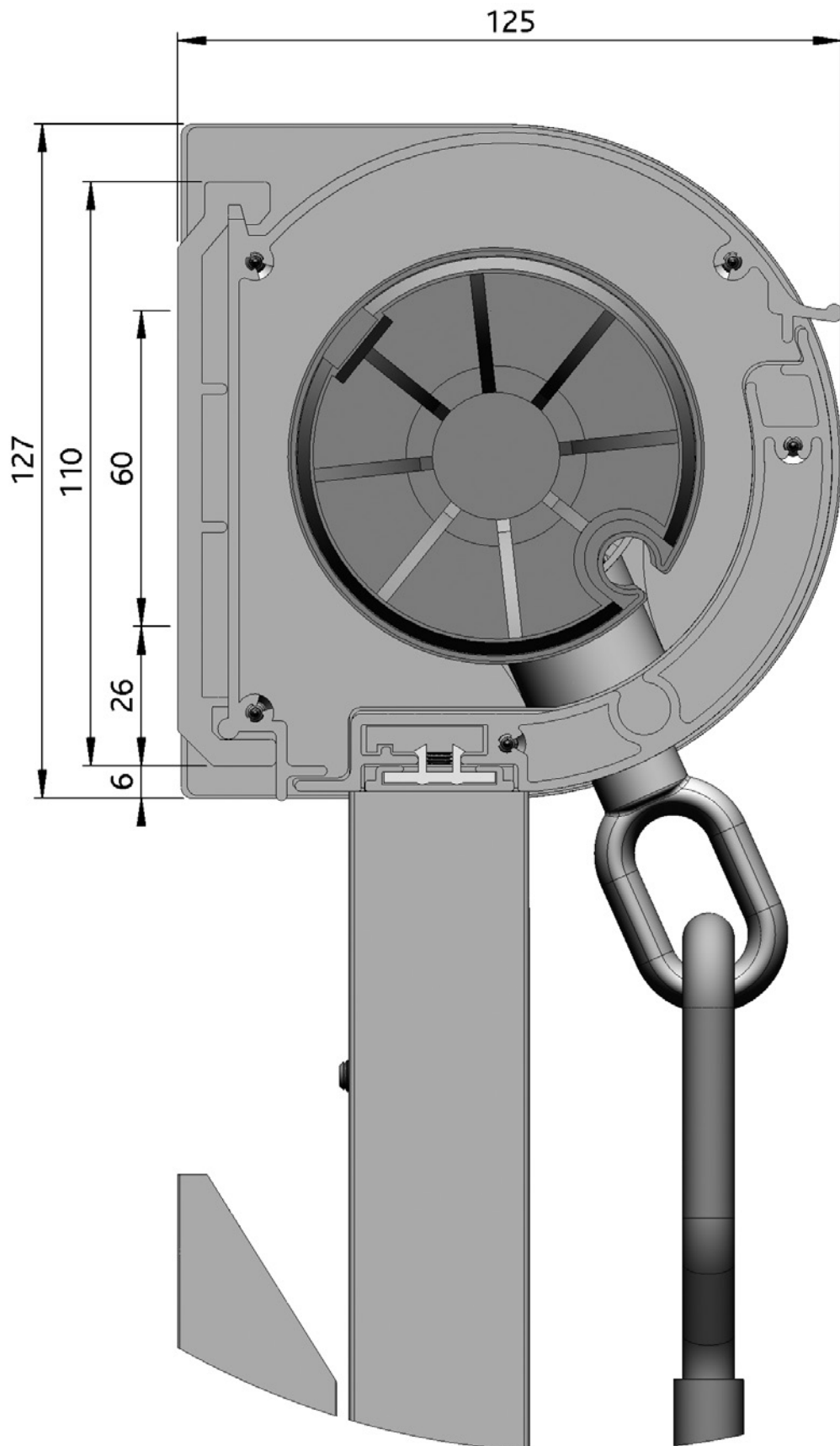


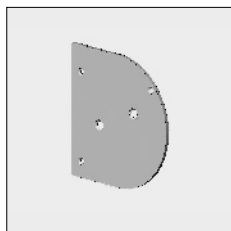


4



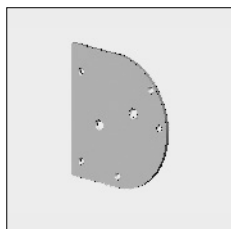


Part number	Description	Paint finish	Length in m <sup>1</sup> Pack. Unit
4452 905-090	Alu end plate Favorite, with 3 holes	Mill finish	
4452 905-001	Idem	Silver anodized	
4452 905-006	Idem	RAL 9010 pure white	
4452 905-901	Idem	RAL 9001 cream	
4452 905-755	Idem (* = textured)	RAL 7016 anthracite grey*	

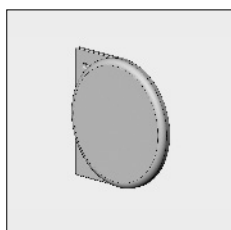


**When using a front profile spacer:**

4452 900-090	Alu end plate Favorite, with 5 holes	Mill finish	
4452 900-001	Idem	Silver anodized	
4452 900-006	Idem	RAL 9010 pure white	
4452 900-901	Idem	RAL 9001 cream	



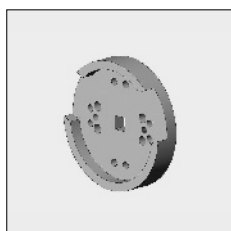
4452 083-000	Plate screw with countersunk Philips head 3.5 x 16 mm (For fixing the end plate to the top cover)		100
--------------	--	--	-----



4452 930-000	Alu cover plate Favorite, left	Mill finish	
4452 932-000	Idem, right	Mill finish	
4452 930-008	Alu cover plate Favorite, left	RAL 7035 light grey	
4452 932-008	Idem, right	RAL 7035 light grey	
4452 930-006	Alu cover plate Favorite, left	RAL 9010 pure white	
4452 932-006	Idem, right	RAL 9010 pure white	
4452 930-901	Alu cover plate Favorite, left	RAL 9001 cream	
4452 932-901	Idem, right	RAL 9001 cream	
4452 930-755	Alu cover plate Favorite, left	RAL 7016 anthracite grey*	
4452 932-755	Idem, right (* = textured)	RAL 7016 anthracite grey*	



4452 094-000	Chipboard screw with countersunk Philips head M3.5 x 30 mm (For fixing the cover plate to the top cover)		100
--------------	---	--	-----



4452 910-000	Alu multipurpose fixing pulley with stopper for front profile, applicable for: - Fixing gear box inside operation 4000 514-000 - Fixing bearing pin (can also be fixed directly on the end plate) - For motors with a square pin 10 mm (can also be fixed with regular motor bracket directly on the end plate)		
--------------	--	--	--

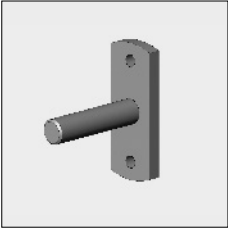
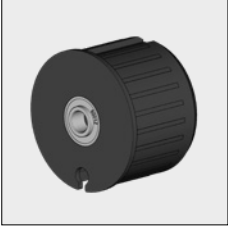
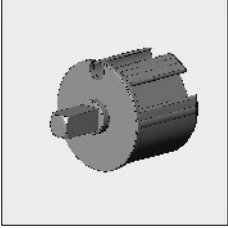
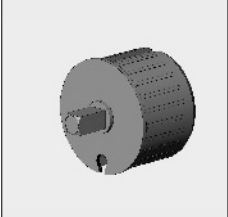


4000 151-000	Stainless steel screw countersunk Philips head M6 x 12 mm (For fixing the bearing block to the end plate)		100
--------------	--	--	-----

# = Article will be sold out. Special orders remain possible.

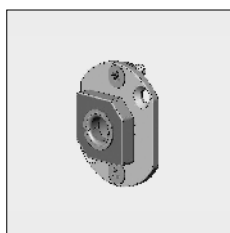
# Vista Favorite®

4

	Part number	Description	Paint finish	Length in m <sup>1</sup> Pack. Unit
	4210 498-080	Steel bearing pin 12 mm with fixing plate	Zinc-plated	10
	4000 154-000	Stainless steel screw with countersunk Philips head M6 x 16 mm (For fixing the bearing pin to the bearing block)		50
<b>For fixing without bearing block:</b>				
	4210 484-000	Stainless steel screw with countersunk Philips head M6 x 10 mm		100
	4452 225-068	Nylon bearing roller bung 63 incl. bearing with increased inner ring		25
	4470 080-068	Nylon bearing roller bung 78 incl. bearing with increased inner ring	Grey	10
	4470 032-080	Nylon mono plug 63 with square spindle 13 x 25 mm		25
	4469 066-068	Alu (extruded) mono plug 63, with square spindle 13 x 25 mm		
	4470 088-000	Nylon mono plug 78, with square spindle 13 x 25 mm, flange 3 mm	Grey	
	4000 330-000	Alu mono plug 78, with square spindle 13 x 30 mm, flange 3 mm		50

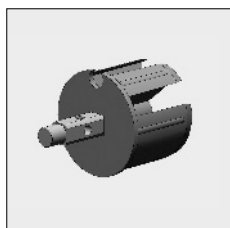
# = Article will be sold out. Special orders remain possible.

Part number	Description	Paint finish	Length in m <sup>1</sup> Pack. Unit
-------------	-------------	--------------	--



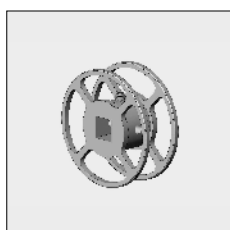
4452 050-068 Alu bearing block with slide bearing, spindle hole 15 mm, incl. mounting material

**When using pulley roller bung, please use above-mentioned bearing block:**

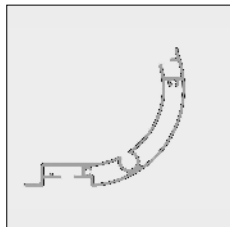


4469 068-068 Nylon pulley roller bung 63, with spindle 12 mm

4469 062-068 Alu (extruded) pulley roller bung 63, with spindle 12 mm



4469 070-068 Alu (extruded) manual tape/steel wire pulley 70 mm, used for pulley roller bungs 4469 068/062/078-068



6297 452-000 # Alu front profile Favorite Mill finish 5.0

6297 458-000 Idem Mill finish 7.5

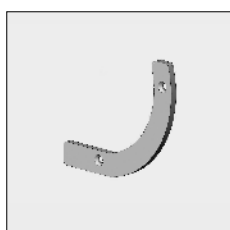
6297 452-016 # Alu front profile Favorite Silver anodized 5.0

6297 458-016 Idem Silver anodized 7.5

6297 458-006 Alu front profile Favorite RAL 9010 pure white 7.5

6297 458-901 Alu front profile Favorite RAL 9001 cream 7.5

6297 458-755 Alu front profile Favorite (\* = textured) RAL 7016 anthracite grey\* 7.5



4452 915-000 Alu end cap for front profile without stopper Mill finish

4452 915-008 Idem RAL 7035 light grey

4452 915-006 Idem RAL 9010 pure white

4452 915-901 Idem RAL 9001 cream

4452 915-755 Idem (\* = textured) RAL 7016 anthracite grey\*

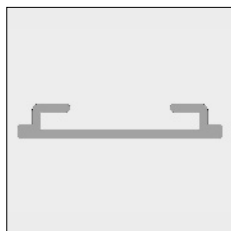


4452 083-000 Plate screw with countersunk Philips head 3.5 x 16 mm (For fixing the end cap to the front profile) 100

# = Article will be sold out. Special orders remain possible.

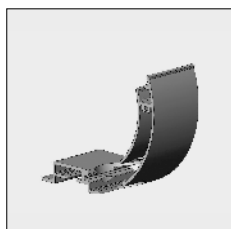
# Vista Favorite®

Part number	Description	Paint finish	Length in m <sup>1</sup> Pack. Unit
6297 446-000	Alu cover profile for front profile	Mill finish	7.5
6297 446-016	Idem	Silver anodized	7.5
6297 446-006	Idem	RAL 9010 pure white	7.5
6297 446-901	Idem	RAL 9001 cream	7.5
6297 446-755	Idem (* = textured)	RAL 7016 anthracite grey*	7.5

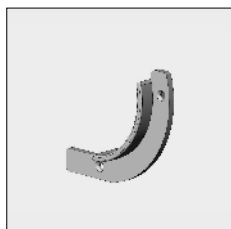


4410 430-080	Nylon snap block for cover profile		100
--------------	------------------------------------	--	-----

**By operation with gear box 4000 513/512-000 the end plate can be supplied with a front profile spacer:**



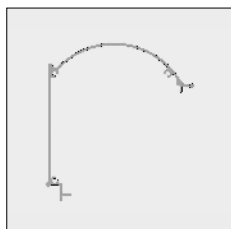
4452 920-001	Alu front profile spacer Favorite, left	Silver anodized	
4452 922-001	Idem, right	Silver anodized	
4452 920-006	Alu front profile spacer Favorite, left	RAL 9010 pure white	
4452 920-901	Alu front profile spacer Favorite, left	RAL 9001 cream	
4452 922-901	Idem, right	RAL 9001 cream	



4452 917-000	Alu end cap with stopper for front profile spacer	Mill finish	
4452 917-008	Idem	RAL 7035 light grey	
4452 917-006	Idem	RAL 9010 pure white	
4452 917-901	Idem	RAL 9001 cream	



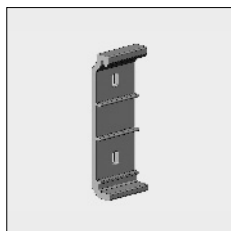
4452 083-000	Plate screw with countersunk Philips head 3.5 x 16 mm (For fixing front profile spacer to the end plate and end cap to the front profile spacer)		100
--------------	---	--	-----



6297 422-000 #	Alu top cover Favorite	Mill finish	5.0
6297 426-000	Idem	Mill finish	7.5
6297 422-016 #	Alu top cover Favorite	Silver anodized	5.0
6297 426-016	Idem	Silver anodized	7.5
6297 426-006	Alu top cover Favorite	RAL 9010 pure white	7.5
6297 426-901	Alu top cover Favorite	RAL 9001 cream	7.5
6297 426-755	Alu top cover Favorite (*= textured)	RAL 7016 anthracite grey*	7.5

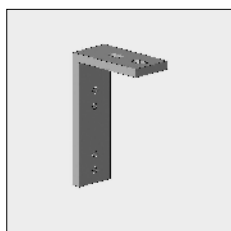
# = Article will be sold out. Special orders remain possible.

Part number	Description	Paint finish	Length in m <sup>1</sup> Pack. Unit
4452 908-090	Alu wall bracket without socket-head screw wrench M6 x 10 mm	Mill finish	
4452 908-001	Idem, incl. socket-head screw wrench	Silver anodized	10
4452 908-006	Idem, incl. socket-head screw wrench	RAL 9010 pure white	10
4452 908-901	Idem, incl. socket-head screw wrench	RAL 9001 cream	10
4452 908-755	Idem, incl. socket-head screw wrench (* = textured)	RAL 7016 anthracite grey*	10

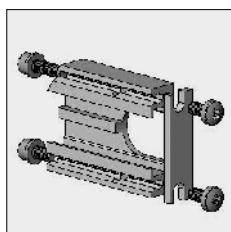


**Please use the ceiling brackets below in combination with wall bracket 4452 908-...**

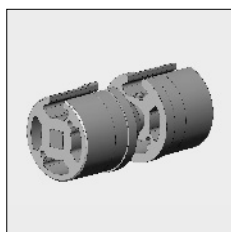
4452 924-090	Alu ceiling bracket	Mill finish	
4452 924-008	Idem	RAL 7035 light grey	
4452 924-006	Idem	RAL 9010 pure white	
4452 924-901	Idem	RAL 9001 cream	



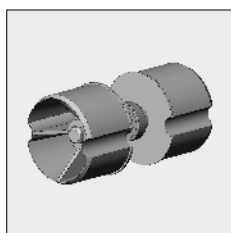
4460 012-068	Alu coupler Favorite for couple bearing with alu roller bungs		
--------------	---	--	--



4469 065-068	Alu couple bearing with alu (extruded) roller bungs 63		
--------------	--	--	--



4470 011-068	Alu couple bearing with precision bearing for steel roller 78		
--------------	---	--	--



**Further requirements:**  
 - Rollers refer to chapter 1  
 - Drop arms, units and top sections refer to chapter 4H.

# = Article will be sold out. Special orders remain possible.