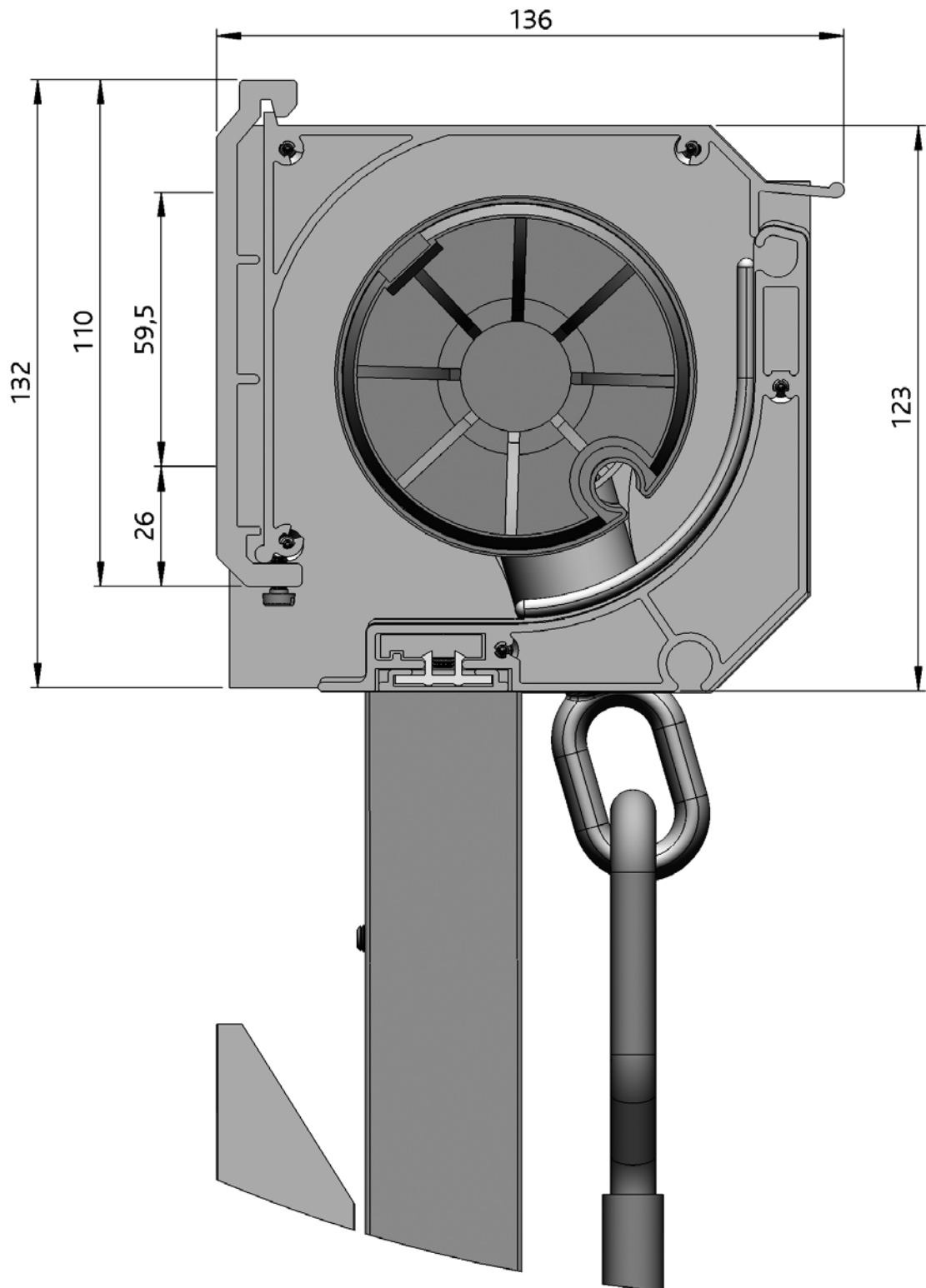




In the course of 2018, the Vista Elégance 110 will be adjusted to a cassette version. For this there will be a new cover profile, side plates and alu cover plates. the new chapter (version 1.07) has already been added after this chapter.

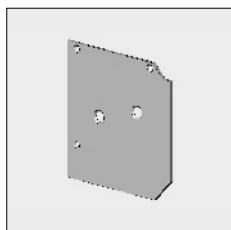
Vista Elégance® 110

4



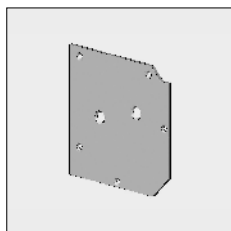
In the course of 2018, the Vista Elegance 110 will be adjusted to a cassette version. For this there will be a new cover profile, side plates and alu cover plates. the new chapter (version 1.07) has already been added after this chapter.

Part number	Description	Paint finish	Length in m ¹ Pack. Unit
-------------	-------------	--------------	--

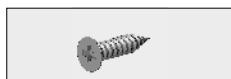


4452 950-090	Alu end plate Elégance 110, bright with 3 holes	Mill finish	
4452 950-001	Idem	Silver anodized	
4452 950-006	Idem	RAL 9010 pure white	
4452 950-901	Idem	RAL 9001 cream	

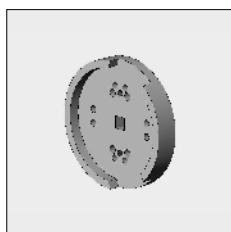
When using a front profile spacer:



4452 955-090	Alu end plate Elégance 110, with 5 holes	Mill finish	
4452 955-001	Idem	Silver anodized	
4452 955-006	Idem	RAL 9010 pure white	
4452 955-901	Idem	RAL 9001 cream	



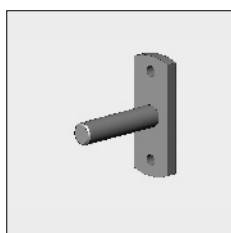
4452 083-000	Plate screw with countersunk Philips head 3.5 x 16 mm (For fixing top cover support to the top cover).		100
--------------	---	--	-----



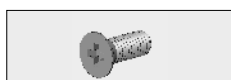
4452 965-000	Alu multipurpose mounting pulley with stopper for front profile, applicable for: - Fixing gear boxes inside operation 4000 514-000 - For fixing bearing pin (can also be fixed directly on the end cap) - For motors with a square spindle 10 mm (can also be fixed with a regular motor bracket directly on the end cap)		
--------------	--	--	--



4000 151-000	Stainless steel screw with countersunk Philips head M6 x 12 mm (For fixing the bearing block to the end plate)		100
--------------	---	--	-----

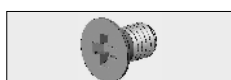


4210 498-080	Steel bearing pin 12 mm with fixing plate	Zinc-plated	10
--------------	---	-------------	----



4000 154-000	Stainless steel screw with countersunk Philips head M6 x 16 mm (For fixing the bearing pin to the bearing block)		50
--------------	---	--	----

For fixing without bearing block:



4210 484-000	Stainless steel screw with countersunk Philips head M6 x 10 mm (For fixing bearing pin)		100
--------------	--	--	-----

= Article will be sold out. Special orders remain possible.

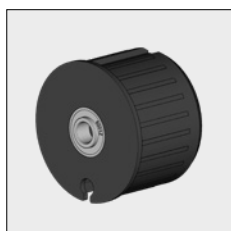
Vista Elégance® 110

Part number	Description	Paint finish	Length in m ¹ Pack. Unit
-------------	-------------	--------------	--



4452 225-068 Nylon bearing roller bung 63 incl. bearing with increased inner ring

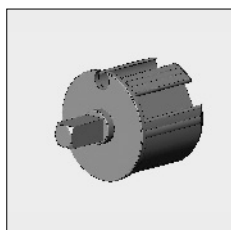
25



4470 080-068 Nylon bearing roller bung 78 incl. bearing with increased inner ring

Grey

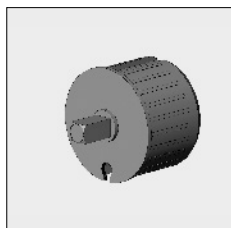
10



4470 032-080 Nylon mono plug 63, with square spindle 13 x 25 mm

25

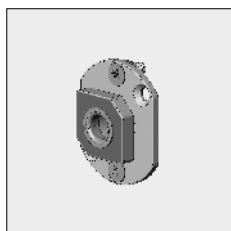
4469 066-068 Alu (extruded) mono plug 63, with square spindle 13 x 25 mm



4470 088-000 Nylon mono plug 78, with square spindle 13 x 25 mm, flange 3 mm

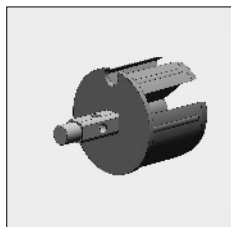
Grey

4000 330-000 Alu mono plug 78, with square spindle 13 x 30 mm, flange 3 mm



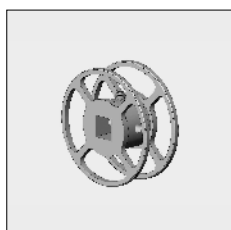
4452 050-068 Alu bearing block with slide bearing, spindle hole 15 mm, incl. fixing material

When using a pulley roller bung, please use the above mentioned bearing block (4452 050-)



4469 068-068 Nylon pulley roller bung 63, with spindle 12 mm

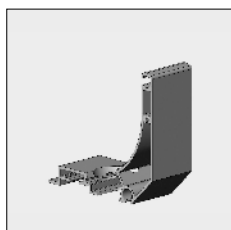
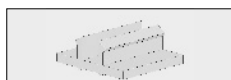
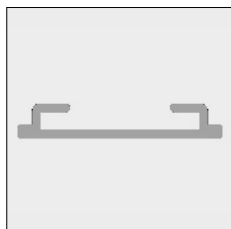
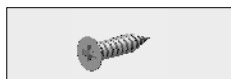
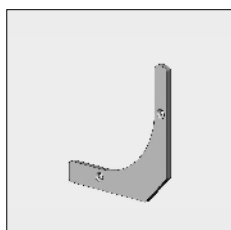
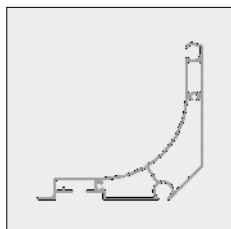
4469 062-068 Alu (extruded) pulley roller bung 63, with spindle 12 mm



4469 070-068 Alu (extruded) manual tape/steel wire pulley 70 mm, for pulley roller bungs 4469 068/062/078-068

= Article will be sold out. Special orders remain possible.

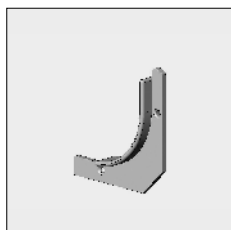
Part number	Description	Paint finish	Length in m ¹ Pack. Unit
6297 412-000	Alu front profile Elégance 110	Mill finish	5.0
6297 410-000	Idem	Mill finish	6.0
6297 416-000	Idem	Mill finish	7.5
6297 412-016	Alu front profile Elégance 110	Silver anodized	5.0
6297 410-016	Idem	Silver anodized	6.0
6297 416-016	Idem	Silver anodized	7.5
6297 416-006	Alu front profile Elégance 110	RAL 9010 pure white	7.5
6297 412-901	Alu front profile Elégance 110	RAL 9001 cream	5.0
6297 410-901	Idem	RAL 9001 cream	6.0
6297 416-901	Idem	RAL 9001 cream	7.5
4452 964-000	Alu end cap for front profile without stopper	Mill finish	
4452 964-008	Idem	RAL 7035 light grey	
4452 964-006	Idem	RAL 9010 pure white	
4452 964-901	Idem	RAL 9001 cream	
4452 083-000	Plate screw with countersunk Philips head 3.5 x 16 mm (For fixing the end cap to the front profile).		100
6297 446-000	Alu cover profile for front profile	Mill finish	7.5
6297 446-016	Idem	Silver anodized	7.5
6297 446-006	Idem	RAL 9010 pure white	7.5
6297 446-901	Idem	RAL 9001 cream	7.5
4410 430-080	Nylon snap block for cover profile		100
By operation with gear box 4000 513/512-000 the end plate can be supplied with a front profile spacer:			
4452 970-001	Alu front profile spacer Elégance 110, left	Silver anodized	
4452 972-001	Idem, right	Silver anodized	
4452 970-006	Alu front profile spacer Elégance 110, left	RAL 9010 pure white	
4452 972-006	Idem, right	RAL 9010 pure white	
4452 970-901	Alu front profile spacer Elégance 110, left	RAL 9001 cream	
4452 972-901	Idem, right	RAL 9001 cream	



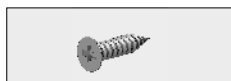
= Article will be sold out. Special orders remain possible.

Vista Elégance® 110

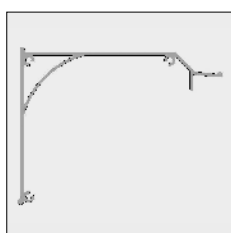
Part number	Description	Paint finish	Length in m ¹ Pack. Unit
-------------	-------------	--------------	--



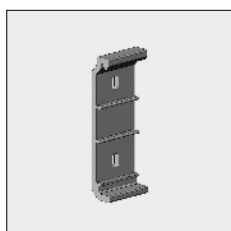
4452 962-000	Alu end cap with stopper for front profile spacer	Mill finish	
4452 962-008	Idem	RAL 7035 light grey	
4452 962-006	Idem	RAL 9010 pure white	
4452 962-901	Idem	RAL 9001 cream	



4452 083-000	Plate screw with countersunk Philips head 3.5 x 16 mm (For fixing the front profile spacer to the end plate and end cap front profile to the front profile spacer).		100
--------------	--	--	-----

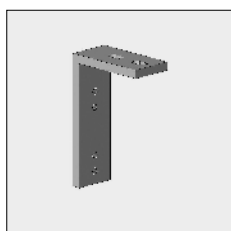


6297 402-000	Alu top cover Elégance 110	Mill finish	5.0
6297 400-000	Idem	Mill finish	6.0
6297 406-000	Idem	Mill finish	7.5
6297 402-016	Alu top cover Elégance 110	Silver anodized	5.0
6297 400-016	Idem	Silver anodized	6.0
6297 406-016	Idem	Silver anodized	7.5
6297 406-006	Alu top cover Elégance 110	RAL 9010 pure white	7.5
6297 402-901	Alu top cover Elégance 110	RAL 9001 cream	5.0
6297 400-901	Idem	RAL 9001 cream	6.0
6297 406-901	Idem	RAL 9001 cream	7.5



4452 908-090	Alu wall bracket excl. socket-head screw wrench M6 x 10 mm	Mill finish	
4452 908-001	Idem, incl. socket-head screw wrench	Silver anodized	10
4452 908-006	Idem, incl. socket-head screw wrench	RAL 9010 pure white	10
4452 908-901	Idem, incl. socket-head screw wrench	RAL 9001 cream	10

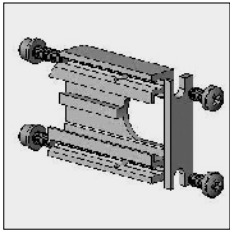
Please use the ceiling bracket below in combination with wall bracket 4452 908-...:



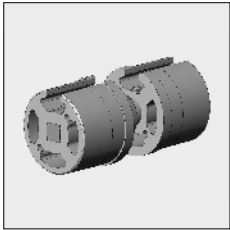
4452 924-090	Alu ceiling bracket	Mill finish	
4452 924-008	Idem	RAL 7035 light grey	
4452 924-006	Idem	RAL 9010 pure white	
4452 924-901	Idem	RAL 9001 cream	

= Article will be sold out. Special orders remain possible.

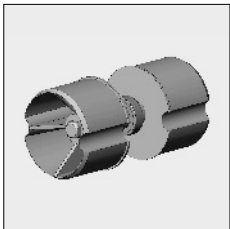
Part number	Description	Paint finish	Length in m ¹ Pack. Unit
-------------	-------------	--------------	--



4460 011-068 Alu coupler Elégance 110 for couple bearing with alu roller bungs



4469 065-068 Alu couple bearing with alu (extruded) roller bungs 63



4470 011-068 Alu couple bearing with precision bearing for steel roller 78

Further requirements:

- Rollers refer to chapter 1
- Drop arms, units and top sections refer to chapter 4H.

= Article will be sold out. Special orders remain possible.

