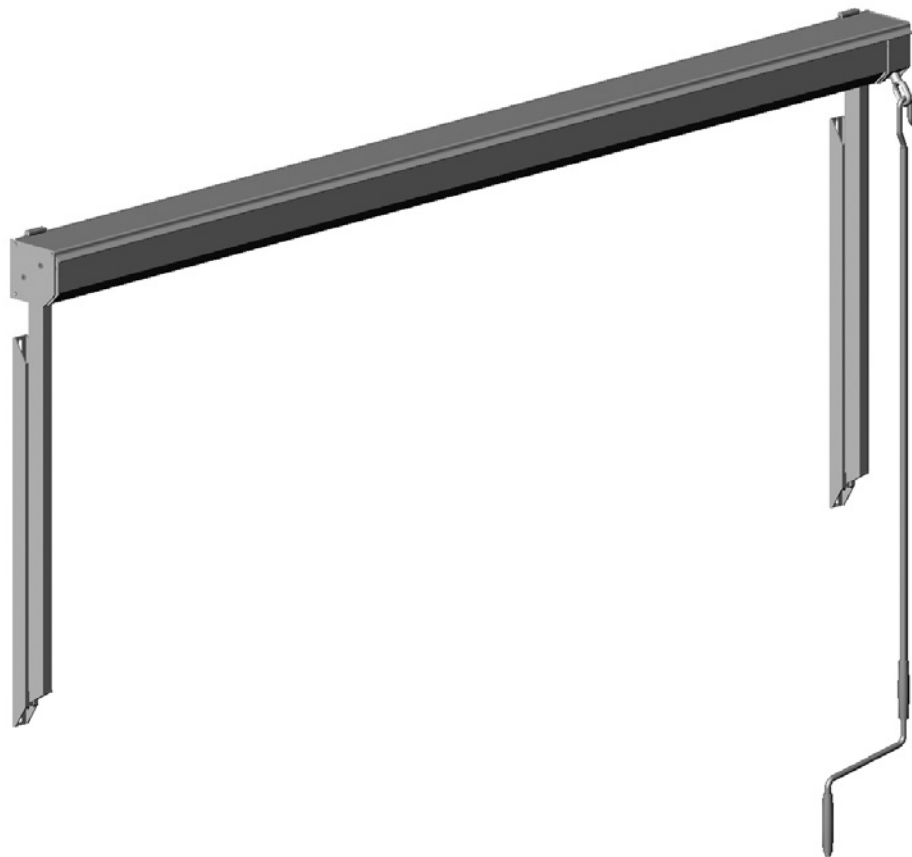
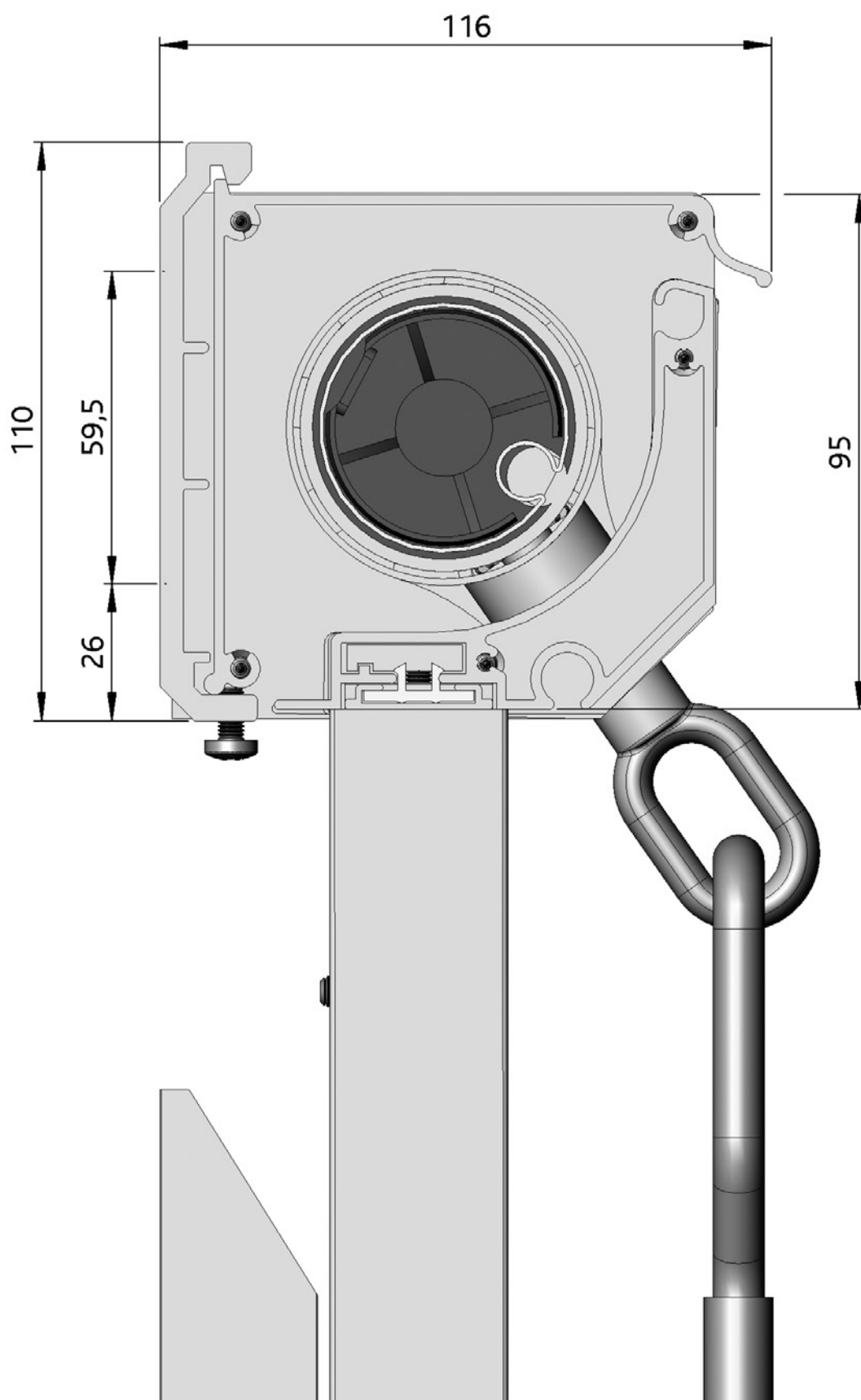


4

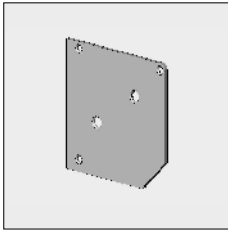


Vista Elégance® 95 slanted

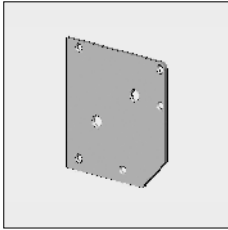


4

Part number	Description	Paint finish	Length in m ¹ Pack. Unit
-------------	-------------	--------------	--

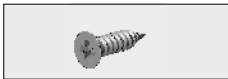


4410 443-090	Alu end plate Elégance 95 slanted, with 3 holes	Mill finish	
4410 443-001	Idem	Silver anodized	
4410 443-901	Idem	RAL 9001 cream	



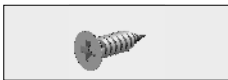
When using a front profile - front profile spacer:

4410 445-090	Alu end plate Elégance 95 slanted, with 5 holes	Mill finish	
4410 445-001	Idem	Silver anodized	
4410 445-006	Idem	RAL 9010 pure white	
4410 445-901	Idem	RAL 9001 cream	

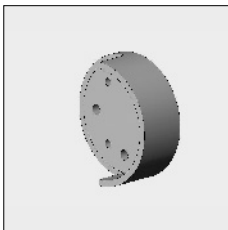


4452 081-000	Plate screw with countersunk Philips head 3.9 x 16 mm (For fixing the end plate to the top cover).		100
--------------	---	--	-----

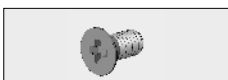
For fixing the top cover Silver anodized:



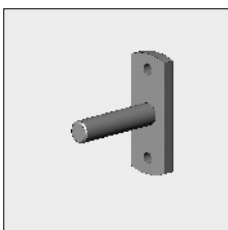
4452 080-000	Plate screw with countersunk Philips head 4.2 x 16 mm		100
--------------	---	--	-----



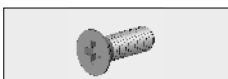
4410 435-000	Alu mounting pulley with stopper, for fixing: - Gear boxes inside operation 4000 514-000 or 4452 109-000 - Bearing pin or motor bracket 4000 979-000 (can be fixed directly on the end plate)		
--------------	--	--	--



4000 151-000	Stainless steel screw with countersunk Philips head M6 x 12 mm (For fixing the pulley to the end plate)		100
--------------	--	--	-----

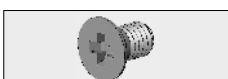


4210 498-080	Steel bearing pin 12 mm with fixing plate	zinc-plated	10
--------------	---	-------------	----



4000 158-000	Stainless steel screw with countersunk Philips head M6 x 18 mm (For fixing the bearing pin or the motor bracket by means of the pulley to the end plate).		100
--------------	--	--	-----

For fixing without pulley:



4210 484-000	Stainless steel screw with countersunk Philips head M6 x 10 mm		100
--------------	--	--	-----

= Article will be sold out. Special orders remain possible.

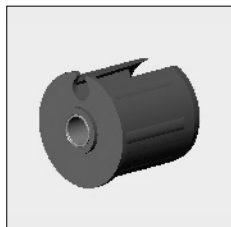
Vista Elégance® 95 slanted

4

Part number	Description	Paint finish	Length in m ¹ Pack. Unit
-------------	-------------	--------------	--



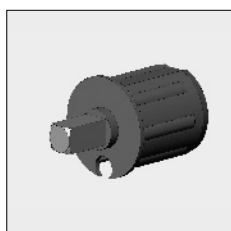
4210 497-000	Nylon washer 20 x 12 x 2 mm		50
--------------	-----------------------------	--	----



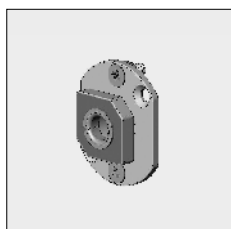
4470 058-068	Nylon bearing roller bung 48 with slide bearing		10
--------------	---	--	----



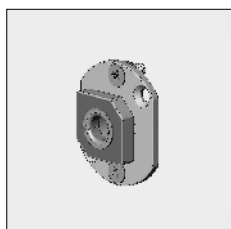
4452 225-068	Nylon bearing roller bung 63 ncl. bearing with increased inner ring		10
--------------	---	--	----



4470 062-080	Nylon mono plug 48 with square spindle 13 x 30 mm		25
4469 056-068	Alu (extruded) mono plug 48, with square spindle 13x25 mm		

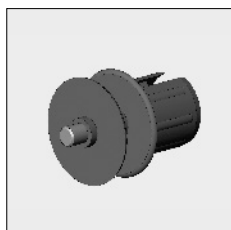


4470 032-080	Nylon mono plug 63 with square spindle 13 x 25mm		25
4469 066-068	Alu (extruded) mono plug 63, with square spindle 13 x 25 mm		

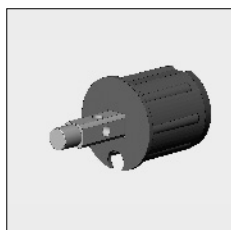


4452 050-068	Alu bearing block with slide bearing, spindle hole 15 mm, incl. fixing material		
--------------	---	--	--

When using a pulley roller bung please use the above-mentioned bearing block.



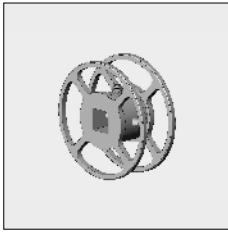
4470 054-080	Nylon bearing roller bung 48 with nylon pulley 70 mm, with spindle 12 mm		25
--------------	--	--	----



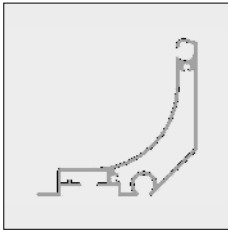
4469 058-068	Nylon pulley roller bung 48, with spindle 12 mm		
4469 052-068	Alu (extruded) pulley roller bung 48, with spindle 12 mm		
4469 068-068	Nylon pulley roller bung 63, with spindle 12 mm		
4469 062-068	Alu (extruded) pulley roller bung 63, with spindle 12 mm		

= Article will be sold out. Special orders remain possible.

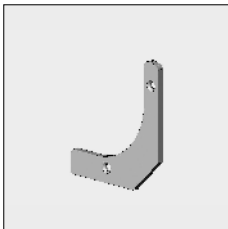
Part number	Description	Paint finish	Length in m ¹ Pack. Unit
-------------	-------------	--------------	--



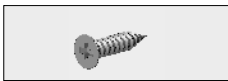
4469 070-068 Alu (extruded) manual tape/steel wire/pulley 70 mm,
for pulley roller bungs 4469 058/052/068/062-068



6296 514-000	Alu front profile Elégance 95, slanted	Mill finish	7.5
6296 514-016	Idem	Silver anodized	7.5
6296 514-006	Idem	RAL 9010 pure white	7.5
6296 514-901	Idem	RAL 9001 cream	7.5

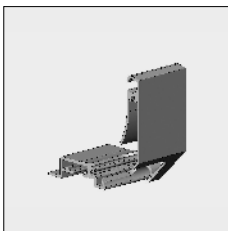


4410 440-090	Alu end cap for front profile	Mill finish	
4410 440-001	Idem	Silver anodized	
4410 440-006	Idem	RAL 9010 pure white	
4410 440-901	Idem	RAL 9001 cream	

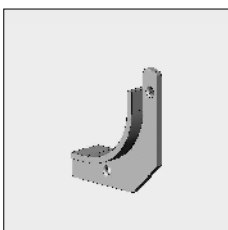


4452 083-000 Plate screw with countersunk Philips head 3.5 x 16 mm
(For fixing the end cap to the front profile and front profile spacer
to the end plate and end cap front profile). 100

For operation through gear box 4000 513-000, the side plate can be provided with a front profile spacer:



4410 446-001	Alu front profile spacer Elégance 95 slanted, left	Silver anodized	
4410 448-001	Idem, right	Silver anodized	
4410 446-006	Alu front profile spacer Elégance 95 slanted, left	RAL 9010 pure white	
4410 448-006	Idem, right	RAL 9010 pure white	
4410 446-901	Alu front profile spacer Elégance 95 slanted, left	RAL 9001 cream	
4410 448-901	Idem, right	RAL 9001 cream	



4410 432-008	Alu end cap with stopper for front profile spacer	RAL 7035 light grey	
4410 432-006	Idem	RAL 9010 pure white	
4410 432-901	Idem	RAL 9001 cream	

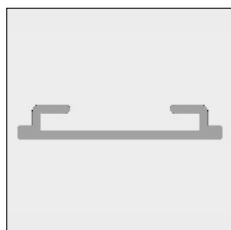


4452 083-000 Plate screw with countersunk Philips head 3.5 x 16 mm
(For fixing the end cap to the front profile and front profile spacer
to the end plate and the end cap). 100

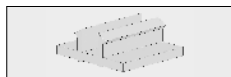
= Article will be sold out. Special orders remain possible.

Vista Elégance® 95 slanted

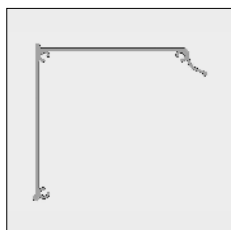
Part number	Description	Paint finish	Length in m ¹ Pack. Unit
-------------	-------------	--------------	--



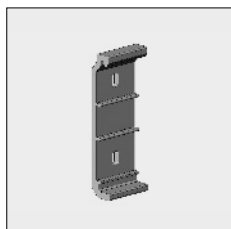
6297 446-000	Alu cover profile for front profile	Mill finish	7.5
6297 446-016	Idem	Silver anodized	7.5
6297 446-006	Idem	RAL 9010 pure white	7.5
6297 446-901	Idem	RAL 9001 cream	7.5



4410 430-080	Nylon snap block for cover profile		100
--------------	------------------------------------	--	-----

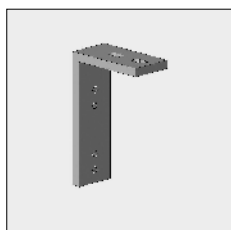


6296 526-000	Alu top cover Elégance 95 special	Mill finish	7.0
6296 525-000	Idem	Mill finish	7.5
6296 526-016	Alu top cover Elégance 95 special	Silver anodized	7.0
6296 525-016	Idem	Silver anodized	7.5
6296 526-006	Alu top cover Elégance 95 special	RAL 9010 pure white	7.0
6296 525-006	Idem	RAL 9010 pure white	7.5
6296 526-901	Alu top cover Elégance 95 special	RAL 9001 cream	7.0
6296 525-901	Idem	RAL 9001 cream	7.5

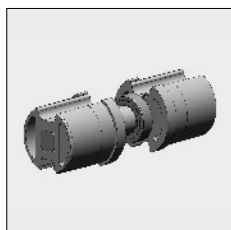


4452 908-090	Alu wall bracket excl. socket-head screw wrench M6x10	Mill finish	
4452 908-001	Idem, incl socket-head screw wrench	Silver anodized	10
4452 908-006	Idem, incl socket-head screw wrench	RAL 9010 pure white	10
4452 908-901	Idem, incl socket-head screw wrench	RAL 9001 cream	10

Please use the ceiling brackets below in combination with the wall bracket 4452 908-...



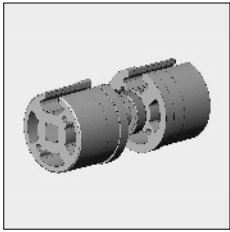
4452 924-090	Alu ceiling bracket	Mill finish	
4452 924-008	Idem	RAL 7035 light grey	
4452 924-006	Idem	RAL 9010 pure white	
4452 924-901	Idem	RAL 9001 cream	



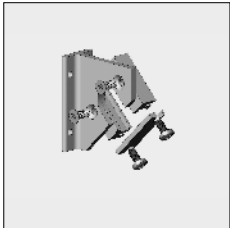
4469 054-068	Alu (extruded) couple bearing with precision bearing for rollers in steel 48 and in alu 50		
--------------	--	--	--

= Article will be sold out. Special orders remain possible.

Part number	Description	Paint finish	Length in m ¹ Pack. Unit
-------------	-------------	--------------	--



4469 064-068 Alu (extruded) couple bearing with precision bearing for rollers in steel 63



4452 062-001 Alu coupler with bearing block and plate (used for couple bearing)

Silver anodized

Further requirements:

- Rollers refer to chapter 1
- Drop arms, units and top sections refer to chapter 4H.

= Article will be sold out. Special orders remain possible.

