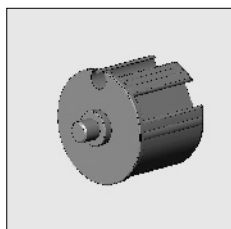


| Part number | Description | Paint finish | Length in m ¹ Pack. Unit |
|--------------|---|-----------------|--|
| 4465 020-090 | Alu top cover support for top cover 65/110, left | Mill finish | |
| 4465 022-090 | Idem, right | Mill finish | |
| 4465 020-001 | Alu top cover support for top cover 65/110, left | Silver anodized | |
| 4465 022-001 | Idem, right | Silver anodized | |
| 4460 026-080 | Nylon bearing block for top cover Comfort 65/110, 22,5° and 45°, spindle hole 12 mm | | 25 |
| 4210 042-000 | Stainless steel plate screw cylinder screw 4.8 x 15 mm (For fixing the top cover to the nylon bearing block). | | 100 |
| 4000 281-000 | Stainless steel nut M6, for nylon bearing block. | | 100 |
| 4460 008-001 | Alu bearing block for top cover 110, with plate, without screws | Silver anodized | 10 |
| 4000 270-000 | Stainless steel cylinder screw M6 x 12 mm (For fixing bearing block- plate and top cover on the alu bearing block). | | 100 |
| 4000 158-000 | Stainless steel plate screw countersunk Philips head M6 x 18 mm (For fixing the bearing block to the top cover support). | | 100 |
| 4460 017-000 | Precision bearing with dust seal, spindle hole 15 mm (For alu bearing block) | | 10 |
| 4460 020-080 | Nylon adapter bush from 15 to 12 mm, for precision bearing | | 100 |
| 4460 014-080 | Nylon patent bearing, spindle hole 12 mm, for alu bearing block. | | 100 |
| 4460 016-080 | Nylon square bearing, spindle hole 12 mm, for alu bearing block. | | 25 |

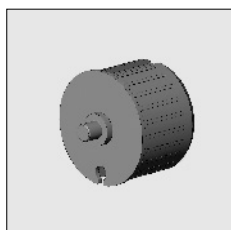
= Article will be sold out. Special orders remain possible.

Vista® Comfort 65/110

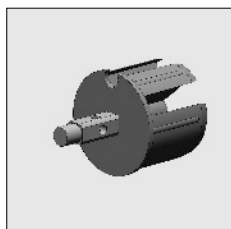
| Part number | Description | Paint finish | Length in m ¹ Pack. Unit |
|-------------|-------------|--------------|--|
|-------------|-------------|--------------|--|



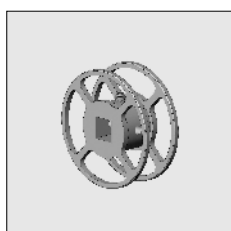
| | | | |
|--------------|---|--|----|
| 4470 030-080 | Nylon bearing roller bung 63, with spindle 12 mm | | 25 |
| 4469 060-068 | Alu (extruded) bearing roller bung 63, with spindle 12 mm | | |



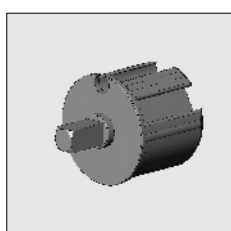
| | | | |
|--------------|--|------|----|
| 4470 082-000 | Nylon bearing roller bung 78, with spindle 12 x 12 mm, flange 5 mm | Grey | 10 |
| 4470 086-000 | Idem, with spindle 15 x 12 mm | Grey | 10 |



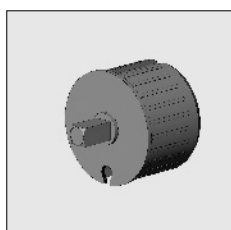
| | | | |
|--------------|--|--|--|
| 4469 068-068 | Nylon pulley roller bung 63, with spindle 12 mm | | |
| 4469 062-068 | Alu (extruded) pulley roller bung 63, with spindle 12 mm | | |
| 4469 078-068 | Alu pulley roller bung 78, with spindle 12 mm | | |



| | | | |
|--------------|---|--|--|
| 4469 070-068 | Alu (extruded) manual tape pulley 70 mm, used for pulley roller bung pin 4469 068/062/078-068 | | |
| 4469 074-068 | Alu (extruded) manual tape pulley 95 mm, used for pulley roller bung pin 4469 062/078-068 | | |



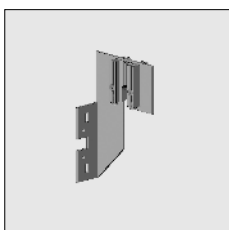
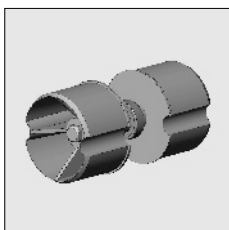
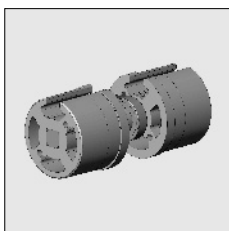
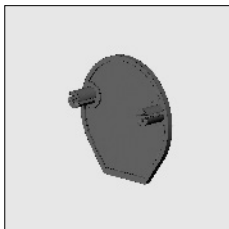
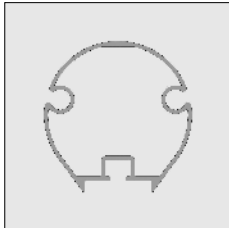
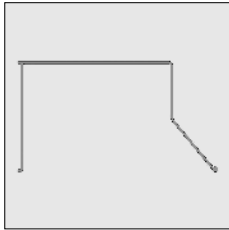
| | | | |
|--------------|---|--|----|
| 4470 032-080 | Nylon mono plug 63 with square spindle 13 x 25 mm | | 25 |
| 4469 066-068 | Alu (extruded) mono plug 63, with square spindle 13 x 25 mm | | |



| | | | |
|--------------|---|------|--|
| 4470 088-000 | Nylon mono plug 78, with square spindle 13 x 25 mm, flange 3 mm | Grey | |
| 4000 330-000 | Alu mono plug 78, with square spindle 13 x 30 mm, flange 3 mm | | |

= Article will be sold out. Special orders remain possible.

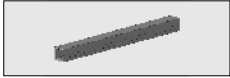
| Part number | Description | Paint finish | Length in m ¹ Pack. Unit |
|--------------|--|-----------------|--|
| 6296 172-016 | Alu top cover Comfort 65/110 | Silver anodized | 3.5 |
| 6296 180-016 | Idem | Silver anodized | 4.0 |
| 6296 179-016 | Idem | Silver anodized | 4.5 |
| 6296 178-016 | Idem | Silver anodized | 5.0 |
| 6296 177-016 | Idem | Silver anodized | 5.5 |
| 6296 176-016 | Idem | Silver anodized | 6.0 |
| 6296 173-016 | Idem | Silver anodized | 7.5 |
| 6296 567-000 | Alu senior roller 65 | Mill finish | 7.0 |
| 6296 555-016 | Alu senior roller 65 | Silver anodized | 4.0 |
| 6296 559-016 | Idem | Silver anodized | 5.0 |
| 6296 561-016 | Idem | Silver anodized | 5.5 |
| 6296 569-016 | Idem | Silver anodized | 7.5 |
| 4455 010-080 | Nylon end cap for senior roller 65, without screws | Black | 50 |
| 4452 080-000 | Stainless steel plate screw countersunk Philips head 4.2 x 16 mm, (For senior end cap senior roller). | | 100 |
| 4469 064-068 | Alu (extrusion) couple bearing with precision bearing for steel roller 63 | | |
| 4470 011-068 | Alu couple bearing with precision bearing for steel roller 78 | | |
| 4470 013-001 | Alu couple support 110 for couple bearing with bearing block and plate, right | Silver anodized | |
| 4470 014-001 | Idem, right | Silver anodized | |



= Article will be sold out. Special orders remain possible.

Vista® Comfort 65/110

| Part number | Description | Paint finish | Length in m ¹ Pack. Unit |
|-------------|-------------|--------------|--|
|-------------|-------------|--------------|--|



| | | | |
|--------------|---|-------------|--|
| 4455 036-068 | Alu joint piece for senior roller 65, length 50 cm. | Mill finish | |
|--------------|---|-------------|--|

- Further requirements:**
- Rollers refer to chapter 1
 - Drop arms, units and top sections refer to chapter 4H