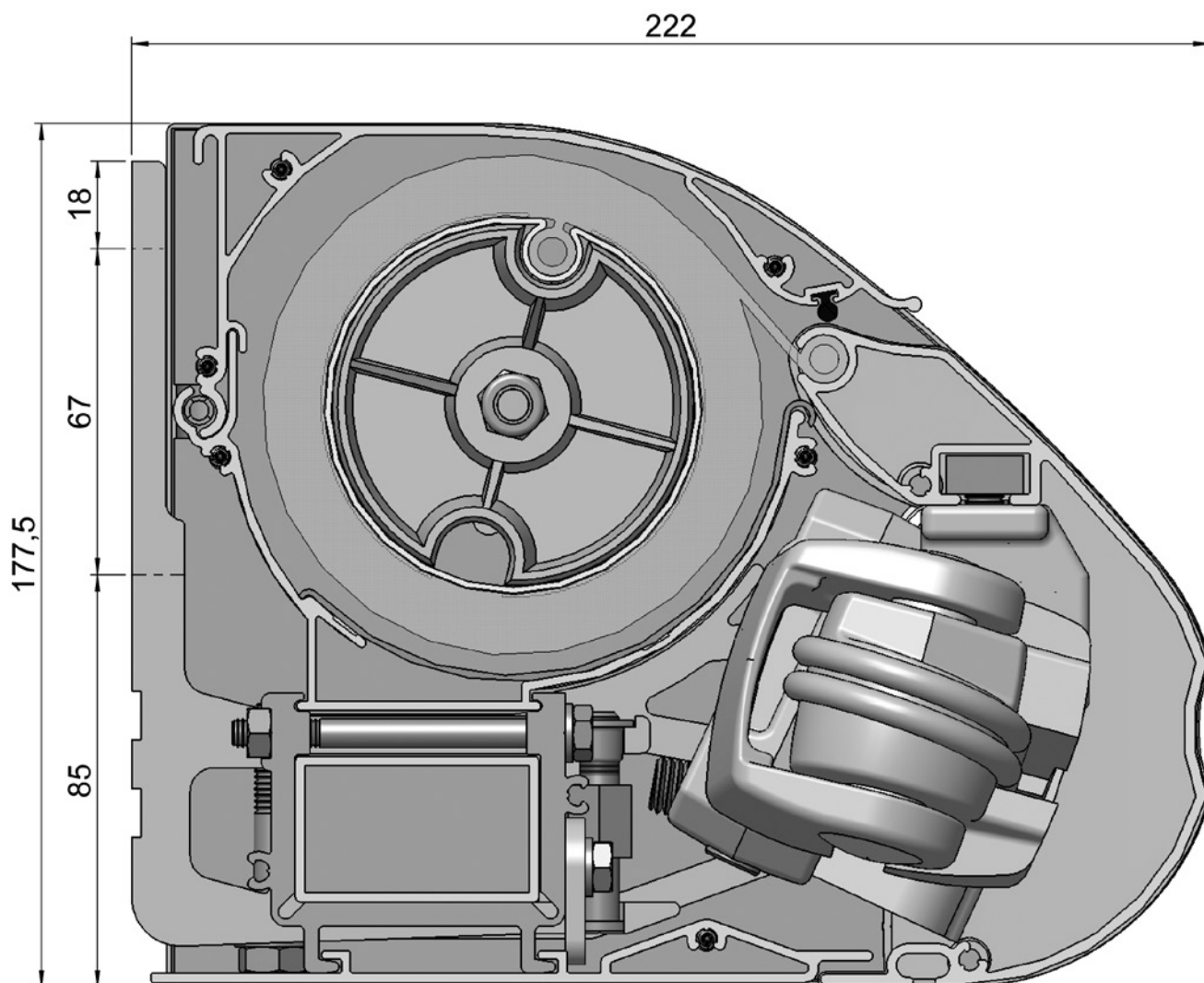
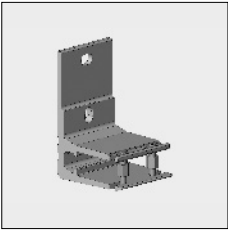
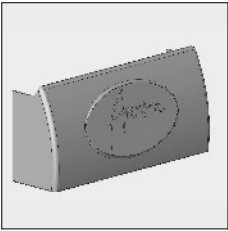
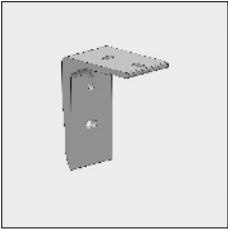
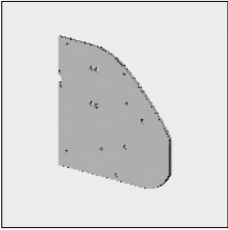


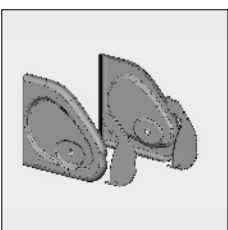




Senza® cassette

3



Part number	Description	Paint finish	Length in m ¹ Pack. Unit
	4212 210-090 Alu wall bracket Senza	Mill finish	
	4212 210-008 Idem	RAL 7035 light grey	
	4212 210-006 Idem	RAL 9010 pure white	
	4212 210-901 Idem	RAL 9001 cream	
	4210 210-755 Idem (* = Textured)	RAL 7016 anthracite grey*	
	4212 224-008 Nylon end cover for wall bracket	RAL 7035 light grey	
	4212 224-006 Idem	RAL 9010 pure white	
	4212 224-901 Idem	RAL 9001 cream	
	4212 224-716 Idem	RAL 7016 anthracite grey	
	4210 924-090 Alu ceiling bracket Senza	Mill finish	
	4210 924-001 Idem	Silver anodized	
	4210 924-006 Idem	RAL 9010 pure white	
	4210 924-901 Idem	RAL 9001 cream	
	4210 924-755 Idem (* = Textured)	RAL 7016 anthracite grey*	
	4212 240-090 Alu mounting plate Senza	Mill finish	
	4212 240-008 Idem	RAL 7035 light grey	
	4212 240-006 Idem	RAL 9010 pure white	
	4212 240-901 Idem	RAL 9001 cream	
	4212 240-755 Idem (* = Textured)	RAL 7016 anthracite grey*	
	4452 090-000 Stainless steel plate screw with Philips cylinder head 4.2 x 32 mm (For fixing the mounting plate to top cover and bottom cover, and roller support profile)		100
	4212 216-080 Nylon roller to guide the front profile (to fix on the mounting plate)		10
	4212 204-008 Nylon side covers kit Senza, consisting of side plates left (4212 200-...) and right (4212 202-...) and end caps front profile left (4212 220-...) and right (4212 222-...)	Grey	
	4212 204-006 Idem	White	
	4212 204-901 Idem	Cream	
	4212 204-716 Idem	Grey	
	4000 151-000 Stainless steel screw with countersunk Philips head M6 x 12 mm (For fixing the end cover to the mounting plate)		100
	4000 281-000 Stainless steel nut M6		100

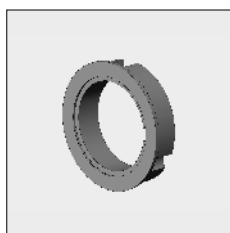
= Article will be sold out. Special orders remain possible.

Senza® cassette

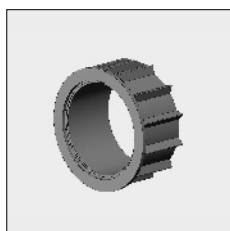
3

Part number	Description	Paint finish	Length in m ¹ Pack. Unit
4210 186-080	Transparent decal Fits in the recess of the end cover		2
4210 140-000	Plate screw with countersunk Philips head 4.2 x 22 mm (For fixing the end cap to the front profile)		100
4210 498-080	Steel bearing pin 12 mm with fixing plate	Zinc-plated	10
4000 171-000	Stainless steel tap bolt M6 x 10 mm (For fixing the bearing pin to the mounting plate)		100
4470 080-068	Nylon bearing roller bung 78 incl. bearing with increased inner ring	Grey	10
4470 090-000	Nylon bearing roller bung 85 with teflon inner ring with spindle hole 12 mm	Black	
4000 330-000	Alu mono plug 78, with square spindle 13 x 30 mm, flange 3 mm		50
4000 951-000	Somfy friction ring for motor series 50/60 for roller 85		

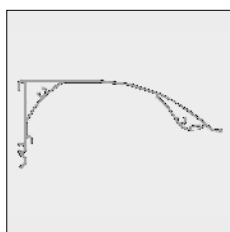
= Article will be sold out. Special orders remain possible.



4000 952-000 Adaptor for Somfy motor series 60 for roller 85



4000 953-000 Reducer for Somfy motor series 50 for roller 85 in combination with adaptor 4000 952-000



Top cover Senza length 7.5 m will, when sold out, be replaced through length 7.6 m (6294 216- ...)

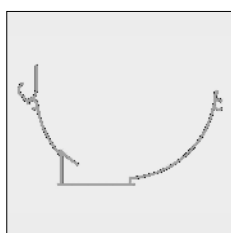
Part number	Description	Paint finish	Length in m ¹ Pack. Unit
6294 200-000	Alu top cover Senza	Mill finish	4.0
6294 204-000	Idem	Mill finish	5.0
6294 206-000	Idem	Mill finish	5.5
6294 208-000	Idem	Mill finish	6.0
6294 210-000	Idem	Mill finish	6.5
6294 212-000	Idem	Mill finish	7.0
6294 214-000	Idem	Mill finish	7.5
6294 200-016	Alu top cover Senza	Silver anodized	4.0
6294 202-016	# Idem	Silver anodized	4.5
6294 204-016	Idem	Silver anodized	5.0
6294 206-016	Idem	Silver anodized	5.5
6294 208-016	Idem	Silver anodized	6.0
6294 210-016	Idem	Silver anodized	6.5
6294 212-016	Idem	Silver anodized	7.0
6294 214-016	Idem	Silver anodized	7.5
6294 200-006	Alu top cover Senza	RAL 9010 pure white	4.0
6294 202-006	# Idem	RAL 9010 pure white	4.5
6294 204-006	Idem	RAL 9010 pure white	5.0
6294 206-006	Idem	RAL 9010 pure white	5.5
6294 208-006	Idem	RAL 9010 pure white	6.0
6294 210-006	Idem	RAL 9010 pure white	6.5
6294 212-006	Idem	RAL 9010 pure white	7.0
6294 214-006	Idem	RAL 9010 pure white	7.5
6294 200-901	Alu top cover Senza	RAL 9001 cream	4.0
6294 202-901	# Idem	RAL 9001 cream	4.5
6294 204-901	Idem	RAL 9001 cream	5.0
6294 206-901	Idem	RAL 9001 cream	5.5
6294 208-901	Idem	RAL 9001 cream	6.0
6294 210-901	Idem	RAL 9001 cream	6.5
6294 212-901	Idem	RAL 9001 cream	7.0
6294 214-901	Idem	RAL 9001 cream	7.5

= Article will be sold out. Special orders remain possible.

Part number	Description	Paint finish	Length in m ¹ Pack. Unit
6294 200-755	Alu top cover Senza (* = Textured)	RAL 7016 anthracite grey*	4.0
6294 204-755	Idem (* = Textured)	RAL 7016 anthracite grey*	5.0
6294 206-755	Idem (* = Textured)	RAL 7016 anthracite grey*	5.5
6294 208-755	Idem (* = Textured)	RAL 7016 anthracite grey*	6.0
6294 210-755	Idem (* = Textured)	RAL 7016 anthracite grey*	6.5
6294 212-755	Idem (* = Textured)	RAL 7016 anthracite grey*	7.0
6294 214-755	Idem (* = Textured)	RAL 7016 anthracite grey*	7.5
4211 130-080	Nylon sealing strip for top cover	Black	50
4211 132-080	Idem	White	50



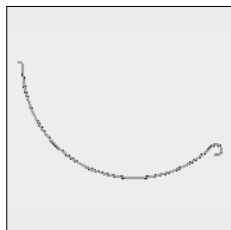
Roller support Senza length 7.5 m will, when sold out, be replaced through length 7.6 m (6294 276- ...)



6294 260-000	Alu roller support profile Senza	Mill finish	4.0
6294 264-000	Idem	Mill finish	5.0
6294 266-000	Idem	Mill finish	5.5
6294 268-000	Idem	Mill finish	6.0
6294 270-000	Idem	Mill finish	6.5
6294 272-000	Idem	Mill finish	7.0
6294 274-000	Idem	Mill finish	7.5
6294 260-016	Alu roller support profile Senza	Silver anodized	4.0
6294 262-016 #	Idem	Silver anodized	4.5
6294 264-016	Idem	Silver anodized	5.0
6294 266-016	Idem	Silver anodized	5.5
6294 268-016	Idem	Silver anodized	6.0
6294 270-016	Idem	Silver anodized	6.5
6294 272-016	Idem	Silver anodized	7.0
6294 274-016	Idem	Silver anodized	7.5
6294 260-006	Alu roller support profile Senza	RAL 9010 pure white	4.0
6294 262-006 #	Idem	RAL 9010 pure white	4.5
6294 264-006	Idem	RAL 9010 pure white	5.0
6294 266-006	Idem	RAL 9010 pure white	5.5
6294 268-006	Idem	RAL 9010 pure white	6.0
6294 270-006	Idem	RAL 9010 pure white	6.5
6294 272-006	Idem	RAL 9010 pure white	7.0
6294 274-006	Idem	RAL 9010 pure white	7.5
6294 260-901	Alu roller support profile Senza	RAL 9001 cream	4.0
6294 262-901 #	Idem	RAL 9001 cream	4.5
6294 264-901	Idem	RAL 9001 cream	5.0
6294 266-901	Idem	RAL 9001 cream	5.5
6294 268-901	Idem	RAL 9001 cream	6.0
6294 270-901	Idem	RAL 9001 cream	6.5
6294 272-901	Idem	RAL 9001 cream	7.0
6294 274-901	Idem	RAL 9001 cream	7.5

= Article will be sold out. Special orders remain possible.

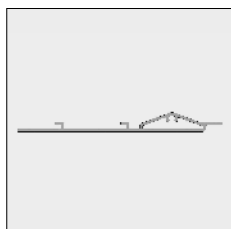
Part number	Description	Paint finish	Length in m ¹ Pack. Unit
6294 260-755	Alu roller support profile Senza (* = Textured)	RAL 7016 anthracite grey*	4.0
6294 264-755	Idem (* = Textured)	RAL 7016 anthracite grey*	5.0
6294 266-755	Idem (* = Textured)	RAL 7016 anthracite grey*	5.5
6294 268-755	Idem (* = Textured)	RAL 7016 anthracite grey*	6.0
6294 270-755	Idem (* = Textured)	RAL 7016 anthracite grey*	6.5
6294 272-755	Idem (* = Textured)	RAL 7016 anthracite grey*	7.0
6294 274-755	Idem (* = Textured)	RAL 7016 anthracite grey*	7.5
4210 315-000	Nylon fabric drain, incl. 2 adhesive-strips	Light grey	5.0



4000 229-000	Nylon fabric string 6 mm		200
--------------	--------------------------	--	-----

Note: After adjusting the top cover on the roller support profile, slide the fabric string into the slot, to connect the profiles.

Bottom cover Senza length 7.5 m will, when sold out, be replaced through length 7,6 m (6294 256-...)



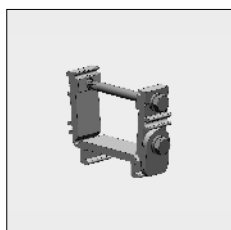
6294 240-000	Alu bottom cover Senza	Mill finish	4.0
6294 244-000	Idem	Mill finish	5.0
6294 246-000	Idem	Mill finish	5.5
6294 248-000	Idem	Mill finish	6.0
6294 250-000	Idem	Mill finish	6.5
6294 252-000	Idem	Mill finish	7.0
6294 254-000	Idem	Mill finish	7.5
6294 240-016	Alu bottom cover Senza	Silver anodized	4.0
6294 242-016 #	Idem	Silver anodized	4.5
6294 244-016	Idem	Silver anodized	5.0
6294 246-016	Idem	Silver anodized	5.5
6294 248-016	Idem	Silver anodized	6.0
6294 250-016	Idem	Silver anodized	6.5
6294 252-016	Idem	Silver anodized	7.0
6294 254-016	Idem	Silver anodized	7.5
6294 240-006	Alu bottom cover Senza	RAL 9010 pure white	4.0
6294 242-006 #	Idem	RAL 9010 pure white	4.5
6294 244-006	Idem	RAL 9010 pure white	5.0
6294 246-006	Idem	RAL 9010 pure white	5.5
6294 248-006	Idem	RAL 9010 pure white	6.0
6294 250-006	Idem	RAL 9010 pure white	6.5
6294 252-006	Idem	RAL 9010 pure white	7.0
6294 254-006	Idem	RAL 9010 pure white	7.5

= Article will be sold out. Special orders remain possible.

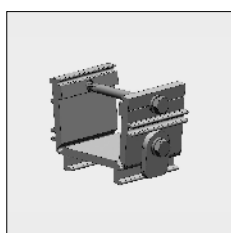
Senza® cassette

3

Part number	Description	Paint finish	Length in m ¹ Pack. Unit
6294 240-901	Alu bottom cover Senza	RAL 9001 cream	4.0
6294 242-901	# Idem	RAL 9001 cream	4.5
6294 244-901	Idem	RAL 9001 cream	5.0
6294 246-901	Idem	RAL 9001 cream	5.5
6294 248-901	Idem	RAL 9001 cream	6.0
6294 250-901	Idem	RAL 9001 cream	6.5
6294 252-901	Idem	RAL 9001 cream	7.0
6294 254-901	Idem	RAL 9001 cream	7.5
6294 240-755	Alu bottom cover Senza (* = Textured)	RAL 7016 anthracite grey*	4.0
6294 244-755	Idem (* = Textured)	RAL 7016 anthracite grey*	5.0
6294 246-755	Idem (* = Textured)	RAL 7016 anthracite grey*	5.5
6294 248-755	Idem (* = Textured)	RAL 7016 anthracite grey*	6.0
6294 250-755	Idem (* = Textured)	RAL 7016 anthracite grey*	6.5
6294 252-755	Idem (* = Textured)	RAL 7016 anthracite grey*	7.0
6294 254-755	Idem (* = Textured)	RAL 7016 anthracite grey*	7.5



4212 244-090	Alu bracket 20 mm for fixing the roller support profile and the bottom cover to the square bar (1 piece per 120 cm max.)	Mill finish	10
4212 244-008	Idem	RAL 7035 light grey	10
4212 244-006	Idem	RAL 9010 pure white	10
4212 244-901	Idem	RAL 9001 cream	10
4212 244-755	Idem (* = Textured)	RAL 7016 anthracite grey*	10

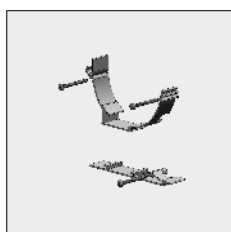


4212 246-090	Alu bracket 50 mm for fixing roller support profile and bottom cover to the square bar.	Mill finish	10
4212 246-008	Idem	RAL 7035 light grey	10
4212 246-006	Idem	RAL 9010 pure white	10
4212 246-901	Idem	RAL 9001 cream	10
4212 246-755	Idem (* = Textured)	RAL 7016 anthracite grey*	10

Note: Place the alu bracket 50 mm left and right and fasten them also to the mounting plate with stainless steel plate screw 4.2 x 32 mm, 4452 090-000.

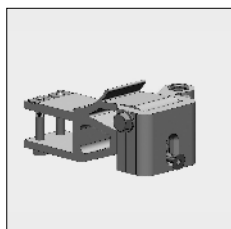
For Senza use only the gear boxes 4210 569-000 or 4000 476/477-000 (refer to chapter 9A).

**When using gear boxes:
Apply the gear boxes only to awnings with 2 arms (a pair)**



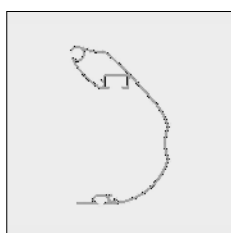
4212 250-001	Alu roller support profile/bottom cover- spaces, left	Silver anodized	
4212 252-001	Idem, right	Silver anodized	
4212 250-006	Alu roller support profile/bottom cover- spaces, left	RAL 9010 pure white	
4212 252-006	Idem, right	RAL 9010 pure white	
4212 252-901	Alu roller support profile/bottom cover- spaces, right	RAL 9001 cream	

= Article will be sold out. Special orders remain possible.



Part number	Description	Paint finish	Length in m ¹ Pack. Unit
4212 234-090	Alu arm connection Senza, left	Mill finish	
4212 236-090	Idem, right	Mill finish	
4212 234-008	Alu arm connection Senza, left	RAL 7035 light grey	
4212 236-008	Idem, right	RAL 7035 light grey	
4212 234-006	Alu arm connection Senza, left	RAL 9010 pure white	
4212 236-006	Idem, right	RAL 9010 pure white	
4212 234-901	Alu arm connection Senza, left	RAL 9001 cream	
4212 236-901	Idem, right	RAL 9001 cream	
4212 234-755	Alu arm connection Senza, left (* = Textured)	RAL 7016 anthracite grey*	
4212 236-755	Idem, right (* = Textured)	RAL 7016 anthracite grey*	

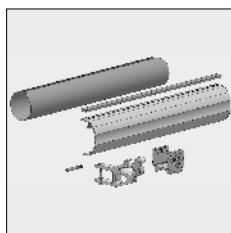
Front profile Senza length 7.5 m will, when sold out, be replaced through length 7,6 m (6294 296- ...)



6294 280-000	Alu front profile Senza	Mill finish	4.0
6294 284-000	Idem	Mill finish	5.0
6294 286-000	Idem	Mill finish	5.5
6294 288-000	Idem	Mill finish	6.0
6294 290-000	Idem	Mill finish	6.5
6294 292-000	Idem	Mill finish	7.0
6294 294-000	Idem	Mill finish	7.5
6294 280-016	Alu front profile Senza	Silver anodized	4.0
6294 282-016	# Idem	Silver anodized	4.5
6294 284-016	Idem	Silver anodized	5.0
6294 286-016	Idem	Silver anodized	5.5
6294 288-016	Idem	Silver anodized	6.0
6294 290-016	Idem	Silver anodized	6.5
6294 292-016	Idem	Silver anodized	7.0
6294 294-016	Idem	Silver anodized	7.5
6294 280-006	Alu front profile Senza	RAL 9010 pure white	4.0
6294 282-006	# Idem	RAL 9010 pure white	4.5
6294 284-006	Idem	RAL 9010 pure white	5.0
6294 226-006	Idem	RAL 9010 pure white	5.5
6294 288-006	Idem	RAL 9010 pure white	6.0
6294 290-006	Idem	RAL 9010 pure white	6.5
6294 292-006	Idem	RAL 9010 pure white	7.0
6294 294-006	Idem	RAL 9010 pure white	7.5

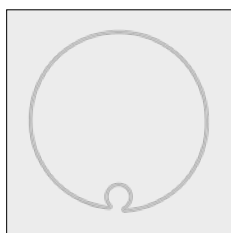
= Article will be sold out. Special orders remain possible.

Part number	Description	Paint finish	Length in m ¹ Pack. Unit
6294 280-901	Alu front profile Senza	RAL 9001 cream	4.0
6294 282-901	# Idem	RAL 9001 cream	4.5
6294 284-901	Idem	RAL 9001 cream	5.0
6294 286-901	Idem	RAL 9001 cream	5.5
6294 288-901	Idem	RAL 9001 cream	6.0
6294 290-901	Idem	RAL 9001 cream	6.5
6294 292-901	Idem	RAL 9001 cream	7.0
6294 294-901	Idem	RAL 9001 cream	7.5
6294 280-755	Alu front profile Senza (* = Textured)	RAL 7016 anthracite grey*	4.0
6294 284-755	Idem (* = Textured)	RAL 7016 anthracite grey*	5.0
6294 286-755	Idem (* = Textured)	RAL 7016 anthracite grey*	5.5
6294 288-755	Idem (* = Textured)	RAL 7016 anthracite grey*	6.0
6294 290-755	Idem (* = Textured)	RAL 7016 anthracite grey*	6.5
6294 292-755	Idem (* = Textured)	RAL 7016 anthracite grey*	7.0
6294 294-755	Idem (* = Textured)	RAL 7016 anthracite grey*	7.5



4212 212-001	Joint kit Senza for steel roller 78, front profile, top cover, roller support profile, bottom cover and support roller	Silver anodized	
4212 212-006	Idem	RAL 9010 pure white	
4212 212-901	Idem	RAL 9001 cream	
4212 212-755	Idem (* = Textured)	RAL 7016 anthracite grey*	

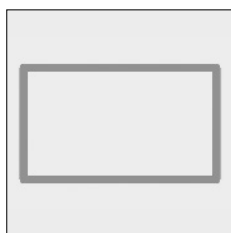
Steel roller 85 with ROUND special fabric groove:



6253 382-000	Steel roller 85 x 1.25 mm	Zinc-plated	4.0
6253 384-000	Idem	Zinc-plated	4.5
6253 386-000	Idem	Zinc-plated	5.0
6253 390-000	Idem	Zinc-plated	6.0
6253 392-000	Idem	Zinc-plated	6.5
6253 394-000	Idem	Zinc-plated	7.0
6253 396-000	Idem	Zinc-plated	7.5
6253 382-008	Steel roller 85 x 1.25 mm	RAL 7035 light grey	4.0
6253 384-008	Idem	RAL 7035 light grey	4.5
6253 386-008	Idem	RAL 7035 light grey	5.0
6253 390-008	Idem	RAL 7035 light grey	6.0
6253 392-008	Idem	RAL 7035 light grey	6.5
6253 394-008	Idem	RAL 7035 light grey	7.0
6253 396-008	Idem	RAL 7035 light grey	7.5

= Article will be sold out. Special orders remain possible.

Part number	Description	Paint finish	Length in m ¹ Pack. Unit
-------------	-------------	--------------	--



Steel square bar 50 x 30 mm:

6253 136-000	Steel square bar 50 x 30 x 2 mm	Zinc-plated	4.0
6253 138-000	# Idem	Zinc-plated	4.5
6253 140-000	Idem	Zinc-plated	5.0
6253 142-000	Idem	Zinc-plated	5.5
6253 144-000	Idem	Zinc-plated	6.0
6253 145-000	Idem	Zinc-plated	6.5
6253 146-000	Idem	Zinc-plated	7.0
6253 148-000	Idem	Zinc-plated	7.5

6253 136-008	Steel square bar 50 x 30 x 2 mm	RAL 7035 light grey	4.0
6253 138-008	# Idem	RAL 7035 light grey	4.5
6253 140-008	Idem	RAL 7035 light grey	5.0
6253 142-008	Idem	RAL 7035 light grey	5.5
6253 144-008	Idem	RAL 7035 light grey	6.0
6253 145-008	Idem	RAL 7035 light grey	6.5
6253 146-008	Idem	RAL 7035 light grey	7.0
6253 148-008	Idem	RAL 7035 light grey	7.5

6253 136-006	Steel square bar 50 x 30 x 2 mm	RAL 9010 pure white	4.0
6253 138-006	# Idem	RAL 9010 pure white	4.5
6253 140-006	Idem	RAL 9010 pure white	5.0
6253 142-006	Idem	RAL 9010 pure white	5.5
6253 144-006	Idem	RAL 9010 pure white	6.0
6253 145-006	Idem	RAL 9010 pure white	6.5
6253 146-006	Idem	RAL 9010 pure white	7.0
6253 148-006	Idem	RAL 9010 pure white	7.5

6253 136-901	Steel square bar 50 x 30 x 2 mm	RAL 9001 cream	4.0
6253 138-901	# Idem	RAL 9001 cream	4.5
6253 140-901	Idem	RAL 9001 cream	5.0
6253 142-901	Idem	RAL 9001 cream	5.5
6253 144-901	Idem	RAL 9001 cream	6.0
6253 145-901	Idem	RAL 9001 cream	6.5
6253 146-901	Idem	RAL 9001 cream	7.0
6253 148-901	Idem	RAL 9001 cream	7.5

6253 136-755	Steel square bar 50 x 30 x 2 mm (* = Textured)	RAL 7016 anthracite grey*	4.0
6253 140-755	Idem (* = Textured)	RAL 7016 anthracite grey*	5.0
6253 142-755	Idem (* = Textured)	RAL 7016 anthracite grey*	5.5
6253 144-755	Idem (* = Textured)	RAL 7016 anthracite grey*	6.0
6253 145-755	Idem (* = Textured)	RAL 7016 anthracite grey*	6.5
6253 146-755	Idem (* = Textured)	RAL 7016 anthracite grey*	7.0
6253 148-755	Idem (* = Textured)	RAL 7016 anthracite grey*	7.5

Further requirements:
 - Rollers refer to chapter 1
 - Multipurpose folding arms and accessories refer to chapter 2

= Article will be sold out. Special orders remain possible.

