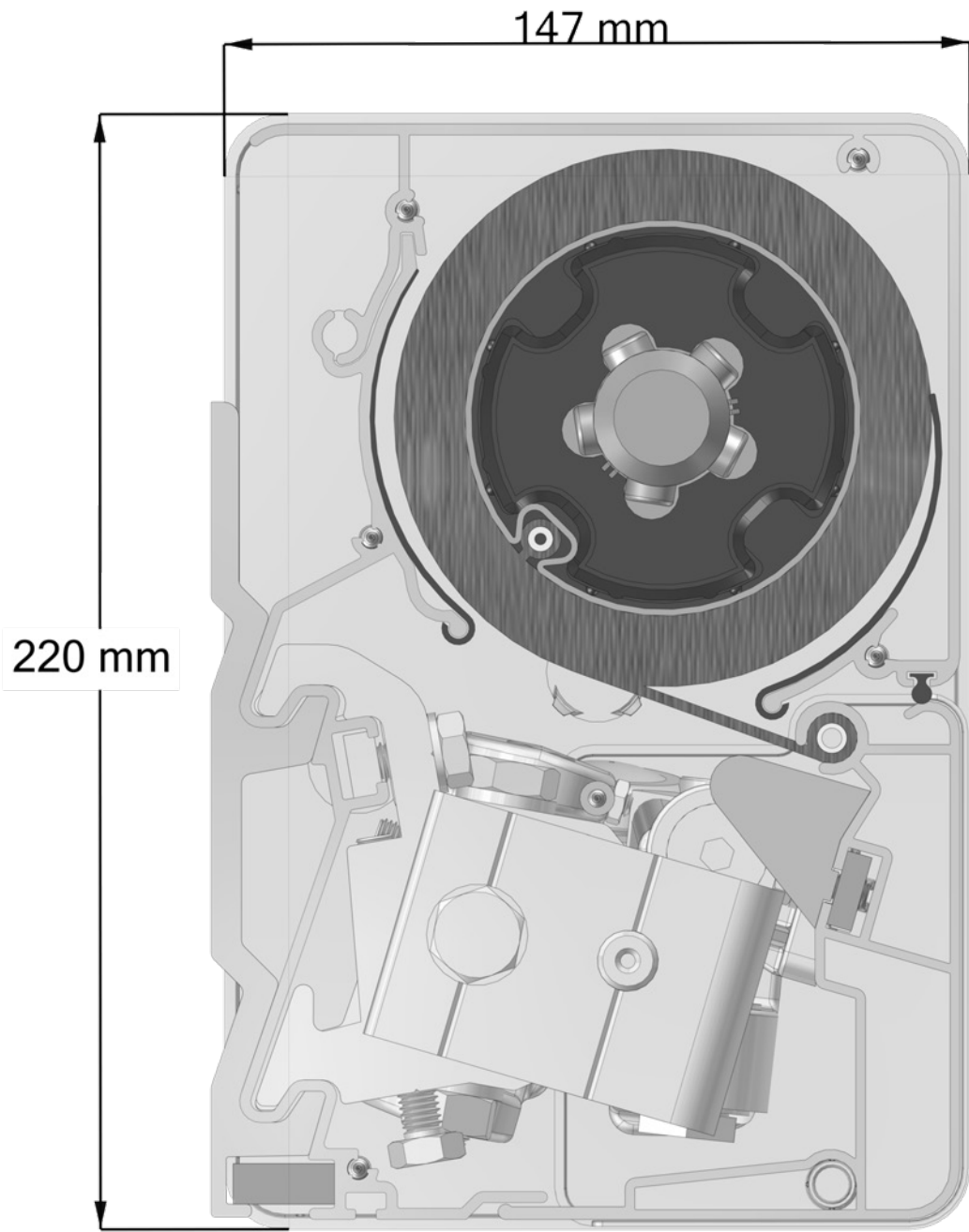
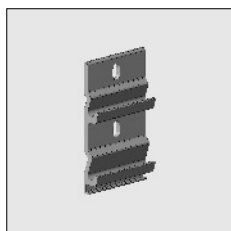


# JdB cassette

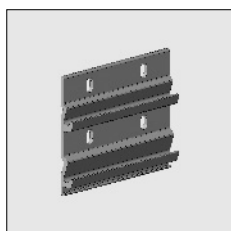
3



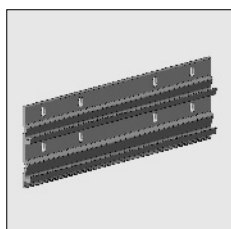
Part number	Description	Paint finish	Length in m <sup>1</sup> Pack. unit
-------------	-------------	--------------	--



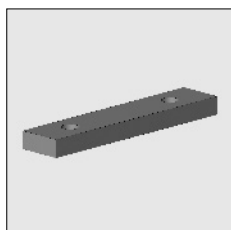
4211 424-000	Alu wall bracket JdB 95 mm	Mill finish	
4211 424-006	Idem	RAL 9010 pure white	
4211 424-755	Idem (* = Textured)	RAL 7016 anthracite grey*	
4211 424-900	Idem (* = Textured)	RAL 9005 jet black*	



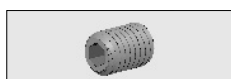
4211 420-000	Alu wall bracket JdB 195 mm	Mill finish	
4211 420-006	Idem	RAL 9010 pure white	
4211 420-755	Idem (* = Textured)	RAL 7016 anthracite grey*	
4211 420-900	Idem (* = Textured)	RAL 9005 jet black*	



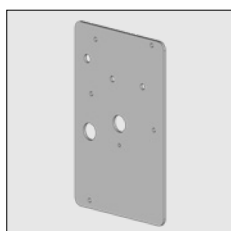
4211 421-006	Alu wall bracket JdB 500 mm	RAL 9010 pure white	
4211 421-755	Idem (* = Textured)	RAL 7016 anthracite grey*	



4211 426-000	Stainless steel clamp strip for wall- and ceiling brackets	Mill finish	
4211 426-006	Idem	RAL 9010 pure white	
4211 426-755	Idem (* = Textured)	RAL 7016 anthracite grey*	
4211 426-900	Idem (* = Textured)	RAL 9005 jet black*	



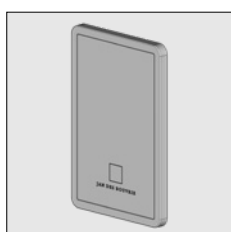
4410 696-000	Stainless steel socket-head adjusting screw M8 x 12 mm for clamp strip		100
--------------	--	--	-----



4211 390-000	Alu mounting plate JdB	Mill finish	
4211 390-006	Idem	RAL 9010 pure white	
4211 390-755	Idem (* = Textured)	RAL 7016 anthracite grey*	
4211 390-900	Idem (* = Textured)	RAL 9005 jet black*	



4452 090-000	Stainless steel cross screw 4,2 x 32 MM cylinder screw (For fixing the mounting plate to the Top and rear cover)		100
--------------	--	--	-----



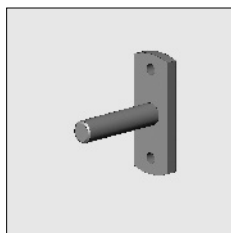
4211 392-006	Nylon end cover JdB	White	
4211 392-755	Idem	Anthracite grey	
4211 392-900	Idem	Black	

**For fixing the nylon end cover with Stainless steel screw vk/kk M6x16 (4000 154-000) and flat nut M6 (4000 282-000).**

# = Article will be sold out. Special orders remain possible.

## JdB cassette

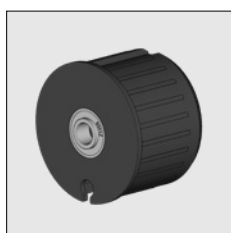
3



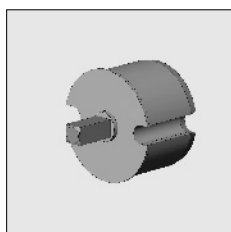
Part number	Description	Paint finish	Length in m <sup>1</sup> Pack. unit
4210 498-080	Steel bearing pin 12 mm with fixing plate	Zinc-plated	10



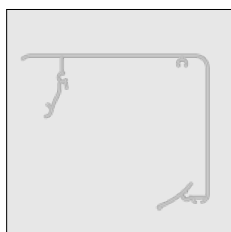
4000 171-000	Stainless steel stud bolt M6 x 10 mm (For fixing the bearing pin to the mounting plate)		100
--------------	--	--	-----



4470 080-068	Nylon bearing roller bung 78 incl. bearing with increased inner ring	Grey	10
--------------	--	------	----



4000 330-000	Alu mono plug 78, with square spindle 13 x 30 mm, flange 3 mm		
--------------	---	--	--




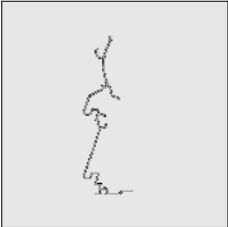
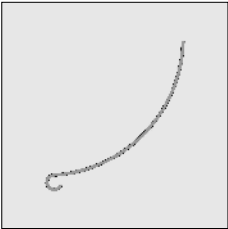

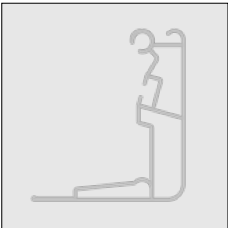
6293 400-000	Alu top cover JdB	Mill finish	4.0
6293 404-000	Idem	Mill finish	5.0
6293 410-000	Idem	Mill finish	6.5

6293 400-006	Alu top cover JdB	RAL 9010 pure white	4.0
6293 404-006	Idem	RAL 9010 pure white	5.0
6293 406-006	Idem	RAL 9010 pure white	5.5
6293 408-006	Idem	RAL 9010 pure white	6.0
6293 410-006	Idem	RAL 9010 pure white	6.5

6293 400-755	Alu top cover JdB (* = Textured)	RAL 7016 anthracite grey*	4.0
6293 404-755	Idem	RAL 7016 anthracite grey*	5.0
6293 406-755	Idem	RAL 7016 anthracite grey*	5.5
6293 408-755	Idem	RAL 7016 anthracite grey*	6.0
6293 410-755	Idem	RAL 7016 anthracite grey*	6.5

6293 400-900	Alu top cover JdB (* = Textured)	RAL 9005 jet black*	4.0
6293 404-900	Idem	RAL 9005 jet black*	5.0
6293 408-900	Idem	RAL 9005 jet black*	6.0
6293 410-900	Idem	RAL 9005 jet black*	6.5

# = Article will be sold out. Special orders remain possible.

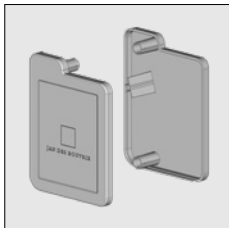
Part number	Description	Paint finish	Length in m <sup>1</sup> Pack. unit
	4211 130-080 Nylon sealing strip for top cover	Black	50
	4211 132-080 Idem	Bright white	50
	6293 240-000 Alu rear cover JdB	Mill finish	4.0
	6293 244-000 Idem	Mill finish	5.0
	6293 250-000 Idem	Mill finish	6.5
	6293 240-006 Alu rear cover JdB	RAL 9010 pure white	4.0
	6293 244-006 Idem	RAL 9010 pure white	5.0
	6293 246-006 Idem	RAL 9010 pure white	5.5
	6293 248-006 Idem	RAL 9010 pure white	6.0
	6293 250-006 Idem	RAL 9010 pure white	6.5
	6293 240-755 Alu rear cover JdB (* = Textured)	RAL 7016 anthracite grey*	4.0
	6293 244-755 Idem	RAL 7016 anthracite grey*	5.0
	6293 246-755 Idem	RAL 7016 anthracite grey*	5.5
	6293 248-755 Idem	RAL 7016 anthracite grey*	6.0
6293 250-755 Idem	RAL 7016 anthracite grey*	6.5	
6293 240-900 Alu rear cover JdB (* = Textured)	RAL 9005 jet black*	4.0	
6293 244-900 Idem	RAL 9005 jet black*	5.0	
6293 248-900 Idem	RAL 9005 jet black*	6.0	
6293 250-900 Idem	RAL 9005 jet black*	6.5	
	4211 440-000 Nylon insert drain, incl. 2 adhesive strips (to be placed in top and rear cover)	Light grey	5.0
	4000 213-000 Nylon fabric string 6 mm		200
<b>After hooking in the top onto the rear cover, slide the fabric string in to the slot to connect the profiles.</b>			
	6293 420-000 Alu front profile JdB	Mill finish	4.0
	6293 424-000 Idem	Mill finish	5.0
	6293 430-000 Idem	Mill finish	6.5
	6293 420-006 Alu front profile JdB	RAL 9010 pure white	4.0
	6293 424-006 Idem	RAL 9010 pure white	5.0
	6293 426-006 Idem	RAL 9010 pure white	5.5
	6293 428-006 Idem	RAL 9010 pure white	6.0
	6293 430-006 Idem	RAL 9010 pure white	6.5
	6293 420-755 Alu front profile JdB (* = Textured)	RAL 7016 anthracite grey*	4.0
	6293 424-755 Idem	RAL 7016 anthracite grey*	5.0

# = Article will be sold out. Special orders remain possible.

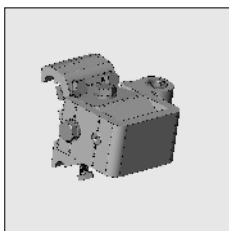
# JdB cassette

3

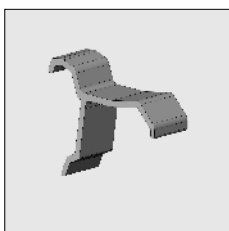
Part number	Description	Paint finish	Length in m <sup>1</sup> Pack. unit
6293 426-755	Idem	RAL 7016 anthracite grey*	5.5
6293 428-755	Idem	RAL 7016 anthracite grey*	6.0
6293 430-755	Idem	RAL 7016 anthracite grey*	6.5
6293 420-900	Alu front profile JdB (* = Textured)	RAL 9005 jet black*	4.0
6293 424-900	Idem	RAL 9005 jet black*	5.0
6293 428-900	Idem	RAL 9005 jet black*	6.0
6293 430-900	Idem	RAL 9005 jet black*	6.5



4211 396-006	Alu end cap front profile and filling piece, left	White	
4211 398-006	Idem, right	White	
4211 396-755	Alu end cap front profile and filling piece, left	Anthracite grey	
4211 398-755	Idem, right	Anthracite grey	
4211 396-900	Alu end cap front profile and filling piece, left	Black	
4211 398-900	Idem, right	Black	



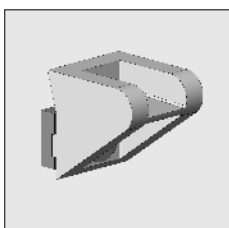
4211 470-090	Alu arm connection JdB, left	Mill finish	
4211 472-090	Idem, right	Mill finish	
4211 470-006	Alu arm connection JdB, left	RAL 9010 pure white	
4211 472-006	Idem, right	RAL 9010 pure white	
4211 470-755	Alu arm connection JdB, left (* = Textured)	RAL 7016 anthracite grey*	
4211 472-755	Idem, right	RAL 7016 anthracite grey*	
4211 470-900	Alu arm connection JdB, left (* = Textured)	RAL 9005 jet black*	
4211 472-900	Idem, right	RAL 9005 jet black*	



4211 416-090	Alu support for guiding the front profile excl. socket-head bolt 4410 238-000	Mill finish	
4211 416-006	Idem, including socket-head bolt	RAL 9010 pure white	
4211 416-755	Idem, including socket-head bolt	RAL 7016 anthracite grey*	
4211 416-900	Idem, including socket-head bolt	RAL 9005 jet black*	

### ATTENTION!!

With every folding arm awning use three separate guiding supports. Next to the two arm connections a guiding support and one in the centre of the awning.



4211 418-000	Nylon guide plate (position in the front profile across from the guiding supports)	White	10
4211 419-000	Idem	Black	10

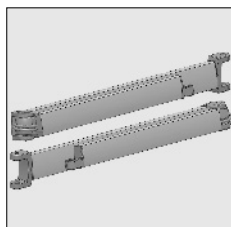
# = Article will be sold out. Special orders remain possible.

Part number	Description	Paint finish	Length in m <sup>1</sup> Pack. unit
-------------	-------------	--------------	--

**G-Plus (PVC-coated double cables)**  
Suitable for all folding arm awnings with a max. fabric surface of 16.5 M<sup>2</sup>.

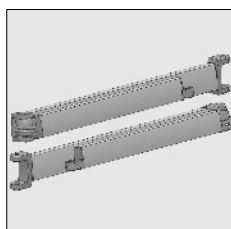
**Particulars:**  
- Fork of forged aluminium at 250 cm and 300 cm projection  
- Finished with smooth profile

**Projection 150 cm**  
Arm size\* in closed position: 85.5 cm



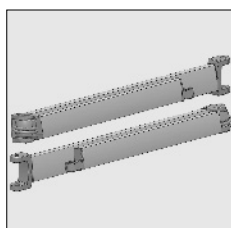
4300 000-006	Folding arm G-Plus, with grey powder coated cast parts, per pair	RAL 9010 pure white
--------------	--	---------------------

**Projection 200 cm**  
Arm size\* in closed position: 114 cm



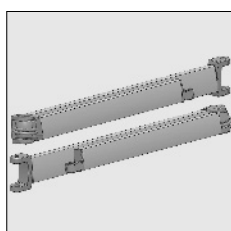
4300 002-006	Folding arm G-Plus, with grey powder coated cast parts, per pair	RAL 9010 pure white
4300 002-755	Idem (*= Textured)	RAL 7016 anthracite grey*

**Projection 250 cm**  
Arm size\* in closed position: 142.5 cm;



4300 004-006	Folding arm G-Plus, with grey powder coated cast parts, per pair	RAL 9010 pure white
4300 004-755	Idem (*= Textured)	RAL 7016 anthracite grey*
4300 006-006	Folding arm G-Plus, with <b>equal sections</b> , per pair	RAL 9010 pure white

**Projection 300 cm**  
Arm size\* in closed position: 171 cm;



4300 008-006	Folding arm G-Plus, per pair	RAL 9010 pure white
4300 008-755	Idem (*= Textured)	RAL 7016 anthracite grey*
4300 010-006	Folding arm G-Plus, with <b>equal sections</b> , per pair	RAL 9010 pure white



4210 615-000	Stainless steel eccentric arm connector pin for folding arms G-Plus and M-plus	10
--------------	--	----

# = Article will be sold out. Special orders remain possible.

# JdB cassette

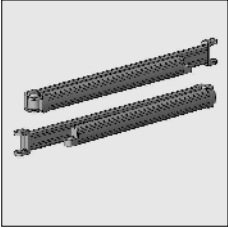
3

Part number	Description	Paint finish	Length in m <sup>1</sup> Pack. unit
-------------	-------------	--------------	--

**M-Plus (PVC-coated double cables)**  
Suitable for all folding arm awnings.

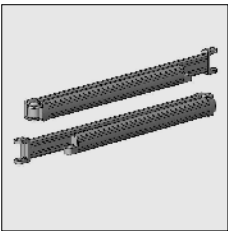
**Particulars:**  
- Fork of forged aluminium (extra strong).  
- Both arm parts are made of reinforced ribbed profile the rear part is extra thick.

**Projection 150 cm**  
Arm size\* in closed position: 85.5 cm



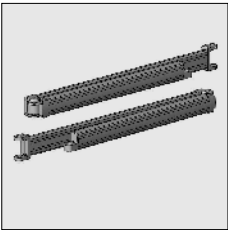
4300 100-006	Folding arm M-Plus, per pair	RAL 9010 pure white	
4300 100-755	Idem (*= Textured)	RAL 7016 anthracite grey*	

**Projection 200 cm**  
Arm size\* in closed position: 114 cm



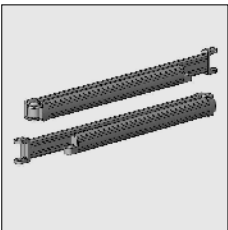
4300 102-006	Folding arm M-Plus, per pair	RAL 9010 pure white	
4300 102-755	Idem (*= Textured)	RAL 7016 anthracite grey*	
4300 102-900	Idem (*= Textured)	RAL 9005 jet black*	

**Projection 250 cm**  
Arm size\* in closed position: 142.5 cm.



4300 104-006	Folding arm M-Plus, per pair	RAL 9010 pure white	
4300 104-755	Idem (*= Textured)	RAL 7016 anthracite grey*	
4300 104-900	Idem (*= Textured)	RAL 9005 jet black*	
4300 106-006	Folding arm M-Plus, with <b>equal sections</b> , per pair	RAL 9010 pure white	
4300 106-755	Idem (*= Textured)	RAL 7016 anthracite grey*	

**Projection 300 cm**  
Arm size\* in closed position: 171 cm.



4300 108-006	Folding arm M-Plus, per pair	RAL 9010 pure white	
4300 108-755	Idem (*= Textured)	RAL 7016 anthracite grey*	
4300 108-900	Idem (*= Textured)	RAL 9005 jet black*	
4300 110-006	Folding arm M-Plus, with <b>equal sections</b> , per pair	RAL 9010 pure white	
4300 110-755	Idem (*= Textured)	RAL 7016 anthracite grey*	

\* = arm size is measured from the centre of the mounting point for the arm connection.

**Projection 350 cm EXTRA STRONG**  
Extra reinforced profiles and with double springs.  
The fork of the centre hinge is also of forged aluminium.  
Only applicable for the Oliva and Senza Carino with a upper tube of 78 mm.  
Arm size\* in closed position: 183 cm



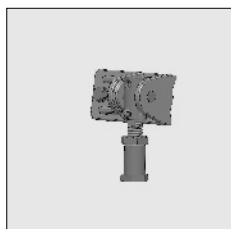
4300 114-006	Folding arm M-Plus, per pair	RAL 9010 pure white	
4300 114-755	Idem (*= Textured)	RAL 7016 anthracite grey*	
4300 714-900	Idem (*= Textured)	RAL 9005 jet black*	

\* = arm size is measured from the centre of the mounting point for the arm connection.

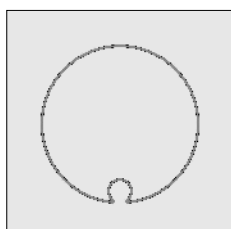
**ATTENTION !!**  
Folding arms which are powder coated A SECOND TIME are not covered by the warranty, since the glue and springs may be damaged due to the high temperature during the powder coating process!

# = Article will be sold out. Special orders remain possible.



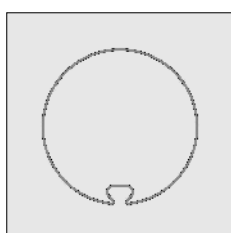


Part number	Description	Paint finish	Length in m <sup>1</sup> Pack. unit
4211 041-000	Alu front profile connector for JdB, left	Mill finish	
4211 043-000	Idem, right	Mill finish	
4211 041-006	Alu front profile connector for JdB, left	RAL 9010 pure white	
4211 043-006	Idem, right	RAL 9010 pure white	
4211 041-755	Alu front profile connector for JdB, left (* = Textured)	RAL 7016 anthracite grey*	
4211 043-755	Idem, right (* = Textured)	RAL 7016 anthracite grey*	
4211 041-900	Alu front profile connector for JdB, left (* = Textured)	RAL 9005 jet black*	
4211 043-900	Idem, right	RAL 9005 jet black*	



### Steel roller 78 with ROUND groove:

6253 078-000	Steel roller 78 x 1.25 mm	zinc-plated	4.0
6253 079-000	Idem	zinc-plated	4,5
6253 080-000	Idem	zinc-plated	5.0
6253 081-000	Idem	zinc-plated	5.5
6253 083-000	Idem	zinc-plated	6.0
6253 084-000	Idem	zinc-plated	6.5
6253 086-000	Idem	zinc-plated	7,0
6253 087-000	Idem	zinc-plated	7,5
6253 083-006	Steel roller 78 x 1.25 mm	RAL 9010 pure white	6.0
6253 087-006	Idem	RAL 9010 pure white	7,5



### Steel roller 78 with FLAT groove:

6253 190-000	Steel roller 78 x 1.25 mm	zinc-plated	4.0
6253 191-000	Idem	zinc-plated	4,5
6253 192-000	Idem	zinc-plated	5.0
6253 193-000	Idem	zinc-plated	5.5
6253 194-000	Idem	zinc-plated	6.0
6253 195-000	Idem	zinc-plated	6.5
6253 196-000	Idem	zinc-plated	7,0
6253 197-000	Idem	zinc-plated	7,5

# = Article will be sold out. Special orders remain possible.

