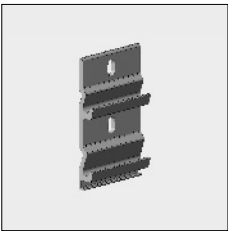
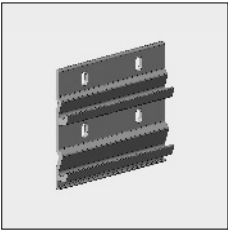
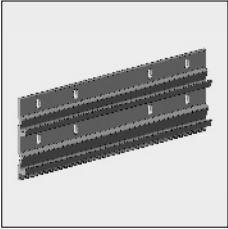
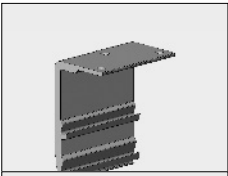
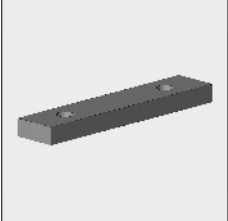

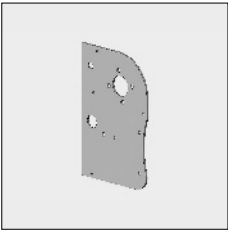

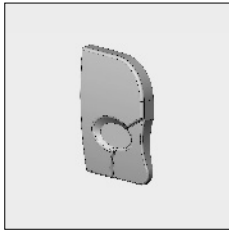


Part number	Description	Paint finish	Length in m <sup>1</sup> Pack. unit
	4211 424-000	Alu wall bracket 95 mm	Mill finish
	4211 424-008	Idem	RAL 7035 light grey
	4211 424-006	Idem	RAL 9010 pure white
	4211 424-901	Idem	RAL 9001 cream
	4211 420-000	Alu wall bracket 195 mm	Mill finish
	4211 420-008	Idem	RAL 7035 light grey
	4211 420-006	Idem	RAL 9010 pure white
	4211 420-901	Idem	RAL 9001 cream
	4211 421-008	Alu wall bracket 500 mm	RAL 7035 light grey
	4211 421-006	Idem	RAL 9010 pure white
	4211 421-901	Idem	RAL 9001 cream
	4211 446-090	Alu ceiling bracket 200 mm	Mill finish
	4211 426-000	Stainless steel clamp strip for wall- and ceiling brackets	Mill finish
	4211 426-008	Idem	RAL 7035 light grey
	4211 426-006	Idem	RAL 9010 pure white
	4211 426-901	Idem	RAL 9001 cream
	4410 696-000	Stainless steel socket-head adjusting screw M8 x 12 mm for clamp strip	100
	4211 400-000	Alu mounting plate	Mill finish
	4211 400-008	Idem	RAL 7035 light grey
	4211 400-006	Idem	RAL 9010 pure white
	4211 400-901	Idem	RAL 9001 cream
	4452 090-000	Stainless steel cross screw 4.2 x 32 mm cylinder screw (For fixing the mounting plate to the Top and rear cover)	100

# = Article will be sold out. Special orders remain possible.

# Bella® cassette

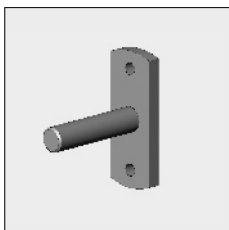
3



Part number	Description	Paint finish	Length in m <sup>1</sup> Pack. unit
4211 404-000	Alu end cover, left	Mill finish	
4211 406-000	Idem, right	Mill finish	
4211 480-008	Nylon end cover, left	grey	
4211 482-008	Idem, right	grey	
4211 480-006	Nylon end cover, left	white	
4211 482-006	Idem, right	white	
4211 480-901	Nylon end cover, left	cream	
4211 482-901	Idem, right	cream	

**For fixing the alu end cover use stud bolt M6 x 10 mm (4000 171-000) and flat washer M6 (4410 402-000).**

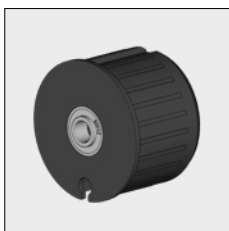
**For fixing the nylon end cover with Stainless steel screw vk/kk M6x16 (4000 154-000) and flat nut M6 (4000 282-000).**



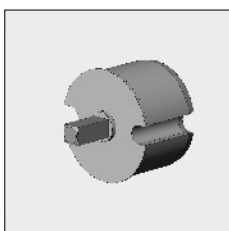
4210 498-080	Steel bearing pin 12 mm with fixing plate	Zinc-plated	10
--------------	---	-------------	----



4000 171-000	Stainless steel stud bolt M6 x 10 mm (For fixing the bearing pin to the mounting plate)		100
--------------	--	--	-----

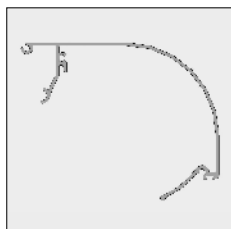


4470 080-068	Nylon bearing roller bung 78 incl. bearing with increased inner ring	Grey	10
--------------	---	------	----

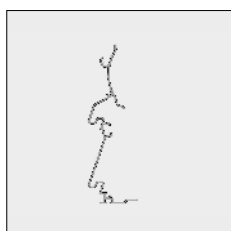
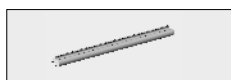


4000 330-000	Alu mono plug78, with square spindle 13 x 30 mm, flange 3 mm		
--------------	--	--	--

# = Article will be sold out. Special orders remain possible.



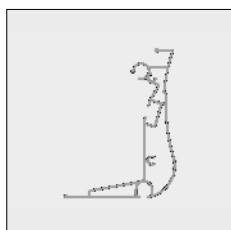
Part number	Description	Paint finish	Length in m <sup>1</sup> Pack. unit
6293 200-000	Alu top cover Bella	Mill finish	4.0
6293 204-000	Idem	Mill finish	5.0
6293 210-000	Idem	Mill finish	6.5
6293 200-016	Alu top cover Bella	silver anodized	4.0
6293 202-016 #	Idem	silver anodized	4.5
6293 204-016	Idem	silver anodized	5.0
6293 206-016	Idem	silver anodized	5.5
6293 208-016	Idem	silver anodized	6.0
6293 210-016	Idem	silver anodized	6.5
6293 200-006	Alu top cover Bella	RAL 9010 pure white	4.0
6293 202-006 #	Idem	RAL 9010 pure white	4.5
6293 204-006	Idem	RAL 9010 pure white	5.0
6293 206-006	Idem	RAL 9010 pure white	5.5
6293 208-006	Idem	RAL 9010 pure white	6.0
6293 210-006	Idem	RAL 9010 pure white	6.5
6293 200-901	Alu top cover Bella	RAL 9001 cream	4.0
6293 202-901 #	Idem	RAL 9001 cream	4.5
6293 204-901	Idem	RAL 9001 cream	5.0
6293 206-901	Idem	RAL 9001 cream	5.5
6293 208-901	Idem	RAL 9001 cream	6.0
6293 210-901	Idem	RAL 9001 cream	6.5
4211 130-080	Nylon sealing strip for top cover	black	50
4211 132-080	Idem	white	50
6293 240-000	Alu rear cover Bella	Mill finish	4.0
6293 244-000	Idem	Mill finish	5.0
6293 250-000	Idem	Mill finish	6.5
6293 240-016	Alu rear cover Bella	silver anodized	4.0
6293 244-016	Idem	silver anodized	5.0
6293 246-016	Idem	silver anodized	5.5
6293 248-016	Idem	silver anodized	6.0
6293 250-016	Idem	silver anodized	6.5
6293 240-006	Alu rear cover Bella	RAL 9010 pure white	4.0
6293 244-006	Idem	RAL 9010 pure white	5.0
6293 246-006	Idem	RAL 9010 pure white	5.5
6293 248-006	Idem	RAL 9010 pure white	6.0
6293 250-006	Idem	RAL 9010 pure white	6.5



# = Article will be sold out. Special orders remain possible.

# Bella® cassette

3

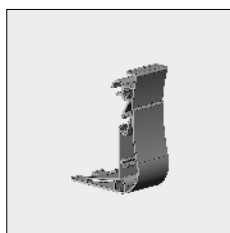


Part number	Description	Paint finish	Length in m <sup>1</sup> Pack. unit
6293 240-901	Alu rear cover Bella	RAL 9001 cream	4.0
6293 244-901	Idem	RAL 9001 cream	5.0
6293 246-901	Idem	RAL 9001 cream	5.5
6293 248-901	Idem	RAL 9001 cream	6.0
6293 250-901	Idem	RAL 9001 cream	6.5
4211 440-000	Nylon insert drain, incl. 2 adhesive strips (to be placed in top and rear cover)	Grey	5.0
4000 213-000	Nylon fabric string 6 mm		200
<b>After hooking in the top onto the rear cover, slide the fabric string in to the slot to connect the profiles.</b>			
6293 220-000	Alu front profile Bella	Mill finish	4.0
6293 224-000	Idem	Mill finish	5.0
6293 230-000	Idem	Mill finish	6.5
6293 220-016	Alu front profile Bella	silver anodized	4.0
6293 222-016 #	Idem	silver anodized	4.5
6293 224-016	Idem	silver anodized	5.0
6293 226-016	Idem	silver anodized	5.5
6293 228-016	Idem	silver anodized	6.0
6293 230-016	Idem	silver anodized	6.5
6293 220-006	Alu front profile Bella	RAL 9010 pure white	4.0
6293 224-006	Idem	RAL 9010 pure white	5.0
6293 226-006	Idem	RAL 9010 pure white	5.5
6293 228-006	Idem	RAL 9010 pure white	6.0
6293 230-006	Idem	RAL 9010 pure white	6.5
6293 220-901	Alu front profile Bella	RAL 9001 cream	4.0
6293 224-901	Idem	RAL 9001 cream	5.0
6293 226-901	Idem	RAL 9001 cream	5.5
6293 228-901	Idem	RAL 9001 cream	6.0
6293 230-901	Idem	RAL 9001 cream	6.5

# = Article will be sold out. Special orders remain possible.

Part number	Description	Paint finish	Length in m <sup>1</sup> Pack. unit
-------------	-------------	--------------	--

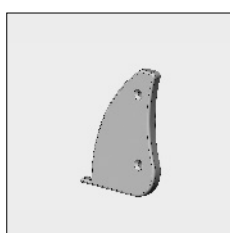
When using gear box 4210 569-000 or 4000 476-000/4000 477-000 (Refer to chapter 9A) the mounting plate can be provided with:



4211 414-001	Alu front profile - filling piece Bella	Silver anodized	
4211 414-006	Idem	RAL 9010 pure white	
4211 414-901	Idem	RAL 9001 cream	



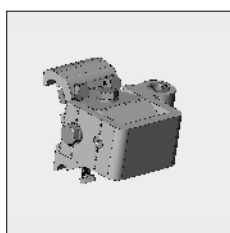
4210 141-000	Stainless steel cross screw 4,2x22 cylinder screw (for fixing the filling piece to the mounting plate)		100
--------------	---	--	-----



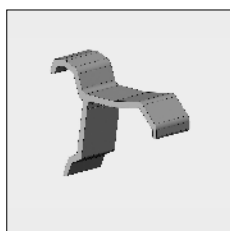
4211 434-000	Alu end cap front profile and filling piece, left	Mill finish	
4211 436-000	Idem, right	Mill finish	
4211 484-008	Nylon end cap front profile and filling piece, left	Grey	
4211 486-008	Idem, right	Grey	
4211 484-006	Nylon end cap front profile and filling piece, left	White	
4211 486-006	Idem, right	White	
4211 484-901	Nylon end cap front profile and filling piece, left	Cream	
4211 486-901	Idem, right	Cream	



4210 140-000	Stainless steel Plate screw countersunk Philips head 4,2 x 22 mm (For fixing the alu end cap to the filling or front profile)		100
--------------	--	--	-----



4211 470-090	Alu arm connection Bella, left	Mill finish	
4211 472-090	Idem, right	Mill finish	
4211 470-008	Alu arm connection Bella, left	RAL 7035 light grey	
4211 472-008	Idem, right	RAL 7035 light grey	
4211 470-006	Alu arm connection Bella, left	RAL 9010 pure white	
4211 472-006	Idem, right	RAL 9010 pure white	
4211 470-901	Alu arm connection Bella, left	RAL 9001 cream	
4211 472-901	Idem, right	RAL 9001 cream	



4211 416-090	Alu support for guiding the front profile excl. socket-head bolt 4410 238-000	Mill finish	
4211 416-008	Idem, including socket-head bolt	RAL 7035 light grey	
4211 416-006	Idem, including socket-head bolt	RAL 9010 pure white	
4211 416-901	Idem, including socket-head bolt	RAL 9001 cream	

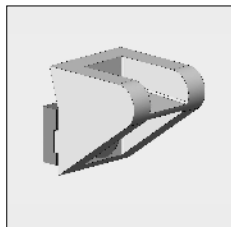
# = Article will be sold out. Special orders remain possible.

# Bella® cassette

Part number	Description	Paint finish	Length in m <sup>1</sup> Pack. unit
-------------	-------------	--------------	--

## ATTENTION!

With every folding arm awning use three separate guiding supports.  
Next to the two arm connections a guiding support and one in the centre of the awning.



4211 418-000	Nylon guide plate (position in the front profile across from the guiding supports)	White	10
4211 419-000	Idem	Black	10

## Further requirements:

- Rollers refer to chapter 1
- Multipurpose folding arms and accessories refer to chapter 2