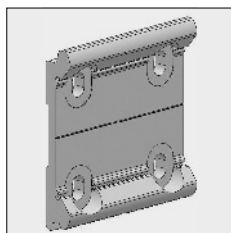
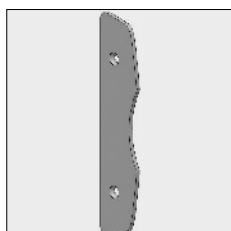


Part number	Description	Paint finish	Length in m ¹ Pack. Unit
-------------	-------------	--------------	--



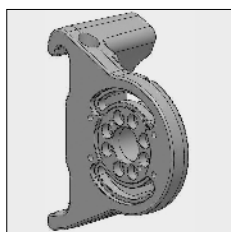
4211 772-090	Alu wall bracket 140 mm	Mill finish	
4211 772-008	Idem	RAL 7035 light grey	
4211 772-006	Idem	RAL 9010 pure white	
4211 772-901	Idem	RAL 9001 cream	
4211 772-755	Idem (* = textured)	RAL 7016 anthracite grey*	
4211 772-900	Idem (* = textured)	RAL 9005 jet black*	
4211 772-833	Idem (* = textured)	Sepia brown*	



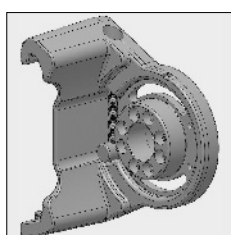
4211 776-000	Alu end cap wall bracket, uni	Mill finish	
4211 776-008	Idem	RAL 7035 light grey	
4211 776-006	Idem	RAL 9010 pure white	
4211 776-901	Idem	RAL 9001 cream	
4211 776-755	Idem (* = textured)	RAL 7016 anthracite grey*	
4211 776-900	Idem (* = textured)	RAL 9005 jet black*	
4211 776-833	Idem (* = textured)	Sepia brown*	



4452 080-000	Plate screw countersunk Philips head 4.2 x 16 mm (For fixing end cap to the fixing plate 4211 772).		100
--------------	--	--	-----



4211 750-000	Alu top cover support Gota, left	Mill finish	
4211 750-008	Idem	RAL 7035 light grey	
4211 750-006	Idem	RAL 9010 pure white	
4211 750-901	Idem	RAL 9001 cream	
4211 750-755	Idem (* = textured)	RAL 7016 anthracite grey*	
4211 750-900	Idem (* = textured)	RAL 9005 jet black*	
4211 750-833	Idem (* = textured)	Sepia brown*	



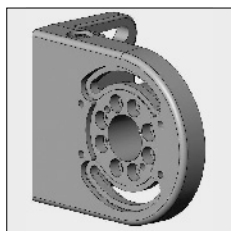
4211 752-000	Alu top cover support Gota, right	Mill finish	
4211 752-008	Idem	RAL 7035 light grey	
4211 752-006	Idem	RAL 9010 pure white	
4211 752-901	Idem	RAL 9001 cream	
4211 752-755	Idem (* = textured)	RAL 7016 anthracite grey*	
4211 752-900	Idem (* = textured)	RAL 9005 jet black*	
4211 752-833	Idem (* = textured)	Sepia brown*	

**Alternative top cover supports Linea are also suitable for the Gota:
Apply in combination with a steel wall strip or by mounting o a ceiling.**

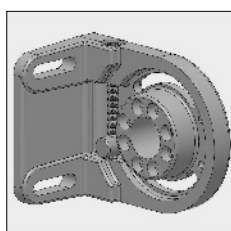
= Article will be sold out. Special orders remain possible.

Gota® cassette

3

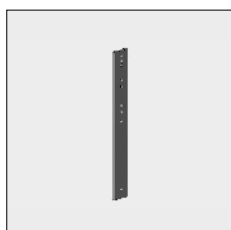


Part number	Description	Paint finish	Length in m Pack. Unit
4211 730-000	Alu top cover support Gota/Linea, left	Mill finish	
4211 730-008	Idem	RAL 7035 light grey	
4211 730-006	Idem	RAL 9010 pure white	
4211 730-901	Idem	RAL 9001 cream	
4211 730-755	Idem (* = textured)	RAL 7016 anthracite grey*	
4211 730-900	Idem (* = textured)	RAL 9005 jet black*	
4211 730-833	Idem (* = textured)	Sepia brown*	



4211 732-000	Alu top cover support Gota/Linea, right	Mill finish	
4211 732-008	Idem	RAL 7035 light grey	
4211 732-006	Idem	RAL 9010 pure white	
4211 732-901	Idem	RAL 9001 cream	
4211 732-755	Idem (* = textured)	RAL 7016 anthracite grey*	
4211 732-900	Idem (* = textured)	RAL 9005 jet black*	
4211 732-833	Idem (* = textured)	Sepia brown*	

Top cover supports 4211 730/732-... can be combined with:

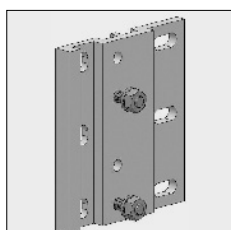


4210 181-008	Steel wall strip 565 x 70 x 15 mm	RAL 7035 light grey	
4210 181-006	Idem	RAL 9010 pure white	
4210 181-901	Idem	RAL 9001 cream	
4210 181-755	Idem (* = textured)	RAL 7016 anthracite grey*	
4210 181-900	Idem (* = textured)	RAL 9005 jet black*	
4210 181-833	Idem (* = textured)	Sepia brown*	



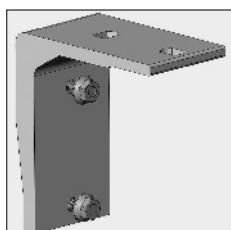
4210 187-068	Fixing package for wall strip 4210 181-...		
--------------	--	--	--

Use the wall bracket below in combination with top cover supports 4211 730/732-...:



4210 298-000	Alu wall bracket Gota/Linea	Mill finish	
4210 298-008	Idem	RAL 7035 light grey	
4210 298-006	Idem	RAL 9010 pure white	
4210 298-901	Idem	RAL 9001 cream	

Use the ceiling bracket below in combination with top cover supports 4211 730/732-...:

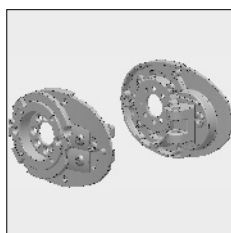


4210 250-008	Alu ceiling bracket Gota/Linea	RAL 7035 light grey	
4210 250-006	Idem	RAL 9010 pure white	
4210 250-901	Idem	RAL 9001 cream	

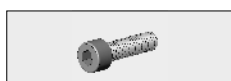
= Article will be sold out. Special orders remain possible.

Part number	Description	Paint finish	Length in m ¹ Pack. Unit
-------------	-------------	--------------	--

During the season 2018 the below mentioned mounting plate kit Gota (4211 746-...) will be changed into a new model (4211 846-...). To this new kit you need to add the centric pins (4211 299-000) so the arms can be adjusted from the sides in the mounting plate by bolts.



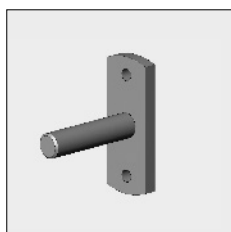
4211 746-090	Alu mounting set Gota	Mill finish	
4211 746-008	Idem	RAL 7035 light grey	
4211 746-006	Idem	RAL 9010 pure white	
4211 746-901	Idem	RAL 9001 cream	
4211 746-755	Idem (* = textured)	RAL 7016 anthracite grey*	
4211 778-900	Idem (* = textured)	RAL 9005 jet black*	
4211 746-833	Idem (* = textured)	Sepia brown*	



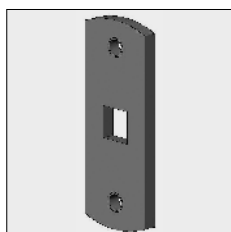
4410 400-000	Socket-head bolt M8 x 30 mm with Philips cylinder head (For fixing the mounting plate to the top cover support)		50
--------------	--	--	----



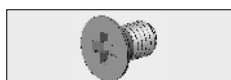
4452 093-000	Stainless steel washer M 8		100
--------------	----------------------------	--	-----



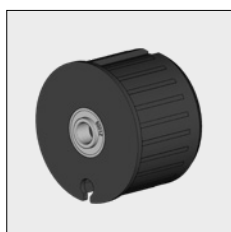
4210 498-080	Bearing pin 12 mm with fixing plate	Zinc-plated	10
--------------	-------------------------------------	-------------	----



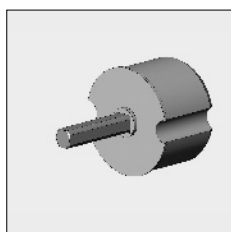
4211 298-000	Steel motor support for ASA motor, with square spindle hole 10 mm	Zinc-plated	
--------------	--	-------------	--



4210 484-000	Stainless steel screw with countersunk Philips head M6 x 10 mm (For fixing the bearing pin and motor support to the mounting plate).		50
--------------	---	--	----



4470 080-068	Nylon bearing roller bung 78 incl. bearing with increased inner ring	Grey	10
--------------	---	------	----



4210 508-068	Alu mono plug 78 with square spindle 13 x 70 mm		
--------------	---	--	--

= Article will be sold out. Special orders remain possible.

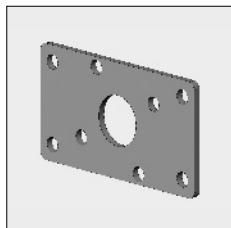
Gota® cassette

3

Part number	Description	Paint finish	Length in m Pack. Unit
-------------	-------------	--------------	---------------------------



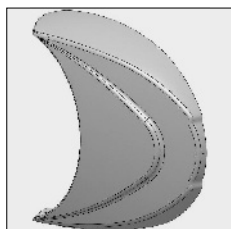
4210 270-000	Nylon packing ring with 15 mm hole, for square spindle 13 mm		10
--------------	--	--	----



4210 285-000	Gear box fixing plate Gota, Linea and Primo for 4000 482-000 and 4000 474-000 (refer to chapter 9A)		
--------------	---	--	--

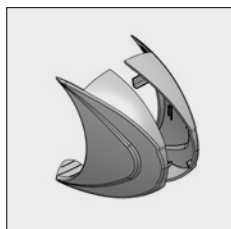


4410 409-000	Stainless steel tap bolt M 6 x 16 mm (for fixing the gear boxes 4000 482-000 and 4000 474-000 to the mounting plate)		50
--------------	--	--	----

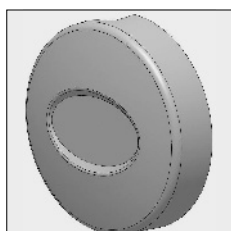


4211 760-008	Nylon end cover front side mounting plate	RAL 7035 light grey	
4211 760-006	Idem	RAL 9010 pure white	
4211 760-901	Idem	RAL 9001 cream	
4211 760-755	Idem (* = textured)	RAL 7016 anthracite grey*	
4211 760-900	Idem (* = textured)	RAL 9005 jet black*	
4211 760-833	Idem (* = textured)	Sepia brown*	

For ceiling mounting with ceiling mount bracket 4210 250-... use the above mentioned end covers. For ceiling mounting where the End fix brackets are turned to the ceiling, use the end covers below.

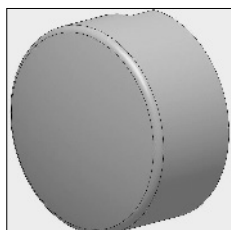


4211 794-008	Nylon end covers front side ceiling mounting kit L+R	RAL 7035 light grey	
4211 794-006	Idem	RAL 9010 pure white	
4211 794-901	Idem	RAL 9001 cream	
4211 794-755	Idem (* = textured)	RAL 7016 anthracite grey*	
4211 794-900	Idem (* = textured)	RAL 9005 jet black*	
4211 794-833 #	Idem (* = textured)	Sepia brown*	



4211 766-008	Nylon end cover high without groove for top cover support and with recess	RAL 7035 light grey	
4211 766-006	Idem	RAL 9010 pure white	
4211 766-901	Idem	RAL 9001 cream	
4211 766-755	Idem (* = textured)	RAL 7016 anthracite grey*	
4211 766-900	Idem (* = textured)	RAL 9005 jet black*	
4211 766-833	Idem (* = textured)	Sepia brown*	

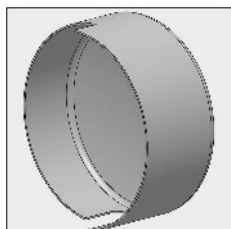
When using gear box/wall mounting:



4211 050-008	Nylon end cover high with groove, left	RAL 7035 light grey	
4211 050-006	Idem	RAL 9010 pure white	
4211 050-901	Idem	RAL 9001 cream	

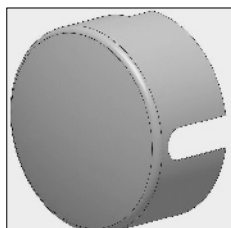
= Article will be sold out. Special orders remain possible.

Part number	Description	Paint finish	Length in m ¹ Pack. Unit
-------------	-------------	--------------	--



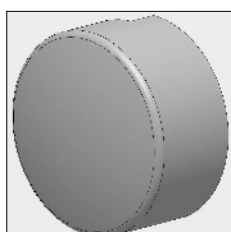
4211 052-008	Nylon end cover high with groove, right	RAL 7035 light grey	
4211 052-006	Idem	RAL 9010 pure white	
4211 052-901	Idem	RAL 9001 cream	

When using gear box/ceiling mounting:

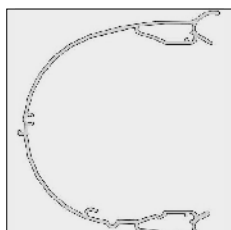


4211 056-008	Nylon end cover high without groove for ceiling mounting	RAL 7035 light grey	
4211 056-006	Idem	RAL 9010 pure white	
4211 056-901	Idem	RAL 9001 cream	

For motor- or bearing side, both for wall and ceiling mounting:



4211 054-008	Nylon end cover high without groove	RAL 7035 light grey	
4211 054-006	Idem	RAL 9010 pure white	
4211 054-901	Idem	RAL 9001 cream	



6293 342-000	Alu top cover Gota	Mill finish	4.0
6293 346-000	Idem	Mill finish	5.0
6293 350-000	Idem	Mill finish	6.0
6293 340-016	Alu top cover Gota	silver anodized	3.5
6293 342-016	Idem	silver anodized	4.0
6293 344-016	Idem	silver anodized	4.5
6293 346-016	Idem	silver anodized	5.0
6293 348-016	Idem	silver anodized	5.5
6293 350-016	Idem	silver anodized	6.0
6293 340-006	Alu top cover Gota	RAL 9010 pure white	3.5
6293 342-006	Idem	RAL 9010 pure white	4.0
6293 344-006	Idem	RAL 9010 pure white	4.5
6293 346-006	Idem	RAL 9010 pure white	5.0
6293 348-006	Idem	RAL 9010 pure white	5.5
6293 350-006	Idem	RAL 9010 pure white	6.0
6293 340-901	Alu top cover Gota	RAL 9001 cream	3.5
6293 342-901	Idem	RAL 9001 cream	4.0
6293 344-901	Idem	RAL 9001 cream	4.5
6293 346-901	Idem	RAL 9001 cream	5.0
6293 348-901	Idem	RAL 9001 cream	5.5
6293 350-901	Idem	RAL 9001 cream	6.0

= Article will be sold out. Special orders remain possible.

Part number	Description	Paint finish	Length in m Pack. Unit
6293 340-755	Alu top cover Gota (* = textured)	RAL 7016 anthracite grey*	3.5
6293 342-755	Idem	RAL 7016 anthracite grey*	4.0
6293 344-755	Idem	RAL 7016 anthracite grey*	4.5
6293 346-755	Idem	RAL 7016 anthracite grey*	5.0
6293 348-755	Idem	RAL 7016 anthracite grey*	5.5
6293 350-755	Idem	RAL 7016 anthracite grey*	6.0
6293 342-900	Alu top cover Gota (* = textured)	RAL 9005 jet black*	4.0
6293 346-900	Idem	RAL 9005 jet black*	5.0
6293 350-900	Idem	RAL 9005 jet black*	6.0
6293 342-833	Alu top cover Gota (* = textured)	Sepia brown*	4.0
6293 346-833	Idem	Sepia brown*	5.0
6293 350-833	Idem	Sepia brown*	6.0

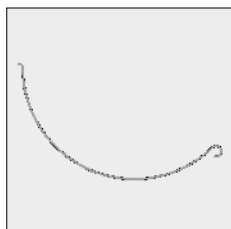
Optional roller support profile for finishing cassette:



6293 362-000	Alu roller support profile Gota	Mill finish	4.0
6293 366-000	Idem	Mill finish	5.0
6293 370-000	Idem	Mill finish	6.0
6293 360-016	Alu roller support profile Gota	silver anodized	3.5
6293 362-016	Idem	silver anodized	4.0
6293 364-016	Idem	silver anodized	4.5
6293 366-016	Idem	silver anodized	5.0
6293 368-016	Idem	silver anodized	5.5
6293 370-016	Idem	silver anodized	6.0
6293 360-006	Alu roller support profile Gota	RAL 9010 pure white	3.5
6293 362-006	Idem	RAL 9010 pure white	4.0
6293 364-006	Idem	RAL 9010 pure white	4.5
6293 366-006	Idem	RAL 9010 pure white	5.0
6293 368-006	Idem	RAL 9010 pure white	5.5
6293 370-006	Idem	RAL 9010 pure white	6.0
6293 360-901	Alu roller support profile Gota	RAL 9001 cream	3.5
6293 362-901	Idem	RAL 9001 cream	4.0
6293 364-901	Idem	RAL 9001 cream	4.5
6293 366-901	Idem	RAL 9001 cream	5.0
6293 368-901	Idem	RAL 9001 cream	5.5
6293 370-901	Idem	RAL 9001 cream	6.0

= Article will be sold out. Special orders remain possible.

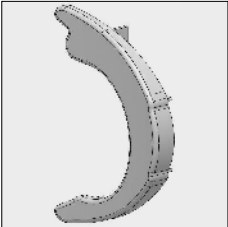
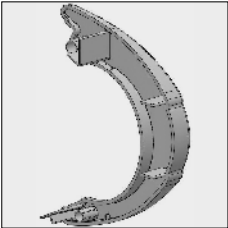

Part number	Description	Paint finish	Length in m ¹ Pack. Unit
6293 360-755	Alu roller support profile Gota (* = textured)	RAL 7016 anthracite grey*	3.5
6293 362-755	Idem	RAL 7016 anthracite grey*	4.0
6293 364-755	Idem	RAL 7016 anthracite grey*	4.5
6293 366-755	Idem	RAL 7016 anthracite grey*	5.0
6293 368-755	Idem	RAL 7016 anthracite grey*	5.5
6293 370-755	Idem	RAL 7016 anthracite grey*	6.0
6293 362-900	Alu roller support profile Gota (* = textured)	RAL 9005 jet black*	4.0
6293 366-900	Idem	RAL 9005 jet black*	5.0
6293 370-900	Idem	RAL 9005 jet black*	6.0
6293 362-833	Alu roller support profile Gota (* = textured)	Sepia brown*	4.0
6293 366-833	Idem	Sepia brown*	5.0
6293 370-833	Idem	Sepia brown*	6.0
4210 315-000	Nylon insert drain, incl. 2 adhesive strips, for roller support profile	Light grey	5.0
4210 152-000	Plate screw with countersunk Philips head 4.2 x 45 mm (For fixing the top cover support and roller support profile to the mounting plate).		100
6293 382-000	Alu front profile Gota	Mill finish	4.0
6293 386-000	Idem	Mill finish	5.0
6293 390-000	Idem	Mill finish	6.0
6293 380-016	Alu front profile Gota	silver anodized	3.5
6293 382-016	Idem	silver anodized	4.0
6293 384-016	Idem	silver anodized	4.5
6293 386-016	Idem	silver anodized	5.0
6293 388-016	Idem	silver anodized	5.5
6293 390-016	Idem	silver anodized	6.0
6293 380-006	Alu front profile Gota	RAL 9010 pure white	3.5
6293 382-006	Idem	RAL 9010 pure white	4.0
6293 384-006	Idem	RAL 9010 pure white	4.5
6293 386-006	Idem	RAL 9010 pure white	5.0
6293 388-006	Idem	RAL 9010 pure white	5.5
6293 390-006	Idem	RAL 9010 pure white	6.0



= Article will be sold out. Special orders remain possible.

Gota® cassette

3

Part number	Description	Paint finish	Length in m Pack. Unit
6293 380-901	Alu front profile Gota	RAL 9001 cream	3.5
6293 382-901	Idem	RAL 9001 cream	4.0
6293 384-901	Idem	RAL 9001 cream	4.5
6293 386-901	Idem	RAL 9001 cream	5.0
6293 388-901	Idem	RAL 9001 cream	5.5
6293 390-901	Idem	RAL 9001 cream	6.0
6293 380-755	Alu front profile Gota (* = textured)	RAL 7016 anthracite grey*	3.5
6293 382-755	Idem	RAL 7016 anthracite grey*	4.0
6293 384-755	Idem	RAL 7016 anthracite grey*	4.5
6293 386-755	Idem	RAL 7016 anthracite grey*	5.0
6293 388-755	Idem	RAL 7016 anthracite grey*	5.5
6293 390-755	Idem	RAL 7016 anthracite grey*	6.0
6293 382-900	Alu front profile Gota (* = textured)	RAL 9005 jet black*	4.0
6293 386-900	Idem	RAL 9005 jet black*	5.0
6293 390-900	Idem	RAL 9005 jet black*	6.0
6293 382-833	Alu front profile Gota (* = textured)	Sepia brown*	4.0
6293 386-833	Idem	Sepia brown*	5.0
6293 390-833	Idem	Sepia brown*	6.0
	4211 762-008	Nylon end cap front profile, left	RAL 7035 light grey
	4211 762-006	Idem	RAL 9010 pure white
	4211 762-901	Idem	RAL 9001 cream
	4211 762-755	Idem (* = textured)	RAL 7016 anthracite grey*
	4211 762-900	Idem (* = textured)	RAL 9005 jet black*
	4211 762-833	Idem (* = textured)	Sepia brown*
	4211 764-008	Nylon end cap front profile, right	RAL 7035 light grey
	4211 764-006	Idem	RAL 9010 pure white
	4211 764-901	Idem	RAL 9001 cream
	4211 764-755	Idem (* = textured)	RAL 7016 anthracite grey*
	4211 764-900	Idem (* = textured)	RAL 9005 jet black*
	4211 764-833	Idem (* = textured)	Sepia brown*
	4452 097-000	Stainless steel (AISI410) drill ZB.BK/KK 3.5 x 9.5 mm (For fixing end cap to front profile)	100

Further requirements:
 - Rollers refer to chapter 1
 - Multipurpose folding arms and accessories refer to chapter 2

= Article will be sold out. Special orders remain possible.