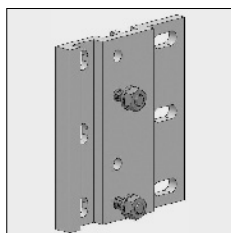
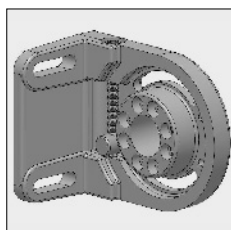


Part number	Description	Paint finish	Length in m ¹ Pack. unit
-------------	-------------	--------------	--



4210 298-000	Alu fixing plate for top cover support Linea, including fixing material	Mill finish	
4210 298-008	Idem	RAL 7035 light grey	
4210 298-006	Idem	RAL 9010 pure white	
4210 298-901	Idem	RAL 9001 cream	

Note: The top cover supports can also be mounted directly onto the wall.



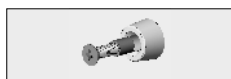
4211 730-000	Alu top cover support Linea, left	Mill finish	
4211 732-000	Idem, right	Mill finish	
4211 730-008	Alu top cover support Linea, left	RAL 7035 light grey	
4211 732-008	Idem, right	RAL 7035 light grey	
4211 730-006	Alu top cover support Linea, left	RAL 9010 pure white	
4211 732-006	Idem, right	RAL 9010 pure white	
4211 730-901	Alu top cover support Linea, left	RAL 9001 cream	
4211 732-901	Idem, right	RAL 9001 cream	



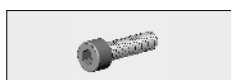
4211 960-090	Alu arm holder kit	Mill finish	
4211 960-008	Idem	RAL 7035 light grey	
4211 960-006	Idem	RAL 9010 pure white	
4211 960-901	Idem	RAL 9001 cream	



4211 299-000	Arm connection pin centric		10
--------------	----------------------------	--	----



4211 124-080	Nylon roller to guide the front profile (to mount on the upper cylinder of the arm holder)		10
--------------	--	--	----



4410 400-000	Socket-head bolt with Philips cylinder head M 8 x 30 mm (For fixing the arm holder to the top cover support)		50
--------------	--	--	----



4452 093-000	Stainless steel washer M8		100
--------------	---------------------------	--	-----

= Article will be sold out. Special orders remain possible.

Part number	Description	Paint finish	Length in m ¹ Pack. unit
-------------	-------------	--------------	--

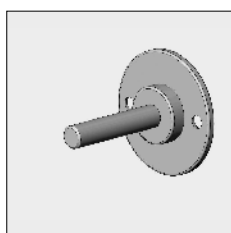
The top cover supports can be combined with:



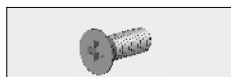
4210 181-008	Steel wall strip 565 x 70 x 15 mm	RAL 7035 light grey	
4210 181-006	Idem	RAL 9010 pure white	
4210 181-901	Idem	RAL 9001 cream	



4210 187-068	Fixing kit for wall strip 4210 181-...		
--------------	--	--	--



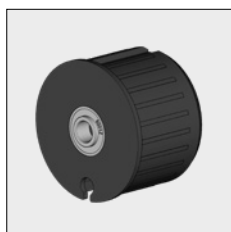
4210 280-000	Bearing pin 12 mm with fixing plate	Mill finish	
4210 280-008	Idem	RAL 7035 light grey	
4210 280-006	Idem	RAL 9010 pure white	
4210 280-901	Idem	RAL 9001 cream	



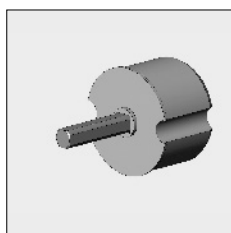
4000 154-000	Stainless steel screw, with countersunk Philips head M6 x 16 mm (For fixing the bearing pin to the top cover support)		50
--------------	--	--	----



4210 271-000	Nylon packing ring with 12 mm hole for bearing pin		10
--------------	--	--	----



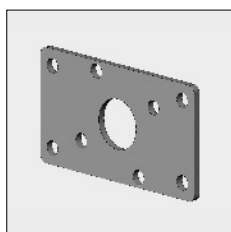
4470 080-068	Nylon bearing roller bung 78 incl. bearing with increased inner ring	Grey	10
--------------	--	------	----



4210 508-068	Alu monoplug 78, with square spindle 13 x 70 mm		
--------------	---	--	--



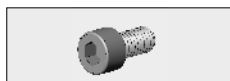
4210 270-000	Nylon packing ring with 15 mm hole, for square spindle 13 mm		10
--------------	--	--	----



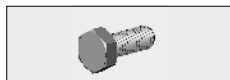
4210 285-000	Stainless steel fixing plate Linea, for gear boxes 4000 482-000 and 4000 474-000 (refer to chapter 9A)		
--------------	---	--	--

= Article will be sold out. Special orders remain possible.

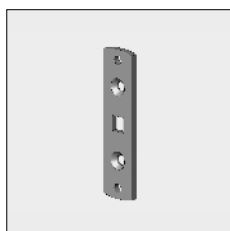
Part number	Description	Paint finish	Length in m ¹ Pack. unit
-------------	-------------	--------------	--



4410 409-000	Stainless steel tap bolt M 6 x 16 mm (For fixing the gear boxes 4000 482-000 and 4000 474-000 to the fixing plate)		50
--------------	---	--	----

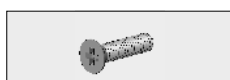


4210 963-000	Stainless steel socket-head bolt, with cylinder head M6 x 12 mm (For fixing the fixing plate to the top cover support)		100
--------------	---	--	-----



4210 282-000	Steel motor support Linea with square hole 10 mm		
--------------	--	--	--

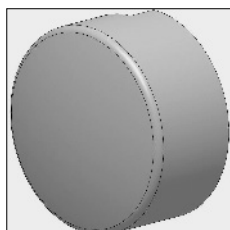
Note: For motors without the 10 mm square spindle, the corresponding motor bracket must be fastened on this support.



4452 112-000	Stainless steel screw with countersunk Philips head M6 x 25 mm (For fixing the motor support to the arm holder)		100
--------------	--	--	-----

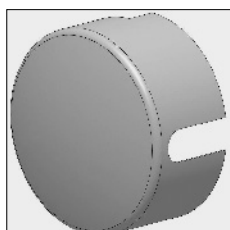
Various end covers are available for the top cover supports Linea. The kind depends on the operation and the operational side.

When using gear box/wall mounting:



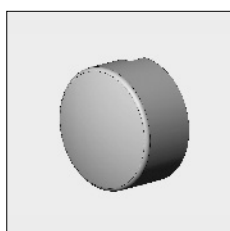
4211 050-008	Nylon end cover high with groove for top cover support, left	RAL 7035 light grey
4211 052-008	Idem, right	RAL 7035 light grey
4211 050-006	Nylon end cover high with groove for top cover support, left	RAL 9010 pure white
4211 052-006	Idem, right	RAL 9010 pure white
4211 050-901	Nylon end cover high with groove for top cover support, left	RAL 9001 cream
4211 052-901	Idem, right	RAL 9001 cream

When using gear box/ceiling mounting:




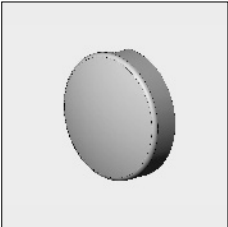
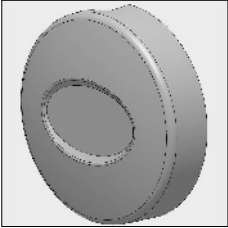
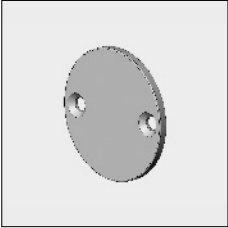
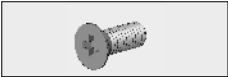
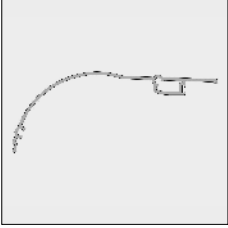
4210 294-068 #	Alu end cover high with groove for top cover support	Mill finish
4211 056-008	Nylon end cover high with groove for top cover support	RAL 7035 light grey
4211 056-006	Idem	RAL 9010 pure white
4211 056-901	Idem	RAL 9001 cream

For motor- or bearing side, both for wall or ceiling mounting:


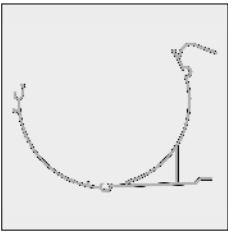

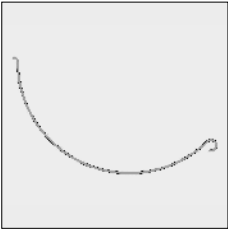


4211 054-008	Nylon end cover high without groove for top cover support	RAL 7035 light grey
4211 054-006	Idem	RAL 9010 pure white
4211 054-901	Idem	RAL 9001 cream

= Article will be sold out. Special orders remain possible.

Part number	Description	Paint finish	Length in m ¹ Pack. unit
	4452 084-000 Stainless steel plate screw with Philips cylinder head 3.5 x 6,5 mm (For mounting end cover to the top cover support)		100
For motor- or bearing side, both for wall or ceiling mounting:			
	4210 296-068 Alu end cover low without groove for top cover support	Mill finish	
	4211 766-008 Nylon end cover low without groove and with recess	RAL 7035 light grey	
	4211 766-006 Idem	RAL 9010 pure white	
	4211 766-901 Idem	RAL 9001 cream	
Alternative cover for motor side:			
	4210 284-000 Alu end cap for top cover support Linea	Mill finish	
	4210 284-008 Idem	RAL 7035 light grey	
	4210 284-006 Idem	RAL 9010 pure white	
	4210 284-901 Idem	RAL 9001 cream	
	4000 154-000 Stainless steel screw with countersunk Philips head M6 x 16 mm (For fixing end cap to top cover support)		50
	6293 062-000 Alu top cover Linea	Mill finish	4.0
	6293 066-000 Idem	Mill finish	5.0
	6293 069-000 Idem	Mill finish	6.0
	6293 060-016 Alu top cover Linea	silver anodized	3.5
	6293 062-016 Idem	silver anodized	4.0
	6293 064-016 Idem	silver anodized	4.5
	6293 066-016 Idem	silver anodized	5.0
	6293 068-016 Idem	silver anodized	5.5
	6293 069-016 Idem	silver anodized	6.0
	6293 060-006 Alu top cover Linea	RAL 9010 pure white	3.5
	6293 062-006 Idem	RAL 9010 pure white	4.0
	6293 064-006 Idem	RAL 9010 pure white	4.5
	6293 066-006 Idem	RAL 9010 pure white	5.0
	6293 068-006 Idem	RAL 9010 pure white	5.5
	6293 069-006 Idem	RAL 9010 pure white	6.0

= Article will be sold out. Special orders remain possible.

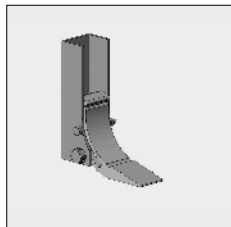
Part number	Description	Paint finish	Length in m ¹ Pack. unit
6293 060-901	Alu top cover Linea	RAL 9001 cream	3.5
6293 062-901	Idem	RAL 9001 cream	4.0
6293 064-901	Idem	RAL 9001 cream	4.5
6293 066-901	Idem	RAL 9001 cream	5.0
6293 068-901	Idem	RAL 9001 cream	5.5
6293 069-901	Idem	RAL 9001 cream	6.0
	4211 130-080 Nylon sealing for top cover	black	50
	4211 132-080 Idem	white	50
	6293 072-000 Alu bottom cover Linea	Mill finish	4.0
	6293 076-000 Idem	Mill finish	5.0
	6293 079-000 Idem	Mill finish	6.0
	6293 070-016 Alu bottom cover Linea	silver anodized	3.5
	6293 072-016 Idem	silver anodized	4.0
	6293 074-016 Idem	silver anodized	4.5
	6293 076-016 Idem	silver anodized	5.0
	6293 078-016 Idem	silver anodized	5.5
	6293 079-016 Idem	silver anodized	6.0
	6293 070-006 Alu bottom cover Linea	RAL 9010 pure white	3.5
	6293 072-006 Idem	RAL 9010 pure white	4.0
	6293 074-006 Idem	RAL 9010 pure white	4.5
	6293 076-006 Idem	RAL 9010 pure white	5.0
	6293 078-006 Idem	RAL 9010 pure white	5.5
	6293 079-006 Idem	RAL 9010 pure white	6.0
	6293 070-901 Alu bottom cover Linea	RAL 9001 cream	3.5
	6293 072-901 Idem	RAL 9001 cream	4.0
	6293 074-901 Idem	RAL 9001 cream	4.5
	6293 076-901 Idem	RAL 9001 cream	5.0
	6293 078-901 Idem	RAL 9001 cream	5.5
	6293 079-901 Idem	RAL 9001 cream	6.0
	4210 142-000 Plate screw with countersunk Philips head 4.2 x 32 mm (For fixing the top cover to the arm holder).		100
	4210 315-000 Nylon insert drain, incl. 2 self-adhesive strips to be placed in the bottom cover Linea	Light grey	5.0

= Article will be sold out. Special orders remain possible.

Part number	Description	Paint finish	Length in m ¹ Pack. unit
-------------	-------------	--------------	--

For a width of approx. 4.5 m. or more, use the following supports:

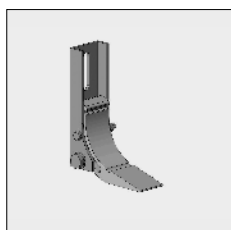
To fasten the awning by using a fixing plate or wall strip:



4210 256-008	Alu centre support Linea 36 mm	RAL 7035 light grey	
4210 256-006	Idem	RAL 9010 pure white	
4210 256-901	Idem	RAL 9001 cream	

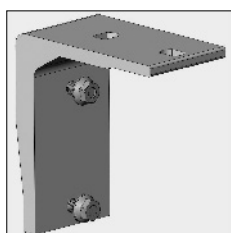
Note: Behind this support no fixing plate or wall strip is needed..

When fixing the awning directly onto the wall:

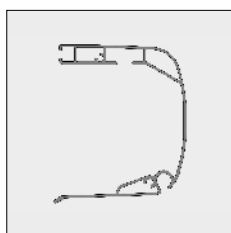


4210 257-008	Alu centre support Linea 20 mm	RAL 7035 light grey	
4210 257-006	Idem	RAL 9010 pure white	
4210 257-901	Idem	RAL 9001 cream	

Use the ceiling bracket below in combination with top cover supports 4211 730/732-....:

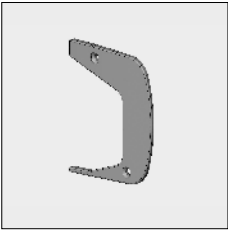
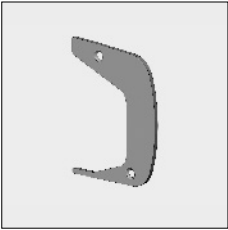




4210 250-008	Alu ceiling bracket Linea	RAL 7035 light grey	
4210 250-006	Idem	RAL 9010 pure white	
4210 250-901	Idem	RAL 9001 cream	



6293 082-000	Alu front profile Linea	Mill finish	4.0
6293 086-000	Idem	Mill finish	5.0
6293 089-000	Idem	Mill finish	6.0
6293 080-016	Alu front profile Linea	silver anodized	3.5
6293 082-016	Idem	silver anodized	4.0
6293 084-016	Idem	silver anodized	4.5
6293 086-016	Idem	silver anodized	5.0
6293 088-016	Idem	silver anodized	5.5
6293 089-016	Idem	silver anodized	6.0
6293 080-006	Alu front profile Linea	RAL 9010 pure white	3.5
6293 082-006	Idem	RAL 9010 pure white	4.0
6293 084-006	Idem	RAL 9010 pure white	4.5
6293 086-006	Idem	RAL 9010 pure white	5.0
6293 088-006	Idem	RAL 9010 pure white	5.5
6293 089-006	Idem	RAL 9010 pure white	6.0

= Article will be sold out. Special orders remain possible.

Part number	Description	Paint finish	Length in m ¹ Pack. unit
6293 080-901	Alu front profile Linea	RAL 9001 cream	3.5
6293 082-901	Idem	RAL 9001 cream	4.0
6293 084-901	Idem	RAL 9001 cream	4.5
6293 086-901	Idem	RAL 9001 cream	5.0
6293 088-901	Idem	RAL 9001 cream	5.5
6293 089-901	Idem	RAL 9001 cream	6.0
	4210 166-008	Nylon end cap for front profile Linea, left	grey
	4210 166-006	Idem	white
	4210 166-901	Idem	white
	4210 168-008	Nylon end cap for front profile Linea, right	grey
	4210 168-006	Idem	white
	4210 168-901	Idem	white
	4211 080-090	Alu end cap front profile Linea uni	Mill finish
	4210 142-000	Plate screw with countersunk Philips head M4.2 x 32 mm (For fixing the end cap to the front profile).	100

Further requirements:
 - Rollers refer to chapter 1
 - Multipurpose folding arms and accessories refer to chapter 2

= Article will be sold out. Special orders remain possible.