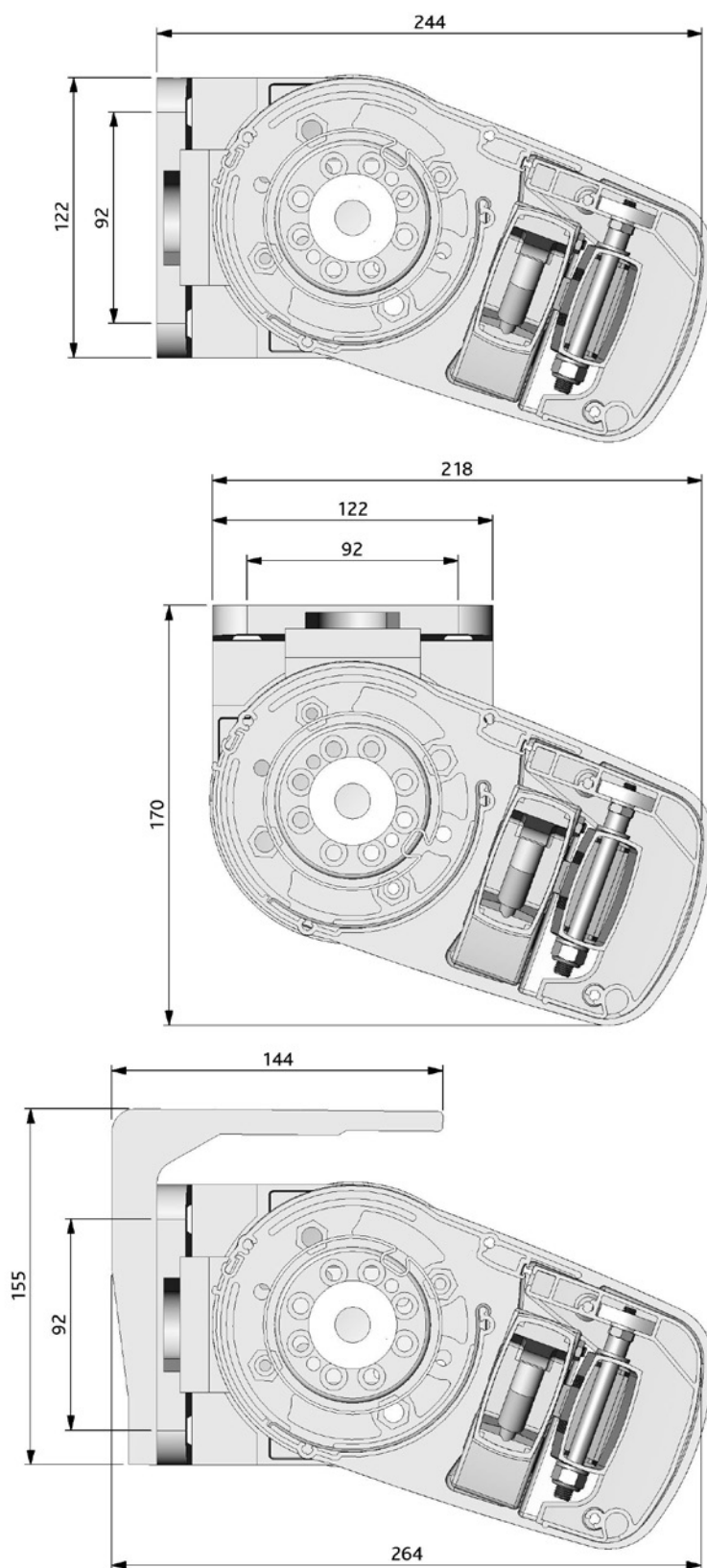
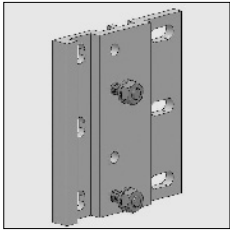


# Primo® semi cassette

3

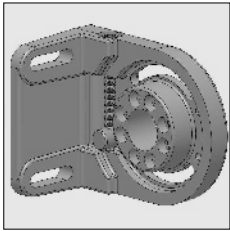


Part number	Description	Paint finish	Length in m <sup>1</sup> Pack. unit
-------------	-------------	--------------	--



4210 298-901	Alu fixing plate for top cover support, incl. fixing material	RAL 9001 cream	
4210 298-755	Idem (* = textured)	RAL 7016 anthracite grey*	

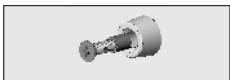
**Note: The top cover supports can also be mounted directly onto the wall.**



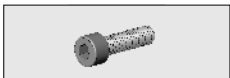
4211 730-901	Alu top cover support, left	RAL 9001 cream	
4211 732-901	Idem, right	RAL 9001 cream	
4211 730-755	Alu top cover support, left (* = textured)	RAL 7016 anthracite grey*	
4211 732-755	Idem, right	RAL 7016 anthracite grey*	



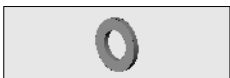
4211 960-901	Alu arm holder kit	RAL 9001 cream	
4211 960-755	Idem (* = textured)	RAL 7016 anthracite grey*	



4211 124-080	Nylon roller to guide the front profile, for fixing the upper cylinder of the arm holder.		10
--------------	---	--	----

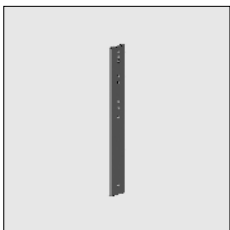


4410 400-000	Socket-head bolt with Philips cylinder head M8 x 30 mm (For fixing the arm holder to the top cover support).		50
--------------	--	--	----



4452 093-000	Stainless steel washer M8		100
--------------	---------------------------	--	-----

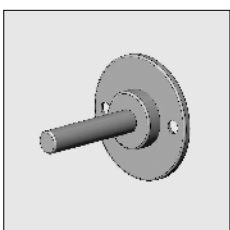
**The top cover supports can be combined with:**



4210 181-901	Steel wall strip 565 x 70 x 15 mm	RAL 9001 cream	
4210 181-755	Idem (* = textured)	RAL 7016 anthracite grey*	



4210 187-068	Fixing kit for wall strip 4210 181-...		
--------------	--	--	--

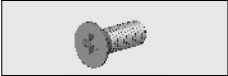


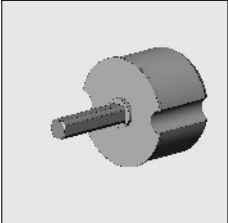

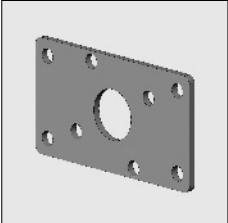
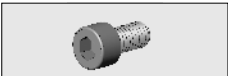
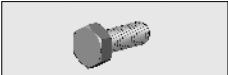
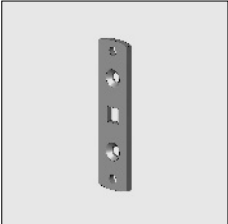



4210 280-901	Bearing pin 12 mm with fixing plate	RAL 9001 cream	
4210 280-755	Idem (* = textured)	RAL 7016 anthracite grey*	

# = Article will be sold out. Special orders remain possible.

# Primo® semi cassette

3

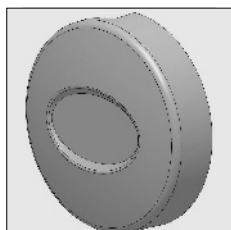
Part number	Description	Paint finish	Length in m <sup>1</sup> Pack. unit
	4000 154-000 Stainless steel screw, with countersunk Philips head M6 x 16 mm (For fixing the bearing pin to the top cover support).		50
	4210 271-000 Nylon packing ring with 12 mm hole for bearing pin		10
	4470 080-068 Nylon bearing roller bung 78 incl. bearing with increased inner ring	Grey	10
	4210 508-068 Alu roller bung 78, with square spindle 13 x 70 mm		
	4210 270-000 Nylon packing ring with 15 mm hole, for square spindle 13 mm		10
	4210 285-000 Stainless steel fixing plate Linea, for gear boxes 4000 482-000 and 4000 474-000 (refer to chapter 9A)		
	4410 409-000 Stainless steel tap bolt M6 x 16 mm (For fixing the gear boxes 4000 482-000 and 4000 474-000 to the fixing plate).		50
	4210 963-000 Stainless steel socket-head bolt, with cylinder head M6 x 12 mm (For fixing the fixing plate to the top cover support).		100
	4210 282-000 Steel motor support with square hole 10 mm		
<b>Note: For motors without the 10 mm square spindle, the corresponding motor bracket must be fastened on this support.</b>			
	4452 112-000 Screw with countersunk Philips head M6 x 25 mm (For fixing the motor support to the arm holder).		100

# = Article will be sold out. Special orders remain possible.

Part number	Description	Paint finish	Length in m <sup>1</sup> Pack. unit
-------------	-------------	--------------	--

Various end covers are available for the top cover supports.  
Which one depends on the operation and the operational side.

For motor- or bearing side, both for wall or ceiling mounting:

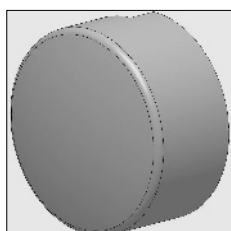


4211 766-901	Nylon end cover low without groove and with recess	RAL 9001 cream	
4211 766-755	Idem (* = textured)	RAL 7016 anthracite grey*	



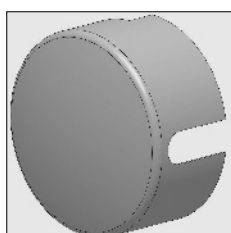
4210 186-080	Transparent decal, fits in the recess of the end cover.		2
--------------	---	--	---

When using gear box/wall mounting:



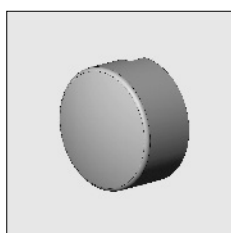
4211 050-901	Nylon end cover high with groove for top cover support	RAL 9001 cream	
4211 052-901	Idem, right	RAL 9001 cream	

When using gear box/ceiling mounting:



4211 056-901	Nylon end cover high with groove for top cover support	RAL 9001 cream	
--------------	--	----------------	--

For motor- or bearing side, both for wall or ceiling mounting:



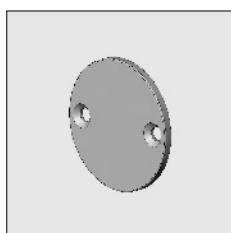
4211 054-901	Nylon end cover high without groove for top cover support	RAL 9001 cream	
--------------	---	----------------	--



4452 084-000	Plate screw with Philips cylinder head 3.5 x 6.5 mm (For fixing the end cover 4211 050/052/054/056 to the cover support).		100
--------------	--	--	-----

For motor- or bearing side, both for wall or ceiling mounting:

Alternative cover for motor side:



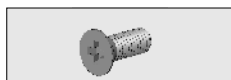
4210 284-901	Alu end cap for top cover support	RAL 9001 cream	
--------------	-----------------------------------	----------------	--

# = Article will be sold out. Special orders remain possible.

# Primo® semi cassette

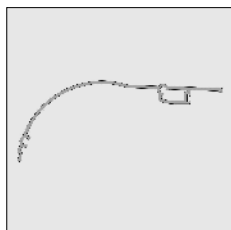
3

Part number	Description	Paint finish	Length in m <sup>1</sup> Pack. unit
-------------	-------------	--------------	--



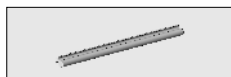
4000 154-000	Stainless steel screw with countersunk Philips head M6 x 16 mm (For fixing end cap to top cover support).		50
--------------	--	--	----

The aluminium profiles of the awning Primo (top cover, bottom cover and front profile) are already cut to the right size after the powder coat process, so an awning of 3.5 m., 4 m., 4.5 m., 5 m. and 5.5 m. can be manufactured. The profiles do not have to be cut to the right dimensions anymore. These dimensions are tailored to the use of the end covers low (4211 766-...) which are applied on motor side.

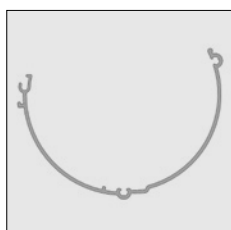


6293 131-901	Alu top cover Primo	RAL 9001 cream	3.4
6293 132-901	Idem	RAL 9001 cream	3.9
6293 133-901	Idem	RAL 9001 cream	4.4
6293 134-901	Idem	RAL 9001 cream	4.9
6293 135-901	Idem	RAL 9001 cream	5.4
6293 069-901	Idem	RAL 9001 cream	6.0

6293 131-755	Alu top cover Primo (* = textured)	RAL 7016 anthracite grey*	3.4
6293 132-755	Idem	RAL 7016 anthracite grey*	3.9
6293 133-755	Idem	RAL 7016 anthracite grey*	4.4
6293 134-755	Idem	RAL 7016 anthracite grey*	4.9
6293 135-755	Idem	RAL 7016 anthracite grey*	5.4
6293 069-755	Idem	RAL 7016 anthracite grey*	6.0

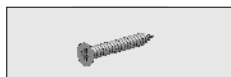


4211 130-080	Nylon sealing for top cover	Black	50
4211 132-080	Idem	White	50

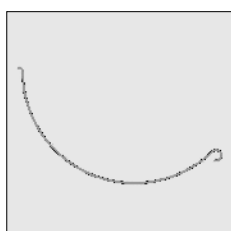


6293 143-901	Alu bottom cover Primo	RAL 9001 cream	3.4
6293 144-901	Idem	RAL 9001 cream	3.9
6293 145-901	Idem	RAL 9001 cream	4.4
6293 146-901	Idem	RAL 9001 cream	4.9
6293 147-901	Idem	RAL 9001 cream	5.4
6293 130-901	Idem	RAL 9001 cream	6.0

6293 143-755	Alu bottom cover Primo (* = textured)	RAL 7016 anthracite grey*	3.4
6293 144-755	Idem	RAL 7016 anthracite grey*	3.9
6293 145-755	Idem	RAL 7016 anthracite grey*	4.4
6293 146-755	Idem	RAL 7016 anthracite grey*	4.9
6293 147-755	Idem	RAL 7016 anthracite grey*	5.4
6293 130-755	Idem	RAL 7016 anthracite grey*	6.0



4210 142-000	Plate screw with countersunk Philips head 4.2 x 32 mm (For fixing the top cover to the arm holder).		100
--------------	--	--	-----



4210 315-000	Nylon insert drain, incl. 2 self-adhesive strips to be placed in the bottom cover Primo	Light grey	5.0
--------------	---	------------	-----

# = Article will be sold out. Special orders remain possible.

Part number	Description	Paint finish	Length in m <sup>1</sup> Pack. unit
-------------	-------------	--------------	--

For a width of approx. 4.5 m or more, use the following supports:

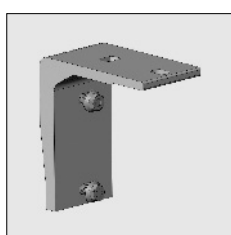
To fasten the awning by using a fixing plate or wall strip:



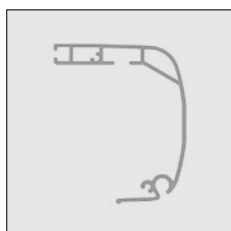
4210 248-901	Alu centre support Primo 36 mm	RAL 9001 cream	
4210 248-755	Idem (* = textured)	RAL 7016 anthracite grey*	

**Note:** Behind this support no fixing plate or wall strip is needed..

Use the ceiling bracket below in combination with top cover supports 4211 730/732-...:

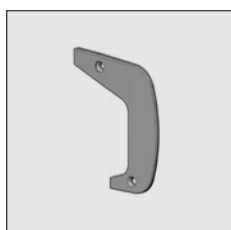


4210 250-901	Alu ceiling bracket Primo	RAL 9001 cream	
--------------	---------------------------	----------------	--



6293 137-901	Alu front profile Primo	RAL 9001 cream	3.38
6293 138-901	Idem	RAL 9001 cream	3.88
6293 139-901	Idem	RAL 9001 cream	4.38
6293 140-901	Idem	RAL 9001 cream	4.88
6293 141-901	Idem	RAL 9001 cream	5.38
6293 110-901	Idem	RAL 9001 cream	6.0

6293 137-755	Alu front profile Primo (* = textured)	RAL 7016 anthracite grey*	3.38
6293 138-755	Idem	RAL 7016 anthracite grey*	3.88
6293 139-755	Idem	RAL 7016 anthracite grey*	4.38
6293 140-755	Idem	RAL 7016 anthracite grey*	4.88
6293 141-755	Idem	RAL 7016 anthracite grey*	5.38
6293 110-755	Idem	RAL 7016 anthracite grey*	6.0



4210 160-901	Nylon end cap for front profile Primo, left	Cream	
4210 160-716	Idem	Anthracite grey	
4210 162-901	Nylon end cap for front profile Primo, right	Cream	
4210 162-716	Idem	Anthracite grey	



4210 142-000	Plate screw with countersunk Philips head 4,2 x 32 mm (For fixing the end cap to the front profile).		100
--------------	---	--	-----

# = Article will be sold out. Special orders remain possible.

# Primo® semi cassette

Part number	Description	Paint finish	Length in m <sup>1</sup> Pack. unit
-------------	-------------	--------------	--

**Projection 250 cm**  
**Arm size in closed position: 142,5 cm**



4210 811-901	Folding arm Primo incl. eccentric arm connectionpin, per pair	RAL 9001 cream	
4210 811-755	Idem (* = textured)	RAL 7016 anthracite grey*	

**Projection 300 cm**  
**Arm size in closed position: 171 cm**

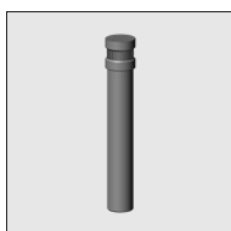


4210 816-901	Folding arm Primo incl. eccentric arm connectionpin, per pair	RAL 9001 cream	
4210 816-755	Idem (* = textured)	RAL 7016 anthracite grey*	

\* = arm size is measured from the centre of the mounting point for the arm connection.



4210 299-068	Front profile connector Primo only to be applied with the above mentioned arms 4210 811/816-...		
--------------	---	--	--



4211 995-000	Centric arm connection pin Primo 82 mm.		
--------------	---	--	--

Beside the above mentioned arms the Primo can be equipped with universal folding arms G-plus and M-plus. Apply the centric arm connection pin 4211 995-000 and front profile connector 4211 780/782-....

- Further requirements:**
- Rollers refer to chapter 1
  - Multipurpose folding arms and accessories refer to chapter 2

# = Article will be sold out. Special orders remain possible.