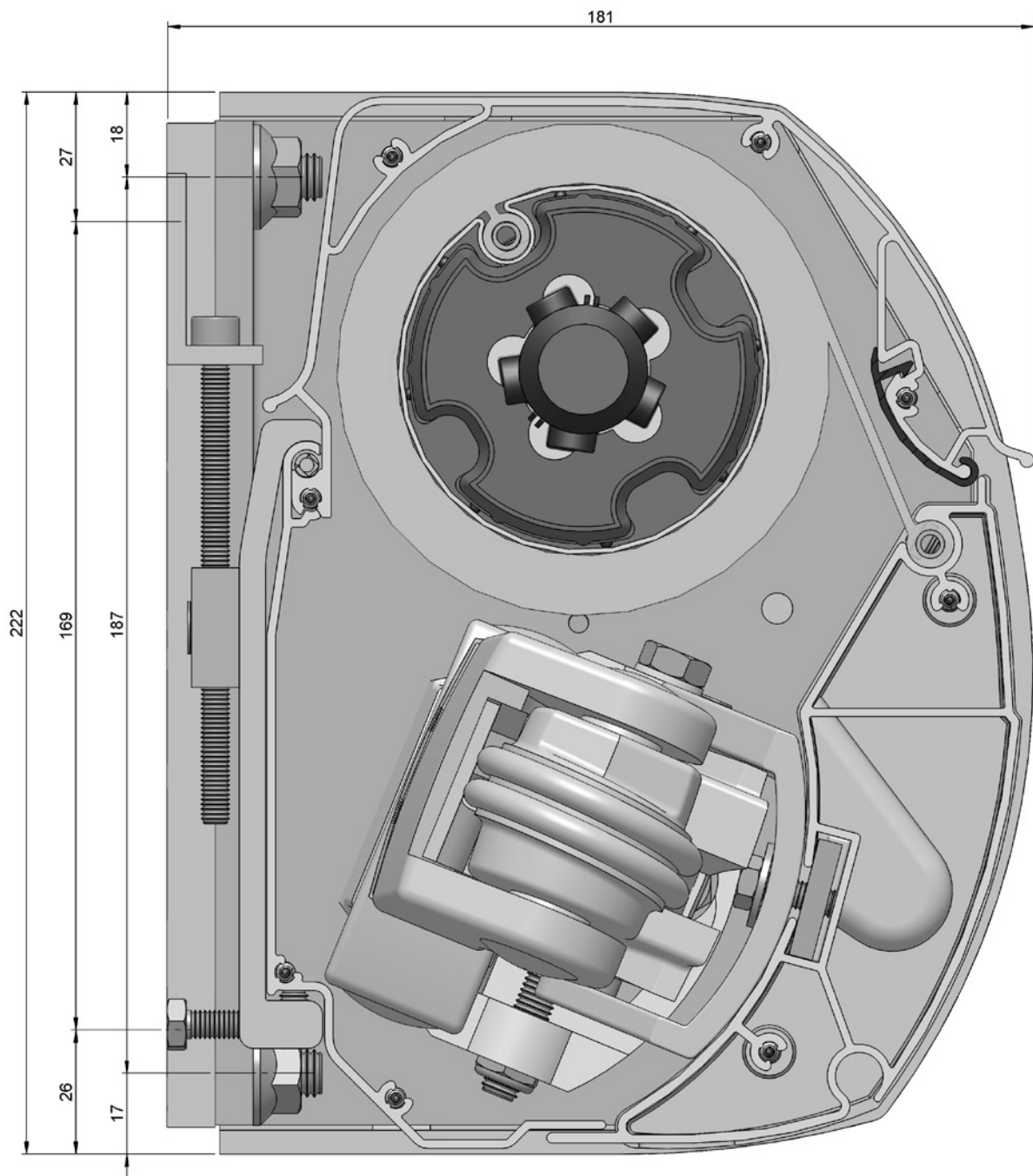
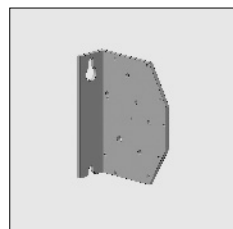


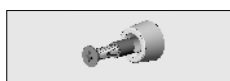
# Furore® cassette

3

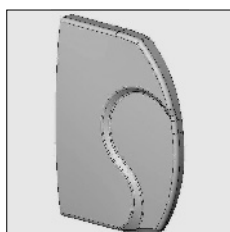




Part number	Description	Paint finish	Length in m <sup>1</sup> Pack. unit
4211 700-090	Alu top cover support Furore cassette, left	Mill finish	
4211 702-090	Idem, right	Mill finish	
4211 700-008	Alu top cover support Furore cassette, left	RAL 7035 light grey	
4211 702-008	Idem, right	RAL 7035 light grey	
4211 700-901	Alu top cover support Furore cassette, left	RAL 9001 cream	
4211 702-901	Idem, right	RAL 9001 cream	
4211 700-755	Alu top cover support Furore cassette, left (* = textured)	RAL 7016 anthracite grey*	
4211 702-755	Idem, right (* = textured)	RAL 7016 anthracite grey*	



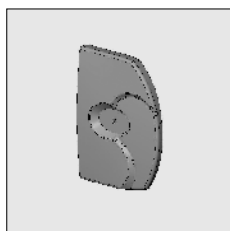
4211 124-080	Nylon guiding roll to fix on the top cover supports		10
--------------	---	--	----



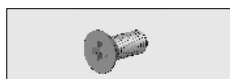
4211 110-000	Alu end cap Furore, left	Mill finish	
4211 112-000	Idem, right	Mill finish	



4000 270-000	Stainless steel cross screw, cylinder screw M6 x 12 mm (For fixing the alu end cap to the top cover support).		100
--------------	--	--	-----



4211 152-008	Nylon end cap Furore cassette, left	Grey	
4211 154-008	Idem, right	Grey	
4211 152-901	Nylon end cap Furore cassette, left	RAL 9001 cream	
4211 154-901	Idem, right	RAL 9001 cream	
4211 152-755	Nylon end cap Furore cassette, left (* = textured)	RAL 7016 anthracite grey*	
4211 154-755	Idem, right (* = textured)	RAL 7016 anthracite grey*	



4000 162-000	Plate screw countersunk Philips head M5 x 12 mm (For fixing the nylon end cap to the top cover support).		100
--------------	---	--	-----



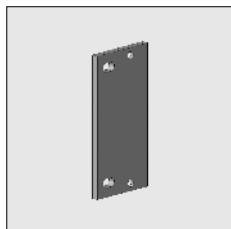
4210 186-080	Transparent decal, fits in the recess of the end cover.		2
--------------	---	--	---

# = Article will be sold out. Special orders remain possible.

# Furore® cassette

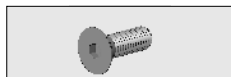
3

Part number	Description	Paint finish	Length in m <sup>1</sup> Pack. unit
-------------	-------------	--------------	--

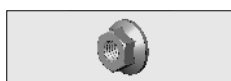


4211 120-090	Alu fastening plate for top cover support Furore	Mill finish	
4211 120-008	Idem	RAL 7035 light grey	
4211 120-901	Idem	RAL 9001 cream	
4211 120-755	Idem, (* = textured)	RAL 7016 anthracite grey*	

### For fixing the top cover supports to the mounting plate:

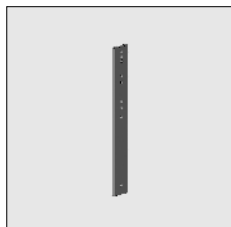


4210 481-000	Socket-head bolt with countersunk head M10 x 30 mm		50
--------------	--	--	----

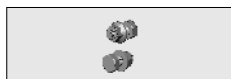


4211 150-000	Stainless steel flange nut M10		50
--------------	--------------------------------	--	----

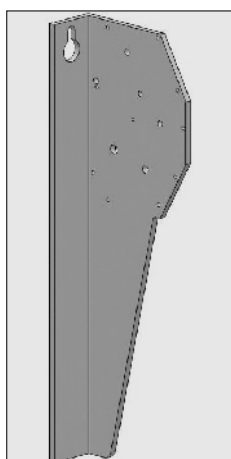
### The top cover supports can be combined with:



4210 181-008	Steel wall strip 565 x 70 x 15 mm	RAL 7035 light grey	
4210 181-901	Idem	RAL 9001 cream	
4210 181-755	Idem (* = textured)	RAL 7016 anthracite grey*	

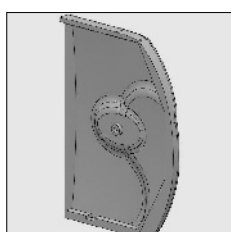


4210 183-068	Fixing kit for wall strip 4210 181-...		
--------------	--	--	--



4211 695-001	Alu top cover support Furore cassette 50 cm, left	silver anodized	
4211 697-001	Idem, right	silver anodized	
4211 695-901	Alu top cover support Furore cassette 50 cm, left	RAL 9001 cream	
4211 697-901	Idem, right	RAL 9001 cream	

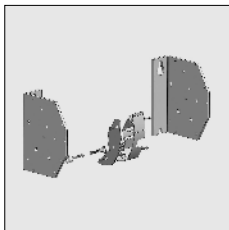
### For top cover supports 50 cm 4211 695/697 use the end caps 4211 157/159 mentioned below:



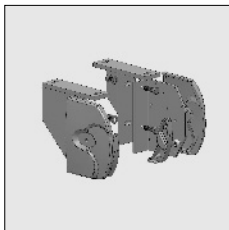
4211 157-008	Nylon end cap Furore cassette , left	Grey	
4211 159-008	Idem, right	Grey	
4211 157-901	Nylon end cap Furore cassette , left	RAL 9001 cream	
4211 159-901	Idem, right	RAL 9001 cream	

# = Article will be sold out. Special orders remain possible.

Part number	Description	Paint finish	Length in m <sup>1</sup> Pack. unit
4211 724-001	Alu top cover support kit for gear box Furore	Silver anodized	
4211 724-901	Idem	RAL 9001 cream	
4211 724-755	Idem, (* = textured)	RAL 7016 anthracite grey*	



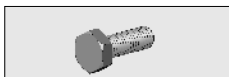
**When using gear box 4210 569-000 or 4000 476/477 refer to chapter 9.  
Please apply top cover support set (4211 724-...). The filling piece in the set is universally applicable (left and right).**



4211 720-008	Furore cassette kit for sealing mounting consisting of: - Top cover supports - Sealing supports, - End caps, front profile-end caps, roller and M12 bolts and nuts.	RAL 7035 light grey	
4211 720-901	Idem	RAL 9001 cream	

**Note: on request separately available.**

**For fixing the folding arm to the top cover support:**



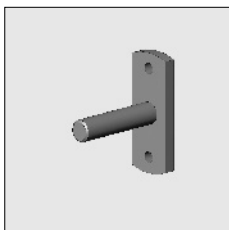
4211 160-000	Stainless steel hexagon bolt M10 x 30 mm		100
4211 161-000	Stainless steel hexagon bolt M10 x 40 mm		100



4210 482-000	Stainless steel washer M10		50
--------------	----------------------------	--	----

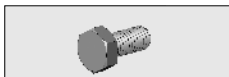


4210 053-000	Stainless steel nut M10 (for hexagon bolt M10 x 40 mm)		50
--------------	--	--	----



4210 498-080	Bearing pin 12 mm with wall bracket	Zinc plated	10
--------------	-------------------------------------	-------------	----

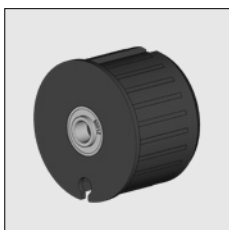
**For fixing the bearing pin to the top cover support:**



4410 272-000	Stainless steel hexagon bolt M6 x 14 mm		100
--------------	---	--	-----



4410 402-000	Stainless steel washer M6		100
--------------	---------------------------	--	-----

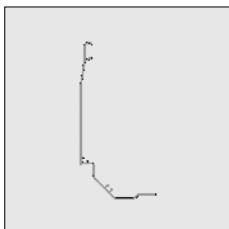
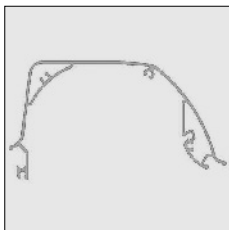
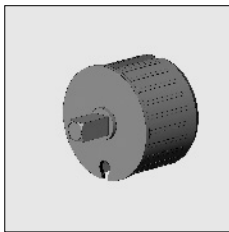


4470 080-068	Nylon bearing roller bung 78 incl. bearing with increased inner ring	Grey	10
--------------	--	------	----

# = Article will be sold out. Special orders remain possible.



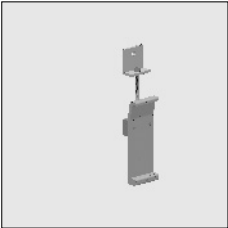
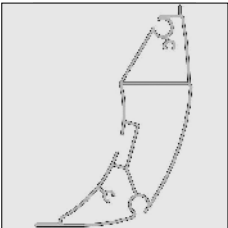
# Furore® cassette

3



Part number	Description	Paint finish	Length in m <sup>1</sup> Pack. unit
4470 088-000	Nylon roller bung 78, with square spindle 13 x 25 mm, flange 3 mm	Grey	
4000 330-000	Alu roller bung 78, with square spindle 13 x 30 mm, flange 3 mm		
6295 702-000	Alu top cover Furore cassette	Mill finish	4.0
6295 706-000	Idem	Mill finish	5.0
6295 710-000	Idem	Mill finish	6.0
6295 700-016	Alu top cover Furore cassette	silver anodized	3.5
6295 702-016	Idem	silver anodized	4.0
6295 704-016	Idem	silver anodized	4.5
6295 706-016	Idem	silver anodized	5.0
6295 708-016	Idem	silver anodized	5.5
6295 710-016	Idem	silver anodized	6.0
6295 700-901	Alu top cover Furore cassette	RAL 9001 cream	3.5
6295 702-901	Idem	RAL 9001 cream	4.0
6295 704-901	Idem	RAL 9001 cream	4.5
6295 706-901	Idem	RAL 9001 cream	5.0
6295 708-901	Idem	RAL 9001 cream	5.5
6295 710-901	Idem	RAL 9001 cream	6.0
6295 700-755	Alu top cover Furore cassette (* = textured)	RAL 7016 anthracite grey*	3.5
6295 702-755	Idem	RAL 7016 anthracite grey*	4.0
6295 704-755	Idem	RAL 7016 anthracite grey*	4.5
6295 706-755	Idem	RAL 7016 anthracite grey*	5.0
6295 708-755	Idem	RAL 7016 anthracite grey*	5.5
6295 710-755	Idem	RAL 7016 anthracite grey*	6.0
4211 725-000	Nylon insert profile for top cover, package 10 lengths.	Grey	5.5
6295 742-000	Alu bottom cover Furore cassette	Mill finish	4.0
6295 746-000	Idem	Mill finish	5.0
6295 750-000	Idem	Mill finish	6.0
6295 740-016	Alu bottom cover Furore cassette	silver anodized	3.5
6295 742-016	Idem	silver anodized	4.0
6295 744-016	Idem	silver anodized	4.5
6295 746-016	Idem	silver anodized	5.0
6295 748-016	Idem	silver anodized	5.5
6295 750-016	Idem	silver anodized	6.0

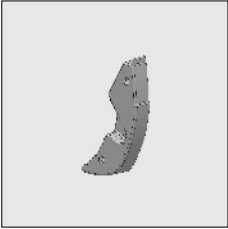
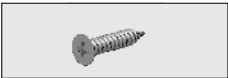
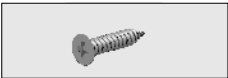
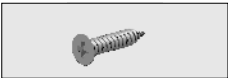
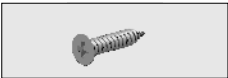
# = Article will be sold out. Special orders remain possible.

Part number	Description	Paint finish	Length in m <sup>1</sup> Pack. unit
6295 740-901	Alu bottom cover Furore cassette	RAL 9001 cream	3.5
6295 742-901	Idem	RAL 9001 cream	4.0
6295 744-901	Idem	RAL 9001 cream	4.5
6295 746-901	Idem	RAL 9001 cream	5.0
6295 748-901	Idem	RAL 9001 cream	5.5
6295 750-901	Idem	RAL 9001 cream	6.0
6295 740-755	Alu bottom cover Furore cassette (* = textured)	RAL 7016 anthracite grey*	3.5
6295 742-755	Idem	RAL 7016 anthracite grey*	4.0
6295 744-755	Idem	RAL 7016 anthracite grey*	4.5
6295 746-755	Idem	RAL 7016 anthracite grey*	5.0
6295 748-755	Idem	RAL 7016 anthracite grey*	5.5
6295 750-755	Idem	RAL 7016 anthracite grey*	6.0
	4210 141-000 Stainless steel cross screw 4,2 x 22 mm cylinder screw (For fixing the top cover support to the top cover).		100
	4000 469-000 Nylon fabric string 5 mm		200
<b>After connecting the bottom cover to the top cover, slide the fabric string in the groove to connect the profiles.</b>			
	4211 716-001 Alu centre support Furore cassette	Silver anodized	
	6295 722-000 Alu front profile Furore cassette	Mill finish	4.0
	6295 726-000 Idem	Mill finish	5.0
	6295 730-000 Idem	Mill finish	6.0
	6295 720-016 Alu front profile Furore cassette	silver anodized	3.5
	6295 722-016 Idem	silver anodized	4.0
	6295 724-016 Idem	silver anodized	4.5
	6295 726-016 Idem	silver anodized	5.0
	6295 728-016 Idem	silver anodized	5.5
	6295 730-016 Idem	silver anodized	6.0
	6295 720-901 Alu front profile Furore cassette	RAL 9001 cream	3.5
	6295 722-901 Idem	RAL 9001 cream	4.0
	6295 724-901 Idem	RAL 9001 cream	4.5
	6295 726-901 Idem	RAL 9001 cream	5.0
	6295 728-901 Idem	RAL 9001 cream	5.5
	6295 730-901 Idem	RAL 9001 cream	6.0

# = Article will be sold out. Special orders remain possible.

# Furore® cassette

3

Part number	Description	Paint finish	Length in m <sup>1</sup> Pack. unit
6295 720-755	Alu front profile Furore cassette (* = textured)	RAL 7016 anthracite grey*	3.5
6295 722-755	Idem (* = textured)	RAL 7016 anthracite grey*	4.0
6295 724-755	Idem (* = textured)	RAL 7016 anthracite grey*	4.5
6295 726-755	Idem (* = textured)	RAL 7016 anthracite grey*	5.0
6295 728-755	Idem (* = textured)	RAL 7016 anthracite grey*	5.5
6295 730-755	Idem (* = textured)	RAL 7016 anthracite grey*	6.0
			
4211 705-008	Nylon end cap for front profile, left	Grey	
4211 707-008	Idem, right	Grey	
			
4211 705-901	Nylon end cap for front profile, left	RAL 9001 cream	
4211 707-901	Idem, right	RAL 9001 cream	
			
4211 705-905	Nylon end cap for front profile, left	Black	
4211 707-905	Idem, right	Black	
			
4211 705-755	Nylon end cap for front profile, left (* = textured)	RAL 7016 anthracite grey*	
4211 707-755	Nylon end cap for front profile, right	RAL 7016 anthracite grey*	
			
4210 142-000	Plate screw with countersunk Philips head 4,2 x 32 mm (For fixing the end cap to the front profile).		100

**Further requirements:**

- Rollers refer to chapter 1
- Multipurpose folding arms and accessories refer to chapter 2

# = Article will be sold out. Special orders remain possible.