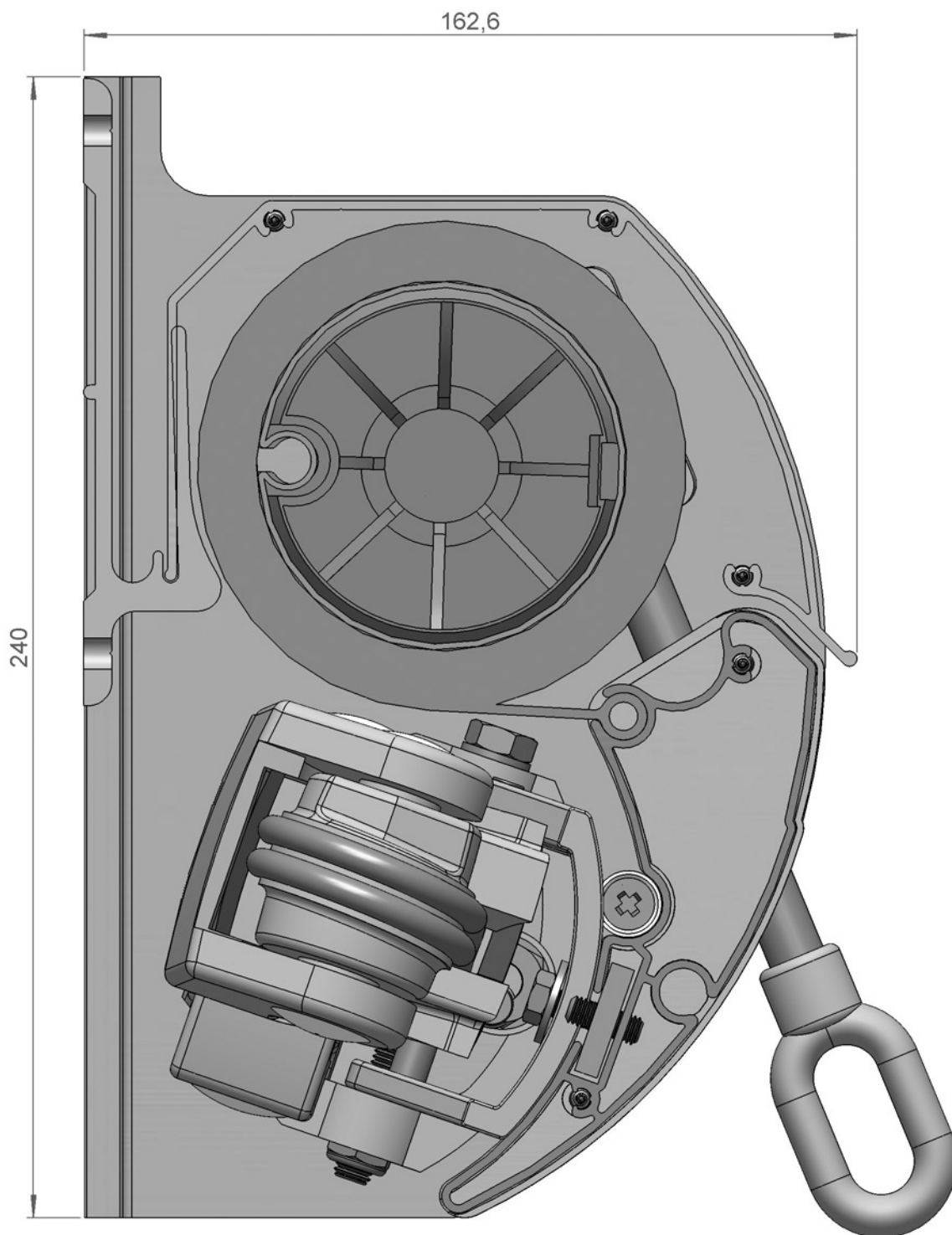
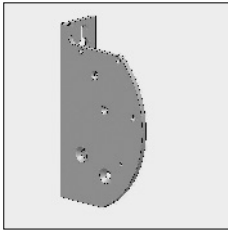


Picca® semi cassette



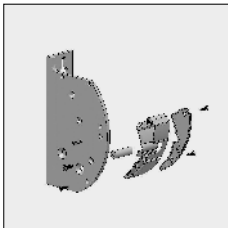
Part number	Description	Paint finish	Length in m ¹ Pack. unit
-------------	-------------	--------------	--

Use the below mentioned top cover support for the Picca WITHOUT alu end caps.

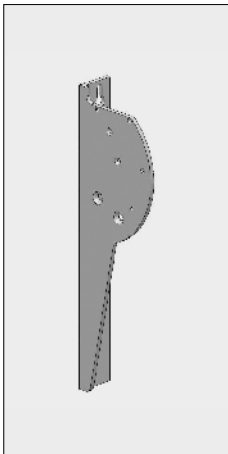


4211 200-090	Alu top cover support Picca, left	Mill finish	
4211 202-090	Idem, right	Mill finish	
4211 200-001	Alu top cover support Picca, left	Silver anodized	
4211 202-001	Idem, right	Silver anodized	
4211 200-901	Alu top cover support Picca, left	RAL 9001 cream	
4211 202-901	Idem, right	RAL 9001 cream	
4211 200-755	Alu top cover support Picca, left (* = textured)	RAL 7016 anthracite grey*	
4211 202-755	Idem, right	RAL 7016 anthracite grey*	

When operating a gear box (4210 570-000 or 4000 476/477-000 refer to chapter 9) apply the top cover support kit below on the side where the gear box is situated. On the bearing side apply the above mentioned standard top cover support.

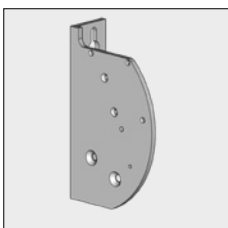


4211 220-001	Alu top cover support kit for gear box Picca, left	Silver anodized	
4211 222-001	Idem, right	Silver anodized	
4211 220-901	Alu top cover support kit for gear box Picca, left	RAL 9001 cream	
4211 222-901	Idem, right	RAL 9001 cream	
4211 220-755	Alu top cover support kit for gear box Picca, left (* = textured)	RAL 7016 anthracite grey*	
4211 222-755	Idem, right	RAL 7016 anthracite grey*	



4211 224-090	Alu top cover support Picca 50 cm, left	Mill finish	
4211 226-090	Idem, right	Mill finish	
4211 224-001	Alu top cover support Picca 50 cm, left	Silver anodized	
4211 226-001	Idem, right	Silver anodized	
4211 224-901	Alu top cover support Picca 50 cm, left	RAL 9001 cream	
4211 226-901	Idem, right	RAL 9001 cream	
4211 224-755	Alu top cover support Picca 50 cm, left (* = textured)	RAL 7016 anthracite grey*	
4211 226-755	Idem, right	RAL 7016 anthracite grey*	

Use the below mentioned top cover support for the Picca WITH alu end caps.



4211 230-001	Alu top cover support with hole Picca, left	Silver anodized	
4211 232-001	Idem, right	Silver anodized	
4211 230-901	Alu top cover support with hole Picca, left	RAL 9001 cream	
4211 232-901	Idem, right	RAL 9001 cream	

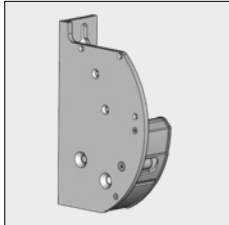
= Article will be sold out. Special orders remain possible.

Picca® semi cassette

Part number	Description	Paint finish	Length in m ¹ Pack. unit
4211 230-755	Alu top cover support with hole Picca, left (* = textured)	RAL 7016 anthracite grey*	
4211 232-755	Idem, right	RAL 7016 anthracite grey*	

When operating a gear box (4210 570-000 or 4000 476/477-000 refer to chapter 9) apply the top cover support kit below on the side where the gear box is situated. On the bearing side apply the standard top cover support.

3



4211 244-001	Alu top cover support kit with hole for gear box Picca, left	Silver anodized	
4211 246-001	Idem, right	Silver anodized	
4211 244-901	Alu top cover support kit with hole for gear box Picca, left	RAL 9001 cream	
4211 246-901	Idem, right	RAL 9001 cream	
4211 244-755	Alu top cover support kit with hole for gear box Picca, left (* = textured)	RAL 7016 anthracite grey*	
4211 246-755	Idem, right	RAL 7016 anthracite grey*	



4211 190-090	Alu end cap Picca, left	RAL 7035 light grey	
4211 192-090	Idem, right	RAL 7035 light grey	
4211 190-901	Alu end cap Picca, left	RAL 9001 cream	
4211 192-901	Idem, right	RAL 9001 cream	
4211 190-755	Alu end cap Picca, left (* = textured)	RAL 7016 anthracite grey*	
4211 192-755	Idem, right	RAL 7016 anthracite grey*	

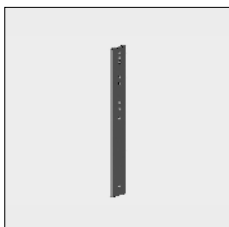


4000 270-000	Cross screw, cylinder screw M6 x 12 mm (For fixing the end cap to the top cover support)		100
--------------	---	--	-----

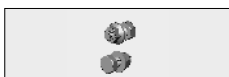


4211 209-080	Nylon roller for Picca. (For fixing the top cover support or packing bus in the top cover support kit for gear box).		10
--------------	---	--	----

The top cover supports (4211 200/202/220/222-...) can be combined with:



4210 181-008	Steel wall strip 565 x 70 x 15 mm	RAL 7035 light grey	
4210 181-901	Idem	RAL 9001 cream	
4210 181-755	Idem (* = textured)	RAL 7016 anthracite grey*	

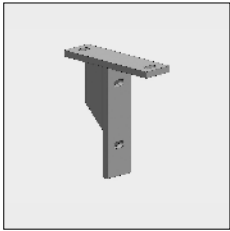
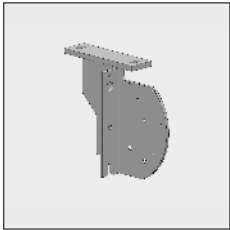


4210 183-068	Fixing kit for wall strip 4210 181- . . .		
--------------	---	--	--

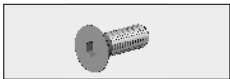
= Article will be sold out. Special orders remain possible.

Part number	Description	Paint finish	Length in m ¹ Pack. unit
-------------	-------------	--------------	--

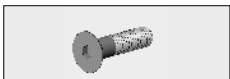
Top cover support Picca 4211 200/202-... can be mounted on the ceiling brackets.
 An extra hole (M10) need to be drilled and tapped into the top cover support (refer to drawing).
 The top cover support can be mounted to the ceiling bracket with:
 Stud bolt M10 x 40 mm (4211 161-000), washer M10 (4210 482-000) and nut M10 (4210 053-000).



4210 190-008	Alu ceiling bracket, left	RAL 7035 light grey	
4210 192-008	Idem, right	RAL 7035 light grey	



4210 481-000	Stainless steel socket-head bolt M10 x 30 mm countersunk (For fixing the top cover support to the folding arm - fixed point).		50
--------------	--	--	----



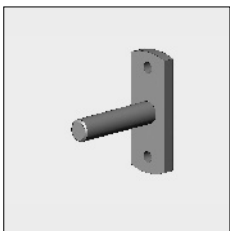
4210 047-000	Stainless steel socket-head bolt M10 x 40 mm countersunk (For fixing the top cover support to the folding arm adjusting slot)		50
--------------	--	--	----



4210 482-000	Stainless steel washer M10		50
--------------	----------------------------	--	----



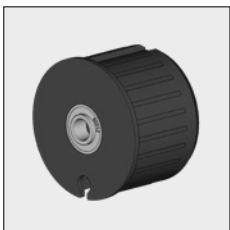
4210 053-000	Stainless steel nut M10 (for socket-head bolt M10 x 40 mm)		50
--------------	--	--	----



4210 498-080	Bearing pin 12 mm with wall bracket	zinc-plated	10
--------------	-------------------------------------	-------------	----



4000 151-000	Stainless steel countersunk cross screw M6 x 12 mm (For fixing the bearing pin to the top cover support).		100
--------------	--	--	-----

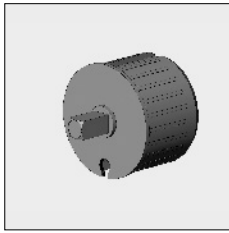


4470 080-068	Nylon bearing roller bung 78 incl. bearing with increased inner ring	Grey	10
--------------	---	------	----

= Article will be sold out. Special orders remain possible.

Picca® semi cassette

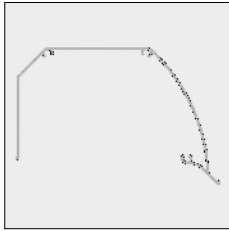
3



Part number	Description	Paint finish	Length in m ¹ Pack. unit
-------------	-------------	--------------	--

4470 088-000	Nylon roller bung 78, with square spindle 13 x 25 mm, flange 3 mm	Grey	
--------------	---	------	--

4000 330-000	Alu roller bung 78, with square spindle 13 x 30 mm, flange 3 mm		
--------------	---	--	--



6293 152-000	Alu top cover Picca	Mill finish	4.0
--------------	---------------------	-------------	-----

6293 156-000	Idem	Mill finish	5.0
--------------	------	-------------	-----

6293 160-000	Idem	Mill finish	6.0
--------------	------	-------------	-----

6293 150-016	Alu top cover Picca	Silver anodized	3.5
--------------	---------------------	-----------------	-----

6293 152-016	Idem	Silver anodized	4.0
--------------	------	-----------------	-----

6293 154-016	Idem	Silver anodized	4.5
--------------	------	-----------------	-----

6293 156-016	Idem	Silver anodized	5.0
--------------	------	-----------------	-----

6293 158-016	Idem	Silver anodized	5.5
--------------	------	-----------------	-----

6293 160-016	Idem	Silver anodized	6.0
--------------	------	-----------------	-----

6293 150-901	Alu top cover Picca	RAL 9001 cream	3.5
--------------	---------------------	----------------	-----

6293 152-901	Idem	RAL 9001 cream	4.0
--------------	------	----------------	-----

6293 154-901	Idem	RAL 9001 cream	4.5
--------------	------	----------------	-----

6293 156-901	Idem	RAL 9001 cream	5.0
--------------	------	----------------	-----

6293 158-901	Idem	RAL 9001 cream	5.5
--------------	------	----------------	-----

6293 160-901	Idem	RAL 9001 cream	6.0
--------------	------	----------------	-----

6293 150-755	Alu top cover Picca (* = textured)	RAL 7016 anthracite grey*	3.5
--------------	------------------------------------	---------------------------	-----

6293 152-755	Idem	RAL 7016 anthracite grey*	4.0
--------------	------	---------------------------	-----

6293 154-755	Idem	RAL 7016 anthracite grey*	4.5
--------------	------	---------------------------	-----

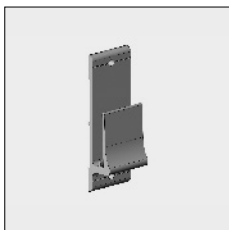
6293 156-755	Idem	RAL 7016 anthracite grey*	5.0
--------------	------	---------------------------	-----

6293 158-755	Idem	RAL 7016 anthracite grey*	5.5
--------------	------	---------------------------	-----

6293 160-755	Idem	RAL 7016 anthracite grey*	6.0
--------------	------	---------------------------	-----



4210 142-000	Stainless steel plate screw countersunk Philips head 4.2 x 32 mm (For fixing the top cover to the top cover support).		100
--------------	---	--	-----



4210 060-001	Alu extruded centre bracket for top cover	Silver anodized	
--------------	---	-----------------	--

4210 060-901	Idem	RAL 9001 cream	
--------------	------	----------------	--

4210 060-755	Idem (* = textured)	RAL 7016 anthracite grey*	
--------------	---------------------	---------------------------	--

= Article will be sold out. Special orders remain possible.

Part number	Description	Paint finish	Length in m ¹ Pack. unit
6293 172-000	Alu front profile Picca	Mill finish	4.0
6293 176-000	Idem	Mill finish	5.0
6293 180-000	Idem	Mill finish	6.0
6293 170-016	Alu front profile Picca	Silver anodized	3.5
6293 172-016	Idem	Silver anodized	4.0
6293 174-016	Idem	Silver anodized	4.5
6293 176-016	Idem	Silver anodized	5.0
6293 178-016	Idem	Silver anodized	5.5
6293 180-016	Idem	Silver anodized	6.0
6293 170-901	Alu front profile Picca	RAL 9001 cream	3.5
6293 172-901	Idem	RAL 9001 cream	4.0
6293 174-901	Idem	RAL 9001 cream	4.5
6293 176-901	Idem	RAL 9001 cream	5.0
6293 178-901	Idem	RAL 9001 cream	5.5
6293 180-901	Idem	RAL 9001 cream	6.0
6293 170-755	Alu front profile Picca (* = textured)	RAL 7016 anthracite grey*	3.5
6293 172-755	Idem	RAL 7016 anthracite grey*	4.0
6293 174-755	Idem	RAL 7016 anthracite grey*	4.5
6293 176-755	Idem	RAL 7016 anthracite grey*	5.0
6293 178-755	Idem	RAL 7016 anthracite grey*	5.5
6293 180-755	Idem	RAL 7016 anthracite grey*	6.0
4211 204-008	Nylon end cap for front profile Picca, left	grey	10
4211 206-008	Idem, right	grey	10
4211 204-901	Nylon end cap for front profile Picca, left	cream	10
4211 206-901	Idem, right	cream	10
4211 204-905	Nylon end cap for front profile Picca, left	black	10
4211 206-905	Idem, right	black	10
4210 140-000	Stainless steel Plate screw countersunk Philips head 4.2 x 22 mm (For fixing the end cap to the front profile).		100

Further requirements:
 - Rollers refer to chapter 1
 - Multipurpose folding arms and accessories refer to chapter 2