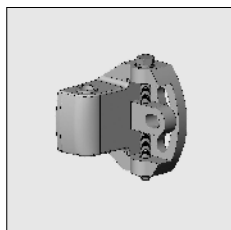


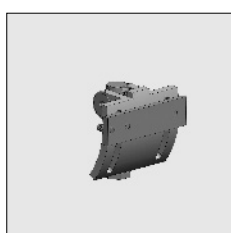
Accessories for universal folding arms G-Plus and M-Plus

Part number	Description	Paint finish	Length in m ¹ Pack. unit
-------------	-------------	--------------	--

Picca, Furore and cassette Furore :



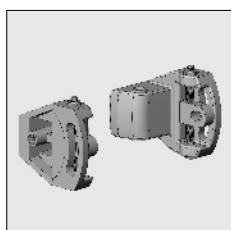
4210 094-008	Alu arm connection compact to the top cover support, with adjusting bolt, block and nut, left	RAL 7035 light grey	
4210 096-008	Idem, right	RAL 7035 light grey	
4210 094-901	Alu arm connection compact to the top cover support, with adjusting bolt, block and nut, left	RAL 9001 cream	
4210 096-901	Idem, right	RAL 9001 cream	
4210 094-755	Alu arm connection compact to the top cover support, with adjusting bolt, block and nut, left (* = textured)	RAL 7016 anthracite grey*	
4210 096-755	Idem, right (* = textured)	RAL 7016 anthracite grey*	



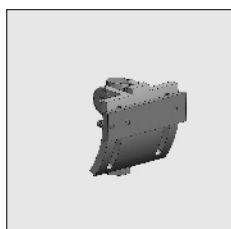
4211 045-000	Alu front profile connector Picca and Furore, left	Mill finish	
4211 047-000	Idem, right	Mill finish	
4211 045-008	Alu front profile connector Picca and Furore, left	RAL 7035 light grey	
4211 047-008	Idem, right	RAL 7035 light grey	
4211 045-901	Alu front profile connector Picca and Furore, left	RAL 9001 cream	
4211 047-901	Idem, right	RAL 9001 cream	
4211 045-755	Alu front profile connector Picca and Furore, left (* = textured)	RAL 7016 anthracite grey*	
4211 047-755	Idem, right (* = textured)	RAL 7016 anthracite grey*	

**Note.: After adjusting the adjusting bolt, please fix with Loctite .
(Part number 4210 175-000 see chapter Additional and fixing materials - 9B).**

**Furore:
ATTENTION: Only to be used in combination with old model top cover supports (Fixation holes 60 mm).**



4210 070-008	Alu arm connection the top cover support, with adjusting bolt, block and nut, left	RAL 7035 light grey	
4210 072-008	Idem, right	RAL 7035 light grey	
4210 070-901	Alu arm connection the top cover support, with adjusting bolt, block and nut, left	RAL 9001 cream	
4210 072-901	Idem, right	RAL 9001 cream	



4211 045-000	Alu front profile connector Picca and Furore, left	Mill finish	
4211 047-000	Idem, right	Mill finish	
4211 045-008	Alu front profile connector Picca and Furore, left	RAL 7035 light grey	
4211 047-008	Idem, right	RAL 7035 light grey	
4211 045-901	Alu front profile connector Picca and Furore, left	RAL 9001 cream	
4211 047-901	Idem, right	RAL 9001 cream	

**Note.: After adjusting the adjusting bolt, please fix with Loctite.
(Part number 4210 175-000 see chapter Additional and fixing materials - 9B).**

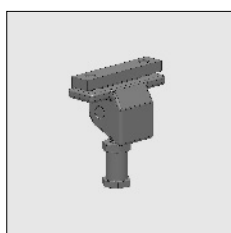
= Article will be sold out. Special orders remain possible.

Accessories for universal folding arms G-Plus and M-Plus

2



Part number	Description	Paint finish	Length in m ¹ Pack. unit
Primo, Linea, Gota and Oliva:			
4211 780-000	Alu front profile connector for Linea, Gota and Oliva, left	Mill finish	
4211 782-000	Idem, right	Mill finish	
4211 780-008	Alu front profile connector for Linea, Gota and Oliva, left	RAL 7035 light grey	
4211 782-008	Idem, right	RAL 7035 light grey	
4211 780-006	Alu front profile connector for Linea, Gota and Oliva, left	RAL 9010 pure white	
4211 782-006	Idem, right	RAL 9010 pure white	
4211 780-901	Alu front profile connector for Linea, Gota and Oliva, left	RAL 9001 cream	
4211 782-901	Idem, right	RAL 9001 cream	
4211 780-755	Alu front profile connector for Linea, Gota and Oliva, left (* = textured)	RAL 7016 anthracite grey*	
4211 782-755	Idem, right (* = textured)	RAL 7016 anthracite grey*	
4211 780-900	Alu front profile connector for Linea, Gota and Oliva, left (* = textured)	RAL 9005 jet black*	
4211 782-900	Idem, right (* = textured)	RAL 9005 jet black*	
4211 780-833	Alu front profile connector Linea, Gota en Oliva, left (* = textured)	Sepia brown*	
4211 782-833	Idem, right	Sepia brown*	
4211 780-916	Alu front profile connector Linea, Gota en Oliva, left	RAL 9016 traffic white	
4211 782-916	Idem, right	RAL 9016 traffic white	
Senza			
4212 272-000	Alu front profile connector for Senza, left	Mill finish	
4212 274-000	Idem, right	Mill finish	
4212 272-008	Alu front profile connector for Senza, left	RAL 7035 light grey	
4212 274-008	Idem, right	RAL 7035 light grey	
4212 272-006	Alu front profile connector for Senza, left	RAL 9010 pure white	
4212 274-006	Idem, right	RAL 9010 pure white	
4212 272-901	Alu front profile connector for Senza, left	RAL 9001 cream	
4212 274-901	Idem, right	RAL 9001 cream	
4212 260-716	# Alu front profile connector for Senza, left	RAL 7016 anthracite grey	
4212 262-716	# Idem, right	RAL 7016 anthracite grey	
4212 272-755	Alu front profile connector for Senza, left (* = textured)	RAL 7016 anthracite grey*	
4212 274-755	Idem, right (* = textured)	RAL 7016 anthracite grey*	



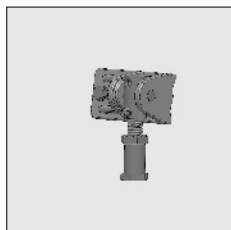
**Note.: After adjusting the adjusting bolt, please fix with Loctite.
(Part number 4210 175-000 see chapter Additional and fixing materials - 9B).**

= Article will be sold out. Special orders remain possible.

Accessories for universal folding arms G-Plus and M-Plus

Part number	Description	Paint finish	Length in m ¹ Pack. unit
-------------	-------------	--------------	--

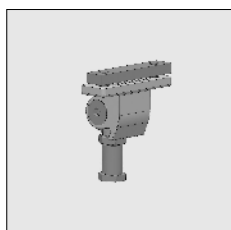
Bella and JdB:



4211 041-000	Alu front profile connector for Bella, left	Mill finish	
4211 043-000	Idem, right	Mill finish	
4211 041-008	Alu front profile connector for Bella, left	RAL 7035 light grey	
4211 043-008	Idem, right	RAL 7035 light grey	
4211 041-006	Alu front profile connector for Bella, left	RAL 9010 pure white	
4211 043-006	Idem, right	RAL 9010 pure white	
4211 041-901	Alu front profile connector for Bella, left	RAL 9001 cream	
4211 043-901	Idem, right	RAL 9001 cream	
4211 041-755	Alu front profile connector for Bella, left (* = textured)	RAL 7016 anthracite grey*	
4211 043-755	Idem, right	RAL 7016 anthracite grey*	
4211 041-900	Alu front profile connector for Bella, left (* = textured)	RAL 9005 jet black*	
4211 043-900	Idem, right	RAL 9005 jet black*	

Note.: After adjusting the adjusting bolt, please fix with Loctite.
(Part number 4210 175-000 see chapter Additional and fixing materials - 9B).

Aperta and Twins:



4210 881-000	Alu front profile connector for Aperta and Twins, left	Mill finish	
4210 883-000	Idem, right	Mill finish	
4210 881-008	Alu front profile connector for Aperta and Twins, left	RAL 7035 light grey	
4210 883-008	Idem, right	RAL 7035 light grey	
4210 881-006	Alu front profile connector for Aperta and Twins, left	RAL 9010 pure white	
4210 883-006	Idem, right	RAL 9010 pure white	

Note.: After adjusting the adjusting bolt, please fix with Loctite.
(Part number 4210 175-000 see chapter Additional and fixing materials - 9B).

